

Bicycle Friendly Community Public Meeting

May 30 and
June 4, 2019

Bikeways and Trails

- Connectivity to destinations – local and regional
- Quality of life for residents and visitors
- Safety
- Access to McDowell Sonoran Preserve
- Funding: 0.2% Transportation Sales Tax



*Scottsdale
Transportation*



Transportation Master Plan

- 2008 Bike Element Goals:
 - Provide a safe, connected, and convenient on-road bicycle network throughout the City of Scottsdale;
 - Expand the network of off-street shared-use paths and trails within the City of Scottsdale;
 - Achieve a Bicycle Friendly Community ranking of Gold from the League of American Bicyclists
- Transportation Master Plan Updated in 2016
 - More condensed document
 - Integrated the 2004 Trails Master Plan



ale
tation



Bikeways Projects

Bike Lanes

- New Construction
- Reconstruction
- On-Street Re-Striping
 - Routine pavement maintenance
 - Low cost



Paths and Trails

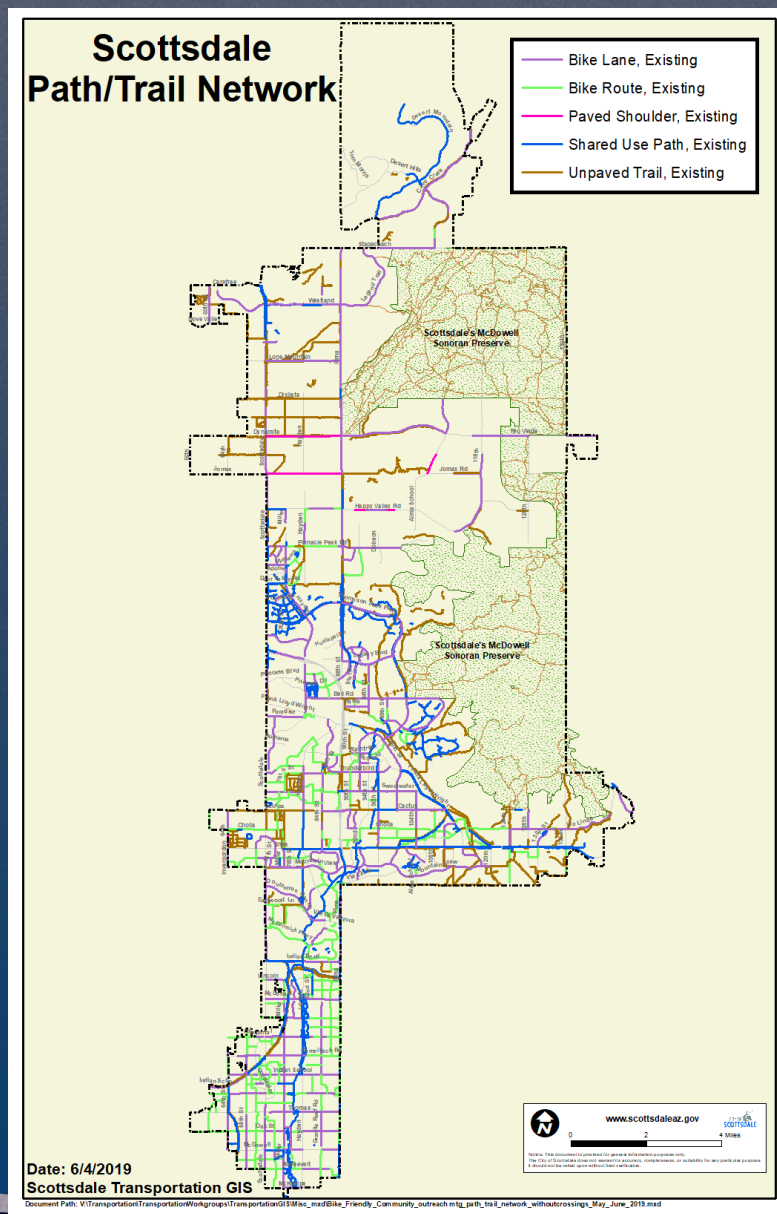
- Prioritization for Capital Improvement Plan
- Private development

Existing Bicycle Facilities

	Miles			
	1995	2007	2015	2019
Bike Lanes	8	86	134	174
Bike Routes	0	50	123	103
Paved Shoulders	0	10	*8	7
Paved Paths	37	61	89	129
Unpaved Trails Outside Preserve	35	238	143	133
McDowell Sonoran Preserve		47	172	214

* 4 miles were converted to bike lanes

Existing Bikeway Network

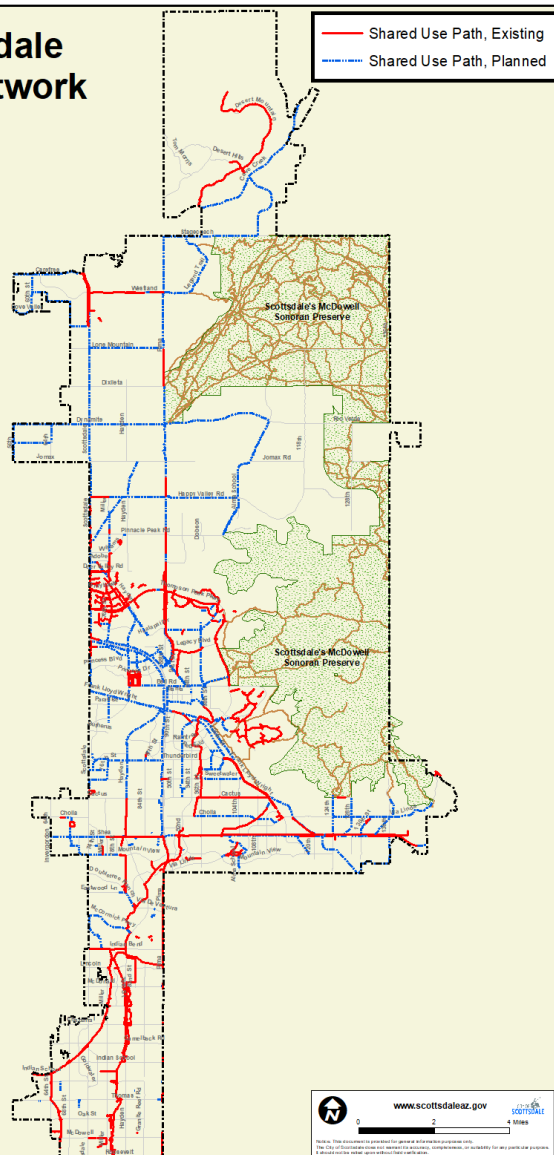


Regional and local connectivity



Existing & Planned Off-Street Network

Scottsdale Path Network

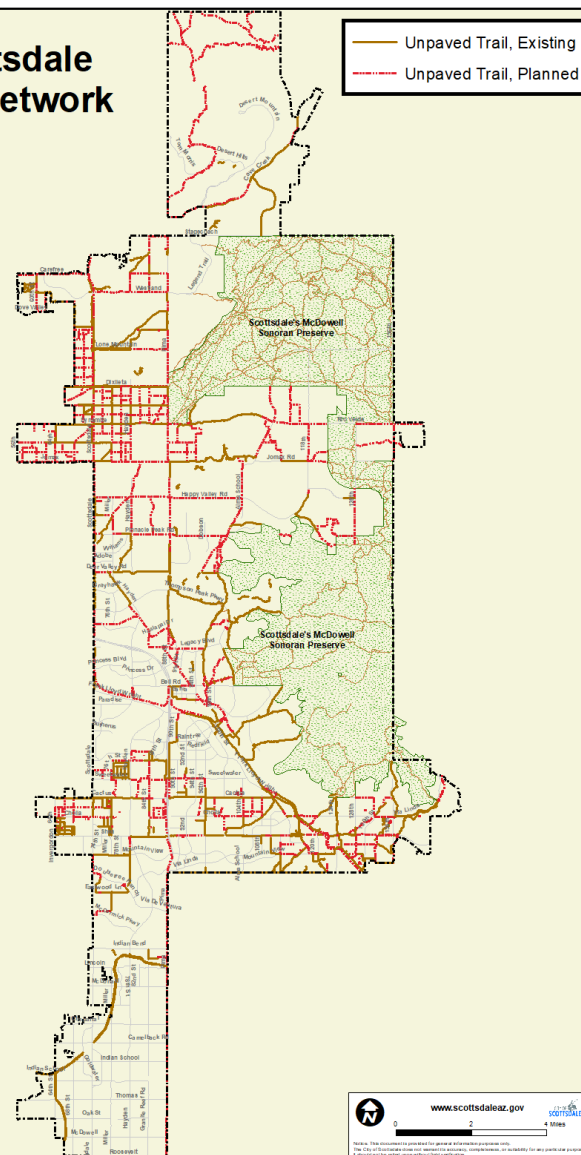


Date: 6/4/2019

Scottsdale Transportation GIS



Scottsdale Trail Network



Date: 6/4/2019

Scottsdale Transportation GIS



Regional and local connectivity



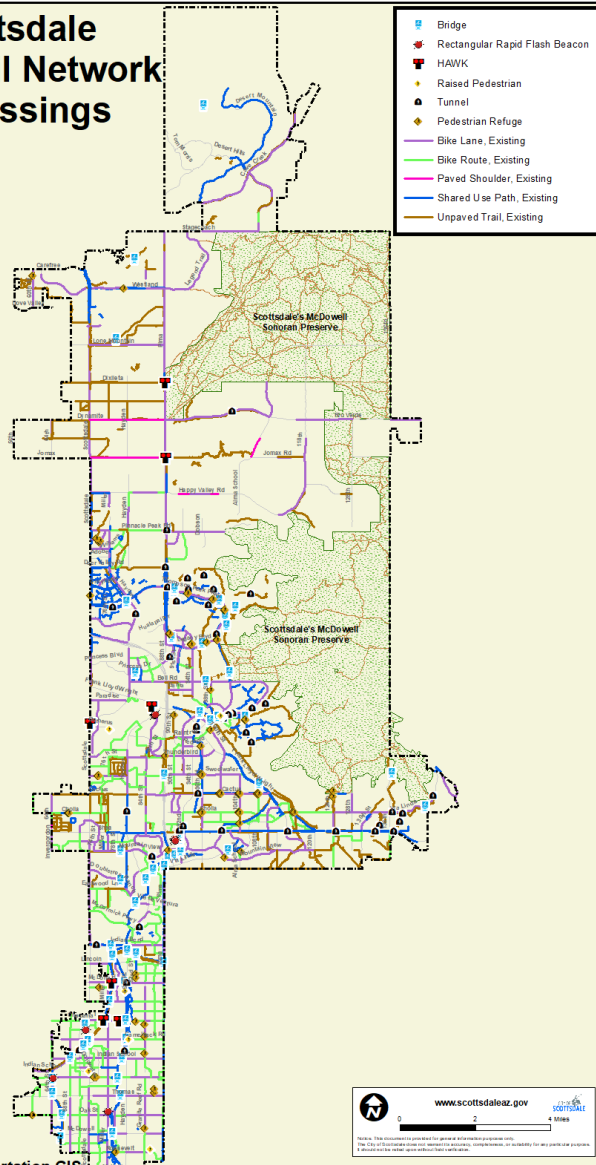
Off-Street Bicycle Network

Enhanced Crossings	192 total
Grade-Separated	
Underpasses	42
Tunnels	44 *
Bridges	22
At-Grade	
HAWK	7
Pedestrian Refuges	81
Raised Ped Crossings	7
Rectangular Rapid Flashing Beacons	7

* 2 tunnels are closed pending path construction

Off-Street Bicycle Network

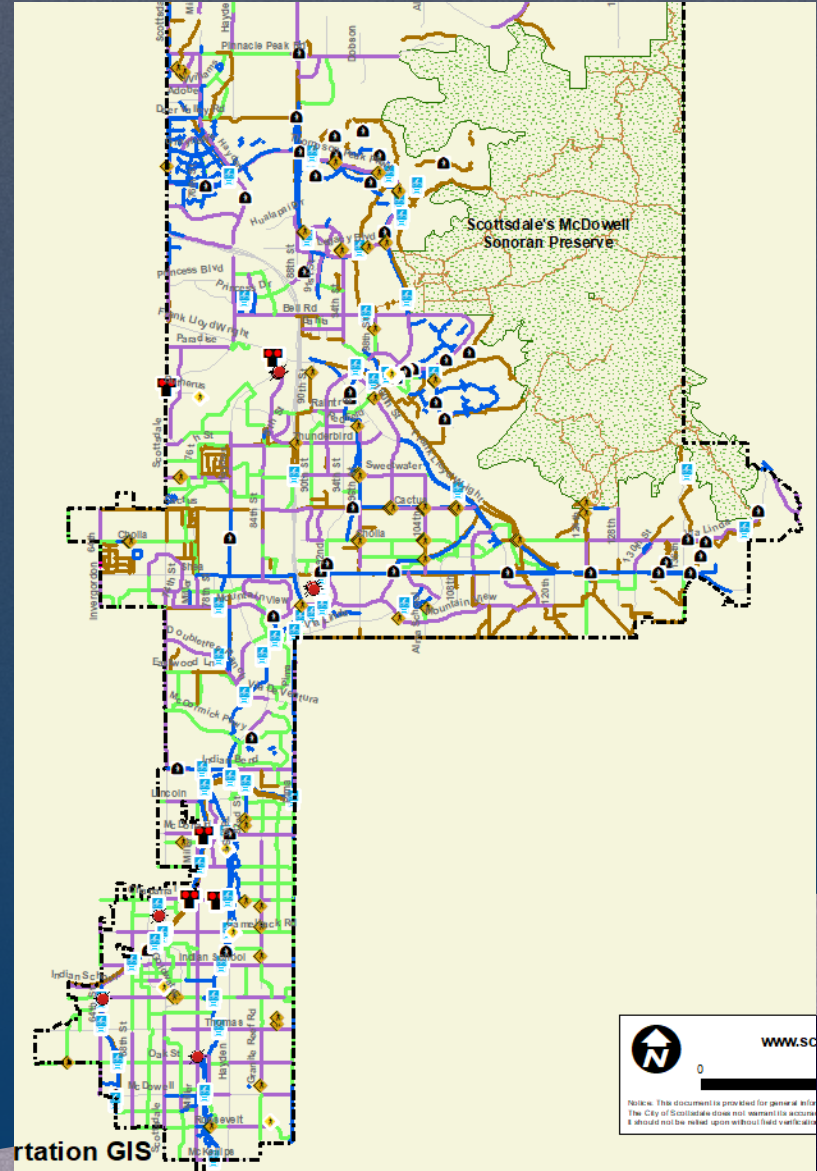
Scottsdale Path/Trail Network & Crossings



Date: 6/4/2019

Scottsdale Transportation GIS

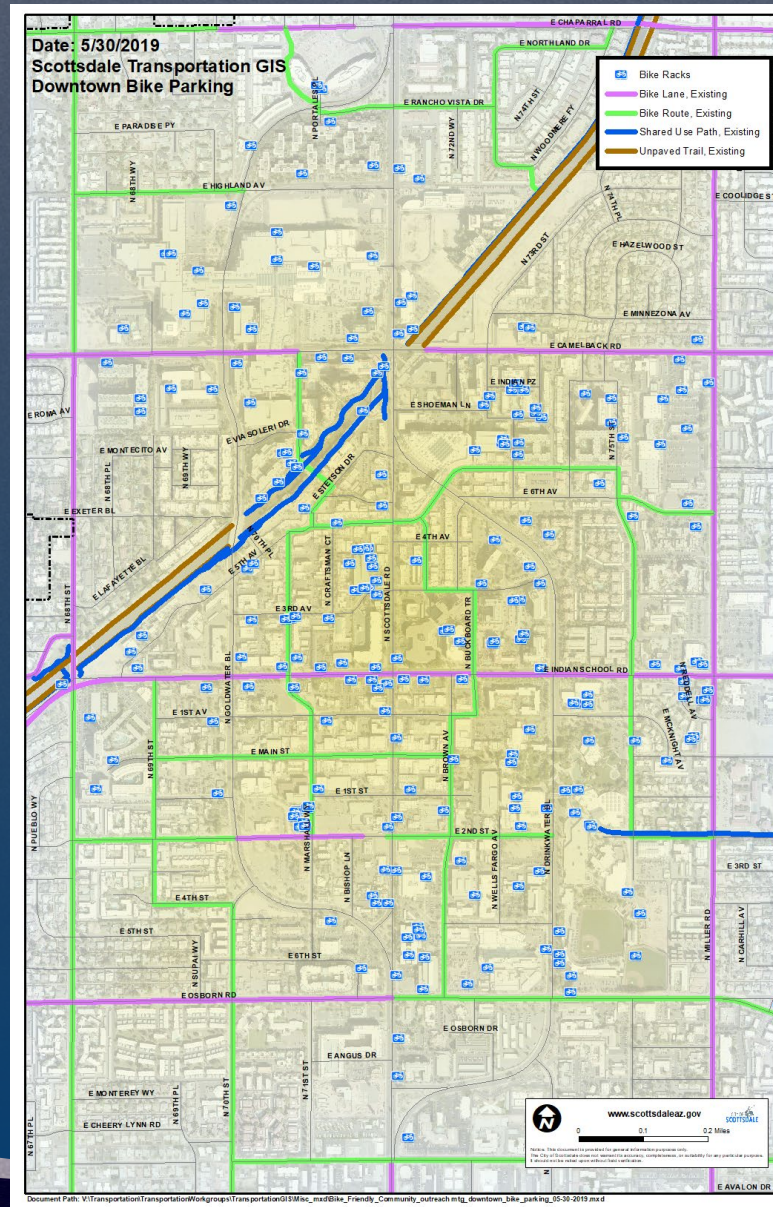
Document Path: V:\Transportation\TransportationWorkgroups\TransportationGIS\Bike_Friendly_Community_outreach mtg_path_trail_network_withcrossings_May_June_2019.mxd



Transportation GIS

TransportationWorkgroups\TransportationGIS\Bike_Friendly_Community_outreach mtg_path_trail_network_withcrossings_May_June_2019.mxd

Bike Racks in Old Town



Scottsdale
Transportation



Recently Completed Projects

- Crosscut Canal Bridge and Path
 - South of McDowell
 - Connects to Belleview bike route
- 2nd Street Path
 - Connects Indian Bend Wash Path to 75th Street and Civic Center Library
- 68th Street Bridge Over Arizona Canal
 - Full bridge replacement
 - Added sidewalks and bike lanes on both sides of the bridge
 - Improved connection of the canal path to the crosswalk
- Adero Canyon Path
 - Sole connection for bicyclists and pedestrians between Scottsdale and Fountain Hills

Recently Completed Projects

- Detection for Bicyclists at Traffic Signals
 - Approximately 30 locations completed
- Wayfinding Signage for Paths and Trails
 - Design is complete for McKellips Road to Indian Bend Road
- Bicycle Station Study
 - Concept is completed
 - Fully funded with a grant from Maricopa Association of Governments

Upcoming Projects

- Hayden and Thomas Intersection
- Shea Underpass and Trail near 124th Street
- Arizona Canal path North of Camelback
- McDowell Road Bike Lanes
- Osborn Road Complete Street: Hayden to Scottsdale Road
- Hayden and Chaparral Underpass east of Hayden
- 68th Street Complete Street from Thomas to Indian School
- Thomas Road Bike Lanes from 73rd Street to 56th Street

Upcoming Projects

- Arterial Life Cycle Program (ALCP)
 - 70% funding from Maricopa Association of Governments (MAG) from Proposition 400 – half cent sales tax, expires in Fiscal Year 2026
 - 30% Scottsdale contribution using 0.1% temporary (10 year) transportation sales tax increase, voter-approved in November 2018

Table 2	Mileage			
Corridor	Path	Trail	Bike Lane	Sidewalk
Pima Rd - Pinnacle Peak to Happy Valley	1.0	1.0	1.0	0.0
Happy Valley - Pima to Alma School	0.0	2.0	2.0	2.0
Raintree Drive - Scottsdale to Loop 101	0.0	0.0	1.9	0.0
Redfield Road - 76th to Hayden	0.0	0.0	0.4	0.0
Pima Rd - Krail to Chaparral	0.0	0.0	1.8	1.8
Total In Design	1.0	3.0	7.1	3.8

Table 3	Mileage			
Corridor	Path	Trail	Bike Lane	Sidewalk
Pima Rd - Happy Valley to Stagecoach	7.0	7.0	7.0	0.0
Scottsdale Rd - Thompson Peak to Carefree	8.4	7.3	9.0	0.0
Carefree Hwy - 56th to Scottsdale	0.0	2.0	2.0	2.0
Shea Blvd - Loop 101 to 144th	0.3	0.0	0.0	0.0
Hualapai & Mayo Connections	0.0	0.0	1.2	2.4
Pima Rd - Chaparral to Thomas	0.0	0.0	2.0	1.5
Total Future	15.7	16.3	21.2	5.9

*Scottsdale
Transportation*



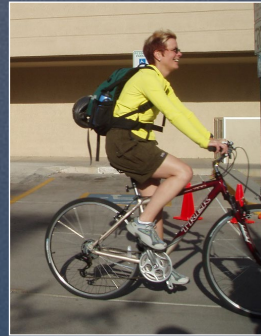
Outreach, Education and Events

- Promote Bikeways and Trails to all ages
- Presentations
 - K-12 Classrooms and college students
 - Scout troops
- Bike Rodeos to learn cycling skills
- Community bike rides – Cycle the Arts, ride rules
- Walk and Bike to School Day



Bike Month

- April is Valley Bike Month
 - Began as single Bike to Work Day in 1980s
 - Grew to a full month in 2005
- Valley Metro partnership with cities
 - Event promotion on www.ShareTheRide.com
 - Printed materials
 - Bike Month Challenge with prizes
 - “Sweet Deals” for bicyclists at valley businesses
 - Free t-shirts designed by artists
- City events
 - Scottsdale Cycle the Arts
 - Bike to Work Day



Cycle the Arts

- Began in 2005 – Annual Bike Month activity.
- Partner with Scottsdale Public Art staff, board members, artists, as well as Valley Metro
- Promote Public Art and Bikeways to all ages:
 - Education on bike skills – pre-ride safety talk
 - Percent for Art Program and extensive art collection
 - Capital Improvement Program
 - Highlight new projects
 - Encourage bike riding for all experience levels
 - Small groups with ride leaders and sweepers



*Scottsdale
Transportation*



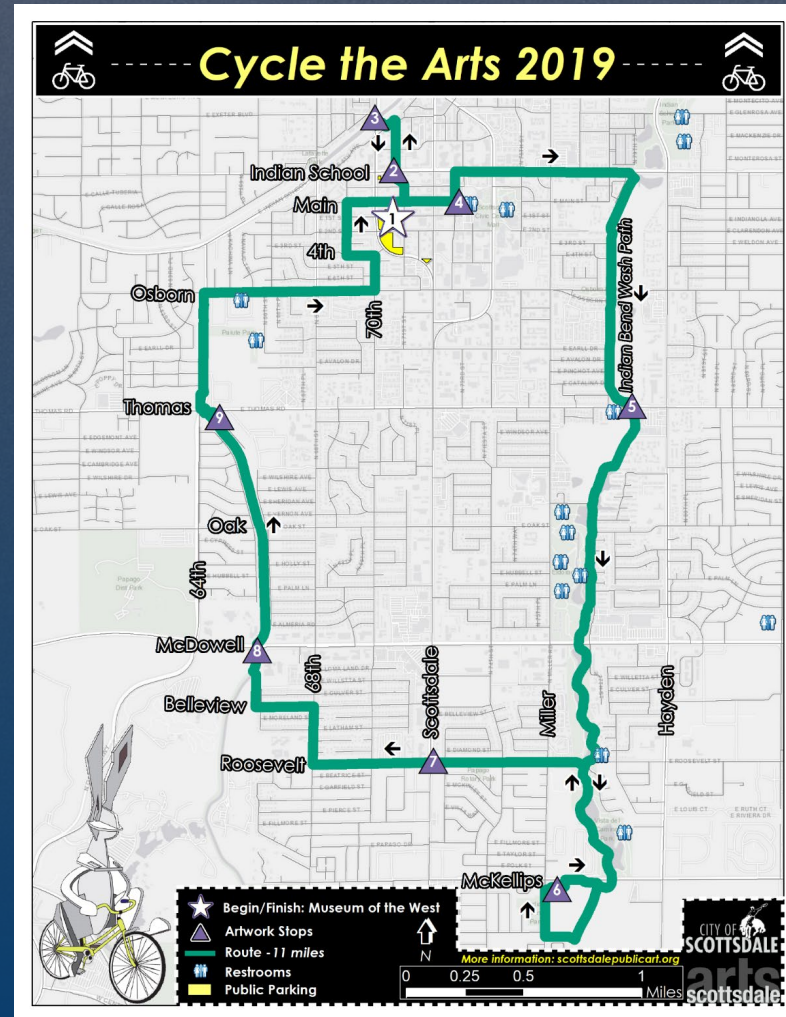
Cycle the Arts 2019

- Cycle the Arts Downtown Family ride
 - Sunday April 14th
 - Museum of the West
 - Mayor Lane kicked off the event
 - 13 miles long, 9 art stops
 - 50 attendees
 - Received 2 t-shirts and breakfast snacks
 - Artist Lucretia Torva signed shirts and posters



Cycle the Arts 2019

- Route and stops
 - Diamond Bloom
 - Tributary Wall
 - One-Eyed Jack
 - The Yearlings
 - Swale
 - Garden of Evidence
 - Historical Happenstance and IN FLUX
 - Swimming Dream
 - Jack Early Mural at Rage Cycles



Bike to Work Day

- Wednesday April 17th
 - Stops at Vista del Camino Park, ReGroup Coffee, One Civic, Mountain View Park
 - Drinks, breakfast snacks, and t-shirts
 - Sponsors: General Dynamics, Phil and Shar Roos, ReGroup Coffee, & Scottsdale Transportation Department
 - Approximately 109 riders
 - Councilwoman Whitehead biked to work via Mountain View Park



Scottsdale
Transportation



Pueblo Elementary Bike to School Day



- Wednesday May 8, 2019
- Transportation and Police Bike Unit
- 50 students and several parents
- Helmet fittings and safety talk
- Ruffled helmet, bike tune up, and bags
- Snacks and drinks by Renegade Coffee



*Scottsdale
Transportation*



Safe Routes to School Coordinator

- Grant funded part-time Coordinator for events at 15 SUSD K-8 schools
 - Walk & Bike to School Day
 - Classroom activities
- Modest incentives
 - Helmets, stickers, bracelets
- Also coordinate with staff:
 - Engineering and Enforcement



League of American Bicyclists (LAB)

- The Bicycle Friendly Community (BFC) program recognizes municipalities that actively support cycling and encourage residents to use bicycles for transportation and recreation.
- Evaluation of cities gives measurable goals for improvements
- The 5 E's
 - Engineering
 - Education
 - Encouragement/ events
 - Enforcement
 - Evaluation and Planning
 - 6th E: Equity

LAB provides resources to communities

League of American Bicyclists (LAB)

- An award of Diamond, Platinum, Gold, Silver or Bronze status is designated for four years.
- Scottsdale awarded Silver level in 2005.
 - First community without a university or college to reach Silver level.
 - Achieved Silver again in 2007.
- Awarded Gold level in 2011 and 2015
 - Public input for applications.
 - Local reviewers help LAB evaluate applications.
 - Received feedback from LAB.

Bicycle Friendly Communities

- 2011
 - 190 communities in 46 states
 - 3 Platinum
 - 14 Gold
- Fall 2015
 - 372 communities in 50 states
 - 5 Platinum
 - Boulder, Fort Collins, Davis, Portland, and Madison.
 - 24 Gold
- Spring 2019
 - 462 communities in 50 states
 - 5 Platinum
 - 34 Gold

Engineering Key Steps to Platinum

- Continue to expand and improve the bike network through the use of different types of bicycle facilities.
- Install a bicycle wayfinding system with distance and destination information.
- Continue to increase the amount of high quality bicycle parking throughout the community.
- Launch a bike share system that is open to the public.



*Scottsdale
transportation*



Education Key Steps to Platinum

- Work with your local bicycle groups or interested parents to expand the Safe Routes to School program to all schools.
- Continue efforts to expand adult bicycle education opportunities such as commuter classes.



*Scottsdale
Transportation*



Encouragement Key Steps to Platinum

- Increase your efforts on Bike to Work Day and Bike to School Day.
- Offer a 'Cyclovia' or Open Streets type event, closing off a major corridor to auto traffic and offering the space to cyclists and pedestrians.



Enforcement Key Steps to Platinum

- Continue to ensure that police officers are educated on traffic laws as they apply to bicyclists and motorists as well as bicycling skills.
- Consider an update to your restriction on motorized bikes on paths to account for newer models of electrically-assisted bicycles.



Evaluation & Planning

Key Steps to Platinum

- Continue efforts to update your 2008 bicycle plan to ensure that state-of-the-art bicycle facilities are included, and that infrastructure planning is complemented with encouragement, education, and enforcement programs.
- Adopt a target level of bicycle use (percent of trips) to be achieved within a specific timeframe, and ensure data collection necessary to monitor progress.
- Ensure that your bicycle counts also capture the gender of cyclists to identify any gender gaps.



Scottsdale
Transportation



Next Steps

- Public Outreach – Meetings, online, individual meetings
- Staff are 75% finished drafting the application
- Current application form has improved in format and asks for more detail:
 - Bicycle Parking
 - Lighting
 - Bike Share
 - Education – Students and Adults
 - Bicycle-Related Laws
 - Funding and Implementation
 - Expanded Evaluation Methods
 - Bonus Points for Each of the 5 E's
- Scottsdale will apply for the next BFC August 8, 2019.

*Scottsdale
Transportation*



Discussion

