

Pinnacle Peak Park Main Trail Map

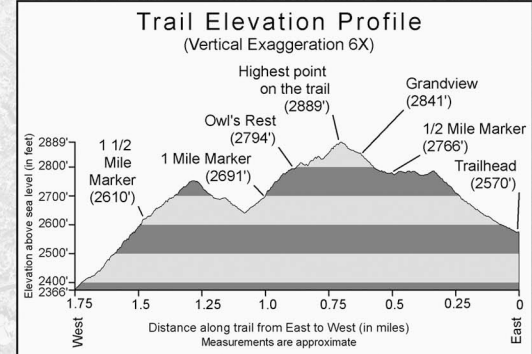
Trail Notes:

- ◇ Distance: 1.75 Miles each way.
- ◇ Trail is not a loop trail.
- ◇ No facilities along trail.

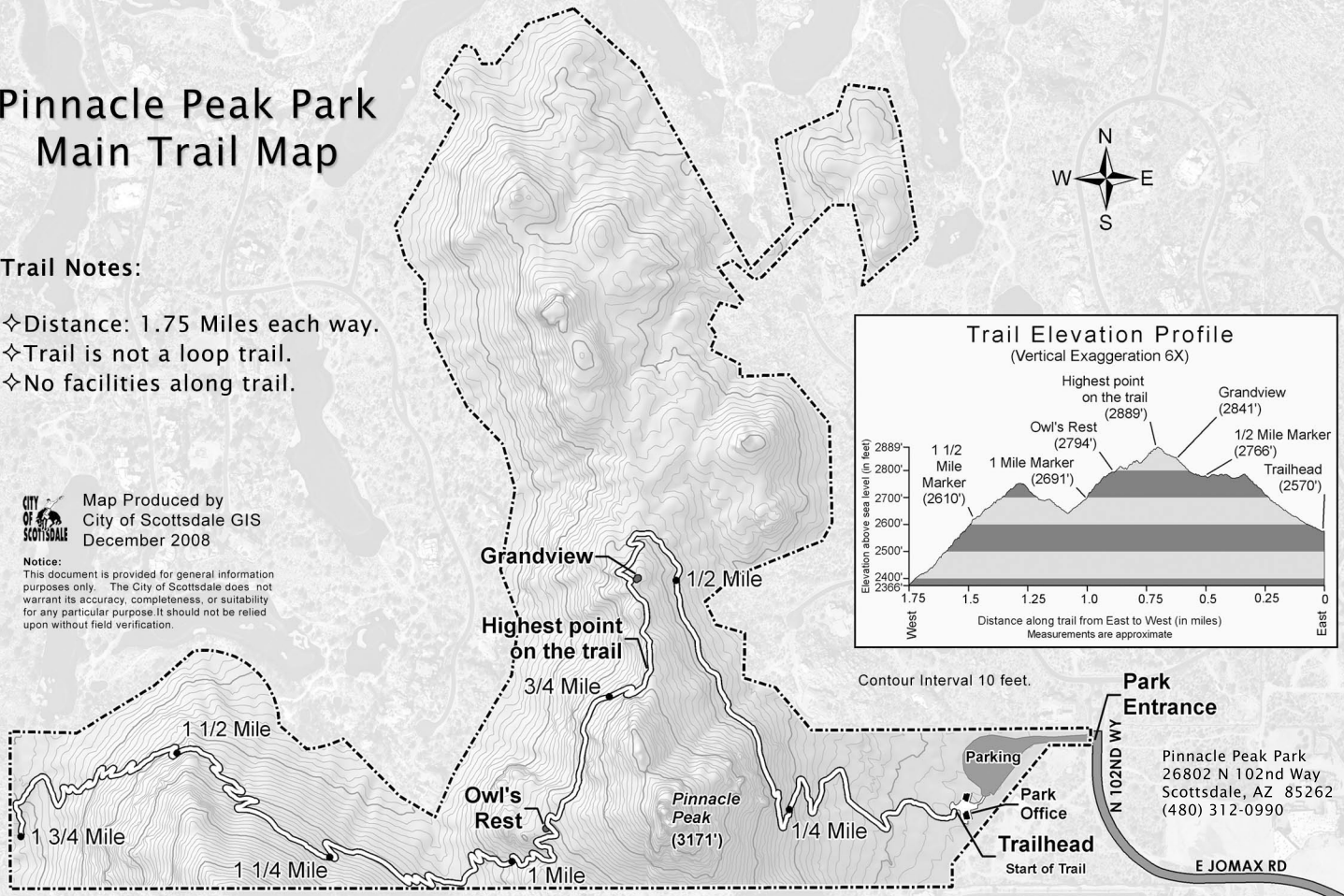


Map Produced by
City of Scottsdale GIS
December 2008

Notice: This document is provided for general information purposes only. The City of Scottsdale does not warrant its accuracy, completeness, or suitability for any particular purpose. It should not be relied upon without field verification.



Contour Interval 10 feet.



Park Entrance

Pinnacle Peak Park
26802 N 102nd Way
Scottsdale, AZ 85262
(480) 312-0990

N 102ND WY

E JOMAX RD

Parking

Park Office

Trailhead

Start of Trail

Pinnacle Peak
(3171')

Owl's Rest

Highest point on the trail

Grandview

1 3/4 Mile

1 1/2 Mile

1 1/4 Mile

3/4 Mile

1/2 Mile

1/4 Mile

1 Mile