



About Scottsdale

The voters elect a mayor and six councilmembers to govern Scottsdale. The City Council appoints six officers to advise them on policy issues and run daily operations. 2,711 city employees and 5,509 volunteers serve the 238,000 citizens of Scottsdale.

What was accomplished?

These are a few selected accomplishments from the past year, grouped by strategic goal:

VALUE SCOTTSDALE'S UNIQUE LIFESTYLE AND CHARACTER

- New **Scottsdazzle** holiday and Western Week events focus attention on Downtown Scottsdale
- New monthly downtown e-newsletter provides info on city efforts to 1,500+ subscribers

SEEK SUSTAINABILITY

- Improved **green waste recycling** from single-family homes by 7 percent
- Improved safety and reduced risk in four city buildings by installing new fire alarms

PRESERVE MEANINGFUL OPEN SPACE

- Acquired 400+ acres of state land for Scottsdale's McDowell Sonoran Preserve
- Opened 7½ miles of **new preserve trails** north of Dynamite Boulevard

ADVANCE TRANSPORTATION

- Adjusted **traffic signals** to reduce commutes by 15+ percent on 4 major roads
- Began designing project to add bike lanes along McDowell Road corridor

ENHANCE NEIGHBORHOODS

- **Back to school program** provided 992 children with clothing and backpacks filled with supplies
- More than 4,000 participate in Library's fourth Ultimate Play Date for families
- Police and Fire departments hosted successful 5-day interactive teen academy

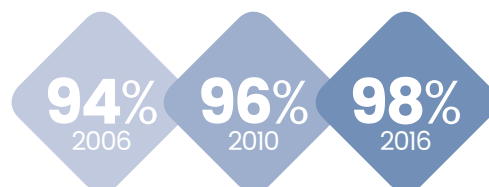
SUPPORT ECONOMIC VITALITY

- Attracted, retained or expanded **14 businesses with 1,019 jobs** with average wages of \$62,744

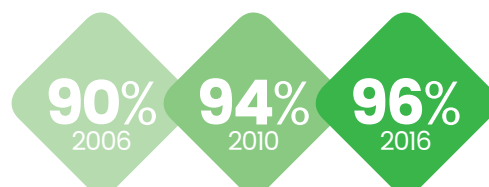
How our residents rate Scottsdale

Percent "excellent" or "good"

As a place to live



Quality of life



For complete results go to ScottsdaleAZ.gov and search "survey."

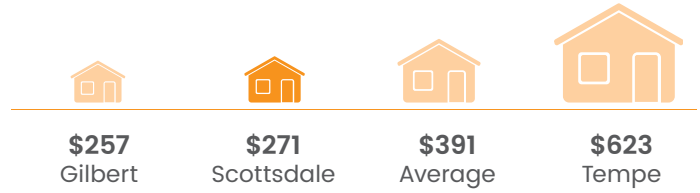
How do we compare with our neighbors?

Scottsdale is part of the Phoenix metropolitan area, and taxes and rates vary across the eight largest cities. Scottsdale's rates are lower than all but two or three of the largest cities. Scottsdale's rates are also at or below last year's levels.

CITY PROPERTY TAX ON A \$250,000 HOUSE

This is the amount of city-only property tax on a home assessed at \$250,000 in area communities. About 10 percent of the total tax bill goes to the city. The rest goes for public schools, the county, and other special districts.

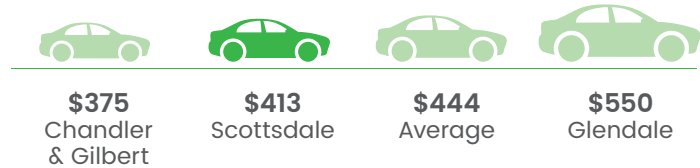
Source: City budget offices



CITY SALES TAX ON A \$25,000 CAR

This is the city sales tax that would be due on a new car valued at \$25,000 in area communities. In Scottsdale, the city portion is 1.65% of the total 7.95% charged. The rest goes to the state and the county.

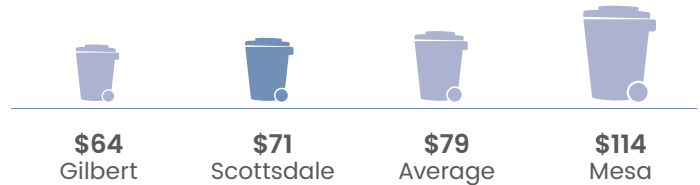
Source: Arizona Department of Revenue



MONTHLY RESIDENTIAL UTILITY BILL

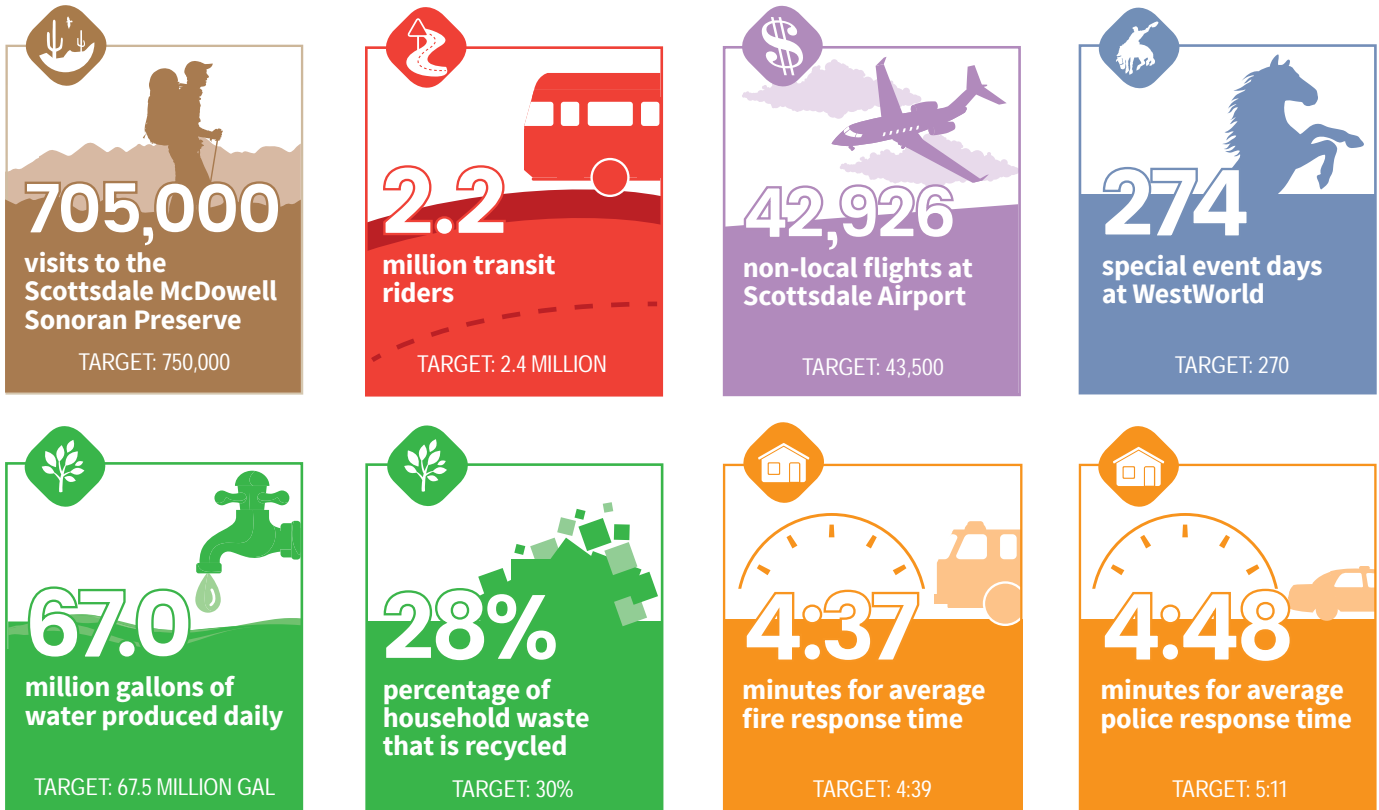
This includes water, wastewater (sewer) and solid waste (trash and recycling) for a single-family residential customer in each community. Actual bills may vary based on actual usage and size of property.

Source: City of Tempe



How are we doing?

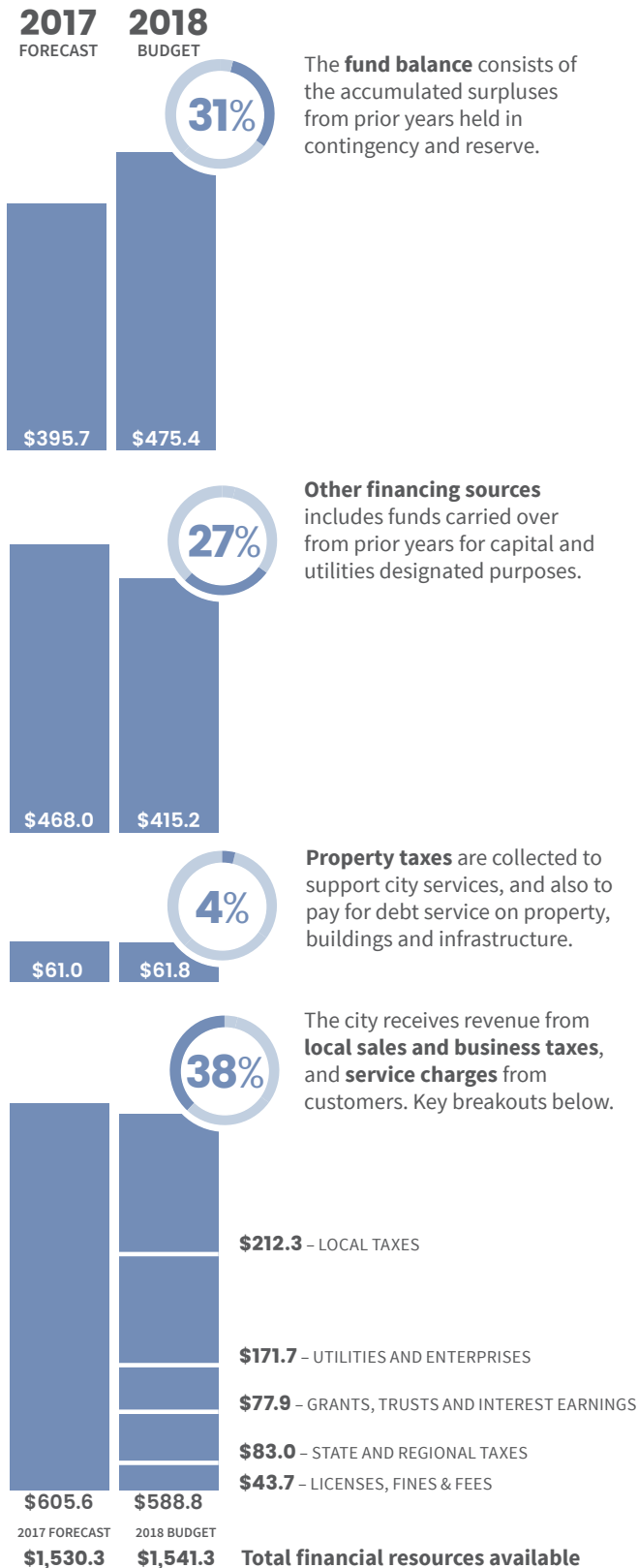
This is a snapshot of measures from the city's Quarterly Performance Report. For more measures, go to ScottsdaleAZ.gov, search "performance."



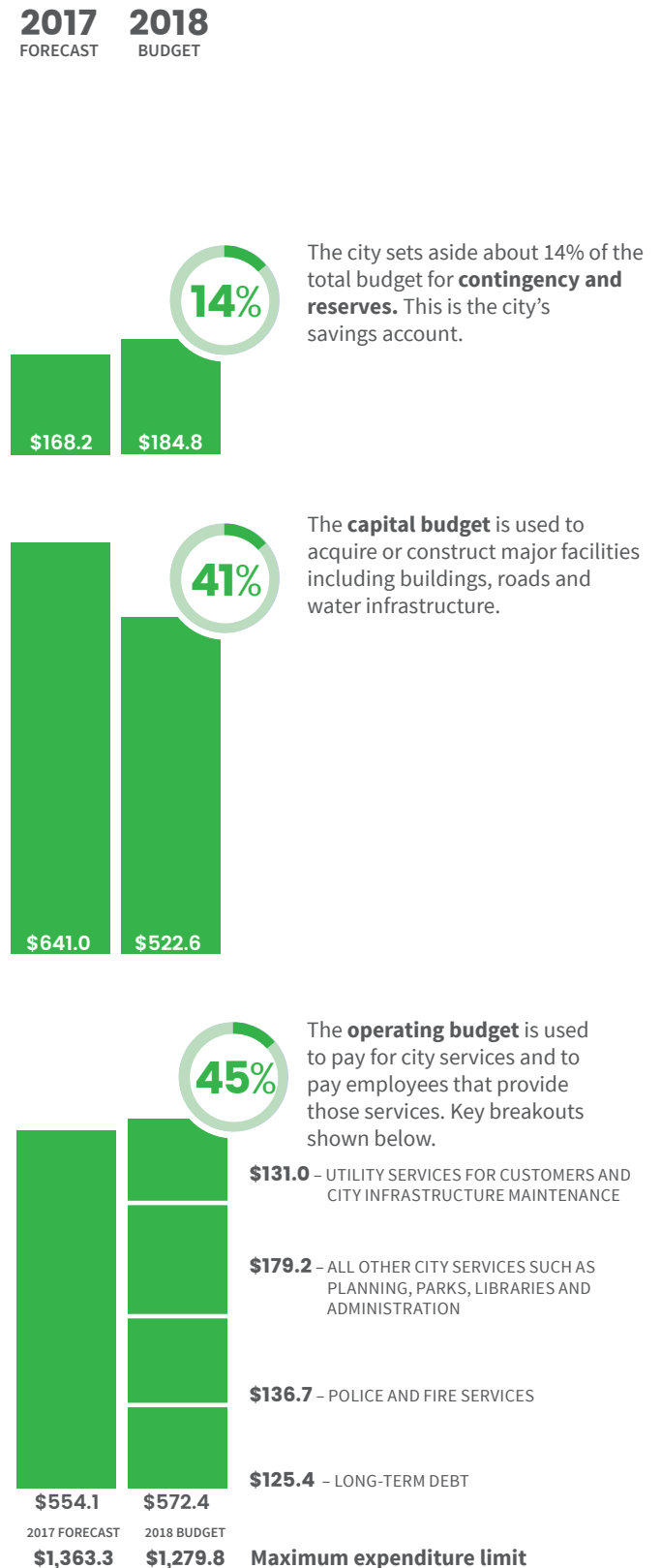
What does it cost to run the city and how are those costs paid?

Scottsdale is required by law to adopt a budget each year, and cannot spend more than that total amount. This includes all city funds for the fiscal year ending June 30. These numbers are as adopted by the City Council on June 2017. The city's financial statements are audited annually by an independent auditor. The most recent audit for 2016 received a clean opinion.

What financial resources are available for the City of Scottsdale? (in millions of dollars)



What are the expenses for running the City of Scottsdale? (in millions of dollars)



What are our priorities for Fiscal Year 2017/18?

The city's mission statement is Simply Better Service for a World-Class Community. The city has six long-term strategic goals and six short-term priorities. Selected objectives that advance these efforts are listed below.



PRESERVE MEANINGFUL OPEN SPACE

- Initiate site design and public input process for new trailhead at Pima and Dynamite
- Acquire remaining private parcel within the Preserve recommended study boundary area



SUPPORT ECONOMIC VITALITY

- Develop and carry out strategies that support new investment in key employment centers
- Implement Downtown Marketing plan to attract regional visitors and support local business



ENHANCE NEIGHBORHOODS

- Create new grant-funded Family Resource Center to provide library and human services
- Build 3 new fire stations and refurbish another with bond financing approved by voters in 2015



ADVANCE TRANSPORTATION

- Begin planning and acquisition for Cactus Trolley, Airpark Trolley and Scottsdale Limited Bus service
- Invest additional \$20 million to replace aging pavement to restore streets to pre-recession standard using bond financing approved by voters in 2015



SEEK SUSTAINABILITY

- Increase residential recycling diversion rate to 30% or more over next two years
- Improve citizen access to services and data through new online app and open data portal



VALUE SCOTTSDALE'S UNIQUE LIFESTYLE AND CHARACTER

- Improve pedestrian and disabled access along sidewalks and improve lighting Downtown
- Expand Canal Convergence event to two weekends and move event to Fall 2018

PHOTOS: BOB BENNETT,
SEAN DECKERT, MAUREEN ISREE,
W. SCOTT MITCHELL



This report provides a snapshot of information available in the budget and comprehensive annual financial report documents which are available at ScottsdaleAZ.gov and search "finance."

This report is prepared according to AGA citizen centric reporting standards.

Please contact the City Manager's Office if you have comments or suggestions on how we can improve this report.

Scottsdale's City Manager's Office
3939 N. Drinkwater Blvd.
Scottsdale, AZ 85251
480-312-2800
citymanager@ScottsdaleAZ.gov