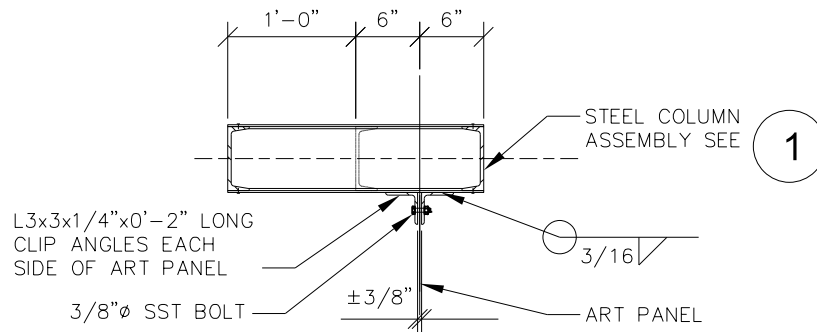


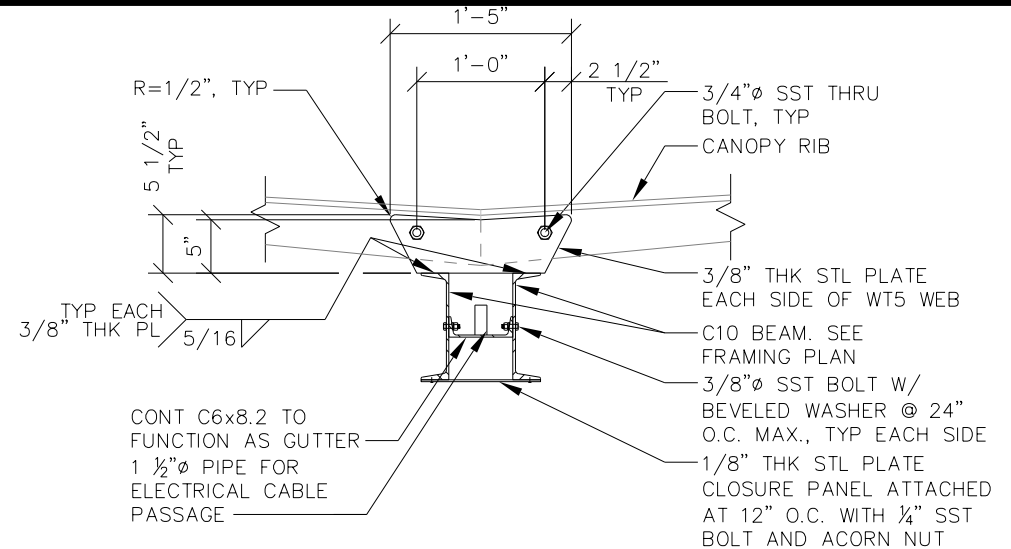
NOTES:

1. LIGHT FIXTURE NOT SHOWN FOR CLARITY. PROVIDE MAG LED MR16, 12 DEGREE, COOL WHITE, YOKE MOUNT, 12V LIGHT FIXTURE BY MAGNIFLOOD OR APPROVED EQUAL.
2. DRILL AND TAP 2 1/2"Ø STD PIPE TO RECEIVE (3) 1/4"Ø SET SCREWS FOR ATTACHMENT OF LIGHT FIXTURE TO PIPE. COORDINATE ATTACHMENT DETAILS W/ SELECTED LIGHT FIXTURE MFR

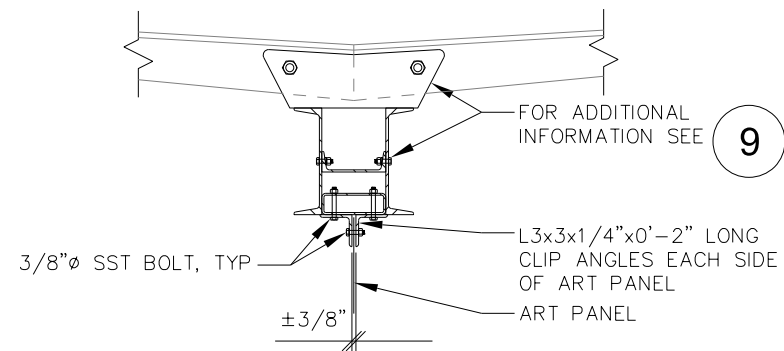
8 LIGHT FIXTURE ARM DETAIL



10 ART PANEL AT COLUMN DETAIL
N.T.S.



9 CANOPY RIB AT C10 BEAMS
N.T.S.



11 ART PANEL AT C10 BEAMS