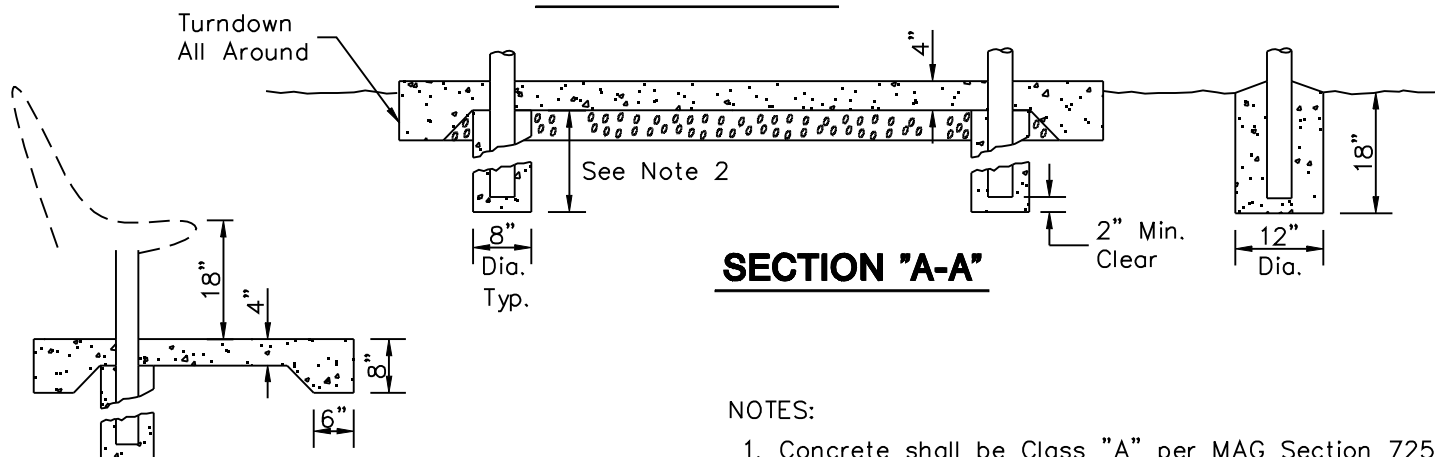


BASE SLAB PLAN

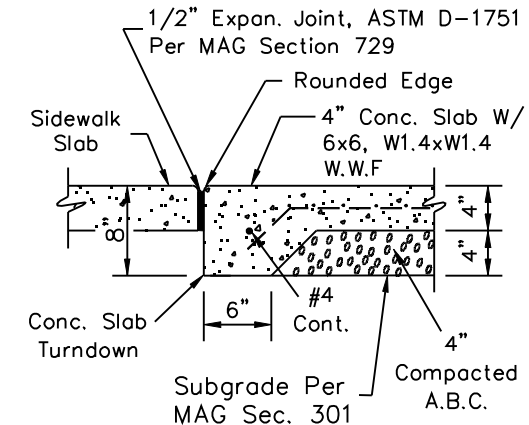


SECTION "A-A"

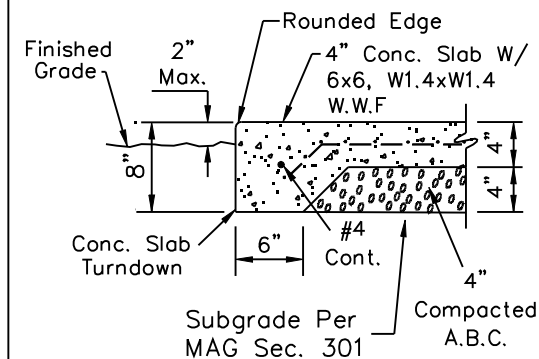
SECTION "B-B"

NOTES:

1. Concrete shall be Class "A" per MAG Section 725. Slab surface shall be trowel finish with salt pitted appearance and random sweat. Use integral color when specified on the plans.



SLAB EDGE AT SIDEWALK



SLAB EDGE AT GRADE

2. Dimensions may vary with bench style – Verify and adjust to provide clearance and bench height shown.

DETAIL NO. 2268	City of Scottsdale Standard Details	APPROVED BY: Scottsdale Standards & Specifications Committee	BASE SLAB AND FOUNDATIONS FOR BUS STOP BENCH AND RECEPTACLES	DETAIL NO. 2268
---------------------------	--	--	---	---------------------------