



Visit: [www.scottsdaleairport.com](http://www.scottsdaleairport.com)

# SCOTTSDALE AIRPORT RUNWAY 15990 N. 82ND WAY

SCOTTSDALE, AZ 85260 | SCOTTSDALE AIRPORT

**62' X 47' INDIVIDUAL HANGARS FOR LEASE**

Commercial Properties Incorporated is offering this property under a Co-Brokerage agreement with:

**DMD** | REAL ESTATE  
GROUP  
BROKERAGE, INVESTMENT, INVESTORS

**Douglas M. Davies**  
M: 602.550.8989  
[douglas@thedmdgroup.com](mailto:douglas@thedmdgroup.com)



**COMMERCIAL PROPERTIES INC.**

Locally Owned. Globally Connected. CORFAC INTERNATIONAL

TEMPE: 2323 W. University Drive, Tempe, AZ 85281 | 480.966.2301  
SCOTTSDALE: 8777 N. Gainey Center Dr., Suite 245, Scottsdale, AZ 85258 | [www.cpi.az.com](http://www.cpi.az.com)

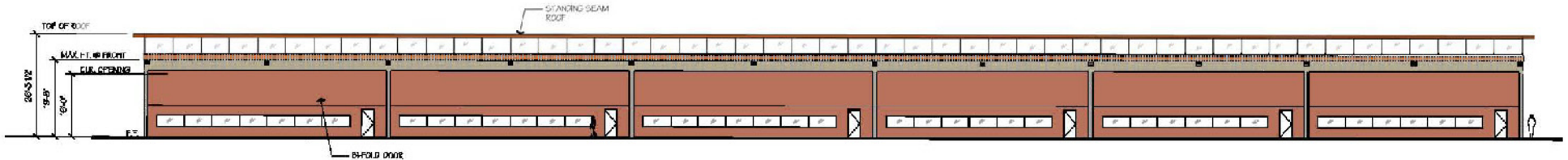
**Shane McCormick**  
D: 480.968.9618  
M: 480.720.6250  
[smccormick@cpi.az.com](mailto:smccormick@cpi.az.com)

The information contained herein has been obtained from various sources. We have no reason to doubt its accuracy; however, J & J Commercial Properties, Inc. has not verified such information and makes no guarantee, warranty or representation about such information. The prospective buyer or lessee should independently verify all dimensions, specifications, floor plans, and all information prior to the lease or purchase of the property. All offerings are subject to price change, prior sale, lease, or withdrawal from the market without prior notice. Effective: 11/04/22

# SCOTTSDALE AIRPORT RUNWAY | 15990 N. 82ND WAY

SCOTTSDALE, AZ 85260 | SCOTTSDALE AIRPORT

## 62' X 47' INDIVIDUAL HANGARS FOR LEASE



### Available

#### Unit A-102

±2,914 SF

- An ADA Restroom
- 200 Amps of Power
- Storage Room
- Mezzanine Office in Hangar

#### Unit A-103

±2,914 SF

- An ADA Restroom
- 200 Amps of Power
- Storage Room
- Mezzanine Office in Hangar

#### Unit A-107

±2,914 SF

- An ADA Restroom
- 200 Amps of Power
- Storage Room

### Project Amenities

- Direct Runway Access
- Fuel Discount
- 3-5 Year Leases

### All Units to Include

- 16' Clear Electric Bi-Fold Doors
- Roof Insulation
- LED Lighting
- Fire Sprinkler Systems
- Hose Bibs for Water
- Drains / Oil Separator



Commercial Properties Incorporated is offering this property under a Co-Brokerage agreement with:

**DMD**  
BROKERAGE, INVESTMENT, INVESTORS

REAL ESTATE  
GROUP

**Douglas M. Davies**

M: 602.550.8989

douglas@thedmdgroup.com



**COMMERCIAL PROPERTIES INC.**

Locally Owned. Globally Connected. CORFAC

TEMPE: 2323 W. University Drive, Tempe, AZ 85281 | 480.966.2301  
SCOTTSDALE: 8777 N. Gainey Center Dr., Suite 245, Scottsdale, AZ 85258 | www.cpi.az.com

**Shane McCormick**

D: 480.968.9618

M: 480.720.6250

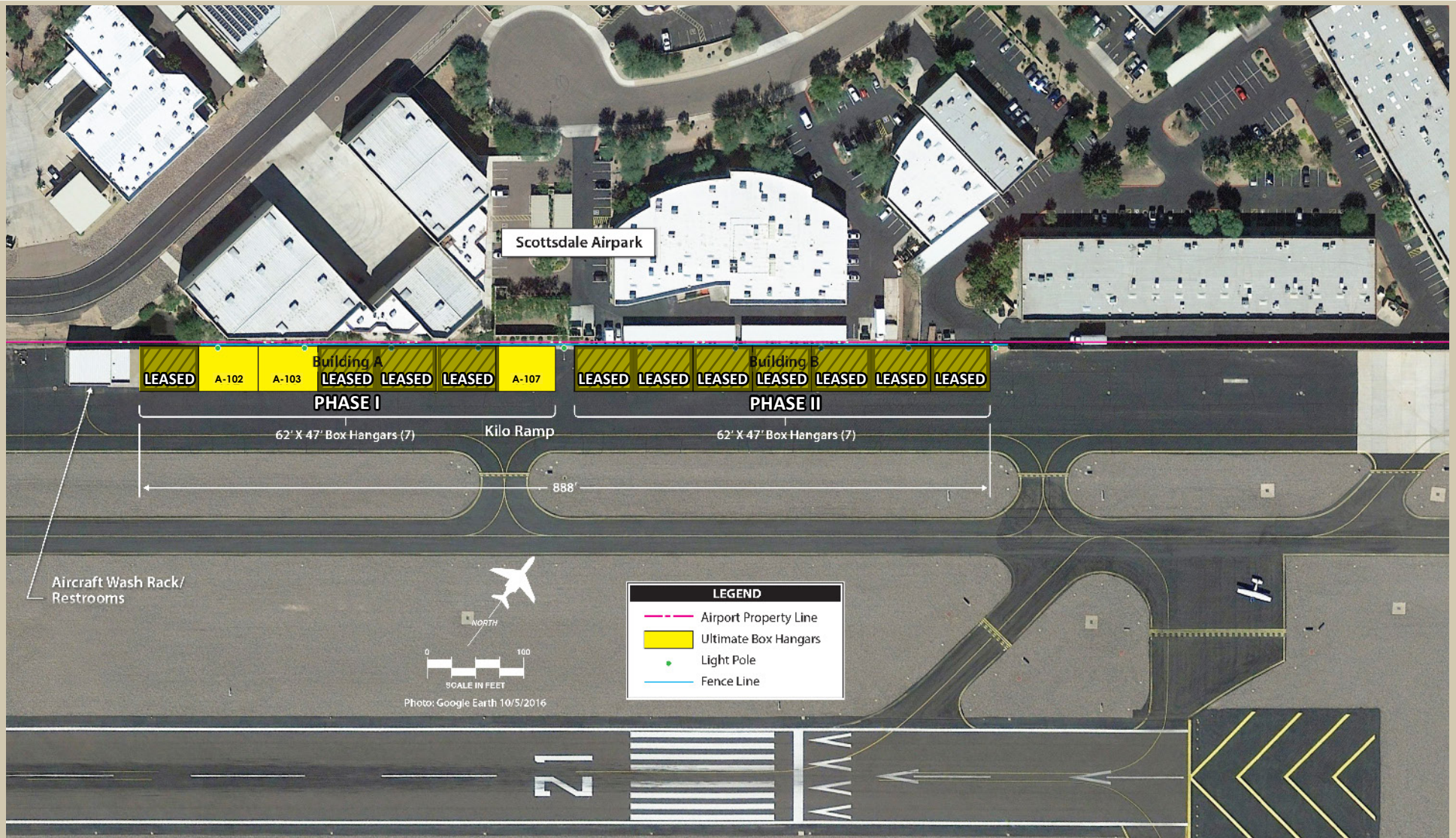
smccormick@cpi.az.com

The information contained herein has been obtained from various sources. We have no reason to doubt its accuracy; however, J & J Commercial Properties, Inc. has not verified such information and makes no guarantee, warranty or representation about such information. The prospective buyer or lessee should independently verify all dimensions, specifications, floor plans, and all information prior to the lease or purchase of the property. All offerings are subject to price change, prior sale, lease, or withdrawal from the market without prior notice. Effective: 11/04/22



# SCOTTSDALE AIRPORT RUNWAY | 15990 N. 82ND WAY

SCOTTSDALE, AZ 85260 | SCOTTSDALE AIRPORT



Commercial Properties Incorporated is offering this property under a Co-Brokerage agreement with:

**DMD**  
BROKERAGE, INVESTMENT, INVESTORS

**REAL ESTATE  
GROUP**

**Douglas M. Davies**  
M: 602.550.8989

douglas@thedmdgroup.com



**COMMERCIAL PROPERTIES INC.**

Locally Owned. Globally Connected. CORFAC

TEMPE: 2323 W. University Drive, Tempe, AZ 85281 | 480.966.2301  
SCOTTSDALE: 8777 N. Gainey Center Dr., Suite 245, Scottsdale, AZ 85258 | www.cpi.az.com

**Shane McCormick**

D: 480.968.9618

M: 480.720.6250

smccormick@cpi.az.com

The information contained herein has been obtained from various sources. We have no reason to doubt its accuracy; however, J & J Commercial Properties, Inc. has not verified such information and makes no guarantee, warranty or representation about such information. The prospective buyer or lessee should independently verify all dimensions, specifications, floor plans, and all information prior to the lease or purchase of the property. All offerings are subject to price change, prior sale, lease, or withdrawal from the market without prior notice. Effective: 11/04/22



# SCOTTSDALE AIRPORT RUNWAY | 15990 N. 82ND WAY

SCOTTSDALE, AZ 85260 | SCOTTSDALE AIRPORT



Commercial Properties Incorporated is offering this property under a Co-Brokerage agreement with:

**DMD** | REAL ESTATE GROUP  
BROKERAGE, INVESTMENT, INVESTORS

**Douglas M. Davies**  
M: 602.550.8989  
douglas@thedmdgroup.com



**COMMERCIAL PROPERTIES INC.**

Locally Owned. Globally Connected. CORFAC INTERNATIONAL

TEMPE: 2323 W. University Drive, Tempe, AZ 85281 | 480.966.2301  
SCOTTSDALE: 8777 N. Gainey Center Dr., Suite 245, Scottsdale, AZ 85258 | www.cpi.az.com

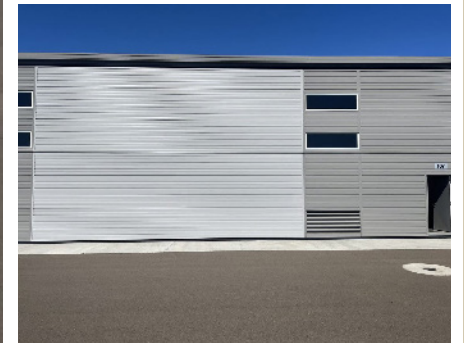
**Shane McCormick**  
D: 480.968.9618  
M: 480.720.6250  
smccormick@cpi.az.com

The information contained herein has been obtained from various sources. We have no reason to doubt its accuracy; however, J & J Commercial Properties, Inc. has not verified such information and makes no guarantee, warranty or representation about such information. The prospective buyer or lessee should independently verify all dimensions, specifications, floor plans, and all information prior to the lease or purchase of the property. All offerings are subject to price change, prior sale, lease, or withdrawal from the market without prior notice. Effective: 11/04/22



# SCOTTSDALE AIRPORT RUNWAY | 15990 N. 82ND WAY

SCOTTSDALE, AZ 85260 | SCOTTSDALE AIRPORT



Commercial Properties Incorporated is offering this property under a Co-Brokerage agreement with:

**DMD** | REAL ESTATE  
GROUP  
BROKERAGE, INVESTMENT, INVESTORS

**Douglas M. Davies**  
M: 602.550.8989  
douglas@thedmdgroup.com



**COMMERCIAL PROPERTIES INC.**

Locally Owned. Globally Connected. CORFAC

TEMPE: 2323 W. University Drive, Tempe, AZ 85281 | 480.966.2301  
SCOTTSDALE: 8777 N. Gainey Center Dr., Suite 245, Scottsdale, AZ 85258 | www.cpi.az.com

**Shane McCormick**  
D: 480.968.9618  
M: 480.720.6250  
smccormick@cpi.az.com

The information contained herein has been obtained from various sources. We have no reason to doubt its accuracy; however, J & J Commercial Properties, Inc. has not verified such information and makes no guarantee, warranty or representation about such information. The prospective buyer or lessee should independently verify all dimensions, specifications, floor plans, and all information prior to the lease or purchase of the property. All offerings are subject to price change, prior sale, lease, or withdrawal from the market without prior notice. Effective: 11/04/22