
Desert Discovery Center Exhibition Concept Design

July 2017

Thinc™

Table of Contents

Executive Summary	4	Appendix	99
Strategic Framework	6	01 Contract Deliverable Checklist	100
Goals	7	02 Exhibit Procurement List	101
Education Strategy	9	03 Graphic Mood Board	109
Research Strategy	11	04 Draft Branding Strategy	110
Concept Overview	12	05 Desert Discovery Center Research References	111
A Collaborative Model	14	06 Desert Discovery Center Research Contacts	126
A Sense of Place	17		
The Four Questions	18		
Storyline Development	19		
Introduction: You are Here	20		
Keeping It Vibrant	25		
The Pod: Desert Time	29		
Pavilions			
1. Bajada: Biodiversity and Connectivity	36		
2. Mountains: Source and Inspiration	45		
3. Tom's Thumb: Deep Time	56		
4. The Wash: Water in the Desert	64		
5. Saguaro Sundial	76		
6. City: On "The Edge"	85		

*In the end we will
conserve only what we love,
we will love only what
we understand, and we will
understand only what we
are taught.*

Baba Dioum

Executive Summary

Thinc Design is pleased to present an Interpretive Plan for the Desert Discovery Center in Scottsdale, Arizona. It is a privilege to work on this City of Scottsdale project, an exemplar of passionate local commitment to a vision. That vision informs and inspires this Interpretive Plan for the Center—a signature experience for Scottsdale with the potential to develop inclusivity, stewardship and education outcomes for its local communities; a must-visit tourist attraction that is grounded in authenticity; and a premiere, 21st century center for drylands research and sustainable living that engages everyone. The collaboration with the City of Scottsdale, the Desert Discovery Center Scottsdale, John Sather of Swaback Partners, and the many, dedicated stakeholders we have met, is a fertile and exciting environment, and we are honored to be a part of bringing this vision to life.

This Interpretive Plan develops site-specific storylines and design concepts for interpretive experiences throughout the Desert Discovery Center. The written document includes: a summary of the strategic framework, the interpretive concept overview, and storyline development for interpretive experiences at the Desert Discovery Center. The Plan builds on the October 2016 Project Definition Report and the insights provided through the February 2017 Interim Meeting Workshops conducted with members of the Salt River Pima-Maricopa Indian Community Cultural Resources Department & Cultural Preservation Program, the Scottsdale Unified School District, Experience Scottsdale, and Salt River Project. Additionally Interpretive content and design were additionally guided by collaborative meetings with project architect John Sather, and communications with advisors from

Arizona State University's Julie Ann Wrigley Global Institute of Sustainability, the Salt River Pima-Maricopa Indian Community, and The Nature Conservancy. This Plan also proposes a collaborative model for working with Arizona State University, Salt River Pima-Maricopa Indian Community, and other stakeholder communities and organizations.

Thinc Design

Thinc is a leading exhibition design firm that serves clients across North America and around the globe in Asia, Africa, and Europe. With more than 20 years of experience, Thinc has successfully completed projects for a wide range of institutions, including museums, science centers, aquariums, zoos, attractions, corporations, and governments. In current and recent projects—including the Cleveland Museum of Natural History and the Sustainability Pavilion for Expo 2020 Dubai—we are engaging an increasing focus on the relevance of the museum for elucidating the complexities of living in a changing world. We are very excited about the potential of the City of Scottsdale Desert Discovery Center to inspire people to consider how we contribute to change and become stewards of our environment, through a deep connection

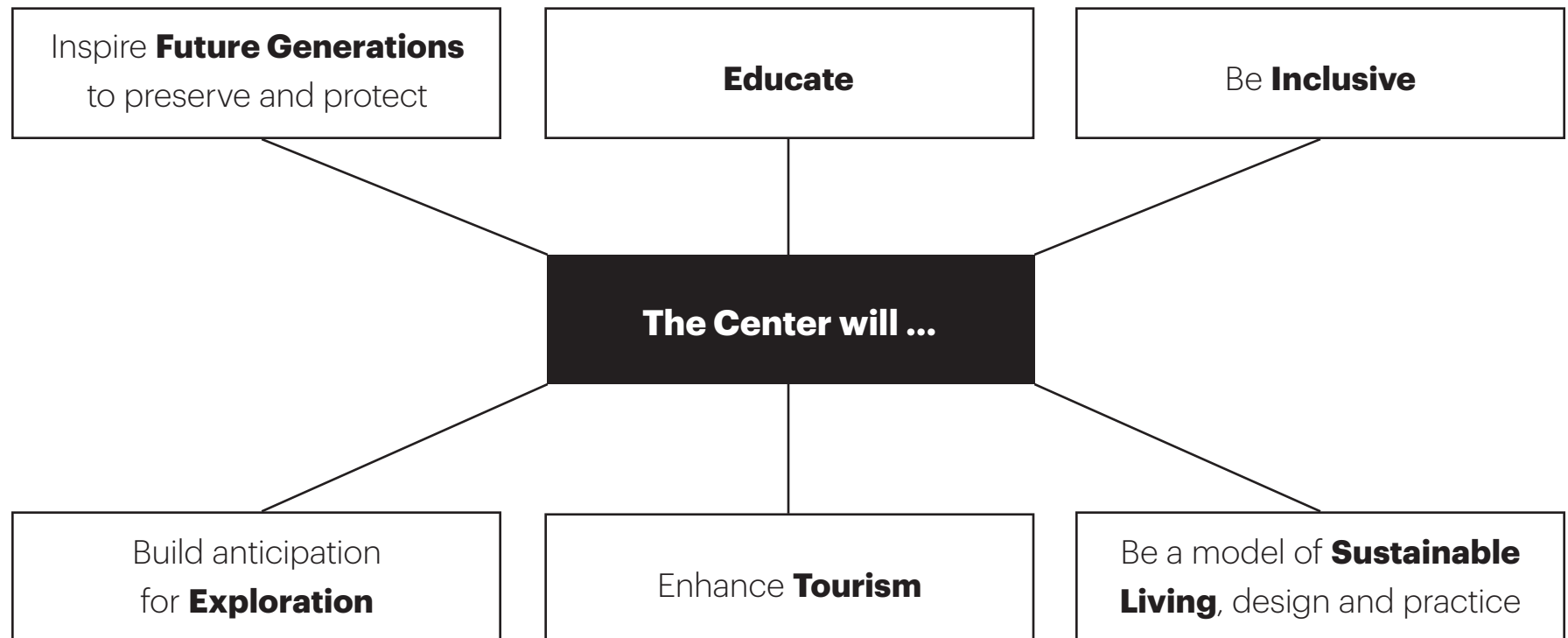
with and understanding of the Preserve and the desert's ecological systems. This is a local story that is also vitally important in many places around the world. A critical component of our design approach is a process that works towards enabling institutions to grow out of true engagement with the communities they represent and the constituents they showcase and serve. The initial stages of planning and design are driven by listening, conversation, outreach to scholars, educators, community leaders, and others who will ultimately interact with the new institution.

Strategic Framework



Goals

The Center is envisioned to be the focal point for education, research and dialogue about human interaction with arid environments as exemplified in the unique Sonoran Desert.



The Desert Discovery Center inspires us to claim the future in the spirit of possibility: our future and the future of this planet.

The Desert Discovery Center mission inspires the current and especially coming generations to not only take up the challenge, but to claim the future in the spirit of possibility: our future and the future of this planet. We start with the idea that we protect what we love, and love what we know. In the Center, experiences that excite us, rouse emotions, provoke reactions, awaken our senses and make us feel differently can inspire a shift in perspective with enduring impact. Stirring our imaginations and emotional responses can lead to deeply felt connections with ideas and the surrounding landscape. This is the transformative potential of a visit to the Desert Discovery Center.

Ultimately, at the heart of every mission are the people who engage and give meaning to it. The Center's wide-ranging group of stakeholders will be a key piece to creating a sustainable future in the desert—from local residents to visiting tourists, citizen scientists to arid land specialists, families with young children to life-long learners, hikers to armchair enthusiasts. As the world gets hotter and drier, all of us have a stake in better understanding desert environments. The Desert Discovery Center will be a site of international exchange: to share research on desert species, arid environments, and urbanization —particularly for regions facing increasing aridification. For those

who have never taken a hike in the Preserve, or are unable to, the Center will be their first exposure to the undeveloped desert. Dynamic, sensory-inspired experiences and live programming will open this wondrous ecosystem to the uninitiated... and its hidden and hard-to-see facets to everyone.

Education Strategy

The Desert Discovery Center offers people a special opportunity to learn about the desert experience from within the McDowell Sonoran Preserve. At this unique site, the Center facilitates a deeper exploration of the desert around us to inspire critical thinking, contemplation and dialogue around dryland ecosystems and sustainable ways of living. As a core, public service of the Center, educational experiences are designed with a range of learners in mind—from youths to adults, long-time residents to out-of-town visitors, life-long naturalists to professional educators—to pique curiosities, challenge preconceived notions, and broaden perspectives on the desert and our relationship with it. Education programs at the Center empower people of all ages to explore like scientists, investigate our natural and cultural worlds, and become meaningful contributors to our complex global society. The Desert Discovery Center is designed to

accommodate a robust educational program for children ages 3-18 years old; the focus is on fun, hands-on learning activities that foster critical thinking skills and nurture a deeper (and potentially lifelong) interest in science.

At the Sonoran Steps amphitheater, explorers young and old can experience native wildlife up-close with trained handlers. Families can choose from an array of programs, such as: guided on-site tours with Center educators, hands-on workshops and arts-based activities in the Sonoran Room, and exploratory science programs drawing on the Center's collections (eg. fossils, plant specimens, music, etc.) at the Center PlayLab.

An educator's focus group conducted in February 2017 revealed that local teachers welcomed additional resources on desert ecology. They described how many of their

students know more about animals in other parts of the world than the ones in their own desert habitat. One teacher expressed the concern that "our kids don't understand the relevance of living in the desert." Another educator stated, "We've fallen in love with the desert, and we want them to love it too." Pre- and post-visit Center lesson plans help teachers make the most of class field trips to the Center, which give students an opportunity to apply concepts introduced in the classroom to its environmental context.

Education Strategy

The Desert Discovery Center lesson plans align with the Scottsdale Unified School District's curriculum and support Arizona and National Standards to create a strong foundational basis for future learning in the McDowell Sonoran Preserve. On-site school programs incorporate the Preserve itself whenever possible, and focus on tactile, hands-on desert experiences, applying scientific investigation to real specimen collections, and using science in their everyday lives.

Older students have an opportunity to combine scientific inquiry with digital media production, and to become the Center science ambassadors as teen docents and digital content producers. The Center also connects people to citizen science projects currently conducted in the Preserve by the McDowell Sonoran Conservancy Field Institute, and provides a venue for citizen scientists to come together and pursue shared interests.

The Center's educational reach goes beyond the site itself, extended through: teacher training programs, lesson plans and instructional tools for educators (eg. photographs, models, maps, touchable specimens, etc.), live interactive video broadcasts, and virtual student-exchange programs with other desert communities. Working with Arizona State University's Julie Ann Wrigley Global Institute of Sustainability's Ecology Explorers program, the Center has developed a pilot program that provides professional development to Valley K-12 educators and works with them to generate new lesson plans. In addition, Scottsdale Community College students will be trained to facilitate classroom lessons at area schools, forming the next generation for science educators and mentors.

Arizona State University's Global Drylands Institute

With the establishment of Arizona State University's Global Drylands Institute (GDI) at the Desert Discovery Center, local and global citizens will benefit from ground-breaking, interdisciplinary arid lands research and conservation at the McDowell Sonoran Preserve. The Institute will elevate world-wide understanding of desert ecosystems, and improve our ability to preserve and sustainably manage them in the face of unprecedented change. Drylands contain a large and rapidly increasing portion of the world's human population; and GDI's use-inspired research will draw sustainability paths for the Valley and for different dryland communities around the world.

The Institute takes an interdisciplinary approach to living in the desert, drawing from a collaborative synergy between ASU's College of Liberal Arts and Sciences and the Julie Ann Wrigley Global Institute of Sustainability to better understand our connections to desert organisms and ecosystem processes. Proximity to the

Preserve supports research on such topics as: urban ecology and sustainability, saguaro biology, bat biology, hydrology, soil crusts, and sustainable tourism, as well as, the training of a new generation of leaders, students and practitioners in the field. Lead by ASU faculty, the Institute will support and host the activities of post-doctorate fellows, research teams, mid-career scientists, and early-career scholars that will contribute to our understanding of the mechanisms that support the high-level functioning of drylands. ASU has developed partnerships with both research institutions around the world and local naturalist organizations to lead the field in applying integrated approaches to the challenges of global sustainability.

At the Desert Discovery Center, the Institute will have a valuable venue for immersive public engagement and a direct connection to a diverse base of stakeholders through its Open-Door Field Station labs; research-driven content for conferences, public programs and

exhibitions; curriculum support for young (K-12) learners; immersive virtual field-trips; and citizen-science and docent-training programs such as ASU's "Desert Keepers." Desert Keepers are graduate and undergraduate student scientists who work with expert advisors to develop on-site research projects that can benefit, and benefit from, a public component, whether through public programming and/or citizen science projects. Student docents guide visitors through an experience of the Center from an accessible, scientific point of view, fielding and prompting new thinking around people's questions. GDI's commitment to research, education and innovation at the Center establishes the Preserve, the Desert Discovery Center and City of Scottsdale as the global exemplar for proactive and sustainable preservation of arid lands and urbanizing areas.

Concept Overview



The Desert Discovery Center “will be inspiring and engaging... an ‘only here’ immersion in our beautiful McDowell Mountains and Sonoran Desert.”

Many people seek experiences that connect them with the “real place”; they want to know what is unique and special about a place, and often seek out the one or two experiences that will fulfill an accurate understanding of the environment and history. The Desert Discovery Center is one of those authentic experiences, owing to both its unique location at the McDowell Sonoran Preserve and its dedicated community of desert scientists, artists, environmentalists, educators, life-long learners, and cultural stakeholders.



Christine Kovach releases a red-tailed hawk at the grand opening of the Bajada Nature Trail in September 2009. Scottsdale Public Library.

A Collaborative Model

An Open Door “Field Station”

The Desert Discovery Center’s academic partnership with Arizona State University will create an international repository of ideas for arid environments—a place for sharing and communicating what leading experts in the field are learning about the desert. As such, ASU will also be positioned to attract experts from other research institutes to participate in these programs. For the public, this means a one-of-a-kind guest experience—an inside look at what makes the Sonoran Desert unique and important. The Center “Field Station” experience gives people an opportunity to directly engage with ASU scientists in “open door” labs, or even participate in research projects in the Preserve.

ASU brings a multi-disciplinary strategy to the Center’s concept of “living in the desert,” with faculty often working across the boundaries of

their respective fields. At the Center, people can see the desert through many lenses: the humanities, life sciences, earth sciences, human ecology, and sustainability; and make a personal connection with the environment in a myriad of ways—as a citizen scientist in the field, in a hands-on workshop, at an international TED Talk on arid lands, or in conversation with a trained docent. In this way, the Desert Discovery Center is a unique public-facing, communication channel for the projects in-progress and the outcomes.

The future of the region is in the hands of the next generation, and there is potential to create a model for transdisciplinary study at the Center that strengthens this investment in the future. Through ASU and its global community of faculty and students, and meaningful partnerships with The Nature Conservancy, the McDowell

Sonoran Conservancy and Field Institute, The Phoenix Zoo, the Desert Botanical Garden and others, a robust community of scientists, conservationists, environmentalists and stewards will contribute to a process focused on creative content-making, fluid leadership committees, and a democratic and inclusive approach to interdisciplinary engagement. These collaborative activities can create an environment that promotes next-generation engagement and multi-pronged thinking. A graduate-level corps of student scientists can work with expert advisors to develop on-site research projects that can benefit, and benefit from, a public component, whether through public programming and/or citizen science projects. In addition, opportunities to work with ASU’s technical expertise in digital media and earth observation technology will contribute to the ongoing development of digital exhibits that highlight cutting-edge work.

A Collaborative Model

The Desert Discovery Center's vitality is drawn from the collective expertise of this community, and a reciprocal relationship that shares knowledge of the Preserve's ecosystem, drylands research, and educational best practices. To provide a strong foundation for docent training and public programming. A collaborative field station approach at the Center creates a dynamic relationship between new research, our experiences of the Preserve, and our vision for a sustainable future in the desert.

Salt River Pima-Maricopa Indian Community

The Desert Discovery Center is positioned to inspire generations of local residents and tourists to see the desert with a fresh perspective: not as a separate, uninhabited landscape, but as the ground beneath our feet. As an environment that people live in, everyday, with many fellow species, and with whom they share the supply of water and air. A place that inspires us to meet the challenges of the environment with both research and creativity.

Native American worldviews on the species, ecological systems and cycles of the desert are an integral part of the content, and inform the design. Indigenous concepts also inform the strategic framework for the Center: our responsibility for seven generations into the future, a deep respect for the landscape and models for resilient resource use—all highly

relevant for local sustainability. An ongoing partnership with the Salt River Pima-Maricopa Indian Community is one way to open hearts and minds to the desert, to a deeper understanding of our (human) place within the ecological system, and to other generations—past and future.

For thousands of years the O'odham people and their ancestors have made this desert home. The story of the Huhugam canal system is told within the context of an unbroken lineage from the Huhugam to the O'odham. This accurate retelling of the Salt River Pima-Maricopa Indian Community's ancestry broadens the desert story. The Huhugam scaled up their irrigation system to accommodate a large and growing population that absorbed migrants from drought stricken areas. But was this way of life sustainable? Subsequent generations returned

A Collaborative Model

to a way of life more in tune with the desert environment and its natural cycles. The larger question is not the mystery of the Huhugam's "disappearance," but how have people met the challenges of the desert and adapted to changes? Is a similar story unfolding before us, or can we tap into our deep knowledge of living in the desert to sustain ourselves and future generations?

The Salt River Pima-Maricopa people express their sense of place with sacred songs, each representing a mountain that marks the boundary of visible lands. These songs connect them with their ancestors who also saw and sang about the same ancient landforms, and singing the songs brings the landscape to life when they are far away from the region. The songs are passed from generation to generation. At the Center, people are encouraged to consider what makes a place sacred or important to them. What do we do when we no longer recognize the places that spiritually sustain us?

What are today's stories that convey our connections to place, to our home in the desert? There are lessons to be gained from the traditional stories as well as the ones being composed today. The very words, "It's not time...." (eg. for these flowers to bloom) capture what we know about how things used to be, how they are changing, and our concerns for the future. Community narratives are not solely oriented in the past. Traditional ecological knowledge, along with core stories of the past, present and future, are woven throughout the Center's interpretative experiences and are designed in close working collaboration with the Salt River Pima-Maricopa Indian Community.

Respecting the sacred role and storytelling in the Community, these narratives will not be retold, but interpreted to highlight key ideas and lessons that will help people grasp ideas such as biodiversity, adaptation, connectivity and sustainability. With all aspects of the Center's work it is the spirit

of learning and collaboration that ensures its vitality. Community members may be involved with the Center's docent program, develop live programming and guided desert hikes with a focus on indigenous knowledge of the desert, or even advise on the café's menu offerings to feature local Native American dishes made with desert plants.

A Sense of Place

“Living in the Desert”

The City of Scottsdale and the greater Phoenix area are positioned to be models for life on earth in the 21st century. In making this desert home, people have always dealt with issues of sustainability. As the world becomes warmer and drier, many more parts of the world will come to resemble the Sonoran Desert; and more and more cities will look to the Sun Corridor to learn how to adapt to new conditions. The Center’s location within the Preserve, looking onto both the undeveloped desert and the urban skyline, is perfectly situated to inspire and educate people everywhere about desert ecosystems and how to live in them. Which view holds our future? While the word “preserve” evokes a past—it might, in fact, hold our future.

The design concept for the Desert Discovery Center interweaves six distinctive vistas out to the land with impactful experiences and transitional spaces that link indoors and out. This is envisaged as a fluid journey that may or may not have a linear pathway. Its

signature move is a consistent but varied flow of three types of experiences: looking in (exploring exhibits and experiences), transitioning (experiencing spaces that cross from inside to outside) and looking out (carefully framed views to the landscape). The Desert Discovery Center will also be a site for quality rotating exhibitions that connect audiences to the Sonoran Desert, the city, and the world. Positioning the experience within the boundary of the McDowell Sonoran Preserve demonstrates the Center’s mandate: to reflect and develop the commitment that started the Preserve in the first place, and grow it into a 21st-century version for responsible investment in future generations: from preservation to sustainability.

The greater Phoenix metropolitan area is a large urban expanse; and while it is in the desert, for many, “going to the desert” is a day trip requiring planning and preparation. Area educators have observed that many of their students do not have a personal relationship with the desert. Their experience with desert

plants are often apart from their natural context as curated gardens or classroom specimens. The immediacy of the Preserve at the Desert Discover Center provides an authentic experience that conveys, “This is our home. We live in the desert.”

The Desert Discovery Center will be a portal to the desert for many city dwellers who might never think of going out for a hike. It will open people’s eyes to the absolute beauty and wonder of their own backyards; and perhaps in broadening their minds to it, make the desert more accessible and important to their lives. Like dipping one’s toes in the ocean waters, next time one might dive in and go exploring in the bajada.

The Four Questions

“The Four Questions” Approach

The Desert Discovery Center experience is grounded in a “sense of place” that starts with a surprising lens on the location itself, which offers views in all directions to the spectrum of “living in the desert”: the natural environment, the suburban streets, and visible in the southwest distance, the city. Views into the Preserve are further delineated by the variety of biomes: rocky mountainous outcrops, lush riparian washes and shrub-filled valleys. The breadth of desert life—not limited to wildlife but encompassing the local urban and natural environments—is the beginning of the story and the opening for exploring potential futures of coexistence and wellbeing.

The storyline is defined as “living in the desert” rather than “life in the desert,” which suggests species and ecosystems adaptation and a passive narrative. The inflection here is on how we—humans and our fellow species—have actively developed relationships with the desert, with a focus on local Sonoran Desert topics and how they demonstrate

some universal characteristics of desert life. The emphasis is on the present-day; the spectacular environment around us, and what we are learning and doing to take us forward into a sustainable future.

As a portal to the desert, the Center concept of “living in the desert” peels back the layers of the local environment, including our own history, myths and assumptions about the desert to reveal its unique dynamism and potential. We identified four questions to define our concept:

1. What is this place?
2. What don’t we see?
3. What can we learn from living in the desert?
4. What future do we want to create?

The Four Questions

What is this place?

What don't we see?

*What can we
learn from living
in the desert?*

*What future do we
want to create?*

Storyline Development



*The desert was our ocean....
It is our geography that truly sets us apart.*

As people enter the Desert Discovery Center, they are immediately introduced to the story of the McDowell Sonoran Preserve. In the face of urban expansion and encroachment, Scottsdale citizens recognized the pressing need to protect this part of the world for future generations. They began in 1990 by dedicating five square miles of the McDowell Mountains to the creation of the McDowell Sonoran Preserve. Today, the Preserve protects forty-seven square miles of Sonoran Desert habitat and serves as a vital wildlife corridor connecting the three-million-acre Tonto National Forest to the 21,000 acre McDowell Mountain Regional Park. Representing one quarter of the City of Scottsdale's total land area, it stands as the largest urban preserve in America. It is, at once, a portal to the sixth most populous urban settlement in the United States and to the most biodiverse desert in North America.

For about 7,000 years humans have been drawn to this distinctive landscape which formed 2 billion years ago of sedimentary, igneous, and metamorphic rocks—from Precambrian outcroppings to more recent volcanic deposits left in the neighboring Superstition Mountains 15 to 20 million years ago. Since 5,000 BCE, we have altered this geologically diverse place with our petroglyphs, dwellings, canals, and trails.

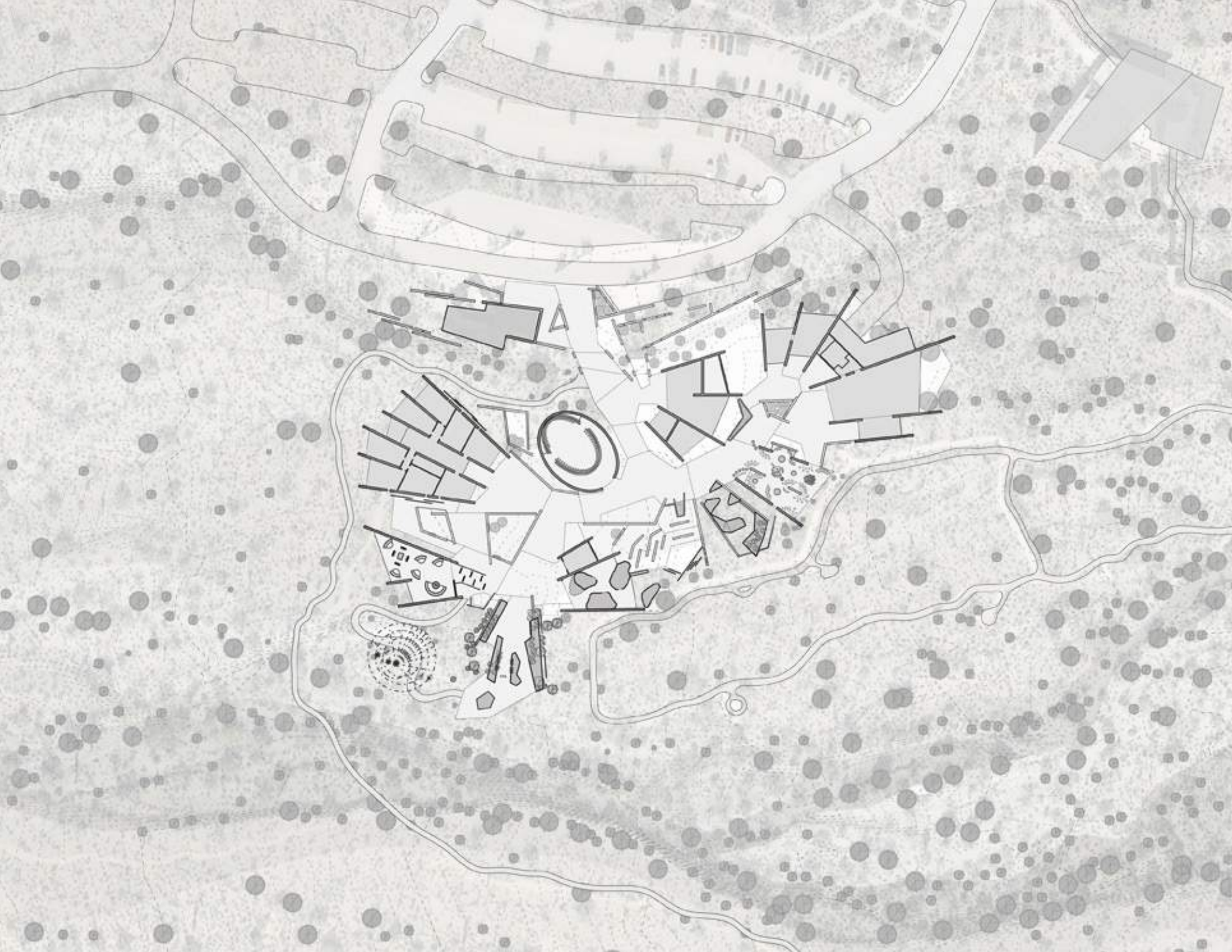
Perched on the edge of the Preserve, the Desert Discovery Center is ideally positioned to educate and inspire generations on the magnificence and vulnerability of the Sonoran Desert. At this crossroad between desert and city, scarcity and abundance, life optimizes opportunity and rewards resiliency; and as the Earth's climate changes, the world looks towards this hot, arid ecosystem—home to millions—in preparation for the future.

A split-screen map tells the founding story of the Preserve and allows people to orient themselves in the McDowell Sonoran Preserve, the Sonoran Desert, the City of Scottsdale, and the greater Phoenix metropolitan area.



Site







The Pod: Desert Time



City



Saguaro Sundial



Bajada



Mountain

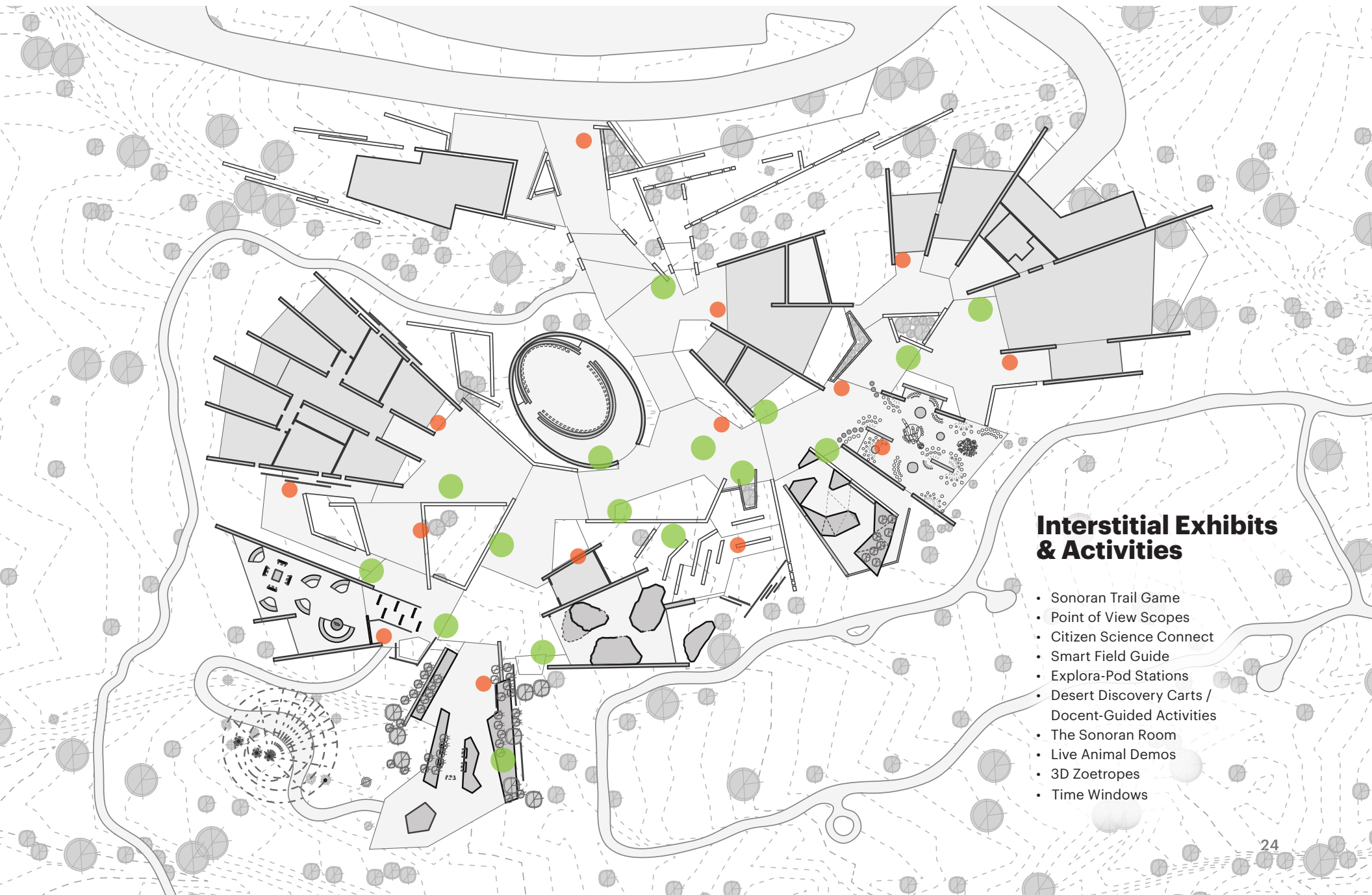


Wash



Tom's Thumb

Keeping It Vibrant



Interstitial Exhibits & Activities

- Sonoran Trail Game
- Point of View Scopes
- Citizen Science Connect
- Smart Field Guide
- Explora-Pod Stations
- Desert Discovery Carts / Docent-Guided Activities
- The Sonoran Room
- Live Animal Demos
- 3D Zoetropes
- Time Windows

Keeping It Vibrant

Our understanding of the desert expands and deepens as more people turn to arid lands for answers to our most pressing sustainability questions and needs. The Desert Discovery Center is a place where people can keep up with exciting new research and begin to understand how this new knowledge impacts our lives. The Center's architecture encourages movement between interior and exterior spaces, as well as, views into the Preserve. These transition spaces will have interpretive experiences that call attention to how the Center's architecture and environmental design models sustainable desert living: Can the very sound of water cool us down? How does a cooling tower work? Is temperature or relative temperature more important to our comfort? What is the psychological benefit of nature? Visitor encounter guides and educators throughout the Center help people make connections between what they've learned in the exhibitions to what they see in the Preserve.

In addition to vibrant public programming, interpretive vehicles designed for changing content are placed throughout the Center, delivered through the Center app and/or kiosk stations. It is the Center's relationship and connection to stakeholders that will fuel its continual dynamism and relevancy. At the core of these experiences is the interaction among the Center's community of docents, scientists, environmentalists, cultural producers, locals and tourists.

Sonoran Trail Game

As soon as people step into the Desert Discovery Center, they become intrepid explorers on the Sonoran Trail. Each character, either human or animal, starts out with a unique profile and special set of adaptations. At each physical exhibit players make choices of how they will manage resources, build cultures and form relationships with their natural surroundings, so that by the end of their visit they have created a full narrative of what it means to thrive in the desert. At each spot, players get "boons" or "curve balls"

depending on the environment. How prepared are they to withstand insect infestation or extreme heat? Do they know how to take advantage of the approaching storm or find shelter from a predator? Hints are given along the way, and people learn how desert plants, animals and people have solved the same problems. This branching decision game is not about winning; rather it is about experimenting and can be experienced multiple times to different results. It can be played on personal devices through the Desert Discovery Center app or be installed at kiosks.

P.O.V. Scopes

Placed at strategic points around the Center, POV Scopes present a desert detail from the point-of-view of a local writer, artist, naturalist, member of the Salt River Pima-Maricopa Indian Community, Salt River Project worker, ASU scientist, or founding advocate for the McDowell Sonoran Preserve, etc. Stories are one way we make sense of the world, decide what to hold on to, and what to take care of. These view scopes allow people to compare

Keeping It Vibrant

what they see with what locals see, which may be imparted in a myriad of ways: through writing, music, historical photographs, soundscape, spoken word, visual art, etc. These vignettes may also be sent home as a digital souvenir “postcard” through the Center app.

Desert Wisdoms Station [Give One, Get One]

People can submit tips for living in the desert (eg. how to stay cool or harvest water on a hike), and receive a beautifully-designed keepsake card, inscribed with a desert wisdom, in return. From traditional ecological knowledge, to ways of repurposing everyday items, to tips on staying comfortable in a heat wave, each card celebrates local know-how and love of the desert. New public submissions are recorded to inspire new sets of Desert Wisdom cards for people to share and collect. Local artists may be commissioned to design special edition card sets.

Citizen Science Connect

The Desert Discovery Center connects people to citizen science and conservation projects around the country. As people engage with topics in the interpretive spaces, they learn about active projects that offer them an opportunity to contribute meaningfully to scientific research. For example, upon learning about the nectar corridor, one might want to help report observations on hummingbird feedings or simply support a worthwhile cause. Through the Center app or a handheld device, people can bookmark projects they find interesting at the Center and follow-up on them when they get home.

People at the Center and hiking in the Preserve can also contribute to real time data collection. Using the Center app and working in collaboration with Arizona State University, people can record real time data on climate (temperature), phenology (vegetation), and animal behavior. Data is stored and displayed in real time to show seasonal, daily and annual comparisons over time.

Smart Field Guide

The Smart Field Guide is both an app, and an on-site kiosk. People browse through a visual database of what they can expect to see in the Preserve. The information is organized in a variety of ways to anticipate different types of explorers: by time of day, habitat, trail, flora/fauna type, color, species health (lower risk, threatened, extinct), native or exotic, etc.

As an app, the Smart Field Guide provides maps of all the hiking trails in the Preserve, and allows hikers to share their hike with their social network and scientists at the Center. People can pick a trail that interests them and provide information on how their hike was, upload photos, share tips and experiences. Hikers can inform ASU scientists of interesting wildlife sightings from the trail, or perhaps post a photo and ask questions about what they’ve encountered. In turn, resident scientists can post questions to hikers. How many hummingbirds did you see today? Was there any erosion on the trail from last night’s

Keeping It Vibrant

storm? They can also highlight interesting things to look out for, depending on the season, on the Center's "Today in the Preserve" digital board, along with Q & A's and real time observations from the trail.

Explora-Pod Stations

Explora-pods are stand-alone, updateable stations that apply the Desert Discovery Center's 4-Question approach to current scientific issues: 1) "What is this [organism/ place/phenomenon]?" 2) "What don't we see?" 3) "What can we learn from this?" and 4) What implications does this have for the future? These stations are ideal for immersive macro/micro, time-lapse, transportive and immersive experiences. Content is produced in collaboration with Center's community of leading environmentalists and arid land specialists (Arizona State University and The Nature Conservancy) to present exciting research throughout the Center as it emerges.

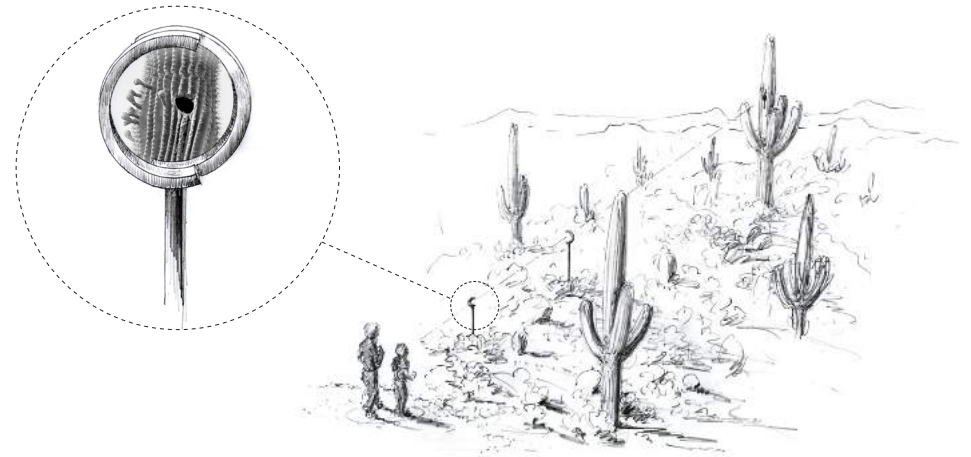
Live Animal Demonstrations & Workshops

Against the stunning backdrop of the McDowell Mountains, people come face to face with iconic desert wildlife. Raptors take flight in demonstrations at the Sonoran Steps; people get a hands-on introduction to native birds (owls, hawks), mammals (kangaroo rats, foxes), reptiles (tortoises, snakes, lizards), and invertebrates (tarantulas, scorpions). Public programming at the Center starts with the premise, "You love what you know, and you protect what you love." At the Center, people get to know and learn how to better live with their desert co-habitants.

Desert Discovery Carts

(Docent-Guided Activities)

Desert Discovery Carts put science in motion throughout the Center as ASU- and Center-trained docents engage people in lively conversation about current conditions in the Preserve and things they see at the Center. Through hands-on activities at each Cart, docents can conduct demonstrations and



Keeping It Vibrant

Imagine if the land around you were not only a source of refuge, inspiration, and pleasure, but were also the physical embodiment of your scriptures, your literature, your moral code, history and philosophy.

From *A Great Aridness: Climate Change and the Future of the American Southwest*
by William deBuys

introduce an up-close perspective on the desert: an opportunity to handle a saguaro cross-section or examine a million-year old fossil or taste foods derived from desert plants.

The Carts can also serve as stops on children's scavenger hunts. Children get their first scavenger hunt card with admission. As they solve the riddles on each card, they can collect a special stamp and the next card at any Desert Discovery Cart until they collect all the cards and stamps. Each completed card is also a souvenir postcard.

The Sonoran Room

The Sonoran Room opens its arms onto the Preserve, while engaging us in the question, "What is our story in the desert?" The desert can remind us of deep time and our place in it. It embodies our history as a people and our imagined tomorrows. It prompts nostalgia for past landscapes and delight in our own ingenuity. Stories help us recognize what is meaningful to us today... and perhaps what is important enough to us to invest towards our future.

It is a space that connects people of all backgrounds and generations through dialogues about living in the desert: from workshops with school groups, to international symposia on arid lands, "lab" demonstrations on green tech innovations, and multi-disciplinary events that explore ideas like Science and the Imagination, The Edge, and Green in the Desert. The Desert Discovery Center is a generator of ideas for arid environments, sharing and communicating what we've known and what we continually learn about living in the desert. Events at the Center are live-streamed to audiences around the world and stored in its accessible, online library. Public programs demonstrate how to forge cross-disciplinary approaches to address environmental issues in new and innovative ways.

The Sonoran Room also connects people to what roots us to the desert. Using the Sonoran Desert Jukebox, people choose from a pool of key words that best describes the desert to them. Based on these word tags, the Jukebox

database of poetry/ quotes that represent the region's multiple cultural influences, finds the best match for their key words. Each piece is coupled with a desert soundscape. The effect can be energizing or quiet, capture the feeling of the heavy heat or coolness of night, etc. People can submit their piece into the "jukebox" of experiences that get "played" environmentally—projected writing and soundscapes that subtly animate and give texture to the room. Each environmental piece gets played in the order of their submission.

Changing Exhibitions

In addition to public programming, the Center will host a range of changing exhibitions and programs that give audiences access to works by leading research institutions and cultural producers, and that highlight the unique experiences of life in this desert and in other drylands around the world.

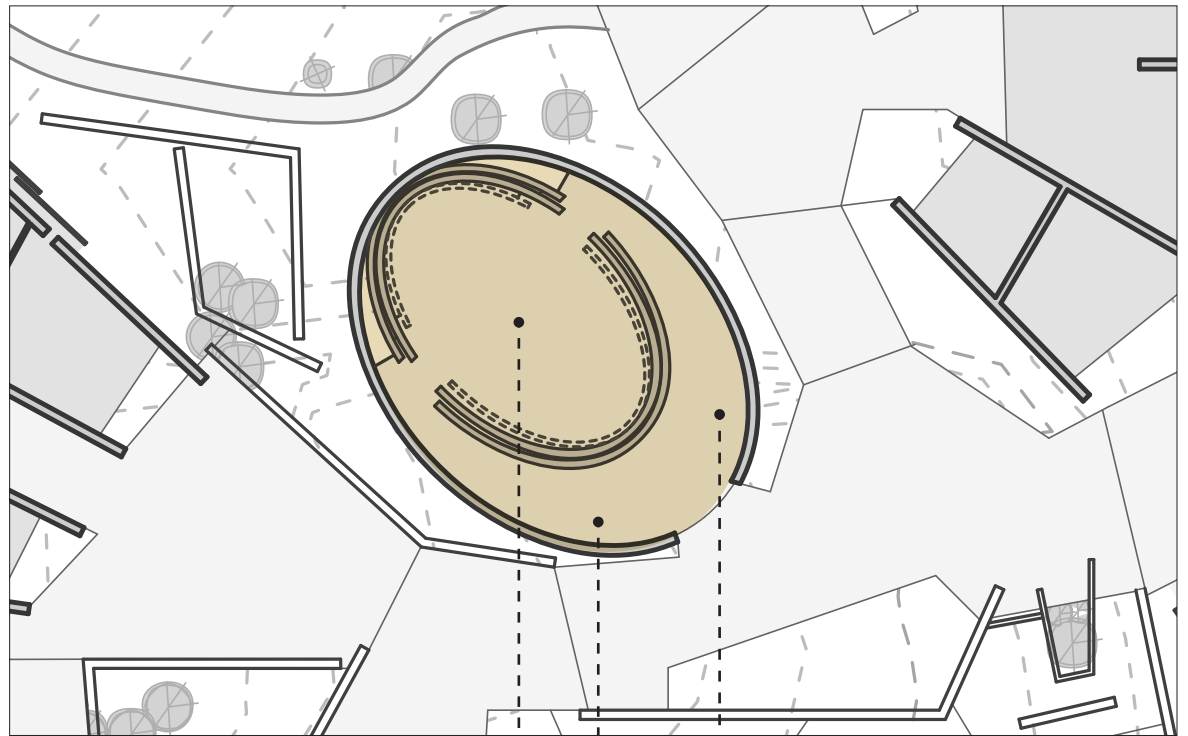
The Pod: Desert Time



*It is real desert people who lift their faces
upward with the first signs of moisture.
They know how to inhale properly.
Recognizing the aroma of creosote in the distance.
Relieved the cycle is beginning again.*

From "Proclamation"
by Ofelia Zepeda

The Pod: Desert Time

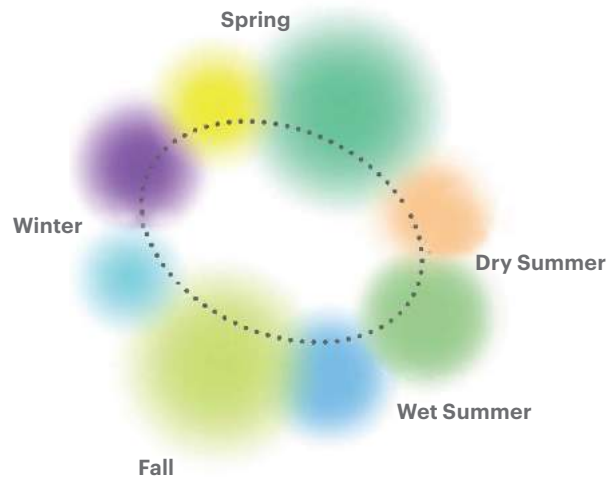


Desert Time Experience

Aroma Corridor

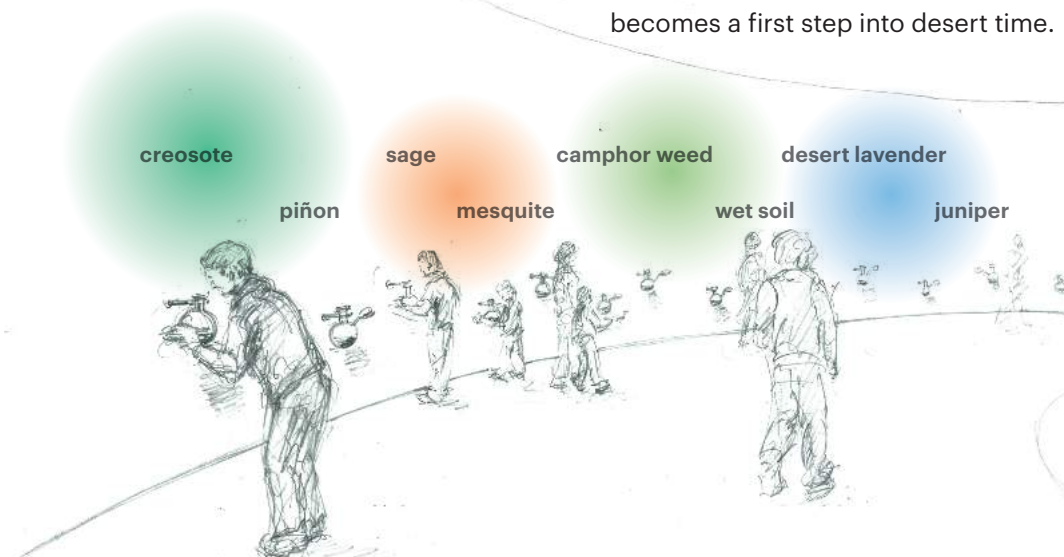
Sound Corridor

The Pod: Desert Time



For the uninitiated, the desert may seem a barren, lifeless place. A first immersion dispels this stereotype in a vivid, 8-12 minute experience that reveals the short and long rhythms of life in desert. The truth is, life is everywhere here. If we tune our senses to the desert, it will open its hidden worlds to us. In Desert Time we learn how to look at the desert, and we are invited into its unseen spaces.

The approach to the Pod follows a long, curving wall. Along the wall are “aroma stations”—containers of concentrated aromatic oils with atomizers - where people can experience distinctive scents of the desert; eg. creosote, sage, camphor weed, wet soil, juniper, pinon, mesquite, desert lavender. The scents occur in the same sequence that they occur throughout a desert year, so the procession to the theater becomes a first step into desert time.



The Pod: Desert Time

When people arrive in the cool space of the Pod, they may take a seat on a comfortable bench or a floor cushion. Audio is delivered through binaural headphones which provide rich sounds with a vivid sense of location, movement, and a highly realistic three-dimensional effect.

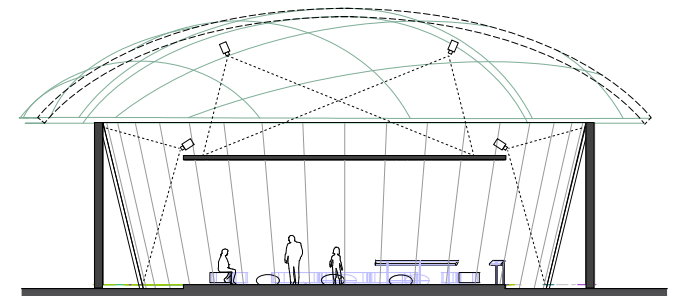
Desert Time is visually organized into three “rings” of video presentation. The primary level presents desert life at larger-than-life scale. Above, images indicate the passage of time—the sun rises over the mountain range, dramatic weather events signal seasonal changes, and stars move across the night sky. Below, the desert floor completes the immersive experience. Temperature readings tell us how cold the desert has become at night. The video opens with a quick time-lapse of the year and then slows down. We go through the seasons again, this time zooming in, going in, sometimes taking on the perspective of an animal inside its burrow. We look out onto the desert scrub, realizing as we

zoom in that a rattlesnake has camouflaged itself in the sand. An elf owl feeds her young in their saguaro home. The sounds of the desert are experienced three-dimensionally, and people become aware of the snake at their feet or the pollinating bees behind them.

The desert’s five seasons are marked by the rhythms of: drought and flood, dormancy and activity, celestial bodies, migrations, monsoons, desert blooms. People experience desert time as the drama unfolds at the primary level—the spadefoot toad spends nine months buried in the sand, only to resurface when powerful summer monsoons drench the ground. The desert is full of their loud proclamations. Birds announce the storm’s end by marking territories with their song. Flowers paint the horizon with their pollen-filled blooms.

Through high-definition, multi-scaled visuals and three-dimensional audio, people experience a desert drama timed with the seasons and made extraordinary by the adaptations that make life here possible.

As people exit, they experience the distinctive aural prints of the desert. In-between timed screenings, the Desert Time Pod can provide a simple environmental immersion experience that people enjoy at their own pace.





The Pod: Desert Time



Bajada: Biodiversity and Connectivity

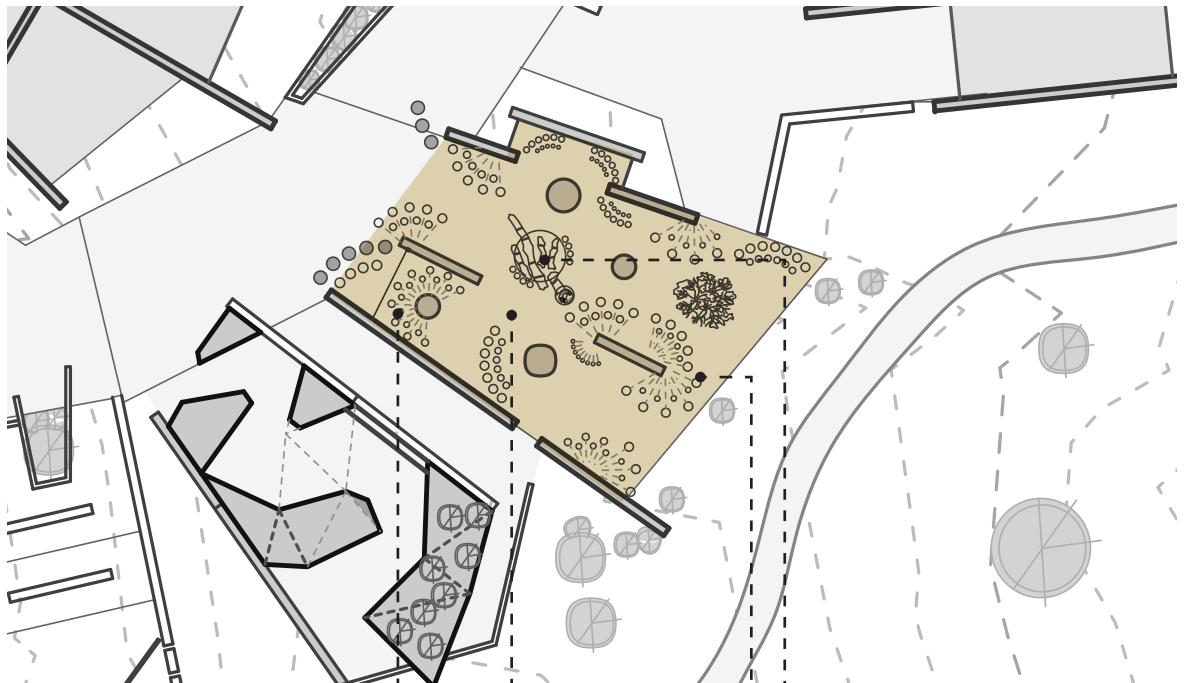


*Small mice scurry along moist sand.
Pack rats tremble in the brush.
Rabbits freeze, pretend to be invisible.
Mourning doves do not coo.*

*All understand balance and
the desert is thankful you are here.*

From "Harris's Hawk"
by M.E. Wakamatsu

Bajada: Biodiversity and Connectivity



Fly the Nectar Corridor

Web of Life

Build an Ecosystem

Desert Voyage Windows

Bajada: Biodiversity and Connectivity

What is this place?

The McDowell Sonoran Preserve is a part of the Sonoran Desert—the most biodiverse desert in North America, which supports 60 mammal species, 350 bird species, 20 amphibian species, over 100 reptile species, 30 native fish species, over 1000 native bee species, and more than 2,000 native plant species. The entire Sonoran Desert encompasses more than 100,000 square miles of southwestern Arizona, southeastern California, northwestern Sonora and most of the Baja Peninsula. Ecosystems thousands of miles apart, including ours in the McDowell Sonoran Preserve, are connected by the Sonoran Desert Nectar Corridor, which fuels the migration of pollinators with flowers that bloom in seasonal sequence. Throughout time, people have also blazed trails through here. Millions have called it home.

What don't we see?

The bands of green across the McDowell Mountain foothills signal where water is and used to be. Upon closer inspection, there

is life in these crevices, in the numerous microhabitats created in between rocks, and in their deep and water-absorbent soils. Storms in the McDowell Mountains discharge water onto the rocky slopes, and bring down rich debris to the bottom of the McDowell Mountains, creating bajadas or coalesced alluvial fans that support a rich diversity of plants. While much of the Sonoran Desert lies at fairly low elevation, this region is punctuated by mountain ranges; their gradients of elevation and moisture support a large array of biotic communities. From microbes in the soil, to plants, animals, and people, the desert is teeming with life.

What can we learn from living in the desert?

Once life takes root, it adapts to the desert's extreme environment to not only survive, but thrive. Specialized adaptations may end up requiring the very heat and drought conditions that non-native life forms find burdensome; and the desert environment becomes necessary, as much as the species inhabiting

it, to maintain the community's structure. Over thousands of years of evolution, desert flora and fauna have come to rely on each other in specific, mutually-beneficial ways. We all depend on this multi-layered and interconnected system. Biodiversity is part of our life-support system. It has not only ecological, economic, spiritual, cultural, and aesthetic importance, but gives our system greater resiliency.

What future do we want to create?

Interdependence among organisms and their environments creates conditions we need for survival: clean air and water, crop pollination, pest control, climate regulation, nutrient rich soils, and a diversity of plants and creatures. Biodiversity gives us greater resiliency, and a future in which we can adapt to changes and harsh environments.

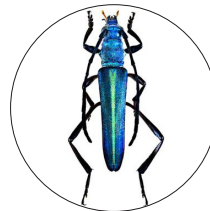
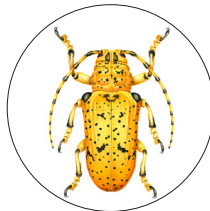
Bajada: Biodiversity and Connectivity

Interpretive Experiences

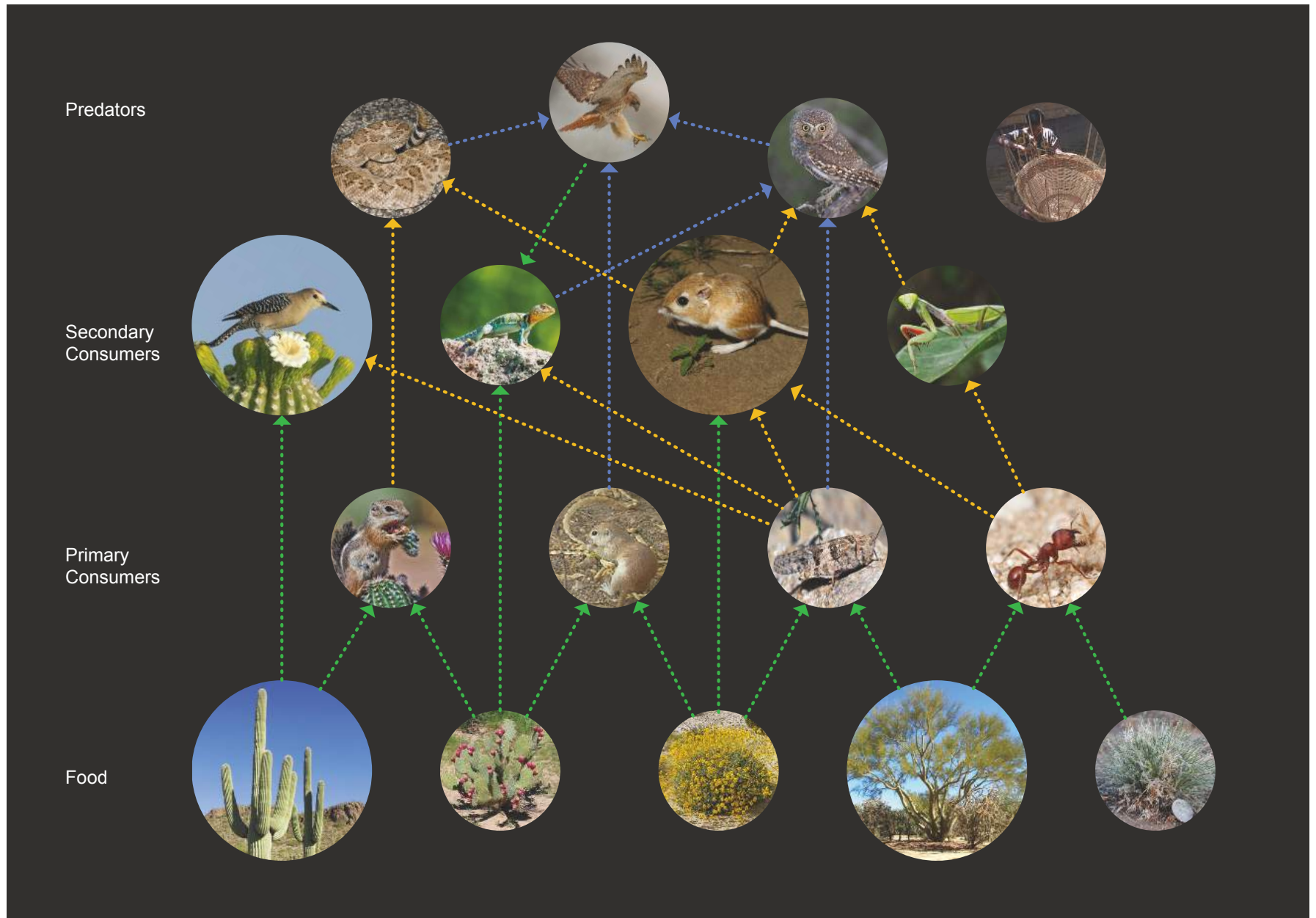
1. Web of Life

People walk into a space that is active and teeming with life. It is a biotic representation of the landscape just outside the window—hundreds of species of flora and fauna that call the McDowell Sonoran Preserve home. Handsome sculptures and illustrations of desert microbes, flora and fauna float, crawl, and slither around floating pedestals of natural rock. Selected sculptures are animated by sound and projection, and nocturnal organisms inhabit darkened, cool spaces. All are connected by ribbons of LED lights; and as people touch particular sculptures, they light up to reveal the “invisible” connections between organisms.

Engaging with the biota, people discover the many types of ecological interactions (symbiosis, mutualism, commensalism, parasitism, etc.) that support the desert ecosystem. Humans are intricately connected in this web of life as well, and are represented by artifacts relating to food, medicine, ritual, clean air and water, etc. to show how we benefit from (and impact) these relationships. As our climate and habitats change, so does our web. Threatened, endangered, and extinct species are represented as ghosted sculptures to raise the issue of species loss and its potential impact to our ecosystem and our way of life. The ripple effect of extinction can be depicted through a scene played out in augmented reality.



Bajada: Biodiversity and Connectivity



Bajada: Biodiversity and Connectivity

Pollinators



Nurse Plants



Seed Dispersers



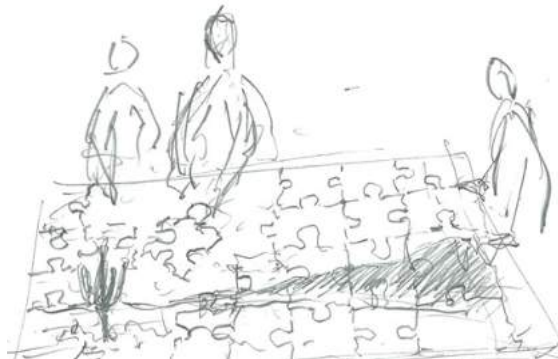
Bajada: Biodiversity and Connectivity

2. Fly the Nectar Corridor

This multi-player game invites participants to become pollinators (eg. birds, bats, bees) on their annual migration across the Sonoran Desert. The goal is to discover and pollinate the kinds of flowers that attract their chosen creature by recognizing shape, color, nectar, pollen, and perfume. Along the way they encounter challenges that range from shifting climate patterns affecting the timing of floral blooms to the late hatching of insects. The pollinators travel through the unique biomes of the Sonoran Desert, from cold conifer forests to hot dry deserts that run right up to the ocean in a beautifully rendered environment. Players will explore the migratory seasons and paths of the desert's pollinators and how changes to the nectar corridor impact food crops and other species. The game is played on a projected surface that curves from the floor to ceiling to create an immersive feel.

3. Build an Ecosystem

Participants are challenged to create an interdependent ecosystem that will flourish in the Sonoran Desert. They manipulate physical playing pieces on top of a digital table to create an environment and then view the resulting flourish of life through augmented reality. This multi-player experience presents requires collaboration to determine what lifeforms (from soil microbes to flora and fauna) are required to create a diverse and resilient ecosystem within unique challenges



relating to climate change or human activity. The game can potentially integrate the tradition of Native American storytelling (with the permission of the Salt River Pima Maricopa Indian Community) to highlight relationships between different animals, plants and humans and their importance to the health of the natural world.

4. Desert Voyage Windows

Desert Voyage Windows offer views onto different parts of the Preserve, the Sonoran Desert, and deserts around the world over a 24-hour period, and over the course of a year. While the McDowell Sonoran Preserve is part of Sonoran Desert, one of the most biodiverse deserts in the world, it has its own unique character. Side-by-side views of different desert regions demonstrate the range of landscapes and life forms encompassed by the term "desert."

Bajada: Biodiversity and Connectivity



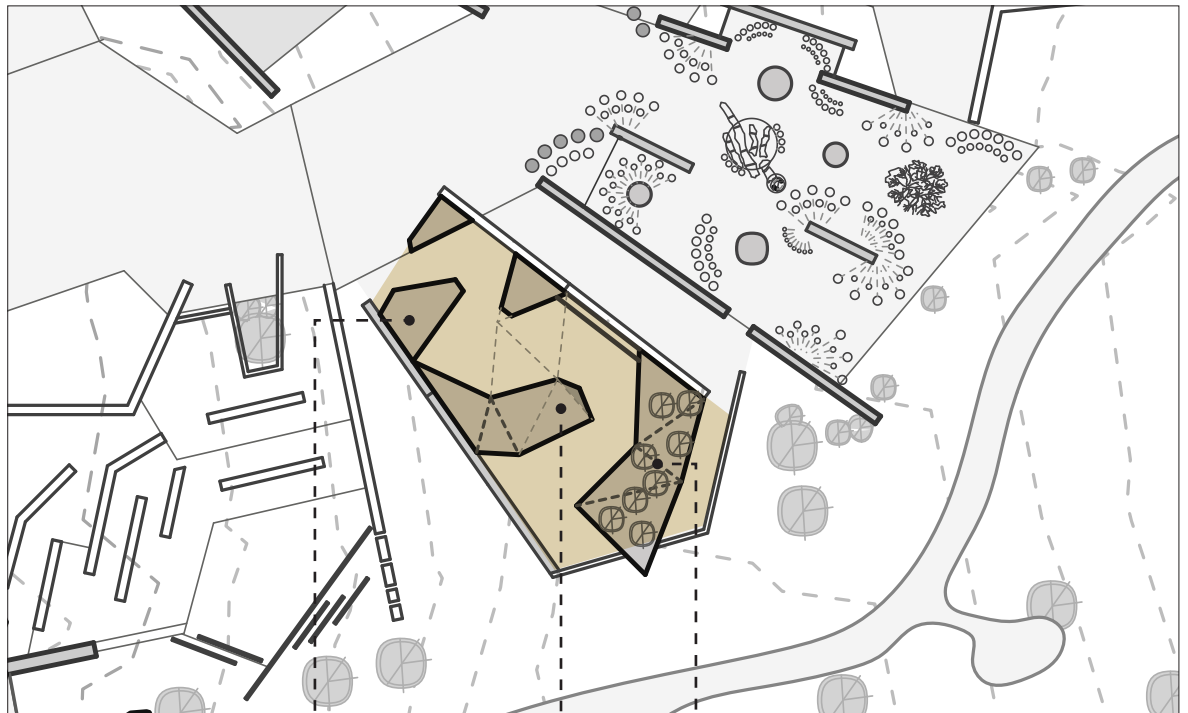
Mountains: Source & Inspiration



*We must come to them with music
so they are generous with the summer rains
that appear to start their journey from their peaks.
We must come to them with song
so they will be generous
with the winter snow that settles there.*

From "Music Mountains"
by Ofelia Zepeda

Mountains: Source & Inspiration



Mountain

Forest

350,000 Acre-Feet of Water
Erosion Tables
"Fire is Always About Water"
What is Your Watershed?

Soil

Magnification Room: Soil Crust,
Desert Pavement, Rock Varnish,
Geoglyphs & Petroglyphs
Plant Strategies
Plant-Speak
Burrowing Down
Minerals & Mining

Mountains: Source & Inspiration

What is this place?

The McDowell Mountains anchor our view here onto the Preserve; and we are drawn to their beauty and majesty as generations were before us. We have named their peaks, used their rock faces to calculate the solstices, marked and cut trails to navigate through them, sung songs to remind ourselves of our relationship with them, and drilled into them for their ancient stores of minerals and water. We seek refuge from the heat under the cool shade of their pines, and respite on their rivers and lakes. However, we also owe the very character of our desert—from its unique geological formations to its biodiverse inhabitants—to this mountain-valley topography; and we depend on its ecological systems for the very water, soil, and minerals that make life and industry in the desert possible.

What don't we see?

Many of the world's deserts, including the Sonoran Desert, occur in a zone around 30 degrees North and South - near the Tropics

of Cancer and Capricorn—products of the largescale forces of air, water, and earth. The great air and ocean currents create a region here of high pressure and descending hot dry air that is additionally impacted by the “rain shadow effect,” in which moisture-carrying air is blocked to the west by mountain ranges. The mountains give rise to the forest habitats and watersheds that help capture, store, and filter what little rain the region does get, and release it to the desert lands below.

What can we learn from living in the desert?

A desert is defined by aridity, but it is not completely absent of water. We depend on distant topographical features, ecological processes and weather events for the water we do get. Life here is optimally adapted to this very particular environment; in fact, drought is just as critical to the function of this ecosystem as the rain. Many desert adaptations are based on beneficial connections between species and synchrony with the seasons. However, if adaptations

cannot keep up with the pace of climate change, these connections run the risk of “de-linking” and even this highly adaptive ecosystem may not be able to sustain itself.

What future do we want to create?

How far is that ripple going to go? Understanding that natural systems like watersheds are so critical to life in the desert encourages us to embrace a systems approach to our future. In the words of Shane Anton of the Salt River Pima-Maricopa Indian Community, “If we take care of the land, the land can take care of us.” Seemingly unrelated habitats and biotic communities may show connections that reach back to us. If we look beyond our silos, we can broaden our thinking and understanding in service of more sustainable outcomes.

Mountains: Source & Inspiration

Interpretive Experiences

Members of the Salt River Pima-Maricopa Indian Community describe the natural world as three spheres that need to be in balance with one another—that which is above, on the ground, and below the surface. Against the backdrop of the McDowell Mountains, people move through these spheres (represented by Mountain, Forest, and Soil) to explore the life that supports and is supported by these ecosystems, including our own.

Mountains: What is above

People begin their journey high above the Earth. An arresting video of the “Breathing Earth” shows the arctic ice cap retreating and advancing over time, much like the rhythm of a living, breathing organism. The video zooms into the Western Hemisphere and an explanation of the natural forces and geography that led to the formation of the Sonoran Desert. Zooming into the Basin and Range Province, people learn that much of the region is punctuated by mountain ranges and is therefore host to many climates and biomes. Climbing 1,000 feet is equivalent to a 3.5°F drop in temperature, or to driving north 300 miles. These gradients of elevation and moisture help establish a great array of biotic communities in the Sonoran Dessert.

The American Southwest has experienced a 25% to 40% drop in rainfall over the past 50 years. When rain does fall, more of it falls on mountains because air travelling over land is forced up and over them. Rising air cools, creating condensation and rain. This now cooler and drier air then flows down the other side of the mountain, and like water, flows down into the desert washes.

Mountains: Source & Inspiration

Forests: What is on top of the ground

From the mountain top, people then enter a forest. In these regions, moisture tends to stick around for longer periods of time due to low temperatures and evaporation rates.

350,000 Acre-Foot of Water

A conifer tree installation demonstrates how watersheds in the Tonto National Forest produce an average of 350,000 acre-feet of water each year. Like sponges, forest vegetation and soils absorb melted snow and rainfall. The lower half of a conifer seems to break through the pavilion ceiling; and people engage up-close with its rootball. There is life among the roots, which exhibition techniques such as Pepper's ghost can animate here. People see how the spongy forest floor helps store and filter water underground until it is slowly released as springs, and flows into our streams and rivers. Without these "sponges", water would just hit desert rock, and there would be no permanent rivers. We need rain to fall in a gradual and consistent manner so our soil can absorb and store the water in the ground.

Conifers retain their needles throughout the winter. Their dark green needles help absorb heat and begin photosynthesis as soon as temperatures rise above freezing. Their stomata are positioned underneath a waxy cuticle to prevent water loss. When heavy snowfall accumulates, their conical shape helps to shed snow and prevent branches from breaking off. To combat cold temperatures, conifers produce resins that act like antifreeze. When the needles fall off, these chemicals leach into the soil creating a toxic environment for competing plant life.

Erosion Tables

Water erosion leads to topsoil and subsoil loss. Degraded lands are less able to hold onto water, which can worsen flooding. They contribute to increased pollution and sedimentation in streams and rivers. A set of erosion tables allow people to simulate and compare the effects of water runoff with different types of soil (i.e. spongy vs. hard), at different rates and volumes of water flow (slow steady rain vs monsoon storm), at different

angles of descent (mountain slopes) and with varying types of channels (washes). People can compare their erosion scenarios with real views of bajadas, washes, and city floods; and see how conditions in the distant mountains and forests impact life in the valley.

"Fire is Always About Water"

Traditional ecological knowledge teaches us that you need fire to bring back the water. Cultural burns (or "controlled burns") have been used for generations to thin out forests. You need to be able to see through the trees, to see through the forest to the next world. It is a concept of openness that is both spiritual and physical. Less dense forests allow water to seep more easily into the ground. They also help hold off the natural succession of meadows to forest and support greater biodiversity.

Under normal circumstances, fire is a common occurrence in dry areas. Mature trees would survive the blaze, but young trees and ground cover would burn quickly,

Mountains: Source & Inspiration

recycling their nutrients back into the soil. Working in tandem, these disturbances keep the forest young and healthy. Forests that are overgrown (due to forest management policies of fire suppression) and dehydrated (due to climate change) are susceptible to uncontrollable fires. When an overgrown forest burns, it sends debris and ash downstream, decreasing the overall water quality.

Forests of the American West account for 20%-40% of total U.S. carbon sequestration. In the last decade, more than a quarter of the forests in Salt River Project's watershed have been destroyed by fire. If present trends continue, these forests may become a source of increased atmospheric carbon dioxide rather than a carbon sink.

The Nature Conservancy will provide people with the opportunity to have a 360° virtual reality experience of the forest and learn about fire and restoring forest health.

What is Your Watershed?

People can enter their home city into the interactive Global Forest Watch Water map to identify and see the current risks to their watershed. The disappearance of rivers like the Gila is due to watershed damage from generations of beaver trapping (beaver dams slowed the flow of water), mining and deforestation, livestock overgrazing and floods and ecological damage. As of 2004, 35% of Arizona's natural perennial rivers had been altered or lost. We stand to lose at least seven rivers in our lifetime. Since the watershed is often far away from our cities, this essential component of living in the desert is easily forgotten.

Mountains: Source & Inspiration

[The soil] is the most vital place on Earth for human existence.

E.O. Wilson

Soil: What is below

Continuing down along the mountain, people exit outdoor to a 12-foot tall, sloped planter installation. As people walk around the downward sloping planter, they can explore a cross-section of the desert floor, and discover how the flora and fauna of these drylands take advantage of spaces below the surface.

Magnification Room

People enter a small room under the desert floor, and discover that they are now even smaller than a harvester ant. Everything here is scaled up, and they can now see the microscopic world of organisms that support all life in the desert. A digital sandbox of the desert floor invites tactile play. As people disturb the “soil,” a system of projectors and sensors expose the tiny life forms—from lichens to cyanobacteria. A digital clock counts down the time it takes for soil crust, desert pavement, and rock varnish to form.

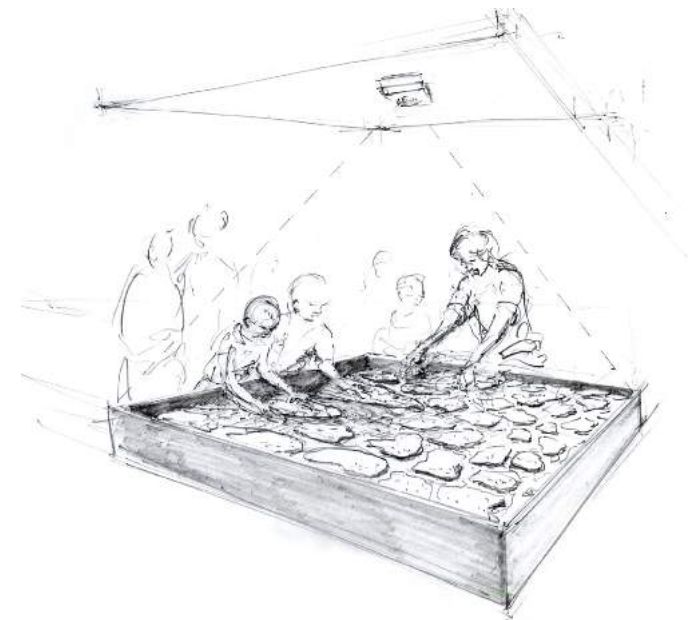
Soil Crust

Plant life in the desert (and therefore life up the food chain) depends on the tiniest of organisms to create the conditions they need for growth in this hot, arid land. Cyanobacteria (one of the oldest known life forms), algae, lichen, mosses and liverworts form communities of living crusts on desert soils. They protect and contribute nutrients and organic matter to desert soils, improve native plant health, and block invasive species. Soil crust is key in reducing erosion, increasing water retention, and increasing soil fertility.

Although they are so very small, their communities can be seen by its dark color on the soil surface. While they have no roots to absorb water and cannot regulate their temperature in the extreme heat, they have developed their own “sunscreen” to withstand the sun’s damaging rays. They are tough against temperature extremes and ultraviolet radiation, and have even survived nuclear tests in the desert; however, they cannot survive the compression of a hiker’s boot.

Desert Pavement

As the term ‘pavement’ implies, desert pavement is a stretch of desert that is paved and flat like street pavement, seemingly man-made. Pavement is found in the driest parts of the Sonoran Desert, and samples have been dated from thousands to tens of thousands



Mountains: Source & Inspiration

of years old. Pavement formation is such an exceedingly slow-forming process that researchers can only come up with theories on how it develops. Desert life benefits from its ability to sequester nutrients and moisture and to become the habitat for microbes and plants. Compression from human activity such as driving is likely to cause permanent damage, since their extremely slow formation makes recovery improbable.

Rock Varnish

Rock varnish gives desert pavement its dark complexion. Its color and sheen are the respiratory byproduct of microbe colonies, which protects the microbes from damaging solar radiation. Varnish forms very slowly. If rock surfaces resist weathering, varnish coatings can become increasingly thick and dark with time, and provide geologists with a tool dating alluvial fan deposits. In some cases, they may have been accumulating for many tens of thousands to over 100,000 years.

Geoglyphs and Petroglyphs

A “zoom-out” monitor tells the story of how ancient inhabitants of the Sonoran Desert used varnished, desert pavements as canvases for gigantic artwork. By removing the dark varnished stones and exposing the underlying light-colored soil, they created fantastic images of human figures, animals, and abstract forms. The largest one yet discovered is a human figure nearly the length of a football field, about seventy-five miles west of Phoenix. Similarly, petroglyphs on boulders were created by chipping away the surface of the dark varnish to expose the lighter-colored rock beneath. A visual storytelling can begin with a close up of desert pavement and end with aerial images of these large-scale pieces of art. Locations will not be revealed as they are kept secret for their protection.

Plant Strategies

Unlike in other biomes, where plants compete for light, plants in the desert compete for water. Here people can see and appreciate a plant’s entire morphology—from root tip

to spiny needle. The structure of the planter also helps present how elevation and north-south orientation supports different types of vegetative communities, depending on their adaptations to the cold, stress tolerance and growth strategies. People see that the desert’s extreme environment has produced a diverse portfolio of solutions: from extensive shallow roots to deep tap roots, from dormancy to fast life-cycles, from drought evasion to drought resistance, and the role of nurse plants.

The planter will feature iconic desert plants such as: creosote, cacti, mesquite, jumping cholla, foothill palo verde, ocotillo, limberbush, jojoba, and desert globemallow. The interpretative approach is a combination of the informational, anecdotal, artistic, and whimsical—helpful hints and local knowledge are offered amongst the many ways in which desert flora contribute to the ecosystem (eg. “Place a comb between you and the cholla branch to help release a prickly hitchhiker;” or “If you get lost, look for barrel cactus, they tend to always lean south.”)

Mountains: Source & Inspiration

Plant-Speak

There is some evidence that plants “speak” to each other through chemical signaling via their root systems. Research experiments have shown that unstressed plants were able to receive and pass on information through their roots from nearby drought-exposed plants. In response to these signals, the unstressed plants closed their stomata in preparation for possible exposure to future stress.

As humans change the environment, how will plants adapt to cope with the stress of change? While vegetative communities may move up in elevation in response to warmer and drier conditions, human interventions (eg. fire, livestock grazing, introduction of exotic plants) can often determine the kind of plants that ultimately take root.

Burrowing Down

Among the network of plant roots are displays of seeds stored by animals, burrows, and live insects. The desert underground is used by desert animals for nutritional sustenance,

shade and security. A “residential complex” of model burrows demonstrates the housing strategies of desert animals such as: the tarantula (silk-lined), kangaroo rat (multiple exits), desert tortoise (opening does not face the summer sun), woodrat (cholla-protected middens, inhabited over many generations), and harvester ant (nest of tunnels and galleries). (Any representation of mammals will be done as media or “evidence” of their presence.)

Minerals and Mining

This area’s geological history made it mineral-rich. As mountains pushed up and volcanoes erupted, igneous rock rose up and brought their veins of rich mineral deposits with them. For over a hundred years, people have burrowed into the earth in search of these minerals: copper, silver, and gold. Mining is one of the most land-intensive industries. Thousands of miles of shafts and tunnels were excavated, hillsides denuded, streams diverted, water tables polluted and vegetation communities irrevocably changed. From

minute soil nematodes to people, a complex web of producers, prey, and predators affect the non-living components of the desert ecosystem.

Mountains: Source & Inspiration



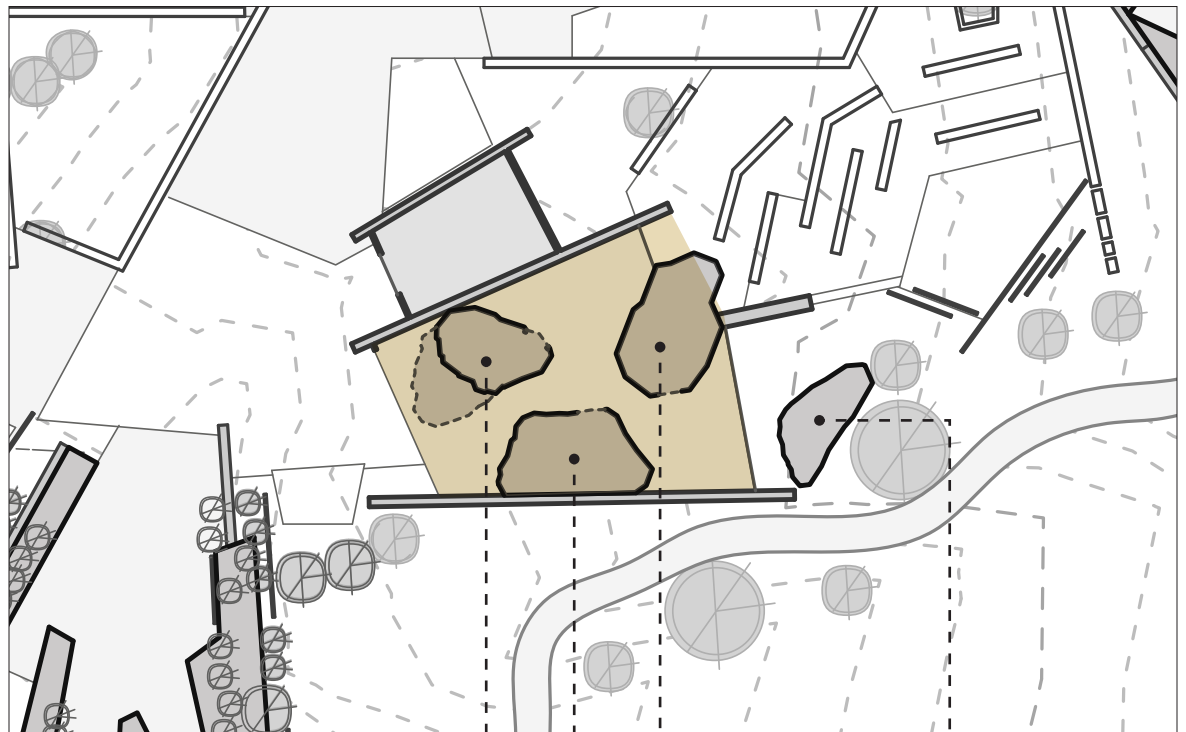
Tom's Thumb: Deep Time



*Desert having been ocean
Remembers water, misses it,
Hugs it and kisses it when it visits,
Steals a little when it tries to leave,
Prickly pear and ocotillo and mesquite
A little fatter, a little wider, a little greener,
These plants having been coral and puffer fish
And green seaweed in their ocean lives.
In this place now, one can still see
This place **then**,
Every grain of sand once having been
A point of light in the crest of a wave.*

From "The Thirst of Things"
by Alberto Rios

Tom's Thumb: Deep Time



Proterozoic (1,800-542 mya)
Paleozoic (541-252 mya)

Cenozoic
(66 mya-today)

Mesozoic
(252-66 mya)

Views from the
Anthropocene

Tom's Thumb: Deep Time

What is this place?

It took eons to create this landscape—the physical remains of shallow seas, desert dunes and lava flows. Almost every rock type and geologic age can be found in Arizona, especially in the Basin and Range Province. The iconic rock formations that define this northeastern area of the McDowell Sonoran Preserve are composed of 1.4 billion year old coarse-grained granite that weathers readily into unusual, spheroidal shapes. Tom's Thumb, the landmark granite spire that rises in the distance, began as magma beneath the earth's surface that pushed up and transformed into granite. Exposed to the elements, it was dramatically rounded by erosion. The majority of the McDowell Mountains are composed of erosion resistant quartzite, meta-volcanic rock formed about 1.7 billion years ago. Roughly one-third of the mountain slopes here are exposed bedrock, and the rest are thin soil over bedrock. This soil retains limited amounts of water, and large rainfalls rapidly carve out local drainage channels.

Over in the nearby Superstition Mountains, we see geologically young (15 - 25 million years old) volcanic deposits.

What don't we see?

Continents drift, collide and re-form. Rivers and oceans appear and disappear. Land masses, oceans, the climate, our atmosphere, and all life have co-evolved on this planet in a complex, interwoven web. As climates and habitats change, plants and animals adapt, migrate or become extinct.

What can we learn from living in the desert?

This land's deep history challenges our notion of permanence. These geological forces helped create a tremendous array of topography and environments—a wide range of lifezones that support a remarkable diversity of organisms. By zooming out in time, we can get a better perspective on these ecological relationships. For example, recent arrivals are often perceived as invasive and non-native species, but the vegetation we think of as

“native” to this desert actually migrated here from the sub-tropics 10,000 years ago. From this perspective, everything is “non-native.” Geological, biological, and anthropological evolution are continuous processes. While change isn't inherently “good” or “bad”, it can impact specific species—or whole communities—negatively or positively.

What future do we want to create?

The planet's carbon and nitrogen cycles, ocean chemistry, and biodiversity are products of millions of years of slow evolution. However, human activities have started to have a significant global impact on earth's geology and ecosystems. Our activities (eg. population growth, the creation and use of plastics, etc.) have become geological forces as significant as deep-time processes. How can we take responsibility and action for the future of the planet and its inhabitants?

Tom's Thumb: Deep Time

Sometimes the one still point in the center of the landscape is moving

"Desert Tortoise" by Wendy Burk

Interpretive Experiences

A Sea That Became a Desert

The space is inhabited by a rockscape of the McDowell Sonoran Preserve. Three 20 foot-tall "rock" formations line a winding path and frame a view of Tom's Thumb and the McDowell Mountain Range. The trail is transformed by augmented reality, guiding people through deep time from the Proterozoic to the Paleozoic, Mesozoic and Cenozoic Eras: using a handheld tablet, people first experience the land rising around them, shallow seas washing over them, then the gradual lowering of water levels until they reach dry land. The first sounds heard on earth, such as the effect of wind in trees or grasses, waves at the ocean or lakeshore, or movement of the earth can be heard. Real fossils and/or artifacts mark the transition of geological periods in protective cases, and people will have opportunities to handle rock samples.

People enter "time boulders" along the way. The interiors are inviting and qualitatively different from the rocks on the exterior

trail. Inside, people unlock an animated story of geological events when they touch the rock strata of a particular period; and help bring the space to life by contributing their own era-specific fossil rubbings/drawings to the organisms living in the space. People first encounter the Proterozoic Eon (1,800-542 mya) when then rocks in this area were formed and single-cell / simple multicellular organisms emerged; and the Paleozoic Era (541-252 mya) when Arizona was covered by a shallow sea.

On the rock walls people touch and examine fossils and replicas of organisms that inhabited this watery environment: trilobites, brachiopods, primitive fish, coastal plant life, and what was once the most diverse population of sharks in the world. As people enter the Mesozoic Era (252-66 mya), geological forces elevate the topography of Arizona's southwestern region and the water level lowers as club mosses, ferns, dinosaurs, and marine reptiles appear.

Tom's Thumb: Deep Time

In the final boulder, people enter the Cenozoic Era (66 mya-today) to witness the sea's departure from this part of the world. Between 20 and 40 million years ago, numerous volcanoes were active in the Sonoran Desert. The tectonic activity, coupled with intense heat from below, placed tremendous stress on the crusts underlying the Sonoran Desert, causing the horizontal and vertical movements that produced its characteristic Basin and Range topography. This steep topographic relief creates relatively cool and moist summits containing lifezones more characteristic of Canada than those of the valley bottoms below. We are now in the age of mammals and birds. Camels, horses, mastodons, and rodents roam this dry terrain amongst a wide variety of habitats; and most recently, humans arrive, leaving their dart points on the land.

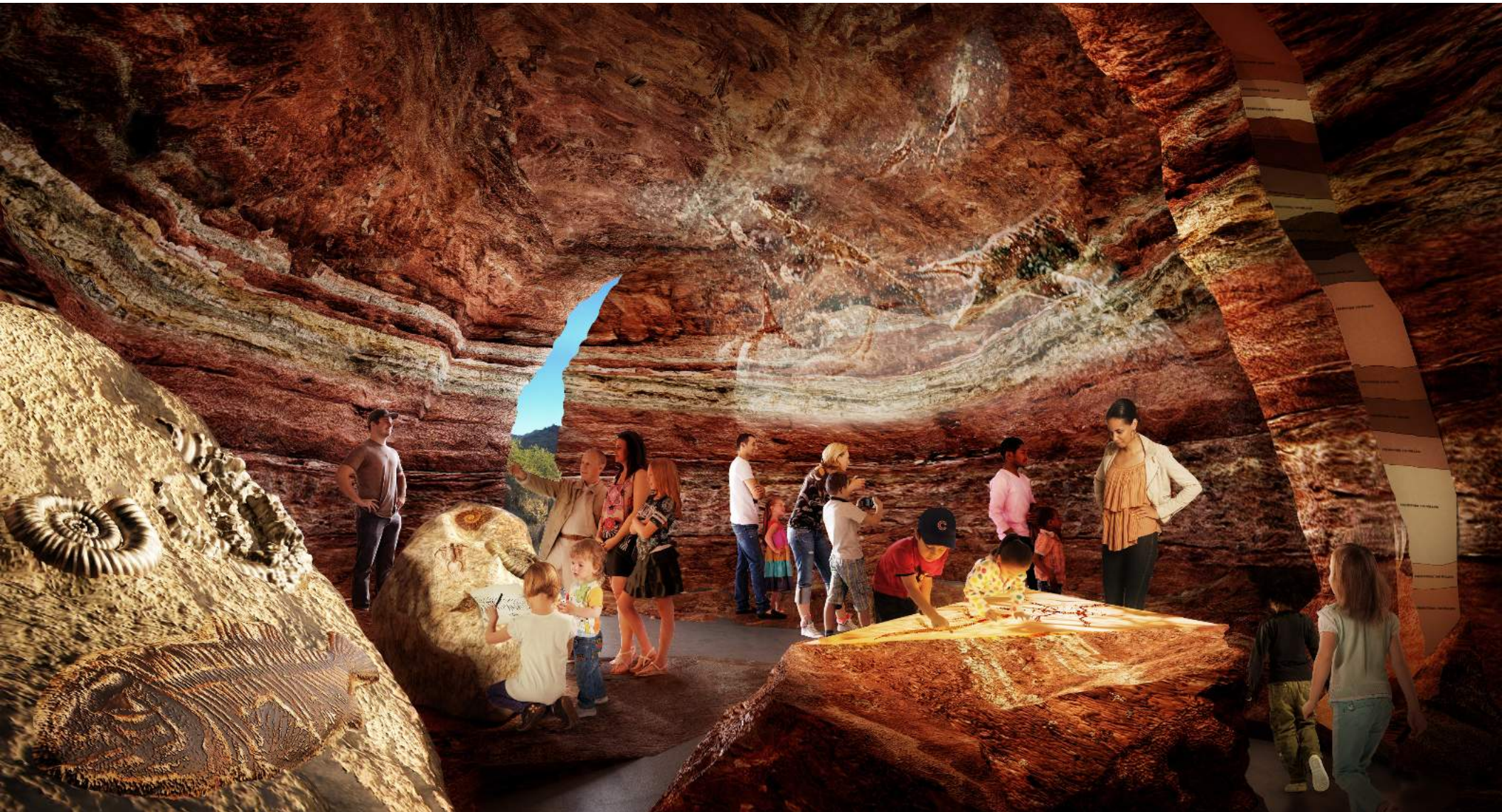
Views from the Anthropocene

Viewfinders at the end of the time trail offer a series of interpretations of the Sonoran Desert in the far future. What kind of pressures are our deserts (and their communities) under in the Anthropocene?

This landscape has changed before, and will likely change again. Based on various possible environmental, technological and cultural scenarios, artists (eg. writers, visual artists, composers, etc.) create a series of future visions for the desert. The visions address: our hopes for life in the Sonoran Desert moving forward; how we might create a future where people and nature thrive together; the key challenges that are connected to nature and people.



Tom's Thumb: Deep Time



Tom's Thumb: Deep Time



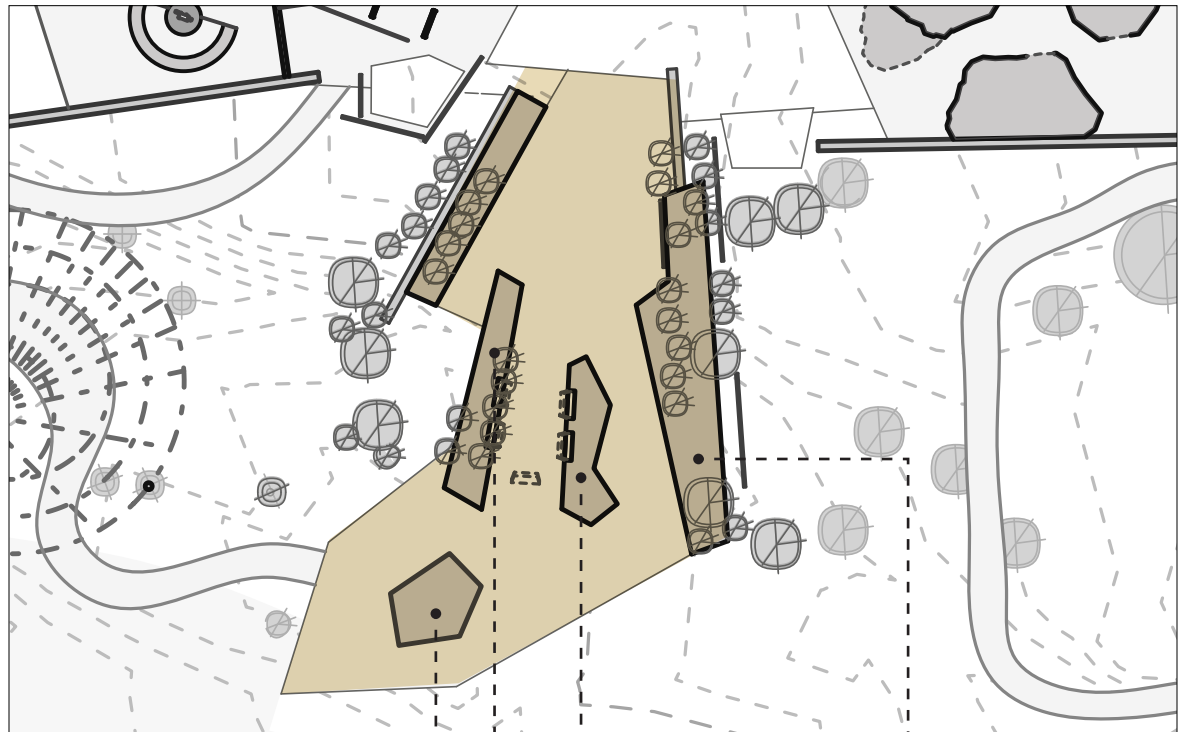
The Wash: Water in the Desert



*The Sonoran Desert is a place
“where plants exist between
hell and high water.”*

Frank Lloyd Wright

The Wash: Water in The Desert



After the Rains
Stormwater Map
Ephemeral Pool
Create Your Desert Avatar
Living Animal Enclosures

Flood!

Dry Wash

Night Watch

The Wash: Water in The Desert

What is this place?

Looking out, we know that water once flowed here... again and again, perhaps even thousands of years ago... to create this vital wash habitat. We see signs of water everywhere in the landforms and life forms that live here. From the highest point in the desert, water finds the path of least resistance and erodes the rock away to create channels down to the basin. In the desert, water continues along easy paths in the landscape, creating capillaries that carry water and nutrients to the desert's inhabitants.

What don't we see?

Drought. Flood. Drought for many months again. Flood. This is the rhythm of the desert. Every living thing needs water to live, and washes bring it to them. During the wet, rainy season, you might witness a feast of water finding its path from the mountains. During dry times, the "stream" is a lush, deep-rooted green impression. It's different here from the sparsely-vegetated desert floor. Cool air comes off the mountains and sits along the

wash; and its vegetation-lined banks create a travel corridor and a nutrient-rich home for opportunistic animals.

What can we learn from living in the desert?

Part of living in the desert is letting the washes and desert systems do their work. In the arid West, desert wash habitats are important to wildlife populations and the establishment of plant communities. Nothing may happen for years, then with a major flood event, a large cohort of plant species is started. Once they get through the first critical year or two, many species can tolerate severe drought, waiting quietly until it rains again to grow or set seed. Washes generally support higher structural plant diversity and this habitat richness supports a greater diversity and density of wildlife than other desert scrub habitats. Wash habitats are particularly important to birdlife, providing food, cover, perches and nesting sites. Where there is water, there is life.

What future do we want to create?

Frank Lloyd Wright described the Sonoran Desert as a place "where plants exist between hell and high water." Desert species know how to live in a land of diametrically opposed conditions: drought and flood. They know to wait, to hold onto the rain that does fall, and to take advantage of the opportunities that arise. Our future in the desert will depend on how well we can apply these lessons to our own communities. Years ago, people anticipated the seasonal rains and strategically diverted runoff to irrigate crops in the desert (ie. flash cropping). Today's massive water management systems are not divorced from these natural desert systems either, channeling storm water to the washes and rivers. Along the way, our pollutants and trash are carried into these vital habitats, and pumped back into underground aquifers.

The Wash: Water in The Desert

Interpretive Experiences

People who live in the desert generally follow crepuscular rhythms, especially in the summer. A walk in the desert is best at the end of the day right before the sun sets or just as the sun rises. The Wash takes people through a drought/rainy season experience, populated with live animal enclosures, and culminates in a walk through a real wash on overlook platforms.

Dry Wash

People enter the wash during the dry season. The wash banks contain seeds that seem to glow in the soil. They are waiting for the moisture and temperature to be just right. Many desert plants and animals do not necessarily attempt to reproduce every year, but they wait until sufficient rain has fallen to make the investment of energy worthwhile. Until then, they may lie dormant in the ground for many years. In the Wash pavilion people can discover some of these animals hidden in the crevasses, burrows and nests below ground.

Night Watch

The light is dim and the surroundings convey the wash at night...but this place is very much alive. Flowers glow with an incandescent color. Sundown brings relief from the desert heat, and nocturnal creatures emerge from their hiding places in search of food and water. People pick up a clue card that describes the wildlife that animates the desert from dusk to night. As

one McDowell Mountain Regional Park tour guide warns, "Everything in the Sonoran Desert either sticks, stings, bites or eats meat. There are quite a few things you don't want to touch, and in the dark it's harder to discern between safe and scary."

Upon entering the night nook, Audio Spotlight directional speakers bring the room to life with the distinctive sounds of nocturnal life. Can you guess who is here? Perhaps it is a rattlesnake making its way across the path; a gila monster hunting for prey; bats heading for the nectar of saguaro flowers; cactus pygmy owls or nighthawks calling from their perches; a mother bobcat walking through the vegetation with her kittens; or a javelina foraging for prickly pear fruits and roots. The audio track alternates between audio alone and audio with the sources of the sound revealed—sculptures "invisible" before light up in synchrony with the sound clues. Stations allow people to "see" like a bat (echolocation) or like a snake (infrared detection).

The Wash: Water in The Desert

He had waited until the flowing washes slowed to a trickle before venturing out... Because creosote and other plants released their pungent scents in the air after a rain, the smell of his dry coat would be negligible.

From *B'añ Ce:gig Ban—My Name is Coyote*
by Angelo Jaoquin, Jr.

Flood!

From the nighttime wash, people approach a video “tunnel” and hear the distant sound of a flash flood (much like the sound of rolling thunder). Despite low annual average rainfall, intense localized storms can drop a year’s worth of precipitation within a few minutes. Sheets of water wash across the land, filling washes and riverbeds in minutes, the flow carries along sand, rocks, nutrients, and plants, carving new stream channels and eroding stream banks.

People are warned on the dangers of going into a wash during a rainstorm—a thunderstorm can create a flash flood very quickly and carry away everything in its path. Generations of people have learned to respect its power and live with periodic floods. A high-definition, time-lapse video of a gradually growing stream appears on both sides of a tunnel-like space. People experience a ferocious, fast-moving wall of water rushing through the wash after a monsoon. Visuals

continue onto the floor, and react to people’s locations to create a feeling of actually standing in the flood. As major flows often reach the desert at nightfall, it is an event most people will never experience in real life.

After Rain

What happens after the rains? There are many signs of life people can learn to identify in the wash: dens, tracks, songs, etc. When monsoon water comes rushing down, little nooks and crannies are created in the walls of the wash. Here, animals like bobcats, coyotes, packrats, mice, and javelinas can dig farther into the soft soil to create caves and dens. For most of the year, Ironwood trees are a metallic gray with grayish leaves, but in spring, after soaking in the winter rains, they display cloaks of tiny purple flowers. Even after its death, remnants of the Ironwood tree can remain standing for a thousand years. Trees along washes provide food, or perches and homes for birds, who fill the air with their songs. From large-scale zoetropes that reveal the activities that created

the holes and animal tracks in the banks, Pima stories like that of the hummingbird who brought rain back to the people, to actual footage of secret watering holes in the Preserve, to ambient songbird audiotracks and “Who is singing now?” ID stations, the wash comes alive.

The wash is not only a home, but a corridor for traveling wildlife—a likely reason why, over a thousand years ago, the Huhugam used these washes as paths; and after a flood relics of human presence may be found in these passageways—Huhugam pottery shards, dart points, and petroglyphs. The locations of these petroglyphs are kept secret for their protection. They are rooted in places held sacred by the Huhugam, and connect our current and future generations to the spirit of this desert home. What kind of artifacts from the city are collecting in today’s desert washes?

The Wash: Water in The Desert

Water Finds a Way: Stormwater Map

Stormwater flows over the desert and either seeps into the ground or is channeled into small washes, eventually emptying into the rivers. In natural desert areas, stormwater follows these natural watercourses. However, cities were built over desert's natural drainageways, using systems of gutters, streets, and networks of underground storm drains, culverts, and washes to channel untreated rainwater into rivers, washes, and basins. Otherwise, our cities would experience serious flooding with almost every rainfall.

Posing the question, "Where does your stormwater go?" the map shows how the desert's major drainageways (washes, rivers, etc.) are connected to the stormwater management system of the cities of Scottsdale and Phoenix. People learn how cities attempt to do the work of natural drainage systems. They all ultimately conduct stormwater to the Salt, Agua Fria, and Gila Rivers. This water is not sent to a treatment plant, so all the pollutants and debris from our streets and storm drains go directly to our washes and

rivers. How do city pollutants affect wildlife dependent on temporary pools of storm water?

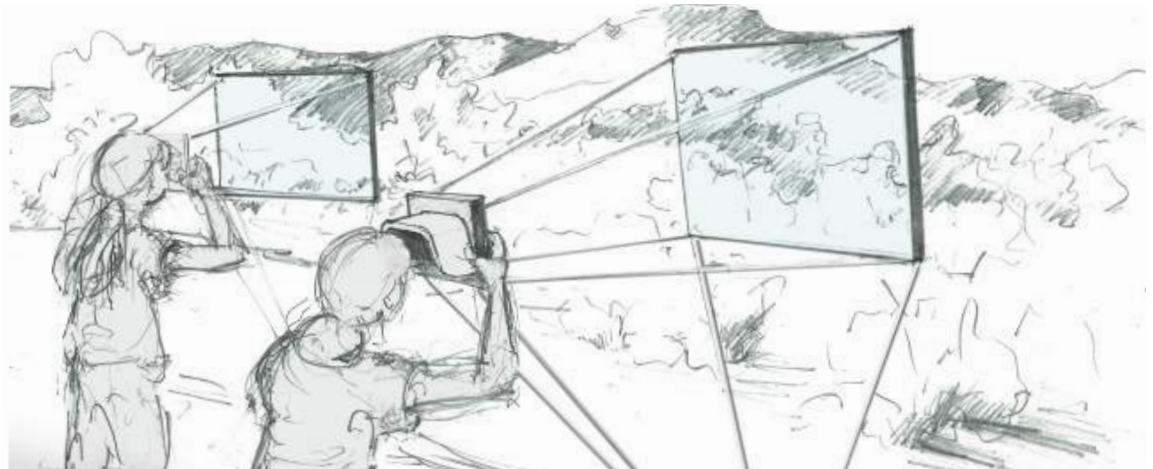
Time Windows

Time Windows offer time-lapse views of the Preserve over a 24-hour period, and over the course of a year. After the rains, the desert seems to wake up almost instantly. Time Windows looking out onto the wash capture this phenomenon through time-lapse video superimposed on the real view. The Sonoran

Desert's two rainy seasons, one from December-March and the other from July-September, are on full display within a few minutes.

Ephemeral Pool (Seasonal Rain Pond)

After the rains, ephemeral pools appear in places once arid and dry. In the desert, organisms must often wait, know how hold onto what rain does fall, and get down to business when opportunities do arise. Here, people have a chance to see these adaptive



The Wash: Water in The Desert

strategies at work. Fairy shrimp eggs can withstand long periods of desiccation and can remain as encased embryos—dehydrated and inactive in the dried mud of pools for years and sometimes decades. Spadefoot toads can spend weeks underground, coming to the surface at night time after a heavy rain so that they can feed. They do not automatically attempt to reproduce every year, but stay dormant underground until sufficient rain has fallen to make the investment of energy worthwhile.

Create Your Desert Avatar

In this digital game, people learn about the many unique adaptations of desert animals, and create their own desert avatar by combining traits into a super desert creature. Users might choose: an external skeleton to reduce moisture loss (beetle), an expandable tail to store food reserves (Gila Monster), the ability to reabsorb water from one's own waste (Roadrunner), the power to lower one's body temperature (Turkey Vulture), the ability

to convert seeds into water (Kangaroo Rat), digestive systems that can process sharp objects like cactus spines (Jackrabbits), or the strength to dig extreme depths to escape the heat (Hairy Scorpion).

Users can compare how their avatar will fare in competitions against humans or other users' avatars in various desert challenges. At the end of the game, users can use their avatars as a personal profile, print out as paper cut-out/sticker or past on their social media accounts.

Live Animal Enclosures

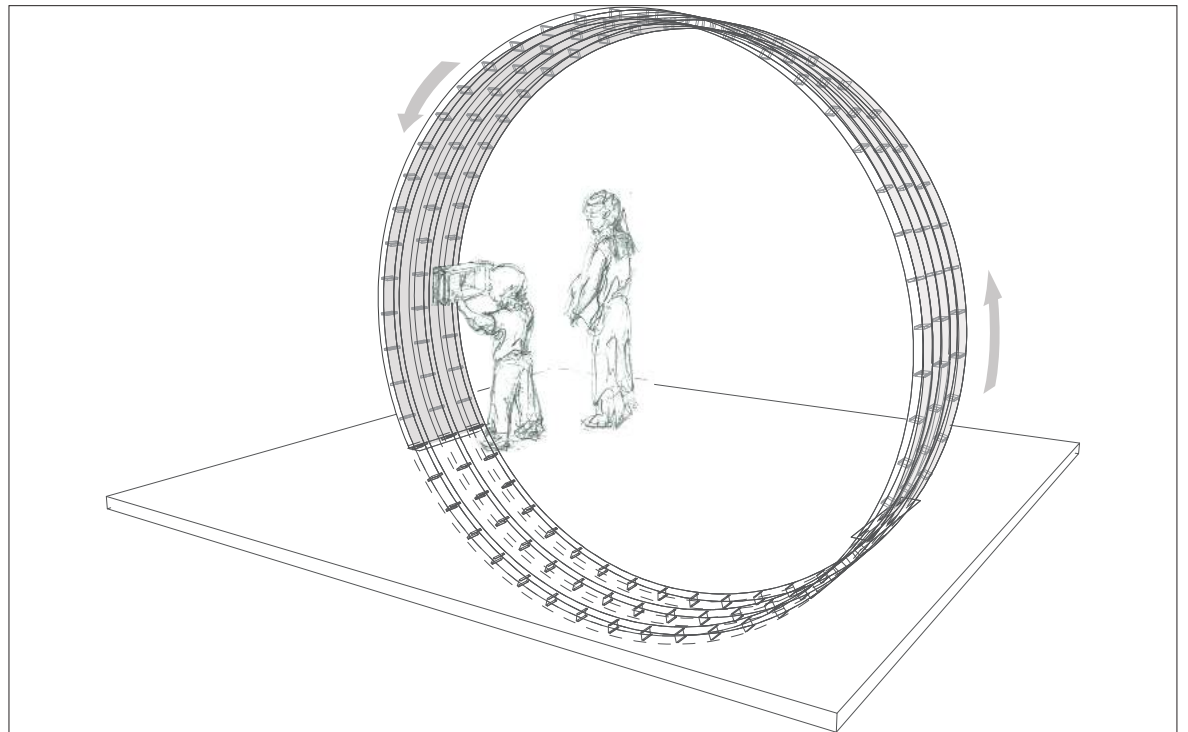
Collaborating with the Phoenix Herpetological Society, the Wash gives people an opportunity to observe desert reptiles, invertebrates and insects. Animal-friendly enclosures transition from indoor to outdoor spaces. Trained Scottsdale Community College students and guides answer people's questions about resident tortoises, snakes (Rattlesnakes, Kings, Red Racers), Gila monsters, lizards, scorpions, and tarantulas.

The Wash: Water in The Desert

Zoetropes



Three-dimensional zoetropes



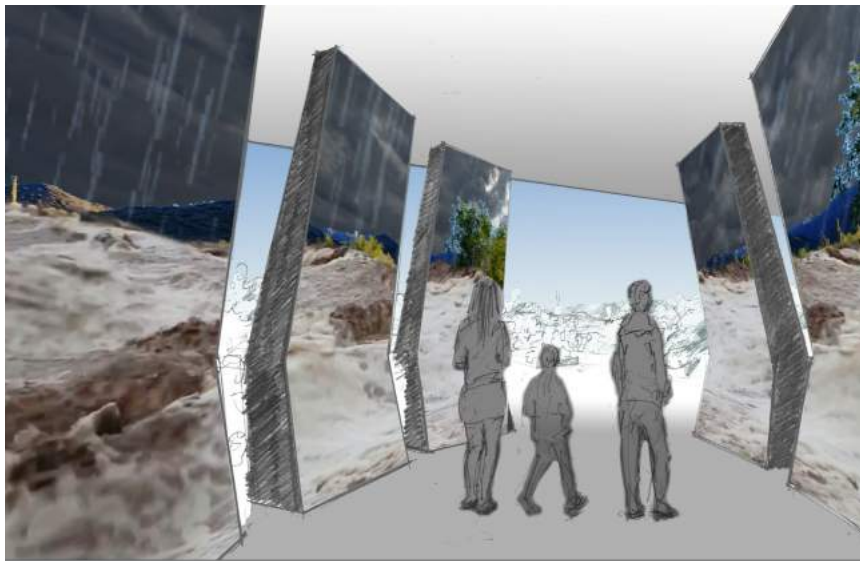
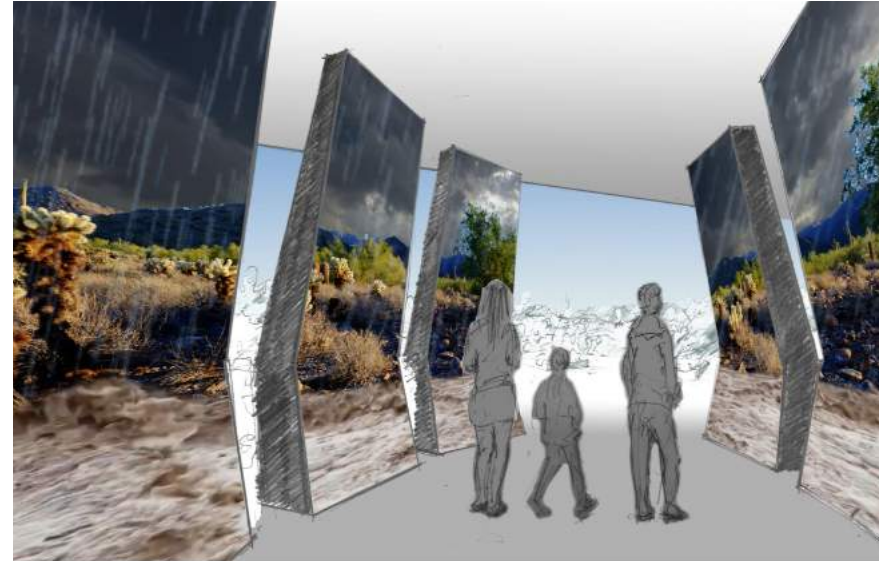
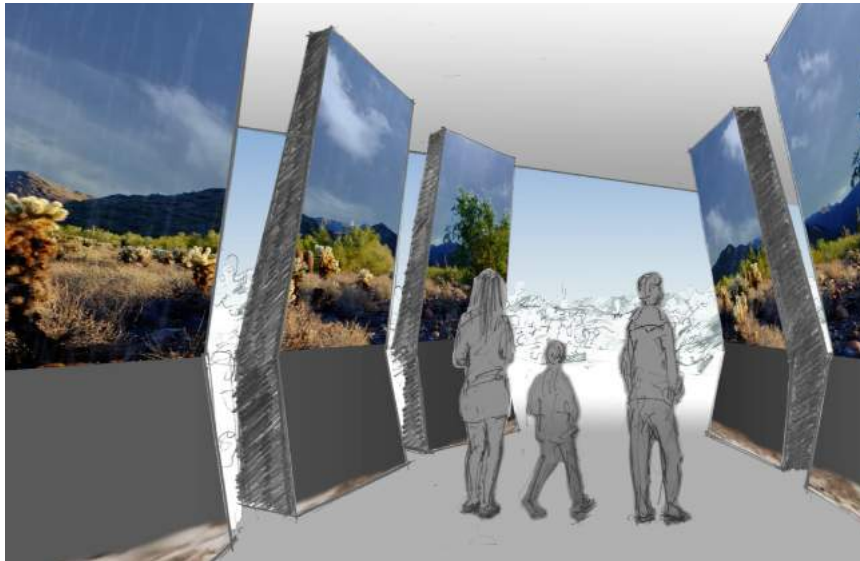
Large-scale, three-dimensional zoetropes animate slices of desert life.

The Wash: Water in The Desert Flood!

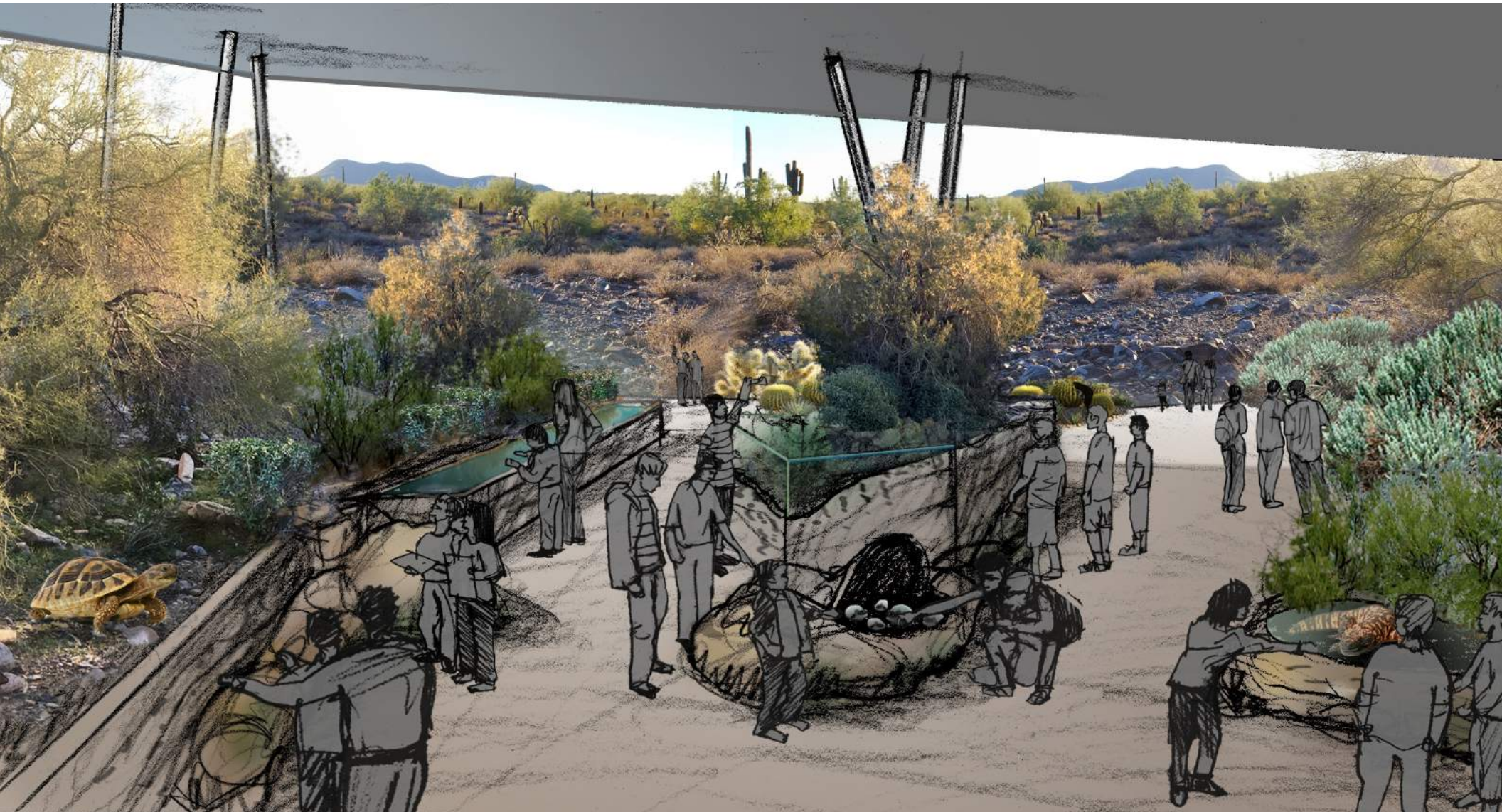


The Wash: Water in The Desert

Flood!



The Wash: Water in The Desert



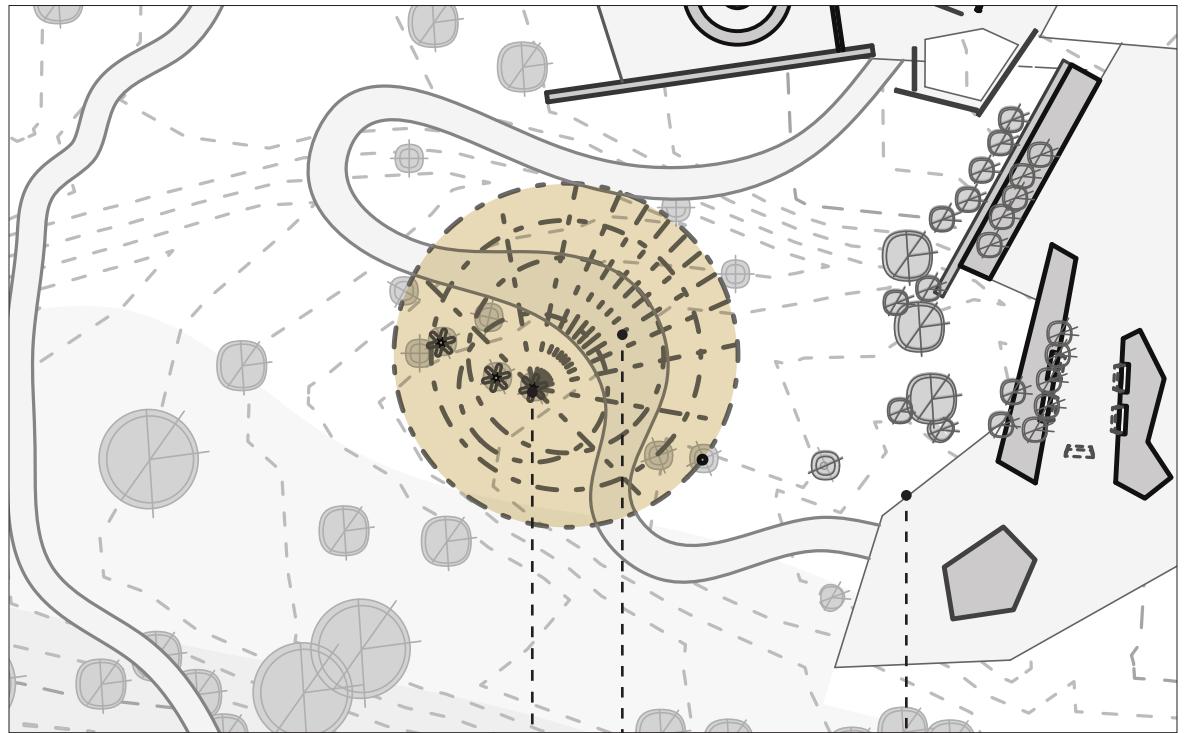
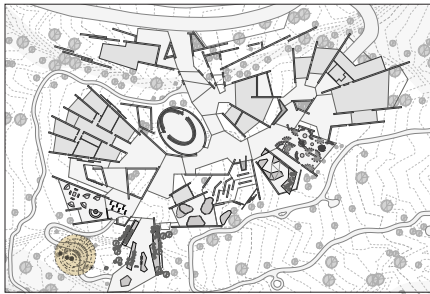
Saguaro Sundial



*If it takes you a hundred years
to grow your first arm
for how long do you feel
the sensation of
craving something new?*

From "Questions for a Saguaro"
by Alison Hawthorne Deming

Saguaro Sundial



Saguaro Sundial

Saguaro Outlook

Saguaro See and Touch Trail

Listen to a Saguaro
Saguaro Mysteries
Spirit of the Sonoran Desert

Saguaro Sundial

What is this place?

This is where the saguaros (*Carnegiea gigantea*) live. A 24-foot saguaro towers over this part of the Preserve—standing sentinel on this landscape for nearly a century, it may continue to do so for another hundred years. It is the view that most people associate with the American West, but these iconic plants grow only in the Sonoran Desert, within that frost-free zone between sea level and 4,000 feet (or higher on warm south facing slopes).

What don't we see?

The saguaro is a keystone species—a centerpiece of extended ecological connections. A single saguaro can provide sustenance, protection, shade, raw material to a host of organisms in its range: bacteria, insects, birds, bats, cold- and warm-blooded animals, and people. Its flowers open only at night, attracting nocturnal bats and early morning bird pollinators. (This behavior is shifting more towards day pollination, however, due to the higher bird population in the northern Sonoran Desert versus the

subtropics where the saguaro originated.) Its body hosts a variety of birds, who excavate nests inside its pulpy flesh. At times this flesh can provide water to thirsty animals, or food for bacteria. In death, the saguaro is an oasis for insects and other arthropods, providing food, moisture, and shade.

What can we learn from living in the desert?

In a harsh desert environment, it becomes clear how important adaptation and ecological connections are to the health of an ecosystem. In Arizona, saguaros are increasingly pollinated by birds rather than bats. One result of this is that the nocturnal saguaro flowers have begun to stay open into the morning hours, when birds are active. It is a dance between species that helps them thrive in this setting. By following one species' extensive connections we can see how the loss of one can have a ripple effect on other species and even the environment itself.

What future do we want to create?

The saguaro is not only an iconic symbol of the Sonoran Desert, but an elegant example of how intricately connected life is on earth. As we think about our future in the desert, and our connection to these landscapes, the saguaro is a reminder that change never occurs in isolation.

Saguaro Sundial

Interpretive Experiences

Saguaro Sundial

A walkway leads people to a stand of large saguaros within the Center footprint. As the path arcs around a particularly tall specimen, lines of declination are inlaid in the path surface, marking the hours from sunrise to sunset. Visitors are walking through a giant sundial, for which the saguaro acts as the gnomon. The installation is inspired by the Huhugam's sunwatch stations and their use of the sun's movements to measure time. While sundials mark hours in a day, sunwatch stations mark annual solstices—the sun would come up and cast a shadow, or illuminate a rock with light, to hit a mark when the solstices arrive. With both, people are witnessing the rotation of the earth.

Near the cactus is a structure of cutouts, precision-angled so that, at the appropriate time of day, a shadow appears in the shape of an animal interacting with the cactus: bats, wrens, tortoises, squirrels. In addition to the shadow image, hour lines are accompanied by a line of simple text describing the interaction. As people walk along the sundial, a narrative is composed that depicts “the life of a saguaro” and the many organisms that depend on it.

Stimulated by the fading sunlight, its flowers first open in the early evening. By midnight, they are fully open, attracting night-feeding bats and early morning bees. By noon, in the heavy heat of the day, the flowers close again. Owls sleep in their nests, and hawks

Saguaro Sundial



Saguaro Sundial

perch atop its tall limbs, scanning for prey. As saguaros fruit, people harvest them using long poles to knock them down from their tall perches to make wine, jelly and candy; while animals like the iguana and kit fox wait patiently for them to fall to the ground. Each fruit contains about 2,000 tiny black seeds. Often looking for respite from the heat, foragers might find shade under the branches of a desert tree. Their droppings deposit the next generation of seeds exactly where they need to be—under a nurse plant. As the saguaro continues to grow, its much older nurse tree may die.

Many sundials bear a motto to reflect the sentiments of its maker (eg. “Time brings all things”). The Center may consider having a motto contest that reflects life in the McDowell Sonoran Preserve.

Saguaro Lookout

An elevated lookout point gives people a rare opportunity to “rise up” and look at a mature saguaro at the crown level.

Saguaro See and Touch Trail

As people reach the end of the sundial, the walkway u-turns, and the second path looks at why this plant is so resilient here, and why it has become synonymous with the American desert and desert living. Outdoor-friendly interpretive stations and interactives allow people to touch both real items and reproductions. Topics of exploration: Morphology - eg. a cross-section of the saguaro’s pulpy body, expandable vertical ribs, waxy skin and downward pointing spines, extensive but shallow root system, callous scar tissue.

Morphology: eg. a cross-section of the saguaro’s pulpy body, expandable vertical ribs, waxy skin and downward pointing spines, extensive but shallow root system, callous scar tissue;

Growth rate: from 1 to 1.5 inches in the first eight years, to flower-production at 35 years, the appearance of branches at 50 to 70 years, and arms at around 100 years. At 125 years, a saguaro is generally considered an adult.

Reproduction: from flower to fruit to seeds. In late April through early June, the tops of the saguaro’s trunk and arms sprout large white flowers. To develop into fruits, the flowers must be pollinated when they open at night and before they close the following noon. While a saguaro can produce some 40 million seeds during its lifetime, only a few will survive to become a seedling and grow into adulthood.

Spirit of the Sonoran Desert

How a native plant sustains the spirit of people living in the desert:

Marking history in the desert: This plant—which only grows in the Sonoran Desert and can live up to 200 years—was chosen to hold the history of the Akimel O’odham (“River People”). They annotated oral histories by using an Oos:hikbina (O’odham for “stick cuts upon”), also known as a “calendar/talking stick”, made from a dried rib of the saguaro. The recorder and keeper of the Oos:hikbina etched dots, small notches, V-shaped cuts, and deep straight lines across the stick to

Saguaro Sundial

represent years, and symbols were often painted with natural pigments of blue soot and red clay to document historical events. [This story/display is fully contingent on approval by members of the Salt River Pima-Maricopa Indian Community.]

Building in the desert: The strong, woody ribs of the saguaro were used to construct homes of the Huhugam; tools, fences, splints.

Breaking bread in the desert: Foods made from the saguaro bring people together as family and community: ceremonial wine, jelly, and candies from the fruit; cakes, oil, and a peanut-butter like paste from its seeds.

Connection to the desert: The saguaro has become a symbol of this place in the literary and visual arts, ritual, and music. Viewscopes point towards various points around the Preserve, and are connected by a digital code to a selection of music, poetry or personal memories.

Listen to a Saguaro

Using acoustic sensors, people can listen to the internal movement of air through a saguaro. Pores open to capture carbon dioxide, and in so doing lose water. Roots take up water from the ground, which goes up through a series of tubes (the xylem). Pit membranes (two-way valves) connect these thousands of tiny tubes. The drier the soil, the more tension builds up in the xylem until an air bubble is pulled in through the membrane and creates a popping sound. For some plants, these embolisms are deadly (as with human blood vessels) because the gas bubbles interrupt the flow of water. Plant hydraulics might be the piece of the puzzle that tells us which species are going to live and which are going to die with climate change.

Saguaro Mysteries

People are introduced to the current mystery of how saguaros carry out photosynthesis when they have lost multiple genes connected to photosynthesis. ASU scientists are exploring this very question.

Saguaro Sundial



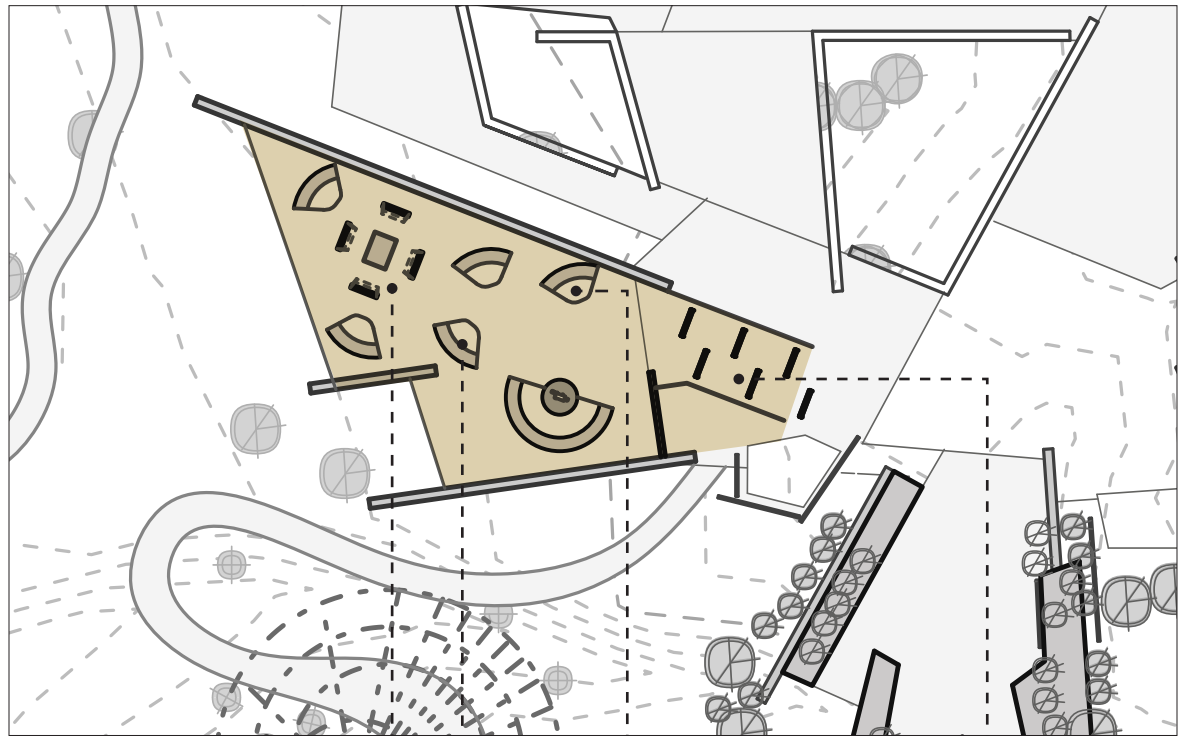
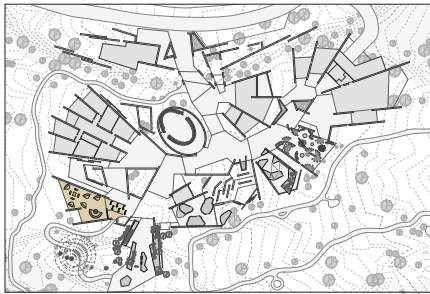
City: On “The Edge”



*Having barely escaped death today
you cannot judge too harshly
the opportunistic forager
seizing warblers from feeders and nests
traveling downhill or in danger flying
a few seconds as a bronze gloss
you must be prudent if one races
slow motion in front of your moving car
only to dart into brush
for the next thing you know
the lamp is lit and the eyeglasses await
the roadrunner as the reader*

From "The Roadrunner"
by Jane Miller

City: On “The Edge”



A View to the Future
Tomorrow Block by Block
Desert Cities Around the World
Global Conversations
Biomimicry Station

Oasis

A Changing Landscape
Huhugham Canals
In One Generation

The Edge

City: On “The Edge”

What is this place?

Sometimes the city “edge” feels like a line in the sand—a perimeter around the oasis we built. Like all life in the desert, we seek refuge from the heat and relief from our thirst. From the first people who reclaimed the desert, we learned to channel the rivers and irrigate our fields. Within this hot, arid environment, we found its green, riparian edges. When that began to run out, we dug into the ground to find ancient water sources, and when we feared that would not last, we recycled it. We are a city in the desert, a community of over a million, but perhaps the city’s edges aren’t the hard borders we think they are. The city is, in fact, in the desert and the desert is in the city.

What don’t we see?

The Valley has expanded its footprint in the desert quickly—from 17 square miles in the mid-1950s to 517.9 square miles today—to become one of the largest urban settlements in the United States. Although man-made, it is a habitat within the Sonoran Desert ecosystem, and as such, shares a stake in the Desert’s

ecological future. Drawn to this valley’s beautiful but often hostile setting, people turned to technology to create a more livable environment. Canals, dams, and hydraulic pumps allow us to access water when and where we need it. Air-conditioning helps us cope with the extreme heat. Cars and paved streets permit us to travel great distances comfortably. With each innovation, “the desert” and its ecological systems seem farther and farther away... but they are all right here and so are our footprints on them: heat, water-scarcity, pollution, invasive species, as well as stewardship.

What can we learn from living in the desert?

Desert flora and fauna have successfully evolved with the Sonoran Desert over thousands of years. The combination of heat, aridity, seasonality, and geology unique to this place has given rise to a slowly evolving, dynamic, equilibrium, based on specialized biological adaptations and symbiotic relationships. People migrated here much

later than their non-human desert neighbors, and as they did they found remarkable ways to adapt to the harsh environment. Through observation, ecological knowledge, and cultural innovation, generations of people have found ways to live with the desert overtime. Technological advances enabled us to not only live with the land but to change it, and test the boundaries of what is possible in the desert... before it becomes something other than the desert that drew us here. Has the optical illusion of the city’s hard edges begun to weaken? Do we feel the desert in the city yet?

What future do we want to create?

When asked for his thoughts on sacred places in the desert, Shane Anton of the Salt River Pima-Maricopa Indian Community replied, “Anything of cultural significance

City: On “The Edge”

begins with the people; if it's important to them it is sacred." This may be equally true of a church in a small town or a mountain peak in the McDowells. The tomorrow we want to create must begin by asking, "What is important to us?" As we move forward to identify and address these needs in the 21st century, we are reminded of the history and ecology of this place, the interconnectedness of all things and the implications of our actions on the future. As the earth's climate becomes warmer and drier, much of the world will turn into desert. If we can learn how to live sustainably here, other parts of the world can benefit from our knowledge and learn to adapt to new conditions. While the word "Preserve" makes us think of the past—it may, in fact, hold our future.



*McDowell Sonoran Land Trust and the City of Scottsdale took thousands of people on hikes into what would become the Preserve in order to create awareness of what would be protected, and why.
Courtesy of Joan Fudala, 1995.*

City: On “The Edge”

One’s options in this world are as vast as the horizon.... Yet we must choose each step we take with utmost caution, for the footprints we leave behind are as important as the path we will follow.

From *Dance of the Chupacabras*
by Lori R. Lopez

Interpretive Experiences

People explore the idea of the city as desert habitat. It is hot and arid. It has microhabitats that support a diversity of lifeforms that are deeply inter-connected, channels that move water, and corridors for migrating wildlife. It adapts to changes and evolves over time. The City presents the tangible and intangible human footprint: made-made forms, shifting landscapes, and the meanings we’ve imparted on our past and future here.

The Edge

Often the city and the desert are spoken of as opposing conditions: developed vs. undeveloped, unprotected vs. protected. The entrance into the City challenges this idea of a hard city-desert “edge”. A series of visually-arresting, aerial images line the entryway as paired scrim. The scrim are positioned to seem visually unbroken, but upon approach, people find they can “walk through” the illusion.

Each set of scrim illustrates the city’s connection to the larger desert ecosystem, through: 1) water flow; 2) heat; and 3) native and exotic species ranges. As people cross the threshold, they consider such questions as: How far does our water travel and how long does it take to reach us? What is hot? How far do we typically go by foot or by car? How do these answers compare to cities on the coast, mountains, or plains?

“Oasis”

After passing through the Edge, people encounter Oasis. We are the designers of our habitats. As flora and fauna evolved ways of adapting to desert heat and aridity, so did people. By turning to our cultural toolbox, we learned to shift the odds more in our favor. The Roosevelt Dam was built in 1911, creating the largest artificial lake in the world. President Theodore Roosevelt predicted that such great works would turn central Arizona into “one of the richest agricultural areas in the world.” It seemed that a lifestyle of sunshine, citrus trees and grass was possible here after all.

In 1935, the “Valley of the Sun” slogan was coined by a local advertising agency for the Phoenix Chamber of Commerce. The introduction of the air-conditioner made this transformation complete, and in tandem with a post-war home construction boom, the city’s population increased 311% by the 1950s. The potential to expand the city grid seemed infinite. Comfort and convenience were achieved through technology; and

City: On “The Edge”

affordable home construction and political will helped propel the Valley’s image as a twentieth-century American oasis. Decades of exponential growth also raised, however, environmental concerns. Public awareness around ecological issues spurred movements to protect and conserve our natural resources. The creation of the McDowell Sonoran Preserve was one such movement, preserving the land for future generations while also framing the desert ecosystem as a vital asset.

Against this backdrop of urban growth is the reality that water is a limited resource; and technological adaptations and complex choices have been, and continue to be, made to live here. This story is told through a series of vivid and charming vignettes based on the idea of home—the private “oases” we’ve built in the desert—alongside the hard numbers of water availability and population growth. Using local residential forms: from adobe houses to bungalows, mid-century pre-fabricated homes to retirement communities and townhouses, intimate and evocative

installations (animated by sound, holograms, scents, etc.) are attached to first-person accounts of life in the Valley. For example, the memory of family road trips in the dead of the night before air-conditioning, sleeping on the porch with hanging wet sheets, growing citrus in the backyard, childhood summers in the swimming pool, and “lawns” made of glued-down pea gravel. The installation depicts human adaption to the desert environment through a visual history of urbanization: the policies and technological adaptations (eg. air-conditioning, automobiles, hydraulic pumps) that made growth possible on the one hand, and our responses to an increasingly man-made environment over time, on the other. Period house models depict both original forms and green modifications.

The overall effect will show how local wisdom can find its way back over time in new forms, and how cultural shifts can spark new innovations. What will a “green” Scottsdale home be like in the future? The result captures both our nostalgia for the past and our hope

for the future, providing slices of time that invite conversation.

City: On “The Edge”

*Where there's a river,
that tastes of direction.*

*Where there's an orchard,
that says survival.*

*Where there's a desert,
that changes everything,
as if earth hadn't wanted
to fill only her own need.*

“Desert” by Patricia Hooper

A Changing Landscape

As people examine each house, they unlock and reveal the larger ecological and cultural context of each “oasis.” We have lived on earth for 200,000 years; but we have altered the planet more since 1950 than in our whole prior existence. Since 1950, the Phoenix metropolitan area has expanded by over 500

square miles and increased its population by 1.4 million. We are more, and consume more than ever. In the American Southwest, the consumption story is essentially about water. Generations have sought water security, again and again, in the desert, from the Huhugam canal builders to the Phoenician hydraulic masters; and we gained it (for a time) through technological achievement and political will power. We are no longer solely dependent on where we live for the things we need. The Colorado Arizona Project waters travel more than 300 miles through mountains, over plateaus, and across deserts to reach our city faucets. How many Colorado Rivers do we need to maintain our current rate of growth? What kinds of individual actions and policy measures can make a difference? What is the larger environmental context for our Oasis? While each house is at first blush self-contained, it is a habitat nested within larger systems: the city, the web of desert life, the water cycle, etc. Over time, we have been in dialogue with these systems.



1915



1962



1994

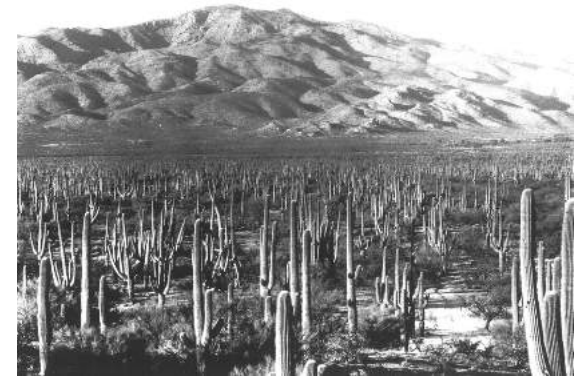
City: On “The Edge”

Reclaiming the Desert

Like all life forms in the Sonoran Desert, people also followed the water. They settled at the convergence of six rivers—the Salt, Gila, San Pedro, Santa Cruz, Verde, Agua Fria. From CE 1 until 1450, the Huhugam reclaimed and farmed these desert lands for cotton, corn, agave, squash and beans. Famously known for engineering “the largest prehistoric irrigation system in North America”, their canal systems (at least 1000 miles in the Salt River Valley alone) brought water to over 100,000 acres of farmland, which in turn produced enough food for tens of thousands of people and served their villages along the banks of flowing rivers. They also devised structures and techniques for sustaining crops and communities on alluvial fans, far from springs or permanently flowing water.

There is evidence that this region has experienced climate change before. Over time, large numbers of climate refugees migrated out of the drought-stricken Four Corners

region towards the Huhugam’s settlements in the late 13th century, perhaps propelling the Huhugam to move into less dispersed and more centralized communities. They became increasingly more urban. However, while they found security in these urban centers, population growth and a narrowing diet led to a decline of able-bodied workers. They could not maintain or scale down the extensive and sophisticated hydraulic system around which this lifestyle was built. It is speculated that they were forced to abandon their cities and return to a more sustainable way of life in the desert. Subsequent generations of the Akimel O’odham (“River People”) adapted their irrigation culture to riparian habitats, while the Tohono O’odham (“Desert People”) practiced flash flood farming technique that required precise timing with the annual Sonoran monsoons.



1935



1960



1998

City: On “The Edge”

“In One Generation...”

The Salt River Pima-Maricopa Indian Community has described its relationship to the land as one of respect for future generations, to whom the land belongs. It is a concept echoed by influential environmentalist Wendell Berry, “...the world is not given by his fathers, but borrowed from his children.”

Desert “memoryscapes” – a landscape diorama, desert object, or photograph associated with personal stories of ecological change witnessed over a generation and our responses to them – show the meaningful connections we make with our environment over time. We can see how the region has changed over the decades, and the notable acceleration of this change in recent years. Soundscapes recorded in the desert over a span of forty years can describe urbanization through sound and visual spectrographs—a story from the desert’s point of view. The phenomenal expansion of the urban streetscapes, the falling water line in Lake Mead, and other changes to the landscape are

documented through individual testimonials, photos and other personal memorabilia.

The Center can continually update the stories presented here with crowd sourced content. Is the City looking more like the desert? Are wildlife corridors intersecting with roadways? Where are birds singing the loudest? What was the Preserve like when it was first created? The style of presentation relates to the stories and may be as diverse as the storytellers. Various forms of storytelling are possible: oral history, visual art, music, soundscape audio, poetry, etc.

The rate of change is also connected to the idea that the desert can operate on time scales different from our own. It is not inconceivable that the saguaro we passed on our hike will outlive us by a hundred years. The watershed ensures the life of our rivers through its slow release of water. Without them, the waters come down too quickly for the system to sustain us. Time is important in the desert; unappreciated, we run the risk

of uncoupling the ecological synchrony that underpins the whole system.

Man’s relationship to desert time can be presented through a “time-lapse” photo series of people with the same desert landmark. A young child stands by a tall saguaro in her yard; in the next photo, she has visibly matured, but the saguaro is seemingly unchanged. As we share this home in the desert, our ripple on the land may seem short-lived, but in desert time, it has a long-term impact.

By 2050, a projected 66% of the world’s human population will be living in cities. How does urban development alter the desert ecosystem; and how are we, in turn, altered by these changes? Over time, there will be fewer animals living in the wild because there will be less wild to live in. Cityscapes are fast-changing and varied, creating both negative pressures for many species, but also opportunities for a few. Those that adapt to the city will be different from their brethren in

City: On “The Edge”

the wild... that is, more “urban.”

A View to the Future

Tomorrow, Block by Block

Tomorrow, Block by Block demonstrates how individual decisions can have a collective impact, and how policies can change/influence individual behaviors. Players work together to ensure sustainability for a virtual city. Users sit at a large digital table with wooden building blocks that allow them to design a city block (building up and out) using augmented reality. They can choose to apply architectural and landscaping principles found in many desert cities and/or green strategies, such as: narrow streets with building overhangs, courtyards, tree-lined avenues, xeriscaping, or technologies like solar panels, light rail, green building materials, water harvesting techniques, etc.

Players respond to various challenges as they build (increased temperatures, flooding, population growth, etc.) and select policy options. Users see how their urban planning strategies (dense centers versus sprawl,

public transit versus automobiles) and policy decisions (agricultural, industrial, or residential developments) impact daily conditions and periodic challenges of drought, flooding, and high temperatures. Users can see how others have “voted” on these policies and how it changes available options. They get a “health and happiness” index to see if their designs are impacting the human and non-human city dwellers favorably. In addition, they can see how urban and transportation infrastructures impact natural infrastructures (based on the current research conducted by The Nature Conservancy).

The game can be updated to introduce real policy ideas being considered by local municipalities and environmentalists. Players can compare their city block designs to the rest of the city, and discover the least and most popular strategies among all users. At the end of the session, users can add their block to the evolving desert city. How does the newly-designed city compare to other desert cities?

Deserts Around the World and Their Cities

A visual tour of desert cities around the world explores their differences and similarities to cities in the Valley. It shows how other cities have responded to similar issues and challenges, and the cultural changes and technological solutions they have invested in.

Biomimicry Station

The Sonoran Desert has the greatest diversity of plant growth forms—architectural strategies for dealing with heat and drought—of any desert in the world. This habitat richness leads to high biodiversity, as well as, a potential source of ideas for today’s sustainability challenges. Indian Bend Wash is an example of how the citizens of Scottsdale chose to work with nature’s design rather than oppose it by engineering concrete channels to mitigate flooding.

Since plants are rooted to a single spot on the earth, they need to be able to withstand weather changes over time. Desert plants

City: On “The Edge”

may serve as particularly helpful guides as we attempt to adapt to a hotter and drier planet. We'll have the best chance to learn from them if we protect the habitats where they are found.

Through a digital biomimicry game, people match desert plant adaptations to problems scientists and engineers are currently attempting to solve. For example, saguaro stomata open and close to collect carbon dioxide, but as the pores open, the cactus loses water. Because of this, the stomata are closed in the daytime and open during the night. In Doha, the Minister of Municipal Affairs & Agriculture Building, mimics the skin of the saguaro: hundreds of smart shades open and close depending on the intensity of the sun, thereby saving precious energy.

The Desert We Call Home: Global Conversations

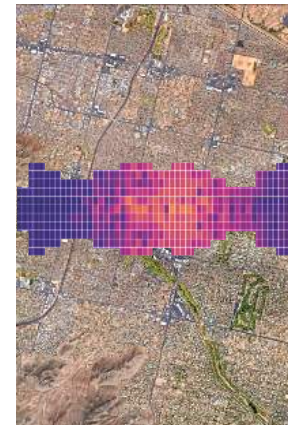
Climate change affects the world, which is becoming more arid overall. The global interchange is two-way: what we can learn from cities and cultures in other arid regions and what we can teach places that will become more arid in the decades ahead. Phoenix was built in one of the hottest and driest places on the planet, and as such, it is ideally positioned to deal with climate change.

Through its educational partnerships with Scottsdale K-12 schools, the Desert Discovery Center works with students to explore how people live in deserts around the world and create a video database of global conversations. Facilitated by the Center, student questions are posed to citizens of other deserts, who can videotape or Skype-in their answers. A virtual exchange program may be established between two schools for a longer-term relationship, as part of a designed curriculum.

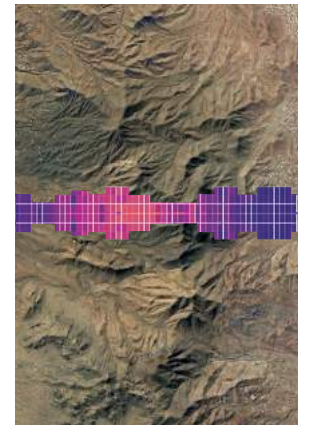
City: On "The Edge"



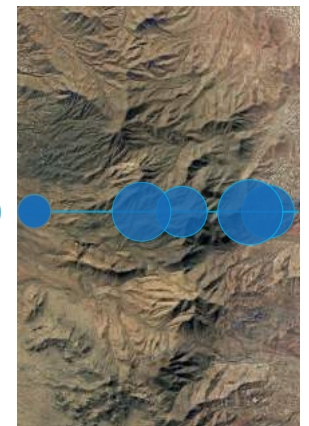
ANIMAL TRACKING



HEAT MAP



DISTANCE OF WATER



City: On “The Edge”



Appendix



01 Contract Deliverable Checklist

THINC DESIGN

DESERT DISCOVERY CENTER SCOTTSDALE
TASK 1200 DELIVERABLES CHECKLIST

UPDATED ON
6/30/17

Task 1200 Deliverable	Date Submitted	Included In	Responsible	Information Required
1. Draft Interpretive Plan including diagrams, illustrations, and narratives of exhibits and exhibit spaces, content outline, and defining interpretive approaches for major exhibits; education and research strategy in collaboration with ASU, including live interpretation plan (The Interpretation Plan will address Tasks 1200 Desert Discovery Center)				
Interpretive Plan	18-May	Interpretive Plan	Cynthia	
Illustrations	18-May	Keynote Presentation	Phillip	
Education strategy	18-May	Interpretive Plan	Cynthia	Bill will send contact info for Linda Reich, also include teacher pilot program
Research Strategy (ASU)	18-May	Interpretive Plan	Cynthia	Add GDI, Bill will send GDI Pilot program brochure to include in addendum
Live interpretation plan	18-May	Interpretive Plan	Cynthia	OK as envisioned by Cynthia
2. Concept renderings of major site experiences				
Level 4 views	18-May	Keynote Presentation	Phillip	
Renderings	6-Jul	Final Document	Phillip	Desert Discovery Center will select level views to be rendered
3. Digital media strategy				
Matrix	18-May	Appendix	Phillip	Describe process for developing media in implementation plan, include matrix that shows where, what, why & how
4. Draft specimen list and object list				
Matrix	18-May	Appendix	Phillip	Where, why, what
5. Preliminary Implementation Plan, including ROM Budget, prepared by estimating consultants and ED; Preliminary Schedule				
Implementation plan	18-May	Appendix	Carson	Narrative of steps for those not familiar with process, supports schedule and digital media strategy
Schedule	6-Jul	Final Document	Carson	Hypothetical by week 1 or month 1 etc., placeholder in 5/18 submittal
ROM Budget (Hard Cost)	6-Jul	Final Document	Carson	+-\$13M
6. Concept graphics and visuals to support branding strategy for Desert Discovery Center				
Graphics & Visuals	18-May	Appendix	Phillip	Submit branding process narrative

02 Exhibit Procurement List

THINC DESIGN

DESERT DISCOVERY CENTER
PRELIMINARY SPECIMEN LIST

UPDATED ON
5/19/2017

Area	Exhibit	Description		Procurement By												Other		
				Building Contractor	Landscape Contractor	Habitat Contractor	Exhibit Fabricator	Lighting Effects	Graphic Producer	Media Producer	AV/IT Integrator	Live Animal Wrangler	Exhibit Specialist	Provided by Owner	BoH Space Required	Replacement Stock on Site	Notes	
Pod																		
	Desert Time	Projection and Audio					X		X	X								
	Pod Floor	Projection					X		X	X								
	Sound Corridor	Soundscape							X	X								
	Aroma Corridor					X												
	Creosote Bush	Oil, Terpenes Essences										X		X	X			
	Bur Sage	Oil, Terpenes Essences										X		X	X			
	Camphor Weed	Oil, Terpenes Essences										X		X	X			
	Wet Soil	Oil, Terpenes Essences										X		X	X			
	Desert Lavender	Oil, Terpenes Essences										X		X	X			
	Sweet Acacia	Oil, Terpenes Essences										X		X	X			
	Interpretive Graphics							X										
	Finishes																	
	Floor		X														Playground material: acoustic properties & can be projected upon	
	Wall		X														Consider acoustics	
	Ceiling		X														Consider acoustics	
	FF&E																lean rails, loose seating	
	Lean rails		X															
	Loose seating												X					
Bajada																		
	Nectar Corridor							X	X	X								
	Web of Life								X	X	X							
	Build an Ecosystem							X	X	X								
	Ceiling Projections								X	X								
	Flagstone Display Tables					X												
	Thematic Poles				X													
	Animal Sculpture				X													
	Critter Display Discs				X													

02 Exhibit Procurement List

THINC DESIGN

DESERT DISCOVERY CENTER
PRELIMINARY SPECIMEN LIST

UPDATED ON
5/19/2017

Area	Exhibit	Description	Procurement By											Other	
			Building Contractor	Landscape Contractor	Habitat Contractor	Exhibit Fabricator	Lighting Effects	Graphic Producer	Media Producer	AV/IT Integrator	Live Animal Wrangler	Exhibit Specialist	Provided by Owner	BoH Space Required	Replacement Stock on Site
															Notes
		Interpretive Graphics						X							
		Finishes													
		Floor	X												
		Wall	X												Rammed Earth Walls
		Ceiling	X												
		FF&E													
		Mountains													
		Mountains-What is Above				X		X	X	X					
		Root Ball			X				X	X					3D Root Ball & Trunk with Ceiling Image
		Virtual Sandbox				X			X						Sand and digital interactive
		Erosion Table			X	X									Water and sand interactive
		Soil Cross Sections				X					X				Ground Form with soil pockets & critter burrows
		Buckthorn Cholla		X											Replacement Stock at Local Nursery
		Fishhook Barrel Cactus		X											Replacement Stock at Local Nursery
		Jumping Cholla		X											Replacement Stock at Local Nursery
		Ocotillo		X											Replacement Stock at Local Nursery
		Prickly Pear Cactus		X											Replacement Stock at Local Nursery
		Soap Tree Yucca		X											Replacement Stock at Local Nursery
		Teddy Bear Cholla		X											Replacement Stock at Local Nursery
		California Poppy		X										X	Difficult to grow in all seasons
		Woolly Plantain		X										X	
		Brittlebush		X											Replacement Stock at Local Nursery
		Apricot Globe-mallow		X											Replacement Stock at Local Nursery
		Creosote		X											Replacement Stock at Local Nursery
		Jojoba		X											Replacement Stock at Local Nursery
		Foothill Palo Verde		X											Replacement Stock at Local Nursery
		Velvet Mesquite		X											Replacement Stock at Local Nursery
		Harvester Ants										X			

02 Exhibit Procurement List

THINC DESIGN

DESERT DISCOVERY CENTER
PRELIMINARY SPECIMEN LIST

UPDATED ON
5/19/2017

Area	Exhibit	Description		Procurement By											Other		
				Building Contractor	Landscape Contractor	Habitat Contractor	Exhibit Fabricator	Lighting Effects	Graphic Producer	Media Producer	AV/IT Integrator	Live Animal Wrangler	Exhibit Specialist	Provided by Owner	BoH Space Required	Replacement Stock on Site	Notes
		Tarantula	Live Invertebrate									X					
		Scorpion	Live Invertebrate									X					
		Interpretive Graphics							X								
		Finishes															
		Floor		X													
		Wall		X													
		Ceiling		X													
		What is your watershed	Touch screen interactive				X			X	X						Video
		Geoglyphs & Petroglyphs	Touch screen interactive				X			X	X						Video
		FF&E															
		Tom's Thumb															
		Time Boulders	Rockwork/Environments			X	X										Large boulders, real and artificial
		A Sea that became a Desert	Augmented Reality					X		X	X						
		Views from the Anthropocene				X											
		Artifacts															
		Shark Teeth	Collected Object											X			
		Petrified Wood	Collected Object											X			
		Dart Points	Collected Object											X			
		Finishes															
		Floor		X													
		Wall		X													
		Ceiling		X													
		FF&E															
		Docent Table & Chair												X			
		Geological Strata	Projection				X			X	X						
		Sandstone	Rock sample				X							X			
		Shale	Rock sample				X							X			
		Chert	Rock sample				X							X			
		Slate	Rock sample				X							X			

02 Exhibit Procurement List

THINC DESIGN

DESERT DISCOVERY CENTER
PRELIMINARY SPECIMEN LIST

UPDATED ON
5/19/2017

Area	Exhibit	Description		Procurement By											Other		
				Building Contractor	Landscape Contractor	Habitat Contractor	Exhibit Fabricator	Lighting Effects	Graphic Producer	Media Producer	AV/IT Integrator	Live Animal Wrangler	Exhibit Specialist	Provided by Owner	BoH Space Required	Replacement Stock on Site	Notes
		Limestone	Rock sample				X							X			
		Granite	Rock sample				X							X			
		Artifacts inside or embedded in Time Boulders				X											
		Trilobites	Replica/Real TBD			X											Integral with Time Boulder
		Brachiopod	Replica/Real TBD			X											Integral with Time Boulder
		Primitive Fish	Replica/Real TBD			X											Integral with Time Boulder
		Coastal Plant Life	Replica/Real TBD			X											Integral with Time Boulder
		Club Mosses	Replica/Real TBD			X											Integral with Time Boulder
		Ferns	Replica/Real TBD			X											Integral with Time Boulder
		Marine Reptiles	Replica/Real TBD			X											Integral with Time Boulder
		Lava	Rock Sample											X			
		Pegmatite	Rock Sample											X			
		Schist	Rock Sample											X			
		Gneiss	Rock Sample											X			
		Copper	Mineral Sample											X			
		Silver	Mineral Sample											X			
		Interpretive Graphics							X								
		Finishes															
		Floor		X													
		Wall		X													
		Ceiling		X													
		FF&E															
		Wash															
		After the Rains			X	X	X	X		X	X						
		Night Watch			X	X		X		X	X						
		Time Windows	Projection					X		X	X						Time windows also appear at other areas
		Flood Event	LED Display		X	X		X		X	X						
		Dry Wash			X	X											
		Desert Avatar								X	X						

O2 Exhibit Procurement List

THINC DESIGN

DESERT DISCOVERY CENTER
PRELIMINARY SPECIMEN LIST

UPDATED ON
5/19/2017

Area	Exhibit	Description		Procurement By											Other	
				Building Contractor	Landscape Contractor	Habitat Contractor	Exhibit Fabricator	Lighting Effects	Graphic Producer	Media Producer	AV/IT Integrator	Live Animal Wrangler	Exhibit Specialist	Provided by Owner	BoH Space Required	Replacement Stock on Site
																Notes
		Slices of Desert Life								X	X					
		Zoetrope					X									Zoetropes also appear at other areas
		Ephemeral Pool														
		Spadefoot Toads/Tadpoles	Live Amphibian									X			X	X
		Fairy Shrimp	Live Crustacean										X			
		Wash Ground Form														
		Barrel Cactus	Live Cactus		X											Replacement Stock at Local Nursery
		Harvester Ants	Live Invertebrate										X			
		Solitary Bees	Live Invertebrate										X			
		Bark Scorpion	Live Invertebrate										X			
		Stink Beetle	Live Invertebrate										X			
		Centipedes	Live Invertebrate										X			
		Iron Clad Beetle	Live Invertebrate										X			
		Blister Beetle	Live Invertebrate										X			
		Gila Monster	Live Reptile									X				
		Desert Tortoise	Live Reptile									X				Collection Permit Required
		Spotted Whiptail	Live Reptile									X				Containment Required
		Spiny Lizard	Live Reptile									X				Containment Required
		Short-horned Lizard	Live Reptile									X				Collection Permit Required
		Rattlesnake	Live Reptile									X				
		Kingsnake	Live Reptile									X				
		Gopher Snake	Live Reptile									X				
		Whiptail Lizard	Live Reptile									X				
		Chuckwalla Lizard	Live Reptile									X				
		Collared Lizard	Live Reptile									X				
		Ornate Box Turtle	Live Reptile									X				
		Zebra-tailed Lizard	Live Reptile									X				
		Desert Lavender	Live Shrub		X											Replacement Stock at Local Nursery
		Blue Palo Verde	Live Tree		X											Replacement Stock at Local Nursery

O2 Exhibit Procurement List

THINC DESIGN

DESERT DISCOVERY CENTER
PRELIMINARY SPECIMEN LIST

UPDATED ON
5/19/2017

Area	Exhibit	Description		Procurement By											Other	
				Building Contractor	Landscape Contractor	Habitat Contractor	Exhibit Fabricator	Lighting Effects	Graphic Producer	Media Producer	AV/IT Integrator	Live Animal Wrangler	Exhibit Specialist	Provided by Owner	BoH Space Required	Replacement Stock on Site
																Notes
		Desert Ironwood	Live Tree		X											Replacement Stock at Local Nursery
		Fremont Cottonwood	Live Tree		X											Replacement Stock at Local Nursery
		Interpretive Graphics							X							
		Finishes														
		Floor		X												
		Wall		X												
		Ceiling		X												
	FF&E															
		Glass Rails		X												
		Overlook Platforms		X												
		Saguaro Sundial														
		Dial lines, animal shadow sculptures					X									
		Saguaro Listening Station					X			X	X					
		Saguaro Mysteries														Displays suitable for outdoors
		Cross-section of Saguaro	Object											X		
		Dried Saguaro Ribs	Object											X		
		Saguaro Boot	Object											X		
		Saguaro Seeds	Object											X		
		Saguaro Flowers	Object											X		
		Calendar/Talking Stick	Object											X		
		Saguaro Derived Foods	Object											X		
		Interpretive Graphics							X							
		Finishes														
		Floor		X												
		Wall														
		Ceiling														
	FF&E															
		Docent table & chair												X		

O2 Exhibit Procurement List

THINC DESIGN

DESERT DISCOVERY CENTER
PRELIMINARY SPECIMEN LIST

UPDATED ON
5/19/2017

Area	Exhibit	Description	Procurement By												Other	
			Building Contractor	Landscape Contractor	Habitat Contractor	Exhibit Fabricator	Lighting Effects	Graphic Producer	Media Producer	AV/IT Integrator	Live Animal Wrangler	Exhibit Specialist	Provided by Owner	BoH Space Required	Replacement Stock on Site	Notes
City																
	Data Graphic							X		X						
	On the Edge	Environmental graphics				X	X		X	X						
	Changing Landscapes	Projection				X	X		X	X			X			Projection on suspended transparent walls. Media incorporates owner-supplied images
	Reclaiming the Desert	Audio, Photo, & Artifact Display				X		X	X	X						
	In one generation	Audio&Video				X			X	X						Individual oral histories
	House Model Tables					X										
	Late 19th to 21st century	Models				X										
	Tomorrow block by block	AR interactive				X				X						Digital/physical building block table
	Biomimicry Station	Hands on interactive				X		X								
	Interpretive Graphics							X								
	Finishes															
	Floor		X													
	Wall		x													
	Ceiling		x													
	FF&E															
You are Here Split Screen Map																
	Orientation map															
	Flat Screen, touch or gesture activation					X		X	X	X						
Sonoran Trail Game																
	Branching Decision Game															
	App at Kiosk or on Personal Device							X	X	X						
Point of View Scopes																
	See Preserve from One's Own and Expert's P.O.V.					X		X	X	X						
Citizen Science Connect																

02 Exhibit Procurement List

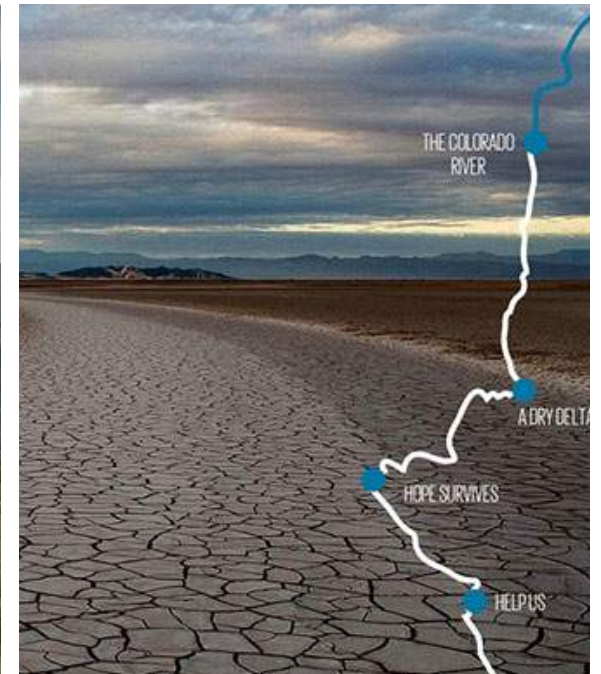
THINC DESIGN

DESERT DISCOVERY CENTER
PRELIMINARY SPECIMEN LIST

UPDATED ON
5/19/2017

Area	Exhibit	Description		Procurement By											Other	
				Building Contractor	Landscape Contractor	Habitat Contractor	Exhibit Fabricator	Lighting Effects	Graphic Producer	Media Producer	AV/IT Integrator	Live Animal Wrangler	Exhibit Specialist	Provided by Owner	BoH Space Required	Replacement Stock on Site
																Notes
		Real Time Science & Conservation Data														
		App at Kiosk or on Personal Devise							X	X	X					
		Smart Field Guide														
		Preserve Information														
		App at Kiosk or on Personal Devise							X	X	X					
		Explora-pod Stations														
		Apply 4 Question Approach to Current Scientific Issues					X		X	X	X					
		Live Animal Demonstrations														
		Face to Face with Iconic Wildlife										X		X		
		DESERT Discovery Carts														
		Docent Guided Activities					X					X		X		
		Sonoran Room														
		Workshops	TBD													
		Changing Exhibitions														
		TBD														

03 Graphic Mood Board



04 Draft Branding Strategy

DESERT DISCOVERY CENTER BRANDING STRATEGY CONCEPT GRAPHICS AND VISUALS

Branding is an embodiment of an institutional culture; it is based on a holistic perspective of who an organization is and how they wish to be perceived. A successful organization proactively and deliberately shapes the perceptions of their institution. Thus, a branding strategy is a comprehensive plan that sets the tone for outreach and communication.

The Desert Discovery Center is in the process of refining their public perception and honing their messaging through development of a new brand identity. A collaborative effort will be required between Thinc and the Desert Discovery Center to enable Thinc to prepare concept level graphics in support of the Center's branding efforts.

Initially we suggest that the Desert Discovery Center revisit and refine several aspects of their communication planning to articulate how the Center is perceived now, and how its wishes to be perceived. Many of these discussions can be accomplished with short conversations within the Center's staff; others may require polling the larger Desert Discovery Center community.

- a. Desert Discovery Center Core Values: (i.e. Sustainability, Desert Preservation) Starting with the mission and vision statements, reduce the core values to a simple, short list.
- b. Target Audiences: (i.e. school children, vacationers, etc.). What are their attitudes, knowledge, interests, preferences or behaviors?
- c. Current Perceptions of Organization: (i.e. advocates, green politicians) List positive and negative perceptions of the Desert Discovery Center. This will help highlight the opportunities to build on, or areas where we need to reverse perceptions.
- d. Desired Personality and Voice: (i.e. upbeat, knowledgeable, neighborly) Once clearly defined, the personality and a voice can be manifested in the visual look and feel, as well as the tone of communications.
- e. Market Position and Differentiation: What makes the Center different from the other organizations (i.e.: Desert Botanical Garden or Phoenix Science Museum). What experiences does the Desert Discovery Center provide that no one else can provide and/or match?
- f. Naming and Messaging: If a new name is being contemplated for the institution, formal or informal studies should be conducted to test names under consideration, as well as any associated taglines and key messages.
- g. Communication Channels: Identify the range of collateral materials for which a visual identity needs to be developed (i.e. newsletters, solicitations, etc.)

Once the materials listed above are in hand in the Schematic Design Phase, Thinc will develop up to three options for the required concept level visual identity elements. Thinc will meet with Center to present each approach in draft form and gather feedback. Based on the Center's direction, Thinc will refine one approach. Thinc's deliverables for Schematic Design will include the following:

- Logo
- Color Palette
- Typography Approach

05 Research References

Desert Discovery Center
Research References (as of 5.19.17)

Reference Author	Reference Title	Book/Journal/Magazine/Newspaper/Blog	Publisher/Organization
Andrews, John P. and Todd W. Bostwick	Desert Farmers at the River's Edge: The Hohokam and Pueblo Grande	Desert Farmers at the River's Edge: The Hohokam and Pueblo Grande	City of Phoenix, Parks, Recreation and Library Dept., Pueblo Grande Museum and Archaeological Park
Archer, Steve, et. al.	Plant Communities, Mountains, and Climate in Arizona	Bakyards & Beyond - Rural Living in Arizona	School of Natural Resources, University of Arizona
Aune, Keith and Elizabeth Williams	Spectacular Migrations in the Western U.S.		Wildlife Conservation Society
Beckman, Stephen T.	"Book Review: The Future of the Suburban City/ Lessons from Sustaining Phoenix	Journal of Planning Education and Research	
Belnap, Jane	Biological Soil Crusts: Webs of Life in the Desert	Canyonlands Research Bibliography	
Belnap, Jayne, Matthew Bowker, and Roger Rosentreter	A Field Guide to Biological Soil Crusts of Western U.S. Drylands: Common Lichens and Bryophytes		U.S. Geological Survey
Benson, Thor	Can America's Desert Cities Adapt Before They Dry Out and Die?	Fast Co.Exist	Fast Company & Inc
Botswick, Todd W.	Hohokam Rock Art: Depicting Life and the Heavens	Old Pueblo Archaeology No.22	Old Pueblo Archaeology Center
Boyink, Harrison	Desert Washes		Ditching Suburbia
Bradshaw, Corey J.A., Barry W. Brook, and Navjot S. Sodhi	Chapter V.1: Causes and Consequences of Species Extinctions	Princeton Guide to Ecology	
Briggs, John M., et al.	Effects of urbanization on plant species diversity in central Arizona	Frontiers in Ecology and the Environment	The Ecological Society of America
Britton, Sheilah	The Sound of Sound	ASU Research - Winter 1997	Arizona State University
Brusca, Richard C. and Mrill Ingram	Patterns of Life (from the chapter: Desert Storms)	A Natural History of the Sonoran Desert	Arizona-Sonora Desert Museum
Burquez,Alberto, et. al.	Vegetation and Habitat Diversity at the Southern Edge of the Sonoran Desert	Ecology of Sonoran Desert Plants and Plant Communities	The University of Arizona Press
Buscher, Dr. Dick and Linda Buscher	Saguaros: Living Bouquets of the Sonoran Desert (Photos)	Live Science	
Chadwick, Douglas H.	Life in the Desert: Songs of the Sonoran	National Geographic	
Chapin III, F. Stuart, et al.	Consequences of changing biodiversity	Nature	Macmillan Publishers Limited
Chapin III, F. Stuart, et al.	Consequences of changing biodiversity	Nature	Macmillan Publishers Limited
Cho, Renee	Climate Change Poses Challenges to Plants and Animals	State of the Planet	Earth Institute, Columbia University
Cohen-Shacham, E., G. Walters, C. Janzen, and S. Maginnis	Nature-based Solutions to address global societal challenges		IUCN

05 Research References

Desert Discovery Center Project
Research References (as of 5.19.17)

	A	B	F	G
	Corbett, Peter	Tom's Thumb won't be listed on federal maps anytime soon		AZ Central
22	Corbin, Shawndrea	Reviving the Burden Basket	Phoenix Home & Garden	
23	Crosswhite, Frank S.	Desert Plants, Habitat and Agriculture in Relation to the Major Pattern of Cultural Differentiation in the O'odham People of the Sonoran Desert	Desert Plants	The University of Arizona
24	Crouthamel, Steve	Piman: Native Americans of the Sonoran Desert		Desert USA
25	Daniel G. Gruber, Larry S. Levy, Joni T. Millavec, William H. Ruppert and 2Brian F. Gootee	Preliminary Geologic Survey of the Lost Dog Overlook Vicinity, McDowell Sonoran Preserve, Scottsdale, Arizona		McDowell Sonoran Conservancy, Arizona Geological Survey
26	Davis, John, Ferran Garcia-Piche, and Kevin Hultine	The Secret Life of the Sonoran Desert	Talk of the Nation	NPR, WNYC Radio
27	DeAngelis, Mary Elizabeth	From thin air, clean drinking water	Illumination	Duke Energy
28	deBuys, William	A Great Aridness: Climate Change and the Future of the American Southwest		Oxford University Press
29	deBuys, William	Could Phoenix Soon Become Uninhabitable?	The Nation	
30	DeLange, Eve and George DeLange	"Hole In The Rock" Ancient Hohokam Solstice And Equinox Astronomical Sun Watch Station		
31	Dimmitt, Mark A.	Biomes & Communities of the Sonoran Desert Region	A Natural History of the Sonoran Desert	Arizona-Sonora Desert Museum
32	Dimmitt, Mark A.	Plant Ecology of the Sonoran Desert Region	A Natural History of the Sonoran Desert	Arizona-Sonora Desert Museum
33	Dolph, Mara	What Types of Adaptations Must Desert Animals Make to Conserve Water?	Seattle PI	Herst Seattle Media
34	Eden, Susanna and Marie-Blanche Roudaut	Water Resources Protection Spurs Forest Restoration Actions	Arizona Water Resource	University of Arizona
35	Elkins-Tanton, Lindy	Change Begins with a Question Lindy Elkins-Tanton TEDxStMarksSchool		TED
36	Evans, Kate	Make it rain: Planting forests could help drought-stricken regions	Forests News	Center for International Forestry Research (CIFOR)
37	Fudala, Joan C.	The People's Preserve: How Scottsdale Created the McDowell Sonoran Preserve		City of Scottsdale, Arizona
38	Farrier, David	How the Concept of Deep Time is Changing	The Atlantic	The Atlantic Monthly Group
39	Fleming, Theodore H.	Climb Every Cactus	BATS Magazine	
40	Gammage Jr, Grady	The Future of the Suburban City: Lessons from Sustaining Phoenix		Island Press
41	Gammage Jr, Grady	Memorandum Re: Desert Discovery Center		Gammage & Burnham, P.L.C.
42				

05 Research References

Desert Discovery Center Project
Research References (as of 5.19.17)

	A	B	F	G
	Garfin, Gregg and Guido Franco	"Southwest" National Climate Assessment		U.S. Global Change Research Program
43	Gartner, Todd and Yiyuan Qin	Watersheds Lost Up to 22% of their Forests in 14 Years. Here's How it Affects Your Water Supply		World Resources Institute
44	Gatz, Tom	How Old is that Saguaro		Desert Botanical Garden
45	Gilbert, Natasha	More species means less disease	Nature	
46	Gootee, Brian F., and Daniel G. Gruber	Quartz Vein Investigation, McDowell Sonoran Preserve, Scottsdale, Maricopa County, Arizona		Arizona Geological Survey
47	Graham, Miriam	Voice of the Desert: Featured Interpretive Program		National Park Service
48	Greenwell, Michael	The Impact of Wildlife Extinction and the Importance of Biodiversity	Exit Stage Right	
49	Groffman, P. M., P. Kareiva, S. Carter, N. B. Grimm, J. Lawler, M. Mack, V. Matzek, and H. Tallis,	Chapter 8: Ecosystems, Biodiversity, and Ecosystem Services	Climate Change Impacts in the United States: The Third National Climate Assessment	U.S. Global Change Research Program
50	Gruber, Dan	Mountains		
51	Gruber, Dan	Washes		
52	Gruber, Dan	Urban Edge		
53	Gruber, Dan	Teddy bear cholla		
54	Gruber, Dan	Saguaros		
55	Gulick, Sarah	A Day in the Desert: Saguaro Wilderness		National Park Service
56	Gustafan, Annie, Paul Hirt, and Kelli L. Larson	The Mirage in the Valley of the Sun	Environmental History	Oxford University Press
57	H., Alice	Saguaro Cactus		Blue Planet Biomes
58	Haney, Jeanmarie A., Daniel R. Majka, Robert M. Marshall, and Marcos D. Robles	Sustainable Water Management in the Southwestern United States: Reality or Rhetoric?		PLOS
59	Hanson, Roseann Beggy	Nature Watching in the Sonoran Desert Region		Arizona-Sonora Desert Museum
60	Hass, Christine	Early Spring in the Sonoran Desert		Nature Sound Map
61	Hirt, Paul, et al.	Water Consumption and Sustainability in Arizona: A Tale of Two Desert Cities		Arizona State University
62	Hull, Chelsea and Steve Jones	McDowell Sonoran Preserve		SEINet Arizona - New Mexico Chapter
63				

05 Research References

Desert Discovery Center Project
Research References (as of 5.19.17)

	A	B	F	G
64	Hull, Chelsey and Steve Jones	Vegetation and Flora of the McDowell Sonoran Preserve, Maricopa County, Arizona		McDowell Sonoran Conservancy
65	Ivanyi, Craig	Rattlesnakes		Arizona-Sonora Desert Museum
66	Kazilek, Charles	Effects of Urbanization Extend to the Global Scale		Arizona State University
67	Keane, John	Managing Water Supply Variability: The Salt River Project	Managing Water Resources in the West Under conditions of Climate Uncertainty: A Proceedings	Committee on Climate Uncertainty and Water Resources Management, National Research Council
68	Kinsey, T. Beth	Foul-smelling Flowers and Plants		Firefly Forest
69	Kinsey, T. Beth	Fragrant Flowers and Plants		Firefly Forest
70	Kinver, Mark	Study shows urbanization's impact on biodiversity	BBC News	BBC
71	Kriss, Sam	Why the Planet Earth II Episode on Cities Is So Startling	The Atlantic	The Atlantic Monthly Group
72	Kukreja, Rinkesh	51 Wonderful Way to Conserve Water		Conserve Energy Future
73	Lambertini, Marco	Our planet is at breaking point. But it's not too late to save it	World Economic Forum	Medium
74	Laudenslayer Jr., William F.	Desert Wash		California Wildlife Habitat Relationships System California Department of Fish and Game California Interagency Wildlife Task Group
75	Lazaroff, David Wentworth	Desert Air and Light	A Natural History of the Sonoran Desert	Arizona-Sonora Desert Museum
76	Leavitt, Parker	Scottsdale's Desert Discovery Center could get a public vote		AZCentral
77	Loomans, Tazmine	House of Light: A Glowing Promise Fades to Dying Ember	Modern Phoenix Neighborhood Network	Modern Phoenix, LLC
78	Lucas, Nancy	DC Ranch Real Estate Information	A Peek at the Peak	
79	Madson, Diana	More Trees Could Cool Phoenix		Yale Climate Connections
80	Magahern, Jimmy	Saudi Arizona	Phoenix Magazine: Hidden Arizona	
81	Magrane, Eric and Christopher Cokinos (ed.)	The Sonoran Desert: A Literary Field Guide		The University of Arizona Press
82	McAuliffe, Joseph R.	Desert Soils	A Natural History of the Sonoran Desert	Arizona-Sonora Desert Museum
83	McGill, Brian	The Sonoran Desert		
84	McGinnies, William G.	An Overview of the Sonoran Desert	An Essay Developed from a Paper given at the opening session of the Second Annual Conference of the Consortium of Arid Lands	Arizona State University

05 Research References

Desert Discovery Center Project
Research References (as of 5.19.17)

	A	B	F	G
85	McKinnon, Shaun	5 reasons to panic about Arizona's water, and 5 reasons not to	The Arizona Republic	
86	Merlin, Pinau	A Filed Guide to Desert Holes	A Filed Guide to Desert Holes	Arizona-Sonora Desert Museum
87	Nabhan, Gary Paul	Biodiversity: The Variety of Life that Sustains Our Own	A Natural History of the Sonoran Desert	Arizona-Sonora Desert Museum
88	Nelson, Rob	Desert Biome		Untamed Science
89	Nilsen, Richard	Phoenix architecture: The rise of adobe	The Arizona Republic	
90	Noronha, Charmaine	Sonoran Desert by moonlight: Quiet and beautiful landscape, but watch out for jumping cactus	Chicago Tribune	
91	Norrell, Brenda	Waking Up in the Sonoran Desert	Censored News	
92	Nunez, Art	Scottsdale's Water Reclamation & Advanced Water Treatment Plant		Scottsdale Water Campus
93	Olson, Carl A.	Insects and the Saguaro	A Natural History of the Sonoran Desert	Arizona-Sonora Desert Museum
94	Oskin, Becky	Sound Garden: Can Plants Actually Talk and Hear?	Live Science	
95	Parker, Sophie	Keep it Cool: What Desert Plants Can Teach Us About Climate Change	Cool Green Science	The Nature Conservancy
96	Patel, Neel V.	The Future of Phoenix: Hotter, Drier, Bigger	Inverse	
97	Perlman, Howard	Groundwater Depletion		USGS
98	Phillips, Steven J. and Patricia Wentworth Comus (ed.)	A Natural History of the Sonoran Desert		Arizona-Sonora Desert Museum
99	Pijanowski, Dr. Bryan	Soundscape Ecology		Purdue University
100	Pitts, Glenda	Sounds of the Sonoran Desert Night		
101	Plagens, Michael J.	Nature Study in the Sonoran Desert: A Guide to the Flora and Fauna Arizona, USA & Sonora, Mexico		Arizonesis
102	Poon, Linda	A Skyscraper Made of Bones: How Biomimicry Could Shape the Cities of the Future	CityLab	Atlantic Media
103	Quach, Gary	Desert Pavement	Desert Geomorphology	CSUF Desert Ecology
104	Radnich, Kathleen	Save Water: Live Like a Desert Native		National Park Service
105	Rasmussen, Jan C.	Geologic History of Arizona	Rocks & Minerals	

05 Research References

Desert Discovery Center Project
Research References (as of 5.19.17)

	A	B	F	G
106	Rea, Amadeo M.	At the Desert's Green Edge: An Ethnobotany of the Gila River Pima		The University of Arizona Press
107	Redman, Charles L.	7 The Urban Ecology of Metropolitan Phoenix: A Laboratory for Interdisciplinary Study	Population, Land Use, and Environment: Research Directions	NCBI Bookshelf
108	Richardson Jr., Dr. John V.	Tracking Desert Animals: A Beginning		
109	Richerson, Peter J.	Chapter 1: What is Human Ecology? Chapter 2: Environment, Technology, and Culture	Principles of Human Ecology	University of California Davis
110	Rogers, Garry	Desert Habitat: Soil Microorganisms		
111	Romero, Soraya	Fairy Shrimp		DesertUSA
112	Royo, A.R.	Prehistoric Desert Peoples: The Hohokam		Desert USA
113	Rubin, Esther	California - Surviving Summer in the Sonoran Desert		The Nature Conservancy
114	Rupp, Molly	Expansion of the Sonoran Desert in Arizona and its Effect on Arizona's Populated Regions		
115	Scarborough, Robert	The Geologic Origin of the Sonoran Desert	A Natural History of the Sonoran Desert	Arizona-Sonora Desert Museum
116	Schaffner, Brynn	Desert Ironwood	Blue Planet Biomes	West Tisbury Elementary School
117	Sekhran, Nik	Pollinators vital to our food supply under threat		Food and Agriculture Organization of the United Nations
118	Sharp, Jay W.	Native Americans - Farmers of the Desert: The Hohokam		Desert USA
119	Sharp, Jay W.	The Hohokam Part 2: The Hohokam Signature		Desert USA
120	Sharp, Jay W.	Mogollon: Basin and Range People		Desert USA
121	Sharp, Jay W.	Desert Food Chain - Desert Food Web		Desert USA
122	Sharp, Jay W.	The Producers: The Plants Role in the Desert Food Chain - Part 2		Desert USA
123	Sharp, Jay W.	The Cacti: A Thorny Feast Desert Food Chain The Cactus - Part 3		Desert USA
124	Sharp, Jay W.	The Yucca Desert Food Chain Producers - Part 4		Desert USA
125	Sharp, Jay W.	The Agave The Desert Food Chain Producer - Part 5		Desert USA
126	Sharp, Jay W.	The Desert Grasslands The Desert Food Chain - Part 6		Desert USA

05 Research References

Desert Discovery Center Project
Research References (as of 5.19.17)

	A	B	F	G
127	Sharp, Jay W.	The Desert Shrubs - Food Chain Producers Desert Food Chain - Part 7		Desert USA
128	Sharp, Jay W.	The Desert's Annual Forbs The Desert Food Chain - Part 8		Desert USA
129	Sharp, Jay W.	Mavericks of the Desert Plant Community The Desert Food Chain - Part 9		Desert USA
130	Sharp, Jay W.	Outlaw Desert Plants Desert Food Chain 10		Desert USA
131	Sharp, Jay W.	Insects Desert Food Chain - Part 12		Desert USA
132	Sharp, Jay W.	The Ugly, the Uglier and the Ugliest Desert Food Chain - Part 13		Desert USA
133	Sharp, Jay W.	Desert Food Chain or Food Web An Introduction		Desert USA
134	Sharp, Jay W.	How Animal Survive in the Desert The Desert Food Chain Part 4		Desert USA
135	Sheridan, Thomas	The O'ogham (Pimas and Paggos) The World Would Burn Without Rain	Paths of Life: American Indians of the Southwest and Northern Mexico	
136	Sheridan, Thomas E.	Human Ecology of the Sonoran Desert	A Natural History of the Sonoran Desert	Arizona-Sonora Desert Museum
137	Sheridan, Thomas E.	Paths of Life: American Indians of the Southwest and Northern Mexico	Paths of Life: American Indians of the Southwest and Northern Mexico	The University of Arizona Press
138	Sisson, Patrick	The Lessons Phoenix can Teach Other Cities about Sustainable Development	Curbed	Vox Media
139	Steele, Kelly	Saguaro Nurse Plant		Arizona State University
140	Steiner, Frederick	Evaluating Impacts of Urbanization on the Sonoran Desert Ecosystem		Arizona State University
141	Stewart, Doug	The Quest to Quench		National Wildlife Federation
142	Stolte, Daniel	Rain Gods in a Desert Sea: New Book Celebrates Southern Arizona's Mountains	UANews	The University of Arizona
143	Talton, Jon	Phoenix 101: The fifties	Rogue Columnist	
144	Taylor, Alan	Human Landscapes of the American Southwest	The Atlantic	
145	The Associated Press	Arizona's painted gravel yards fading into history		
146	Traynor, Kirsten	Desert Microbes	Ask a Biologist	Arizona State University
147	Trimble, Stephen	The People: Indians of the American Southwest	The People: Indians of the American Southwest	School of American Research Press

05 Research References

Desert Discovery Center Project
Research References (as of 5.19.17)

	A	B	F	G
148	Trimble, Stephen	The O'ogham: the Sand Papago, the Tohono O'ogham, the Ak-Chin, and the Pima	The People: Indians of the American Southwest	
149	Turner, Nancy J.	At the Desert's Green Edge: An Ethnobotany of the Gila River Pima (Book Review)	Journal of Ethnobiography, Vol. 18, No. 1	
150	Turner, Raymond, Robert Webb, Janice Bowers, and James Rodney Hastings	The Changing Mile Revisited: An Ecological Study of Vegetation Change with Time in the Lower Mile of an Arid and Semiarid Region		The University of Arizona
151	Turney, Dr. Omar A.	Prehistoric Irrigation Canals		
152	Van Devender, Thomas R.	The Deep History of the Sonoran Desert	A Natural History of the Sonoran Desert	Arizona-Sonora Desert Museum
153	VanSomeran, Lindsay	Desert Scrub Biome		Untamed Science
154	Vera, Stephanie	Nature's Balancing Act	Ask a Biologist	Arizona State University
155	Wang, Tristan	The Secret Life of Plants	Harvard Science Review	
156	Warren, Norma J.	A Closer Look at Petroglyphs and Their Meanings	Sonoran Desert Detectives	
157	Webb, Robert H., et al.	Davidson Canyon	The Changing Mile Revisited: An Ecological Study of Vegetation Change with Time in the Lower Mile of an Arid and Semiarid Region	The University of Arizona Press
158	Webb, Robert H., et al.	Monkey Spring	The Changing Mile Revisited: An Ecological Study of Vegetation Change with Time in the Lower Mile of an Arid and Semiarid Region	The University of Arizona Press
159	Webb, Robert H., et al.	Saguaro National Park	The Changing Mile Revisited: An Ecological Study of Vegetation Change with Time in the Lower Mile of an Arid and Semiarid Region	The University of Arizona Press
160	Webb, Robert H., et al.	SNP, Saguaro to Prickly Pear	The Changing Mile Revisited: An Ecological Study of Vegetation Change with Time in the Lower Mile of an Arid and Semiarid Region	The University of Arizona Press
161	West, Paul	Night Sounds of the Desert	The New York Times	The New York Times Company
162	Wilson, Tina	Secrets of Desert Plants		Arizona State University School of Life Sciences
163	Wines, Michael	Arizona Cities Could Face Cutbacks in Water From Colorado River, Officials Say	The New York Times	
164	Wright, Aaron M.	Religion on the Rocks: Hohokam Rock Art, Ritual Practice, and Social Transformation		The University of Utah Press
165	Zazzera, Joe	Biomimicry: the Emulation of Nature's Genius	Green Living AZ	Greenlivingaz, Inc.
166		Adapting to Desert Living		National Park Service
167		Tending the Wild		KCET
168		Climate Change in the Sonoran Desert		National Park Service

05 Research References

Desert Discovery Center Project
Research References (as of 5.19.17)

	A	B	F	G
		Desert Animal Survival: Adaptations of Desert Animals		Desert USA
169		Gila Monster MP3		Arizona-Sonora Desert Museum
170		Western Diamondback mp3		Arizona-Sonora Desert Museum
171		Radiative Cooling		Wikipedia
172		Radiation Cooling		Hong Kong Observatory
173		Nature's Toolbox: Biodiversity, Art & Invention		Art Works for change
174		Sonoran Desert		Center for Biological Diversity
175		Who Follows the Nectar Trail? Migratory Pollinators		Journey North
176		Arizona Habitats - Arizona HabiMap		The Arizona Experience
177		Desert Ecology presented by the McDowell Sonoran Field Institute		McDowell Sonoran Conservancy
178		Sonoran Desert Region		Arizona-Sonora Desert Museum
179		The Geology of Deserts		Geologyclass.org
180		Regional Natural History and Image Galleries		Arizona-Sonora Desert Museum
181		Deserts of North America: Pre- & Post-visit Materials		The Living Desert
182		Zack Rabbit & Lenny Lizard's Guide to Desert Wash Safety		Tuscan Department of Transportation
183		Tonto National Forest		United States Department of Agriculture Forest Service
184		How Natural Infrastructure Supports Water Security		World Resources Institute
185		Heather Tallis - CBD 2.0 and 2050 Vision Analysis Overview		The Nature Conservancy
186		Josh Goldstein - Global Situation Analysis		The Nature Conservancy
187		Climate Change Impacts in the United States	US National Climate Assessment	US Global Changed Research Program
188		What Are Climate and Climate Change?		NASA
189				

05 Research References

Desert Discovery Center Project
Research References (as of 5.19.17)

	A	B	F	G
190		The Breathing Earth Climate Change Data Visualization #EarthToParis		Good Magazine
191		Climate Change and the Sonoran Desert Region		Defenders of Wildlife
192		Sparks of Hope in 2016: 12 signs of progress in a challenging year around the world	Global Solutions	The Nature Conservancy
193		Encyclopedic Entry: Desert	National Geographic	National Geographic Society
194		Building the Future of Education: Museums and the Learning Ecosystem		Center for the Future of Museums (AAM)
195		Citizen Science News & Updates		McDowell Sonoran Conservancy
196		Cloud Song Design: A Compilation of Indigenous Native Stories Resonating in Design Content		Architekton
197		Serving our Native American Students & Communities; Science, Technology, Arts and Math (STeAM); Adults in Career Transition (ACT) Scholarship		Scottsdale Community College
198		The Indigenous Scholars Institute at Scottsdale Community College: Honoring the Past; Embracing the Present; Investing the Future		Scottsdale Community College
199		A Citizen Science Survey of the Herpetofauna of Scottsdale's McDowell Sonoran Preserve, Arizona, USA	Herpetological Review	
200		Agisoft PhotoScan Processing Report		
201		Basic Data for Samples Collected from Fraesfield and Paraiso Quartz Vein Sites.		
202		The Field Institute Insider	The Field Institute Insider	McDowell Sonoran Conservancy
203		Mountain Lines Magazine	Mountain Lines Magazine	
204		Educational Resources		McDowell Sonoran Conservancy
205		August 2016 Patrol Program Update		McDowell Sonoran Conservancy
206		The Flora and Fauna of Scottsdale's McDowell Sonoran Preserve		McDowell Sonoran Conservancy
207		If Rocks Could Talk... Presented by the McDowell Sonoran Field Institute		The McDowell Sonoran Conservancy
208		Preserve Geology Summary		
209		GeoHistory of the Valley of the Sun and the Superstition Mountains		Gemland
210		What are Petroglyphs and Who Made Them?		Sonoran Desert Detectives

05 Research References

Desert Discovery Center Project
Research References (as of 5.19.17)

	A	B	F	G
211		Hohokam Canals (map)		
212		This Is Your Brain on Nature	National Geographic	
213		Guiding Concepts		Humanities for the Environment
214		Desert Cities	AzF5 Arizona Forum	
215		Looking to the Past: Ancient City Designs that Could Save Desert Cities		Postconsumers
216		The Urban Heat Island: Jeopardizing the Sustainability of Phoenix	Policy Points	Arizona Indicators
217		Urban ecology model 'needs to change'	BBC News	
218		Hohokam Canals: Prehistoric Engineering		The Arizona Experience
219		Canal System II	The Phoenix Spatial History Project	Arizona State University
220		Hohokam Canals		
221		9/11 Memorial Tribute set Celebrate 10 years of Sports Complex Bag & tie garbage and grass Nail your next interview	Scottsdale Update	City of Scottsdale
222		Tourism Industry Update	Scottsdale CVB Newsletter	Scottsdale Convention & Visitors Bureau
223		A Five Year Strategic Plan for Scottsdale		Scottsdale Hospitality & Tourism
224		Phoenix 1885 map		
225		Roosevelt Historic District History	Historic Districts Real Estate In Downtown and Central Phoenix	Historic Preservation Office of the City of Phoenix Neighborhood Services Department and Special Planning District
226		Phoenix, Arizona	Wikipedia	Wikimedia Foundation, Inc.
227		Akimel O'odham (Pima) Oos:hikbina (calendar stick)	Infinity of Nations: Art and History in the Collections of the National Museum of the American Indian	Smithsonian National Museum of the American Indian
228		Royce Manuel - Salt River Fields at Talking Stick		Experience Scottsdale
229		Part II: Experiencing U.S. Expansion: Southern Arizona	Westward Expansion: A New History	Watson institute for International Studies, Brown University
230		Biophilia Contest		Arizona State University
231		Earthship Biotecture: Radically Sustainable Buildings		

05 Research References

Desert Discovery Center Project
Research References (as of 5.19.17)

	A	B	F	G
		Rainwater Harvesting		Water Use it Wisely
232		Urban Heat Island Basics	Reducing Urban Heat Islands: Compendium of Strategies	U.S. Environmental Protection Agency
233		Impacts on the Desert		National Park Service
234		Vegetation Limits City Warming Effects		NASA Earth Observatory
235		Bioinvaders of the Sonoran Desert	Sonorensis	Arizona-Sonora Desert Museum
236		The Effects of Urbanization on Biodiversity: Interview with Myla Aronson	Your Wild Life	
237		Effects of Urbanization Extend to the Global Scale		National Science Foundation
238		Scottsdale Water named an 'Organizational Culture of the Future'	Scottsdale Independent	
239		Indian Bend Wash: Construction Complete		United States Environmental Protection Agency
240		Moving Water		The Arizona Experience
241		Managing Groundwater		The Arizona Experience
242		Water Resources & Conservation		City of Phoenix
243		Water flow to Preserve		
244		Hidden Waters - Grand Canyon in Depth		Grand Canyon NPS
245		Colorado River Water		
246		Flow Status		The Nature Conservancy
247		Lake Mead water		
248		Gila River Basin		
249		100+ Ways to Conserve Water		Water Use it Wisely
250		Groundwater Maps		City of Tucson
251		Stormwater in the Desert: A Middle School Activity Book		STORM
252				

05 Research References

Desert Discovery Center Project
Research References (as of 5.19.17)

	A	B	F	G
253		This is the image of the San Pedro River		Thinglink
254		A Natural Solution to Water Security	Global Solutions	The Nature Conservancy
255		Salt River Project (SRP)		Salt River Project (SRP)
256		Publications and Media		McDowell Sonoran Conservancy
257		Mountain Biomes		University of Arizona Geosciences
258		Migratory Pollinators Program		Arizona-Sonora Desert Museum
259		Pollinator Pathways Poster: Migration, Pollinators and Plant Identifications		Pollinator Partnership
260		Pollination Game		Colours in NanoPhotonics for the 2011 Royal Society Summer Exhibition
261		Greater Phoenix Regional Atlas: A Preview of the Region's 50-Year Future		Arizona State University
262		Learning Plant Learning: Prof. Ariel Novoplansky at TEDxJaffa		TEDx Talks
263		Deterioration of the Gila River Watershed		Pima-Maricopa Irrigation Project, Education Initiative
264		Desert Surfaces		The McDowell Sonoran Conservancy
265		Soil Types	Understanding Earth	W.H. Freeman and Company
266		Key to life in the desert: What new research reveals about the importance of soil crusts	Science Daily	
267		Desert Ecology Summary		
268		The Listen(n) Project		The Listen Project
269		Animals: The Consumers The Desert Food Chain - Part 11		Desert USA
270		Animal Fact Sheet: Gila Monster		Arizona-Sonora Desert Museum
271		Animal Fact Sheet: Merriam's Kangaroo Rat		Arizona-Sonora Desert Museum
272		Animal Fact Sheet: Tarantula		Arizona-Sonora Desert Museum
273		Animal Fact Sheet: Bark Scorpion		Arizona-Sonora Desert Museum

05 Research References

Desert Discovery Center Project
Research References (as of 5.19.17)

	A	B	F	G
274		Aggressive nightlife of the Kangaroo Rat - Attenborough - BBC		BBC Earth
275		Nature Cards: Design for Life		IDEO in collaboration with Biomimicry 3.8
276		Ant colony raids a rival nest - Natural World - Empire of the Desert Ants - BBC Two		BBC
277		The Bio/Diversity Project Manual		University of Arizona Women in Science Engineering Program Arizona-Sonora Desert Museum National Park Service
278		Sustaining Biodiversity: The Species Approach Chapter 8		
279		Sonoran Desert Ecosystem		National Park Service
280		A Hiking Adventure	Ask a Biology	Arizona State University
281		Threatened & Endangered Species Fact Sheets	Sonoran Desert Conservation Plan	Pima County, Arizona
282		The Science of Connections - Ecological Interactions		National Park Service
283		Sonoran Desert Food Web	Ecosystems and Conservation Biology	Pearson Education, Inc.
284		Distant volcanic eruptions foster saguaro cacti baby booms		Phys.org
285		The Saguaro Cactus		U.S. Department of the Interior, National Park Service, Saguaro National Park
286		Ben-Gurion University Plant Biologist Presents Research at Morris Arboretum	The Philadelphia Jewish Voice	
287		Unusual Facts about Common Plants		
288		Ecosystem Services	College of Agriculture & Natural Resources Native Plants and Ecosystem Services	Michigan State University
289		Arizona's Vegetation Communities		
290		Built for the Desert		Arizona-Sonora Desert Museum
291		Saguaro Cactus: From Life to Death		American Museum of Natural History
292		Plants can scream for help -- they just need a little help with technology!		Arapahoe SciTech
293		Patterns of Rain (from the chapter: Desert Storms)	A Natural History of the Sonoran Desert	Arizona-Sonora Desert Museum
294		Saguaro: Sentinel of the Desert (1986)		UCPIX

05 Research References

Desert Discovery Center Project
Research References (as of 5.19.17)

	A	B	F	G
		Introduction to the Sonoran Desert Soundscape		Global Soundscapes
295		Desert Washes	Yuma Proving Ground Multipurpose Installation, Diversification of Mission and Changes to Land Use Draft Range Wide EIS: Environmental Impact Statement	Gutierrez-Palmenberg, Inc.
296		Natural Infrastructure for Water Management		IUCN
297		Hohokam Canals		
298		The Future of Water in the Southwest		ASU Now
299		Center for Science and Public Policy		The Nature Conservancy
300		Arizona Basin Outlook Report		United States Department of Agriculture
301		Google Earth - Arizona Water		
302		Santa Cruz River - Arizona Map		
303		Evapotranspiration - The Water Cycle		U.S. Department of the Interior
304				

06 Research Contacts

Arizona State University

Robert Alling
Jose Anadon
Ariel Anbar
Kathleen Andereck
Anna Arici
Christopher Boone
Katherine Carefoot
Molly Cashion
Katherine Crewe
Matthew Delmont
Pierre Deviche
Kathryn Dutchin
Lindy Elkins-Tanton
Joey Esrich
Heide Fischer
Stacey Freeman
Grady Gammage
Matthew Garcia
Ferran Garcia-Pichel
Jacques Giard
Sharon Hall
Lisa Herrmann
Paul Hirt
Janet Holston
Julie Kurth
Liz Marquez
Jon Miller
Marianne Moore
Rick Naimark
Gyan Naupane
Susanne Neuer
Garth Paine
Charles Redman
Patricia Reiter
Wellington (Duke) Reiter
Steve Semken
Kelly Steele
Mark Tebau
Richard Toon
Enrique Vivoni
Abigail York
Dave White
Ruth Wylie

Arizona Game and Fish

Randy Babb

Audubon Arizona

Sonia Perillo

City of Scottsdale

Gary Meyer
Kroy Ekblaw
Erin Walsh

City of Scottsdale Water Campus

Dave Mansfield (retired)
Art Nunez

Experience Scottsdale

Rachel Sacco
Kelli Blubaum
Rachel Pearson
Caroline Stoeckel

Fingerpaint

Michelle Olson
Linda Obele

Hospitality Industry

Doug Heaton
Ren Hirose

McDowell Sonoran Conservancy & Field Institute

Lynne Russell
Rich Cochran
Helen Rowe
Melanie Tluczek

Museum of Northern Arizona

Robert Breunig

Salt River Pima-Maricopa Indian Community

Kelly Washington
Shane Anton
Angela Garcia-Lewis
Martha Martinez
Debra Norris

Salt River Project

Lori Singleton

Scottsdale Community College

John Weser
Barbara Reinert

Scottsdale Public Art

Donna Isaac

Terrapin Bright Green

Bill Browning
Jonce Walker

The Nature Conservancy

Patrick Graham
Dale Turner

