


# Scottsdale Police Department - Uniform Crime Report (UCR)

## Annual Comparison for the City of Scottsdale

Part 1 Crimes	1994	1995	1996	1997	1998	1999	2000	2001	2002	2003	2004	2005	2006	2007	2008
Homicide	4	6	8	8	5	3	6	9	1	6	4	4	5	5	5
Forcible Rape	29	19	23	26	37	31	53	55	63	59	63	51	65	41	28
Robbery	138	138	133	126	133	126	115	192	171	155	132	125	153	143	130
Agg. Assault	257	296	281	394	225	233	395	353	248	261	269	285	282	249	260
Burglary	1,878	2,076	1,786	1,731	1,779	1,670	2,332	2,651	2,786	2,315	2,087	1,869	1,721	1,523	1,488
Theft	5,684	6,627	6,455	6,760	6,470	5,469	5,230	5,231	5,487	5,659	5,593	4,703	5,476	5,863	5,897
Auto Theft	1,306	1,655	1,051	1,142	1,286	1,057	1,170	1,368	1,378	1,501	1,318	1,161	1,118	752	518
Arson	32	45	53	45	62	67	30	53	53	57	32	30	50	31	31
<b>Totals:</b>	9,328	10,862	9,790	10,232	9,997	8,656	9,331	9,912	10,187	10,013	9,498	8,228	8,870	8,607	8,357
<b>Population</b>	159,650	168,960	176,240	184,550	193,250	201,050	208,050	213,430	217,130	220,860	224,230	235,720	238,900	241,750	243,050
<b>Index Per 1,000</b>	58.4	64.3	55.5	55.4	51.7	43.1	44.8	46.4	46.9	45.3	42.4	34.9	37.1	35.6	34.4

 = Est. Population from COS Planning

 = Special Census Conducted in 2005 Qtr 3

CLEARANCE RATES									
Part 1 Crimes	2000	2001	2002	2003	2004	2005	2006	2007	2008
Homicide	63%	33%	100%	100%	100%	100%	100%	100%	140%
Forcible Rape	28%	36%	40%	44%	60%	63%	40%	85%	79%
Robbery	18%	30%	42%	53%	58%	53%	33%	36%	42%
Agg. Assault	64%	72%	71%	84%	72%	73%	58%	67%	77%
Burglary	3%	4%	6%	15%	10%	8%	9%	9%	10%
Theft	8%	13%	15%	16%	17%	16%	14%	15%	17%
Auto Theft	11%	11%	16%	21%	17%	17%	14%	19%	17%
Arson	7%	11%	2%	7%	9%	20%	10%	6%	17%

% of cases cleared by arrest or exceptional means.

# Scottsdale Police Department

## UCR Juvenile Arrest Register

Offense Type	Gender	2002	2003	2004	2005	2006	2007	2008
Criminal Homicide	M	0	0	0	1	0	0	0
	F	0	0	0	0	0	0	0
Forcible Rape	M	0	0	0	1	0	3	0
	F	0	0	1	0	0	0	0
Robbery	M	9	9	6	7	7	10	10
	F	1	1	0	1	1	0	0
Aggravated Assault	M	11	20	11	18	16	14	17
	F	3	7	0	2	1	3	7
Burglary	M	38	38	37	18	19	23	21
	F	6	1	8	1	2	2	1
Theft	M	96	77	86	77	67	120	141
	F	45	58	97	47	72	84	96
Motor Vehicle Theft	M	24	8	13	17	12	1	4
	F	6	3	2	5	3	0	1
Other Assault	M	72	79	92	67	73	74	89
	F	40	45	44	29	37	51	57
Arson	M	3	3	6	7	1	0	4
	F	0	2	0	1	0	0	0
Forgery and Counterfeiting	M	2	3	4	2	6	1	2
	F	0	1	1	0	1	0	2
Fraud	M	1	3	0	0	0	2	2
	F	0	1	0	0	0	2	3
Embezzlement	M	0	0	0	0	1	0	0
	F	0	0	1	0	0	0	0
Stolen Prop (Buying, Receiving Possessing)	M	5	13	8	7	6	9	5
	F	7	1	2	5	1	3	2
Vandalism	M	47	55	65	32	36	44	72
	F	8	10	5	6	3	12	9
Weapons; Carrying, Possessing	M	10	5	7	3	3	1	7
	F	1	0	0	1	1	0	0
Prostitution/commercialized vice	M	0	0	0	0	0	0	0
	F	0	0	0	0	0	0	0
Sex offenses (except forcible rape)	M	5	7	5	5	3	9	3
	F	1	0	0	0	0	0	0
Drug Abuse Violations	M	88	104	86	88	108	114	155
	F	24	12	28	17	34	33	44
Gambling	M	0	0	0	0	0	0	0
	F	0	0	0	0	0	0	0
Offenses against family and children	M	0	0	0	0	0	0	0
	F	0	0	0	0	0	0	0
Driving under the influence	M	9	10	18	13	16	15	19
	F	3	7	6	3	6	9	8
Liquor Laws	M	85	77	122	86	136	146	158
	F	57	45	65	40	13	116	120
Drunkenness	M	0	0	0	0	0	0	0
	F	0	0	0	0	0	0	0
Disorderly conduct/False ID	M	26	23	26	28	22	44	62
	F	10	7	7	8	9	9	12
Vagrancy	M	0	0	0	0	1	0	1
	F	0	0	0	0	0	0	0
All other offenses (except traffic)	M	97	93	153	137	179	197	204
	F	28	22	50	57	98	98	93
Suspicion	M	0	0	0	0	0	0	0
	F	0	0	0	0	0	0	0
Curfew and Loitering law violations	M	2	1	53	84	17	79	82
	F	1	0	28	24	7	35	58
Runaways	M	1	0	0	0	0	19	7
	F	2	1	0	0	0	30	11
<b>Total Male</b>		<b>631</b>	<b>628</b>	<b>798</b>	<b>698</b>	<b>729</b>	<b>925</b>	<b>1065</b>
<b>Total Female</b>		<b>243</b>	<b>224</b>	<b>345</b>	<b>247</b>	<b>289</b>	<b>487</b>	<b>524</b>
<b>Total</b>		<b>874</b>	<b>852</b>	<b>1143</b>	<b>945</b>	<b>1018</b>	<b>1412</b>	<b>1589</b>

# Scottsdale Police Department

UCR Adult Arrest Register								
Offense Type	Gender	2002	2003	2004	2005	2006	2007	2008
Criminal Homicide	M	3	1	6	3	3	12	5
	F	0	0	0	1	0	1	1
Forcible Rape	M	17	5	13	3	9	17	2
	F	0	0	1	1	0	0	0
Robbery	M	44	53	64	58	27	46	35
	F	9	11	19	10	3	3	4
Aggravated Assault	M	85	92	97	92	107	87	93
	F	19	14	14	18	3	15	23
Burglary	M	153	187	235	199	107	63	73
	F	19	42	52	56	16	3	17
Theft	M	328	266	289	324	316	391	436
	F	182	120	198	157	163	211	258
Motor Vehicle Theft	M	51	40	221	40	51	39	24
	F	12	7	8	8	9	8	11
Other Assault	M	473	502	443	367	511	559	496
	F	126	141	140	110	176	165	163
Arson	M	0	0	0	2	1	0	0
	F	0	0	0	0	2	0	0
Forgery and Counterfeiting	M	56	65	54	75	71	99	121
	F	46	40	42	29	36	38	60
Fraud	M	84	82	89	106	67	104	102
	F	67	43	78	77	28	54	46
Embezzlement	M	3	7	7	6	2	3	6
	F	4	4	2	2	1	7	8
Stolen Prop (Buying, Rec'ing, Possessing)	M	97	96	83	71	67	70	49
	F	18	17	20	20	10	12	27
Vandalism	M	125	105	151	136	154	227	193
	F	28	17	26	31	45	61	56
Weapons; Carrying, Possessing	M	32	27	38	33	83	80	107
	F	1	1	2	5	3	9	10
Prostitution/commercialized vice	M	2	3	1	2	0	7	8
	F	3	22	20	5	3	14	13
Sex offenses (except rape)	M	28	41	30	44	9	32	25
	F	1	1	6	2	0	1	1
Drug Abuse violations	M	481	548	551	593	847	792	817
	F	133	138	149	154	250	249	234
Gambling	M	1	0	0	1	0	0	5
	F	0	0	0	0	0	0	1
Offenses against family and children	M	0	3	1	1	2	1	0
	F	0	0	0	0	0	0	0
Driving under the influence	M	1170	1412	1750	1650	1479	1626	1600
	F	414	512	699	576	578	655	702
Liquor Laws	M	514	454	571	491	430	592	714
	F	149	182	238	161	142	228	277
Drunkenness	M	0	0	0	0	0	0	0
	F	0	0	0	0	0	0	0
Disorderly conduct/False ID	M	177	179	162	156	251	335	393
	F	40	37	30	42	59	104	83
Vagrancy	M	0	0	0	0	33	27	59
	F	0	0	0	0	5	5	1
All other offenses (except traffic)	M	1909	1761	1887	1961	1806	2259	2454
	F	465	381	469	516	422	654	662
Suspicion	M	0	0	1	0	0	0	0
	F	0	0	0	0	0	0	0
<b>TOTAL MALE</b>		<b>5833</b>	<b>5929</b>	<b>6744</b>	<b>6414</b>	<b>6433</b>	<b>7468</b>	<b>7817</b>
<b>TOTAL FEMALE</b>		<b>1736</b>	<b>1730</b>	<b>2213</b>	<b>1981</b>	<b>1954</b>	<b>2497</b>	<b>2658</b>
<b>TOTAL</b>		<b>7569</b>	<b>7659</b>	<b>8957</b>	<b>8395</b>	<b>8387</b>	<b>9965</b>	<b>10475</b>

# Scottsdale Police Department

## 2008 UCR Analysis

### UCR Part 1 Crime Analysis

#### Crimes Against Persons

Incident Type	2003	2004	2005	2006	2007	5 Yr Avg	Normal Activity Range	2008	% Chg From 2007	% Chg From 5 Yr Avg	Current Activity Level Compared to Historical Activity Levels
Criminal Homicide	6	4	4	5	5	5	4 to 6	5	0.0%	4.2%	
Forcible Rape	59	63	51	65	41	56	47 to 65	28	-31.7%	-49.8%	
Robbery	155	132	125	153	143	142	130 to 153	130	-9.1%	-8.2%	
Agg Assault	261	269	285	282	249	269	256 to 283	260	4.4%	-3.4%	
<b>Total Person Crimes</b>	<b>481</b>	<b>468</b>	<b>465</b>	<b>505</b>	<b>438</b>	<b>471</b>	<b>450 to 493</b>	<b>423</b>	<b>-3.4%</b>	<b>-10.3%</b>	

#### Crimes Against Property

Burglary	2315	2087	1869	1721	1523	1903	1626 to 2180	1488	-2.3%	-21.8%	
Larceny-Theft	5659	5593	4703	5476	5863	5459	5061 to 5857	5897	0.6%	8.0%	
Motor Veh Theft	1501	1318	1161	1118	752	1170	921 to 1419	518	-31.1%	-55.7%	
Arson	57	32	30	50	31	40	29 to 51	31	0.0%	-22.5%	
<b>Total Property Crimes</b>	<b>9532</b>	<b>9030</b>	<b>7763</b>	<b>8365</b>	<b>8169</b>	<b>8572</b>	<b>7941 to 9203</b>	<b>7934</b>	<b>-2.9%</b>	<b>-7.4%</b>	

### Larceny-Theft Analysis

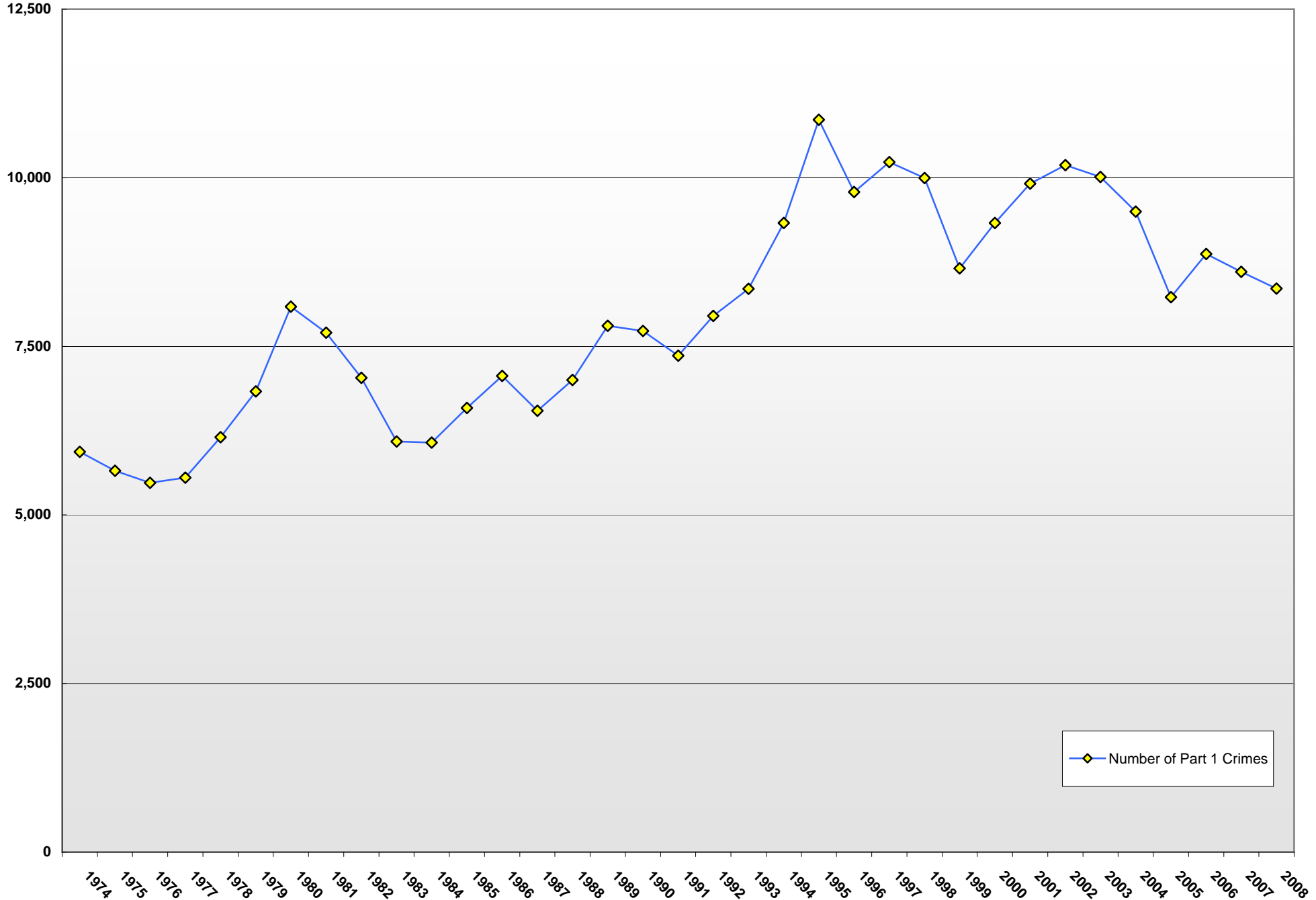
Incident Type	2003	2004	2005	2006	2007	5 Yr Avg	Normal Activity Range	2008	% Chg From 2007	% Chg From 5 Yr Avg	Current Activity Level Compared to Historical Activity Levels
Pocket Picking	5	2	7	68	28	26	1 to 51	37	32.1%	41.0%	
Purse Snatching	3	4	0	54	7	16	-4 to 37	13	85.7%	-20.0%	
Shoplifting	991	944	711	783	992	858	742 to 973	1117	12.6%	30.3%	
From Vehicle/Parts	3012	2864	2283	2577	2463	2547	2282 to 2812	2415	-1.9%	-5.2%	
Bicycles	128	143	162	85	89	120	90 to 150	107	20.2%	-10.6%	
From Building	564	830	774	624	894	781	656 to 905	824	-7.8%	5.6%	
From Coin-Op Machine	3	4	3	6	47	15	-2 to 32	33	-29.8%	120.0%	
All Other	953	802	763	1279	1343	1047	806 to 1287	1351	0.6%	29.1%	

#### Current Activity Analysis Legend

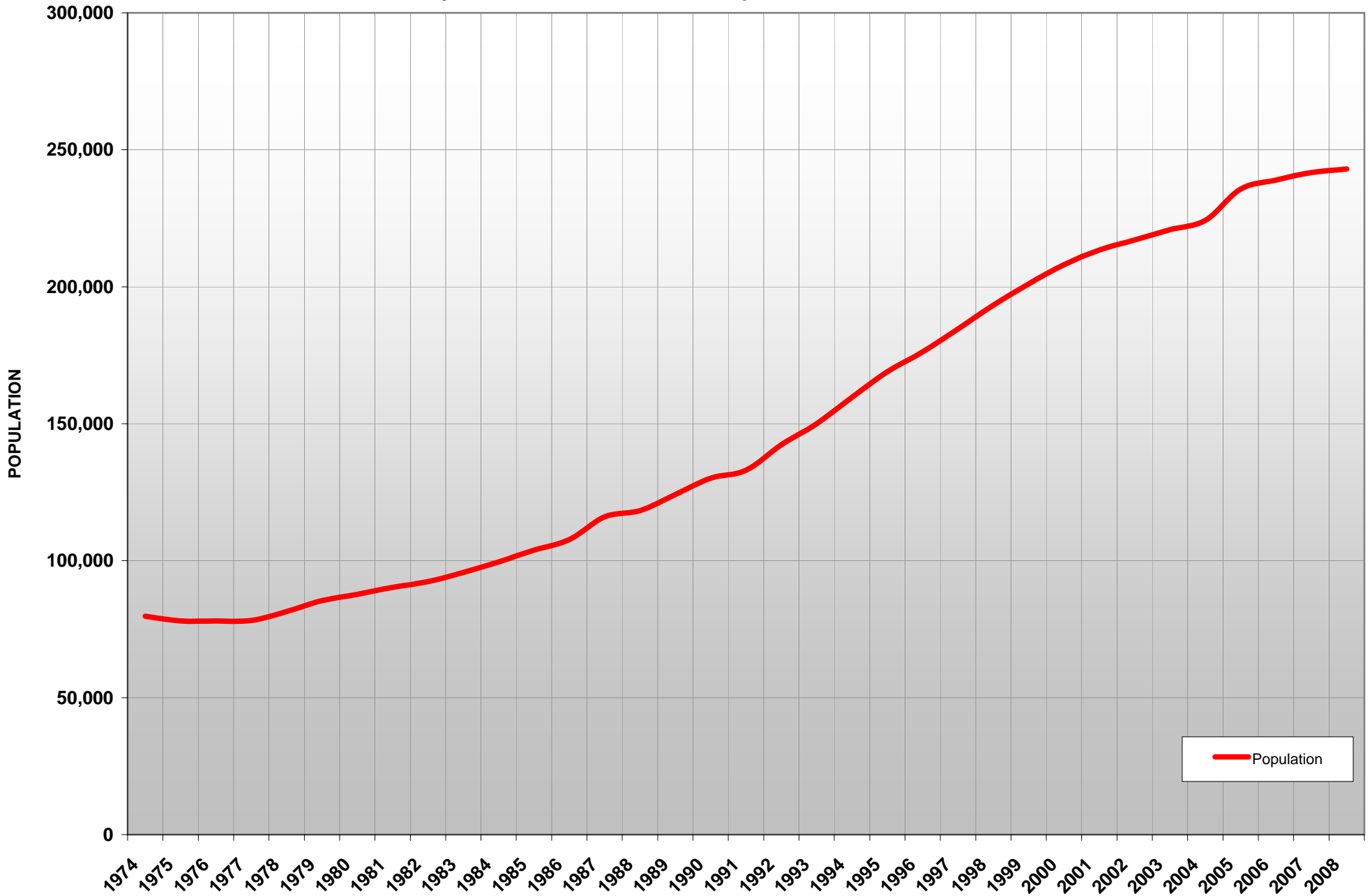


The "Current Activity Level Compared to Historical Activity Levels" field examines the statistical significance of the increase or decrease of the current year (2008) to the activity over the 5 year time period of 2003-2007 for each of the listed crime types. Please note that the "Current Activity Level Compared to Historical Activity Levels" does not examine the significance of any change between the current year (2008) and the previous year (2007).

# Scottsdale Police Department: Uniform Crime Report Part 1 Crime Volume: 1974 to 2008



# City of Scottsdale Estimated Population - 1974 to 2008

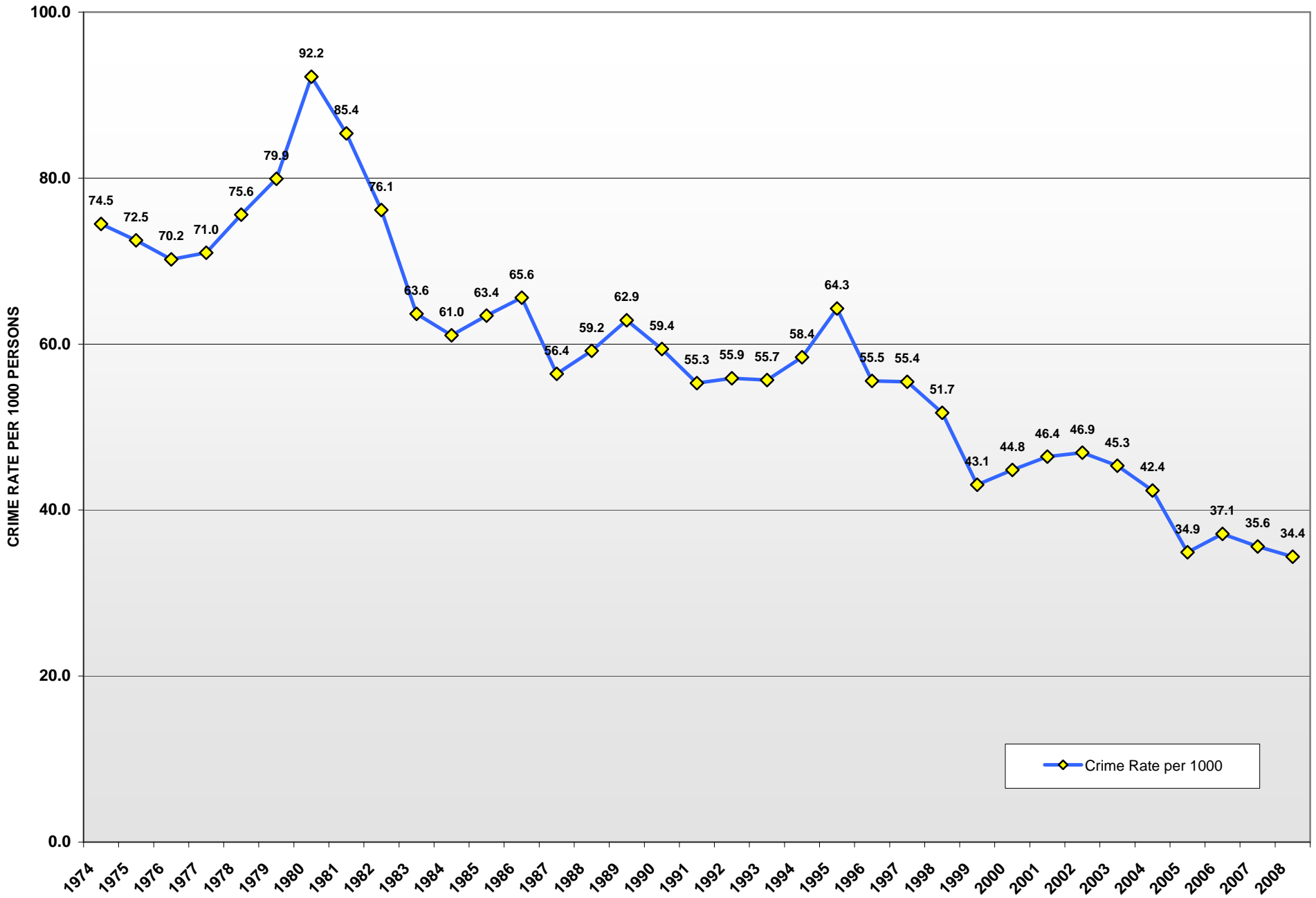


1985 to 1991 Population Data Source: Dept. of Justice Programs Website

Population figures estimates as of July 2005 (Source Harry Higgins)

\* 2005 Population estimates include special census data conducted 2005 Qtr 3.

# Scottsdale Police Department: Uniform Crime Report Part 1 Crimes Rates - 1974 to 2008



1979 to 1991 Population Data Source: Dept. of Justice CIUS  
 Arson counts are not available for 1974 to 1978 & 1985 to 1991

1974 to 1978 & 1992 to 2007 Population Data Source: City of Scottsdale Planning Dept (Harry Higgins)