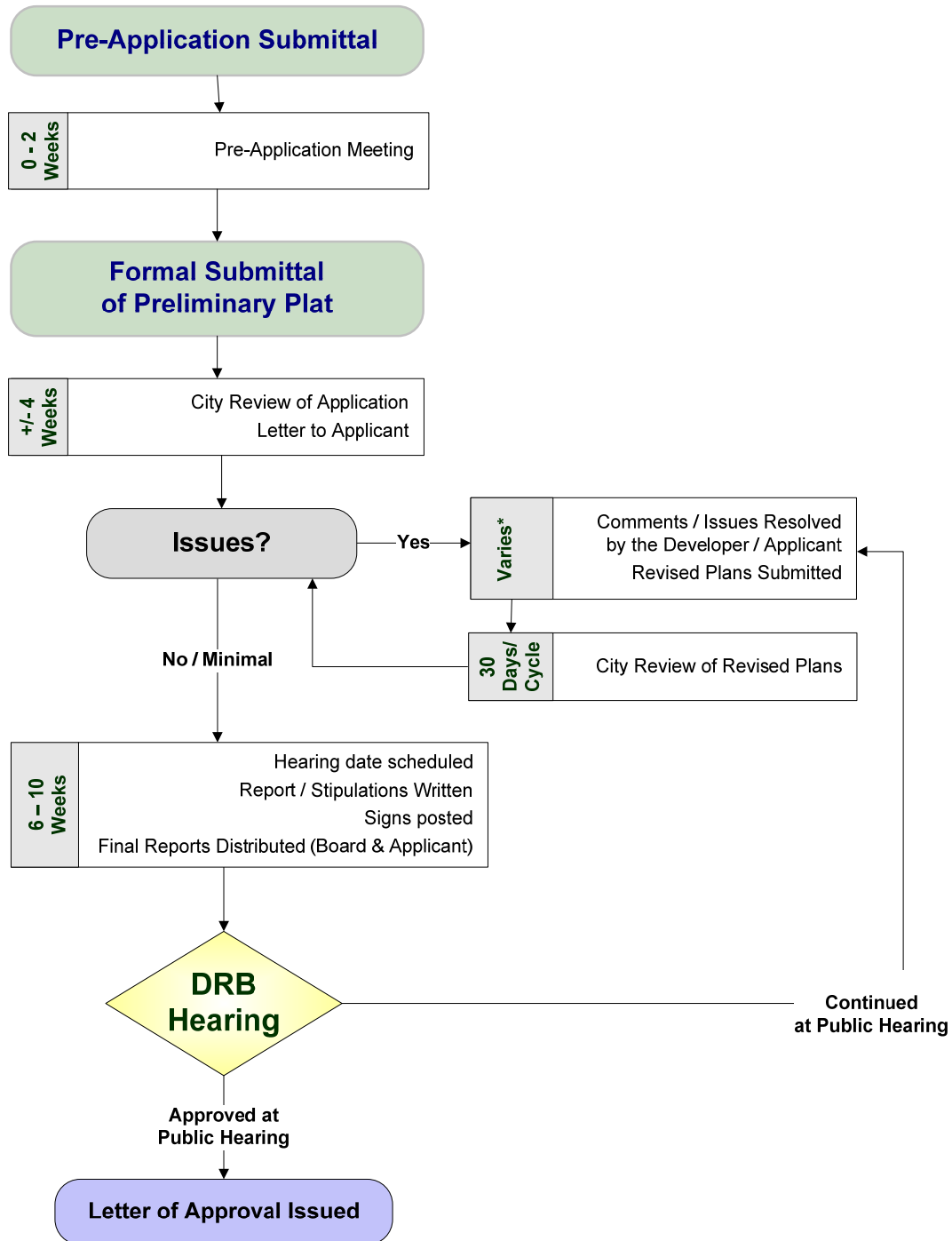




Subdivision Plat Process

Part 1 of 2 - Preliminary Plat Approval



* Time period determined by Developer / Applicant.

+Time frames are estimates and are subject to change depending on several factors such as applicant responsiveness and the complexity of the project and issues presented.

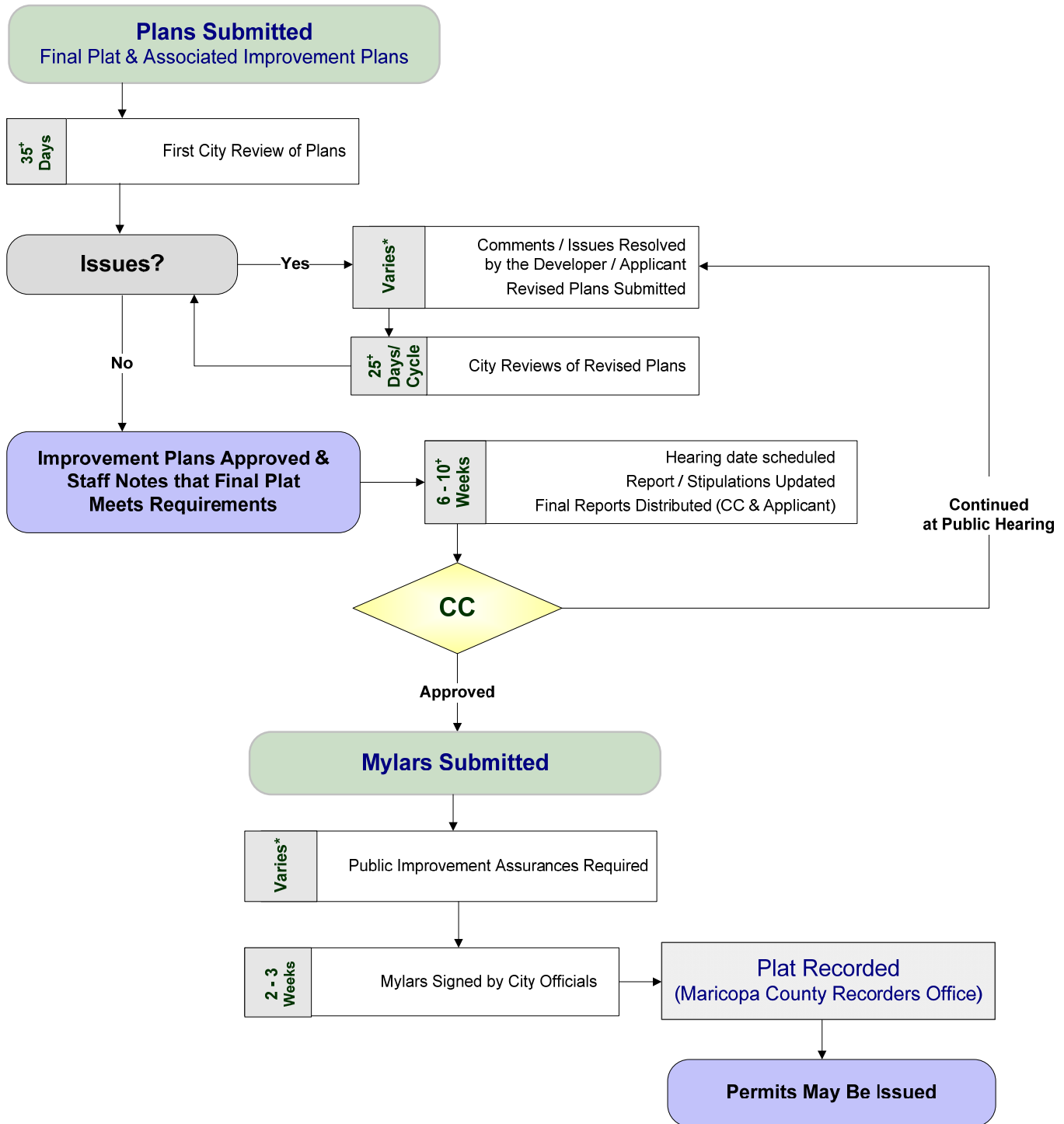
Planning & Development Services Department

7447 E Indian School Road, Ste 105, Scottsdale, AZ 85251 • Phone: 480-312-7000 • Fax: 480-312-7088



Subdivision Plat Process

Part 2 of 2 - Final Plat Approval



* Time period determined by Developer / Applicant.

+Time frames are estimates and are subject to change depending on several factors, such as applicant's responsiveness and the complexity of the project and issues presented.

Planning & Development Services Department

7447 E Indian School Road, Ste 105, Scottsdale, AZ 85251 • Phone: 480-312-7000 • Fax: 480-312-7088