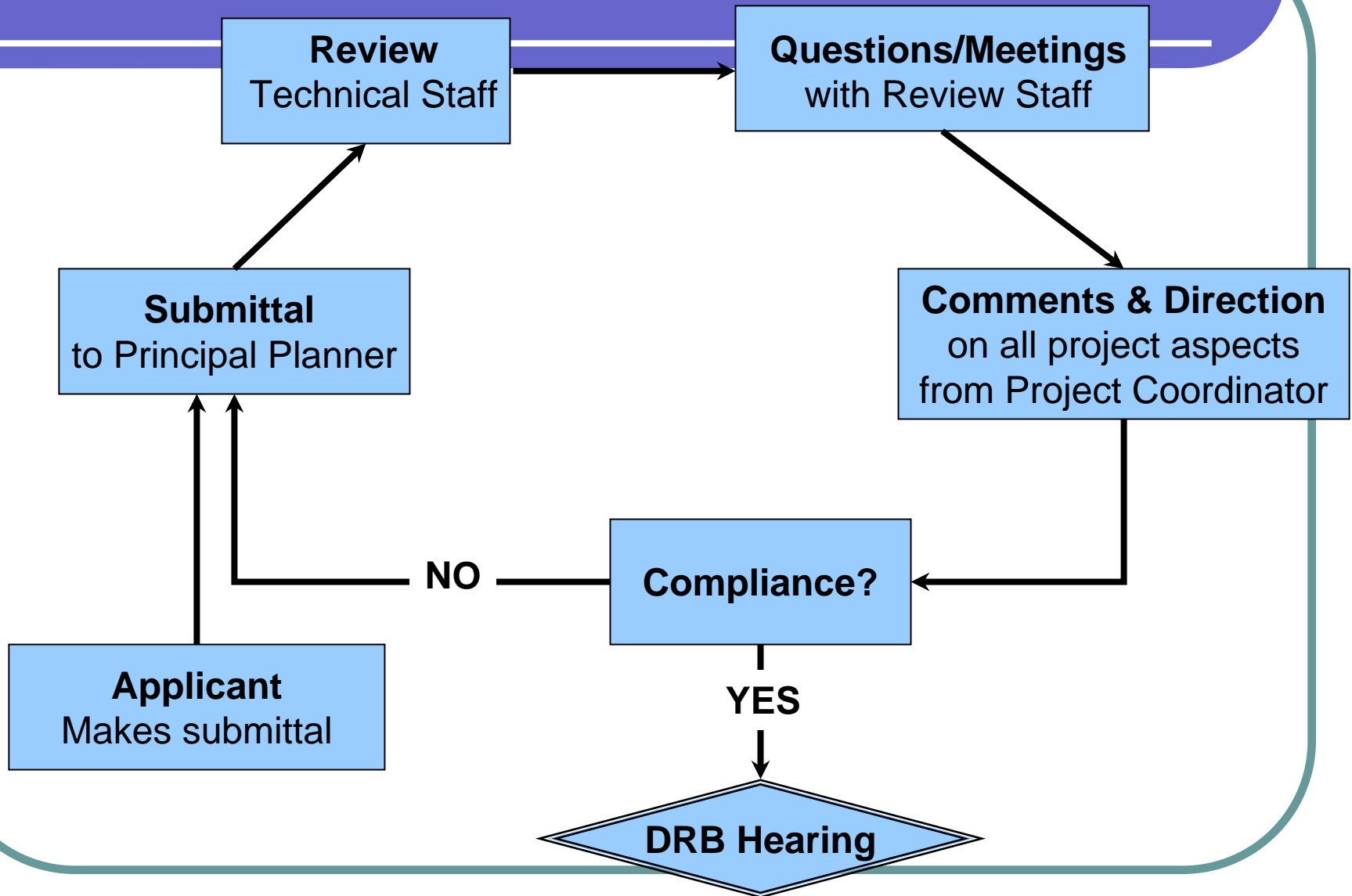


Technical Review Overview



Technical Review

Joe Morris

Plan Review

Richard Anderson
Aziz Helal
Jeri Pulkinen
Larry Lantz
Xavier Castro
Larry Tritz
Pam Fink

Case Review

Jay Das
Don Gerkin
Saeed Mohajerin

Real Estate

Pete Deeley
Dwayne Haught

All will coordinate with Departments such as Sanitation, Transportation,
Water Resources and STORMWATER MANAGEMENT

Who Reviews Drainage Reports?

- Engineering staff reviews “routine” reports
- Stormwater staff reviews:
 - Any reports when requested by engineers
 - All reports with significant modeling
 - Property within special flood hazard areas
 - Projects with potential community impact
 - Master Plans

Drainage Report Preparation

What's necessary to qualify for DRB scheduling? The report must:

- Show compliance with codes & policies:
 - Stormwater storage
 - Stormwater conveyance
 - No adverse impact on other property
 - Resolve special flood hazard area issues

Drainage Report Preparation

- Show project has a “good fit” with surrounding parcels:
 - Satisfactory comparison of pre/post development conditions
- Include explanatory text, calculations, and exhibits to confirm all of above
- The key is to perform analysis and design sufficient to establish site plan certainty.

Drainage Report Review

For DRB purposes, the review & comment cycles will identify & eliminate fatal flaws

A flaw is fatal if:

- Its resolution can significantly change a site plan
- Its implementation would increase risk of flood damage, or otherwise violate code and policy

Fatal Flaws

- Unresolved stormwater storage issues
 - Amount: full storage or waiver
 - Method: surface, underground, in-line
 - Amount of waiver fees, if applicable
- Unresolved stormwater conveyance issues
 - Magnitude of peak discharges
 - Satisfactory entry/exit points
 - Method & modeling of peak calculations
- Unresolved “adverse impact” issues
 - Change in water surface elevations
 - Diversions of flows

Example



Example



Master Drainage Reports

- Additional requirements
- Anticipate incremental completion of larger project (phasing)
 - Identify order of development
 - Assure each phase is complete and self-sustaining
 - Identify responsibility and timing of infrastructure elements