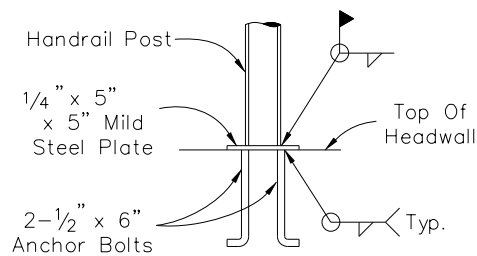
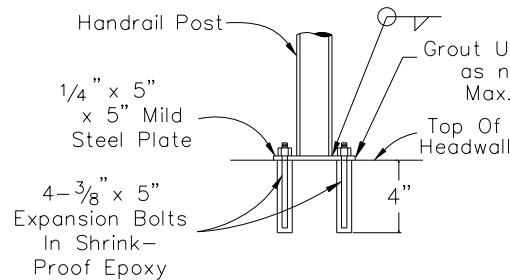


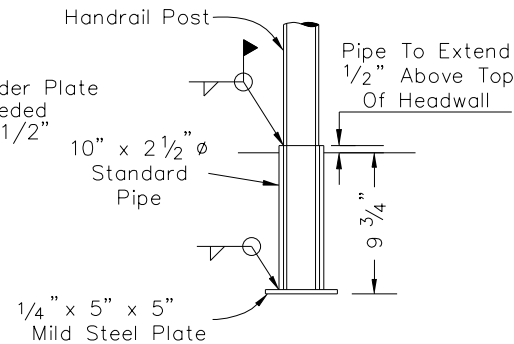
ELEVATION



TYPE 1
ANCHOR PLATE DETAIL



TYPE 2
EXPANSION BOLT DETAIL



TYPE 3
PIPE SLEEVE DETAIL

CONSTRUCTION NOTES

1. Paint handrail per MAG Specifications Section 530. Color per plans.
2. Vertical posts to be evenly spaced.

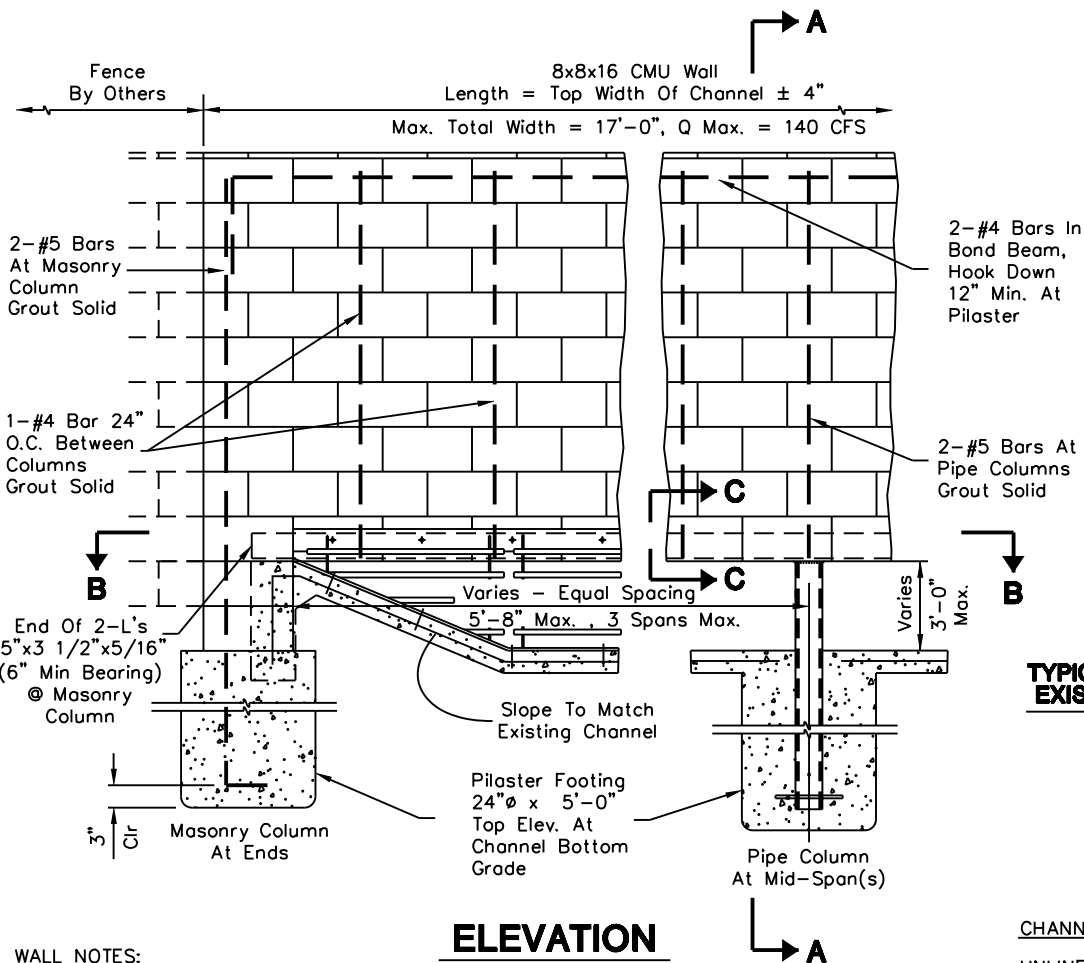
DETAIL NO.
2508

**City of Scottsdale
Standard Details**

APPROVED BY:
**Scottsdale Standards &
Specifications Committee**

HANDRAIL DETAIL

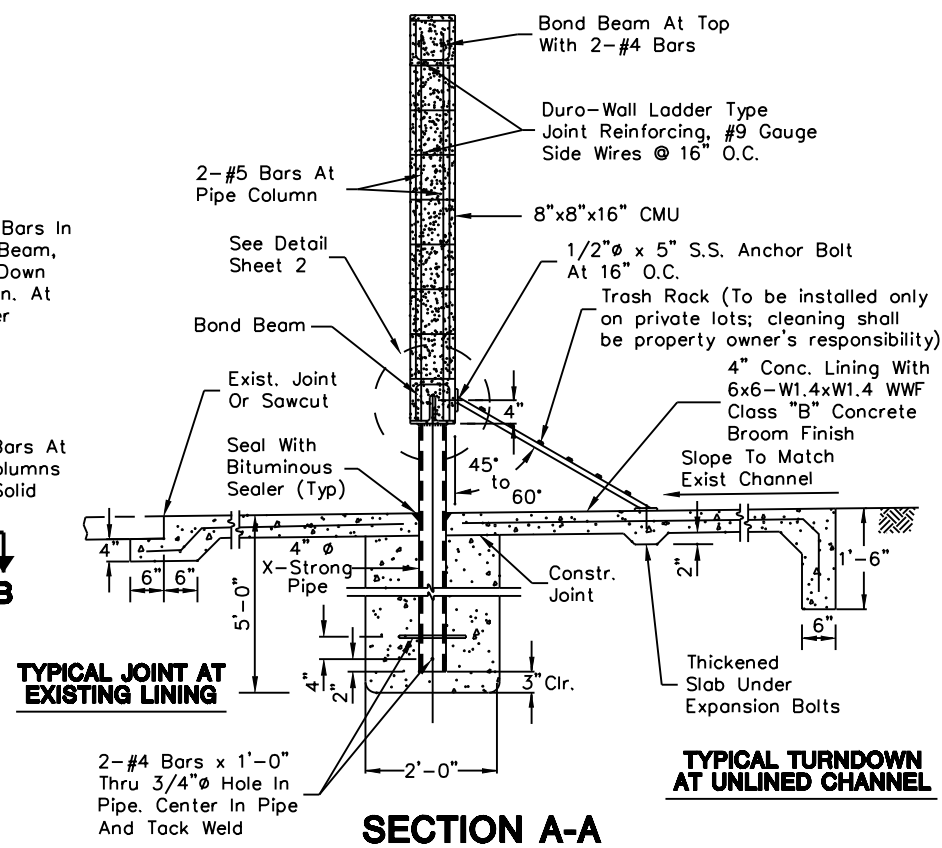
DETAIL NO.
2508



ELEVATION

WALL NOTES:

1. Wall Height, Finish Texture And Color to Match Adjacent Property Wall.
2. Construction To Conform to MAG Section 510.
3. Trash Rack Gate Required on Private Lots only; And Property Owner Shall Be Responsible for Cleaning.



CHANNEL NOTES:

UNLINED CHANNELS: Construct New Lining 6' Minimum Upstream And Downstream From Wall With Turndown At All Edges Of Lining.

EXISTING LINED CHANNELS: Remove Existing Lining 4' Minimum Upstream And Downstream From Wall. Replace Using Joint Shown.

SHEET 1 OF 3

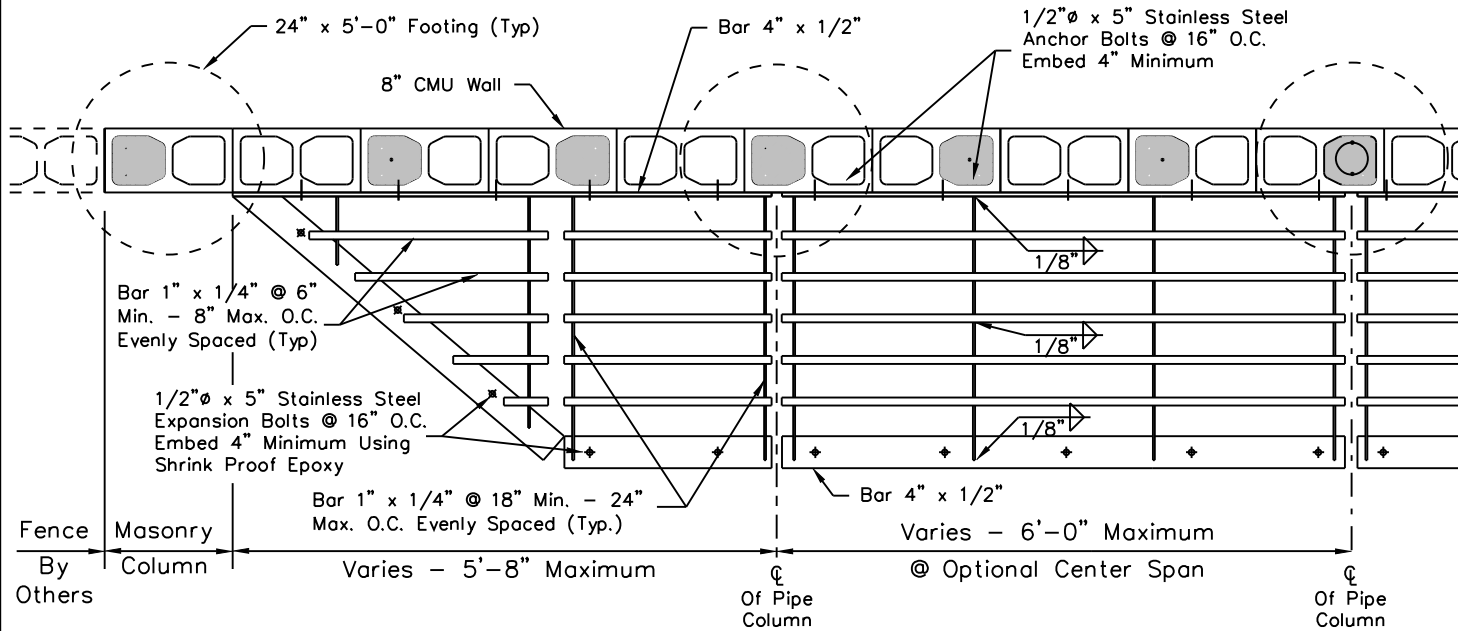
DETAIL NO.
2515-1

City of Scottsdale Standard Details

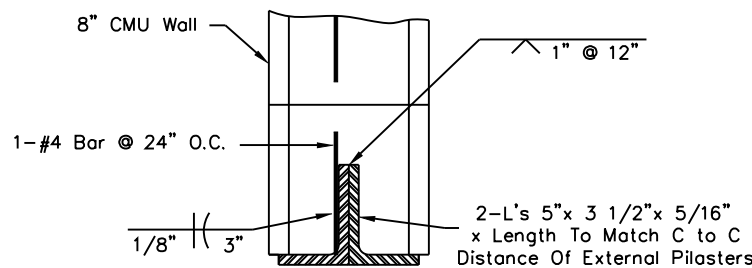
APPROVED BY:
Scottsdale Standards & Specifications Committee

WALL OPENING & EROSION PROTECTION - TYPE 1

DETAIL NO.
2515-1



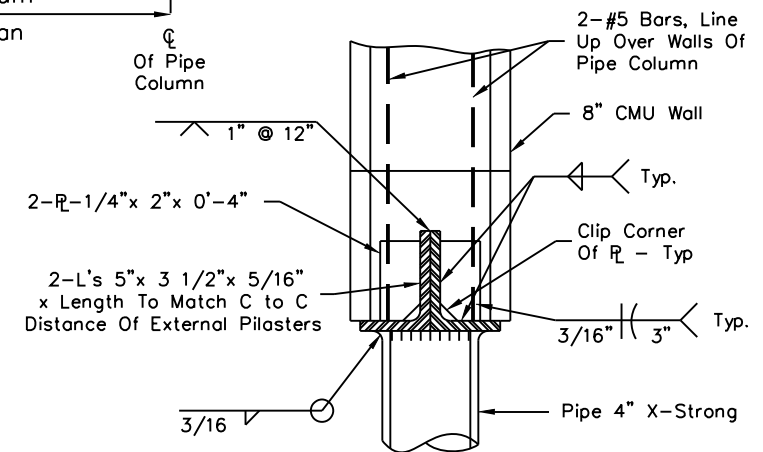
SECTION B-B



SECTION C-C

GRATE NOTES:

1. Steel Work Shall Conform To Mag Sections 515 And 770.
2. Shop Drawings Are Not Required. Contractor Shall Be Responsible For Correct Fit Between The Trash Rack, Channel And Wall As Constructed In The Field.
3. Shop Prime Steel And Touch-Up Per MAG Section 515.5. Apply A Second Coat After Erection And A Finish Coat Of Alkyd Enamel To Match Wall Finish Color.
4. Grate Required on Private Lots Only. Property Owner Responsible for Cleaning.



DETAIL AT PIPE COLUMN

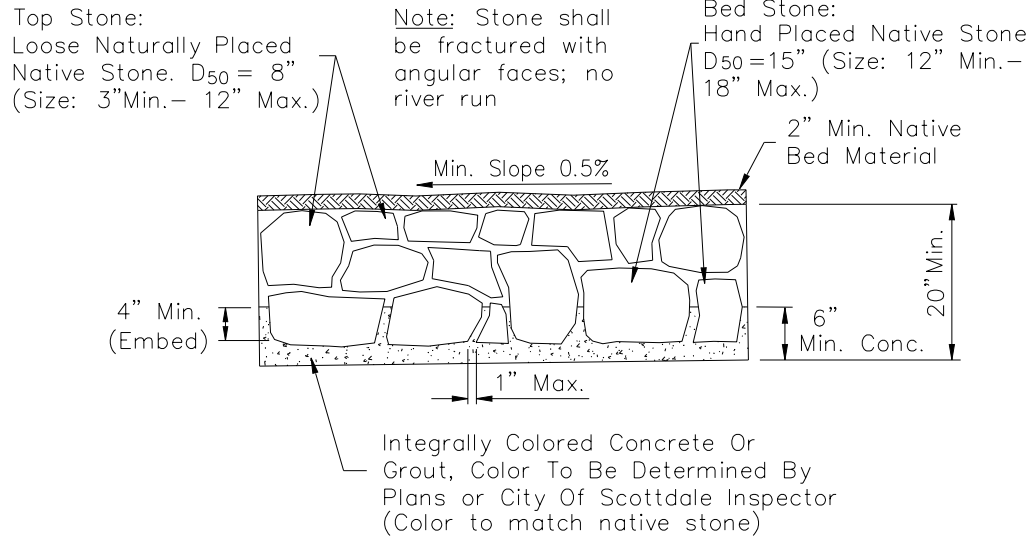
DETAIL NO.
2515-2

**City of Scottsdale
Standard Details**

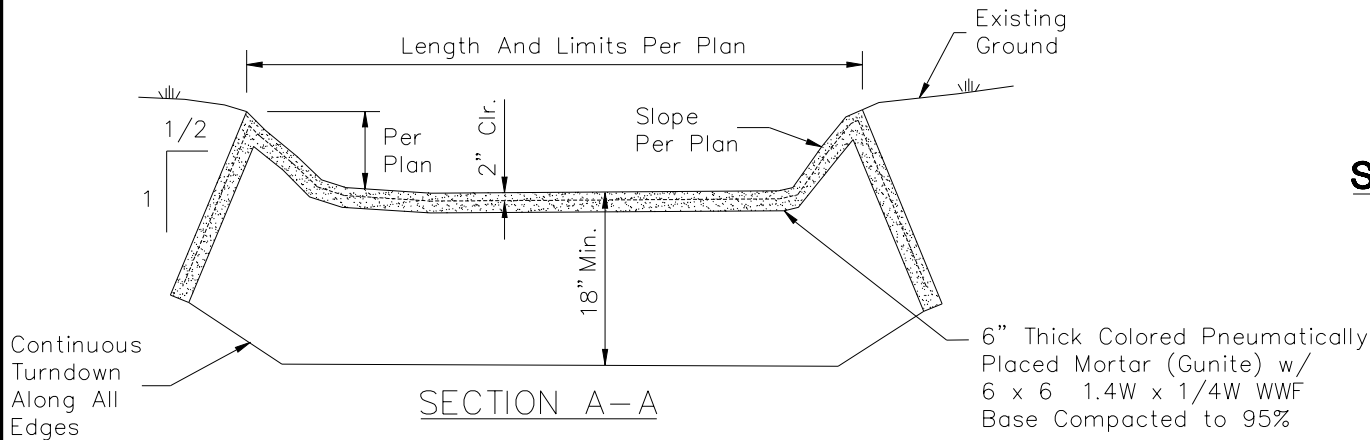
APPROVED BY:
**Scottsdale Standards &
Specifications Committee**

DRAINAGE GRATE AT BLOCK WALL

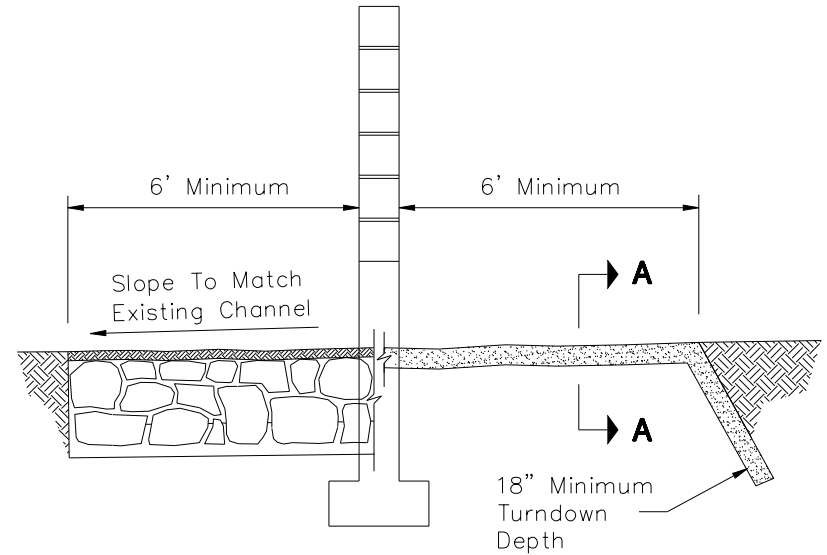
SHEET 2 OF 3
DETAIL NO.
2515-2

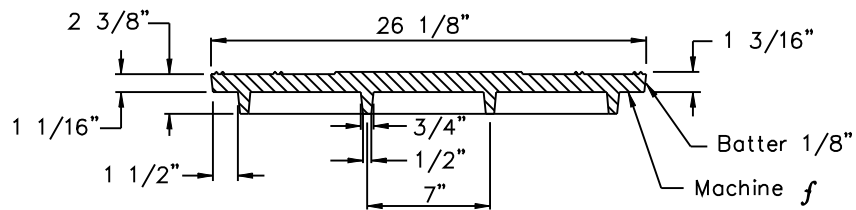
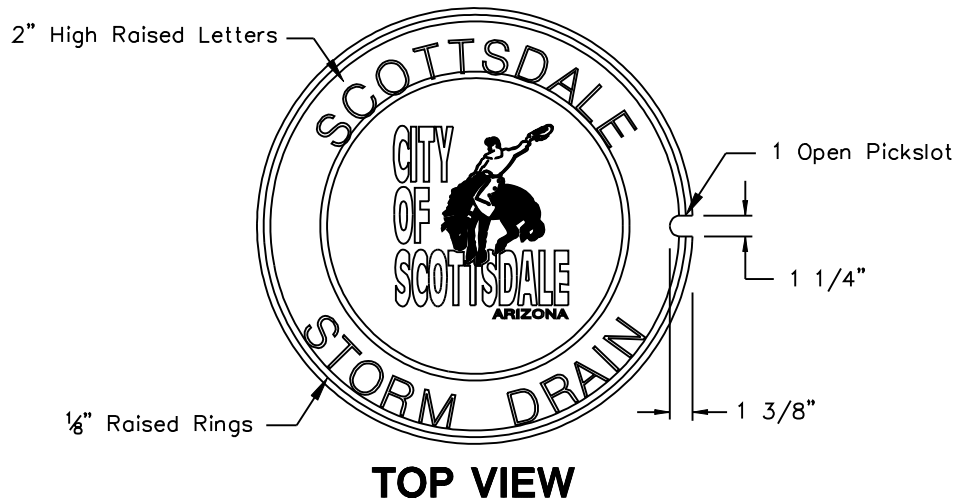


TYPE 2A - BURIED GROUTED RIP-RAP DETAIL

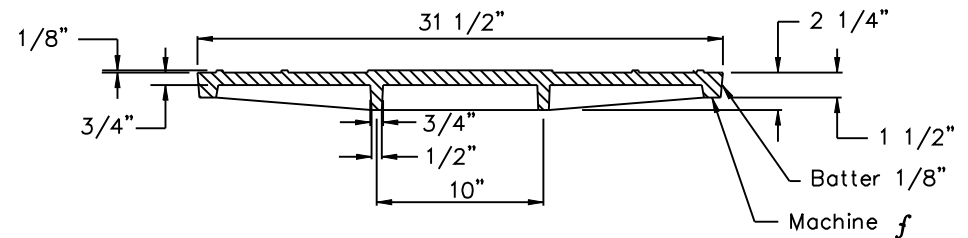
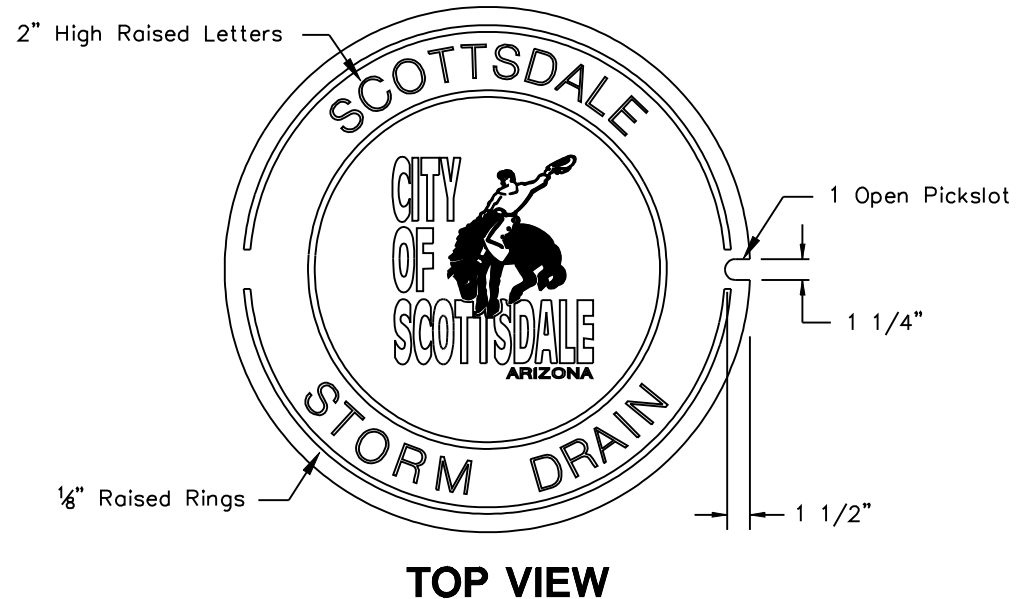


TYPE 2B - PNEUMATICALLY PLACED MORTAR DETAIL





24" MANHOLE COVER



30" MANHOLE COVER

NOTES

1. Material: Cast Gray Iron ASTM A-48, Class 35B, Unpainted
2. The Total Width Of Individual Letters To Be Such That Letters And Words Are Equally Spaced And Balanced.
3. Letters To Be 2" In Height And Raised 1/8" Above Level Of Cover. Type Of Letters To Be Submitted For Approval.
4. Weight Of Castings Shall Be No More Than 2% Less Than Weight Specified. Castings Shall Conform To M.A.G. Section 787.

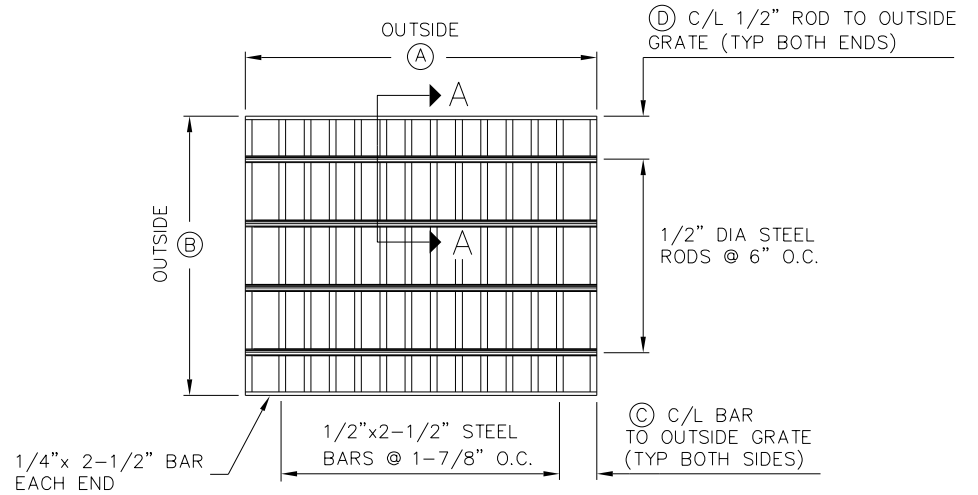
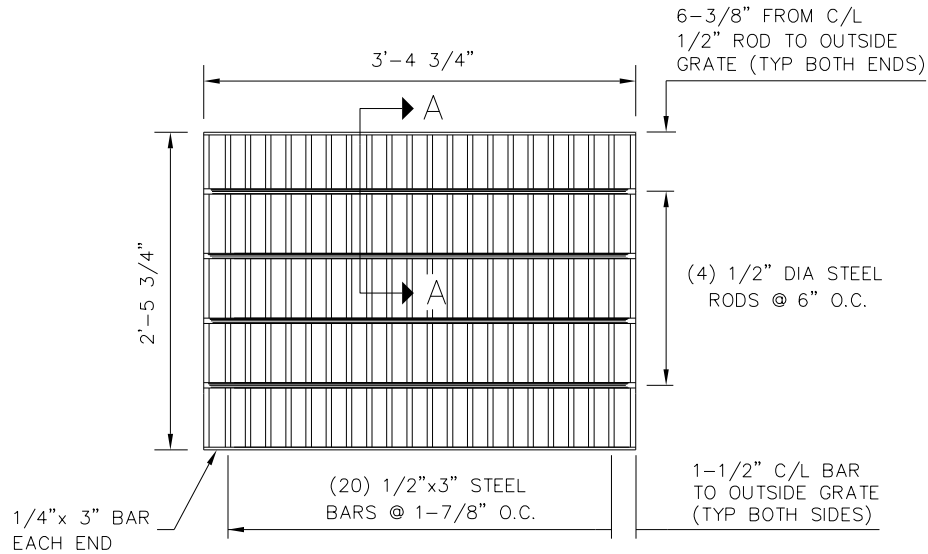
DETAIL NO.
2520

**City of Scottsdale
Standard Details**

APPROVED BY:
**Scottsdale Standards &
Specifications Committee**

STORM DRAIN MANHOLE COVER

DETAIL NO.
2520

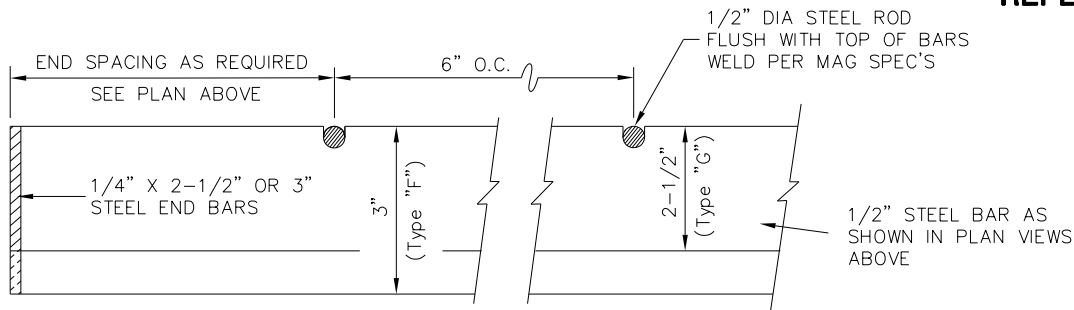


GRATE FOR TYPE "F" CATCH BASIN

REPLACES GRATE SHOWN IN MAG STD. DETAIL 535

GRATE FOR TYPE "G" & "H" CATCH BASINS

REPLACES GRATE SHOWN IN MAG STD. DETAILS 537/539



SECTION A-A

NOTES:

- ALL MATERIALS AND FABRICATION TO BE AS SPECIFIED IN MAG STANDARD DETAIL NO. 539.
- MAXIMUM TOTAL DIMENSION BETWEEN OUTSIDE OF GRATE AND INSIDE OF FRAME SHALL NOT EXCEED 3/8".
- ATTACH GRATE TO CATCH BASIN WITH EYE BOLT AND CHAIN PER MAG DETAIL NO. 537.

TYPE "G" & "H" GRATE DIMENSIONS		
	SINGLE GRATE	DOUBLE GRATE
(A)	2'-4 5/8"	4'-4 5/8"
(B)	2'-4 5/8"	2'-4 5/8"
(C)	2'-11/16"	2'-5/16"
(D)	0'-4"	0'-3 3/4"

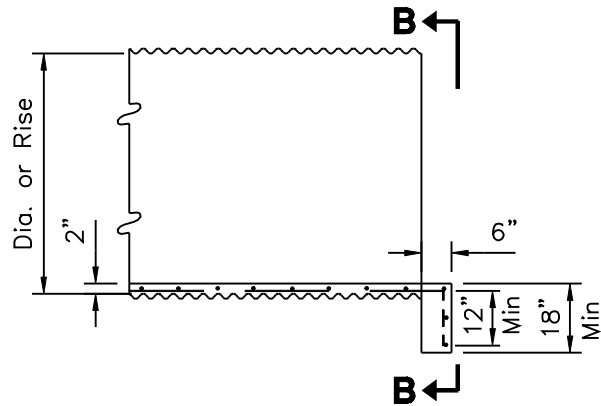
DETAIL NO.
2535

City of Scottsdale
Standard Details

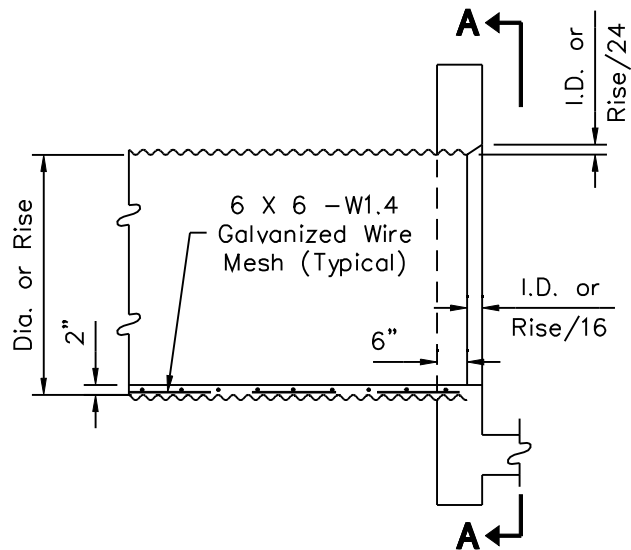
APPROVED BY:
Scottsdale Standards & Specifications Committee

CATCH BASIN GRATES

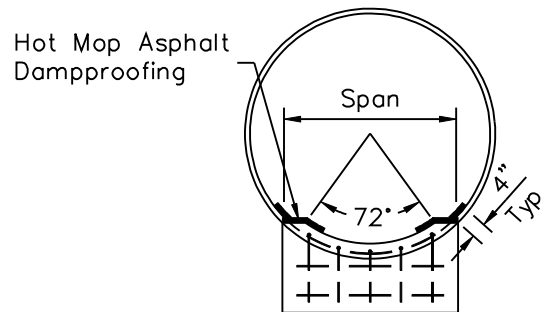
DETAIL NO.
2535



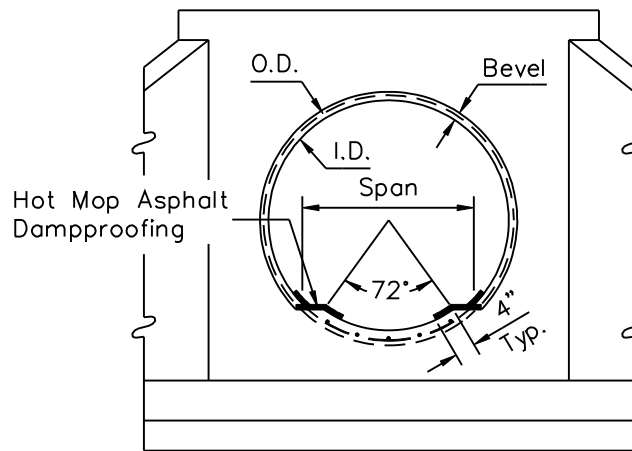
NO HEADWALL



WITH HEADWALL



ELEVATION B-B



ELEVATION A-A

GENERAL NOTES

1. For lateral dimensions of invert paving, use 72° control for CMP and span for CMPA.
2. Paving shall be scored at 18" min. (transverse) along pipe length.
3. Use bevel on inlet headwall only.
4. Wire mesh shall be tack welded to corrugation crests at 18" intervals. Laps shall be 6" min.
5. Paving shall not be placed until backfilling is completed.
6. Concrete shall be Class "B".

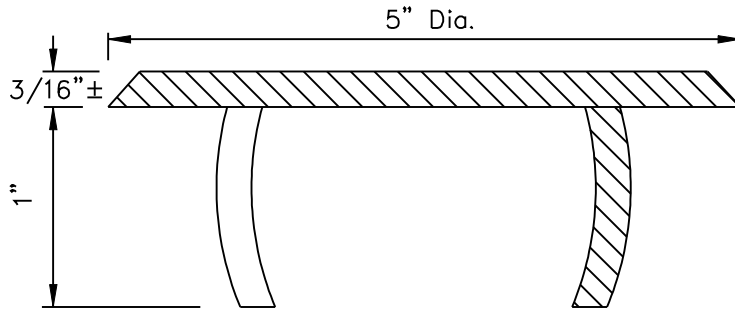
DETAIL NO.
2554

**City of Scottsdale
Standard Details**

APPROVED BY:
**Scottsdale Standards &
Specifications Committee**

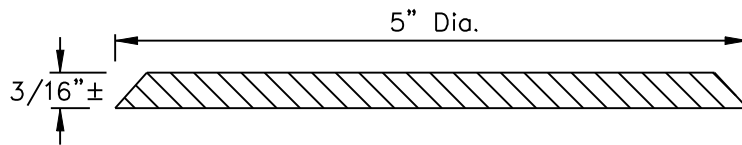
**CONCRETE INVERT PAVING FOR
CORRUGATED METAL PIPE AND PIPE ARCH**

DETAIL NO.
2554



TYPE "A"

TO BE INSTALLED IN WET CONCRETE
DURING CONSTRUCTION



TYPE "B"

TO BE INSTALLED WITH ADHESIVE
ON EXISTING STRUCTURES

NOTES

1. Material: Cast Aluminum
2. The Total Width Of Individual Letters To Be Such That Letters And Words Are Equally Spaced And Balanced.
3. Letters To Be 1/2" In Height. Type Of Letters To Be Submitted For Approval.

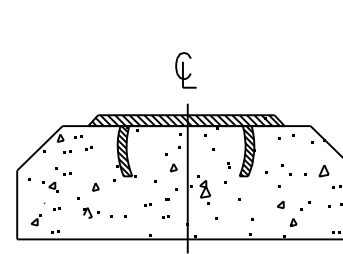
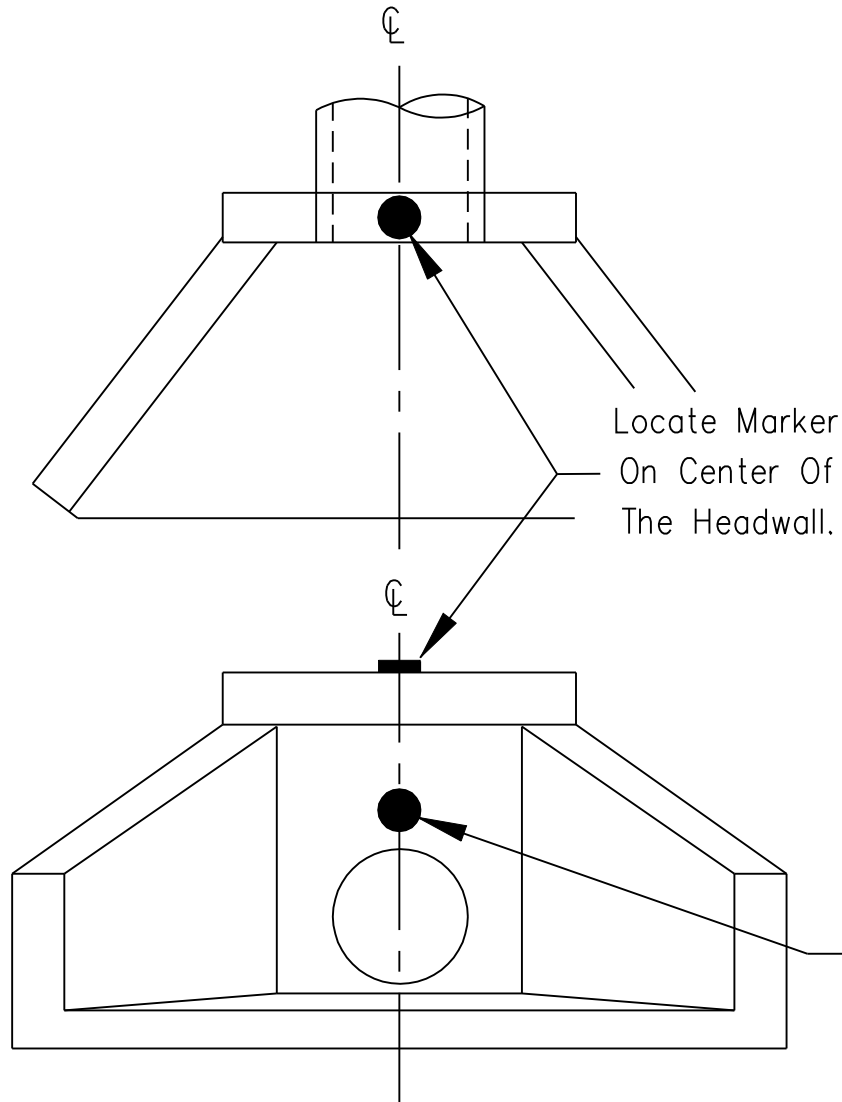


DETAIL NO.
2560-1 **City of Scottsdale**
Standard Details

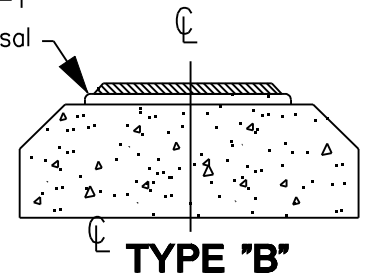
APPROVED BY:
**Scottsdale Standards &
Specifications Committee**

STORM DRAIN INLET MARKER

DETAIL NO.
2560-1

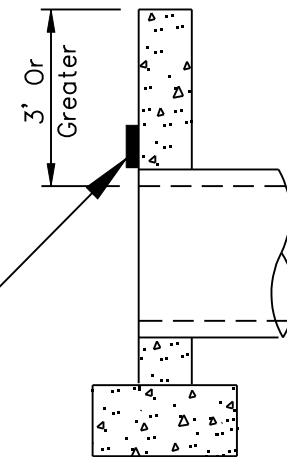


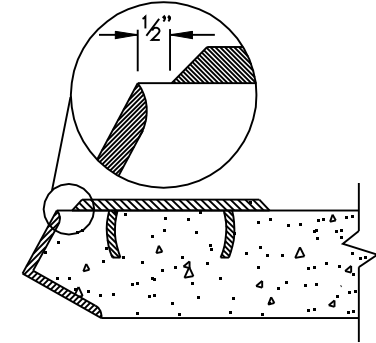
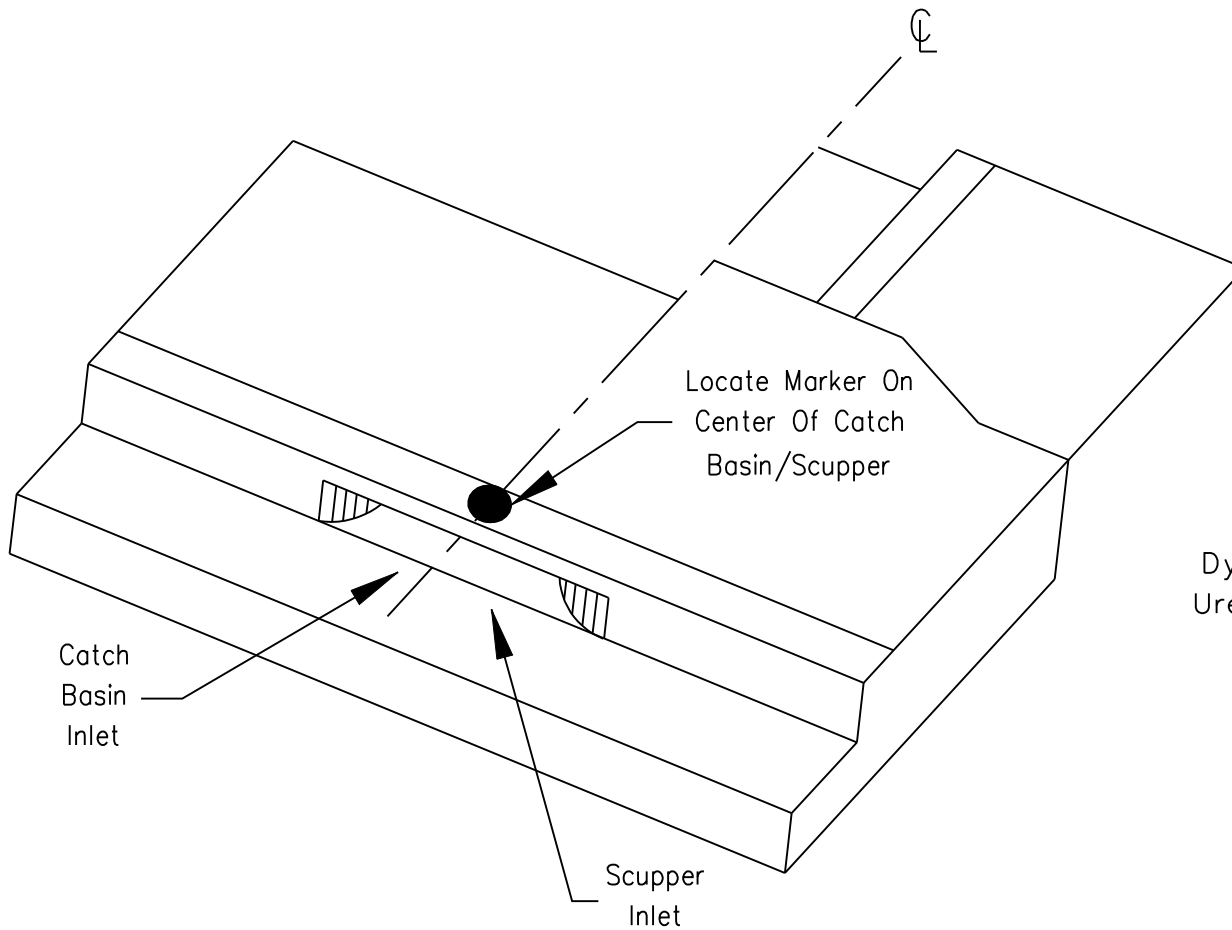
TYPE "A"
TO BE INSTALLED IN WET CONCRETE
DURING CONSTRUCTION



TO BE INSTALLED WITH ADHESIVE
ON EXISTING STRUCTURES

Locate Marker On the
Vertical Face Of Headwall
When Face Is 3' Or Greater.
Center On Headwall.

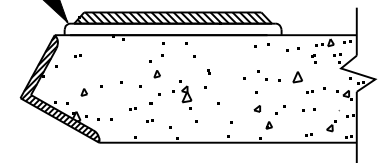




TYPE "A"

TO BE INSTALLED IN WET CONCRETE
DURING CONSTRUCTION

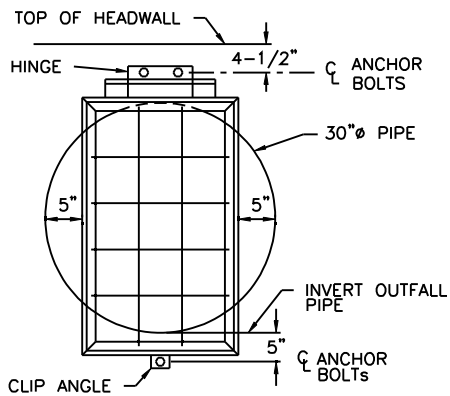
Dynamix #6125-1
Urethane Universal
Adhesive



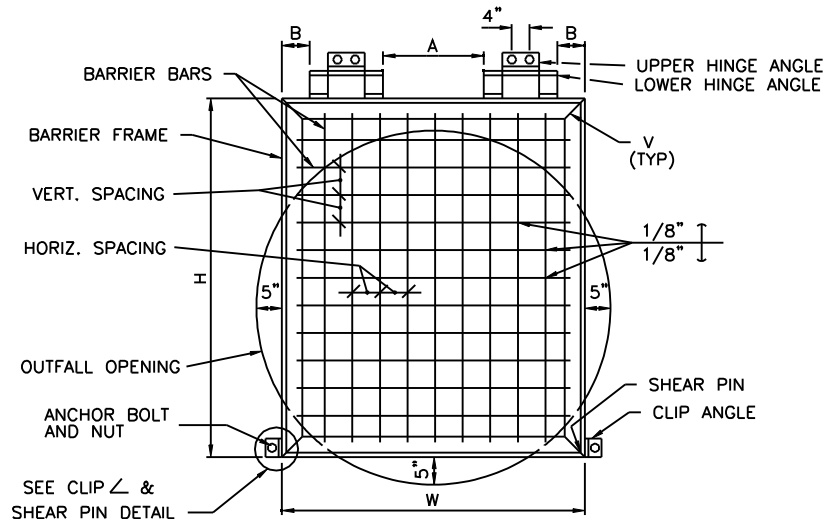
TYPE "B"

TO BE INSTALLED WITH ADHESIVE
ON EXISTING STRUCTURES

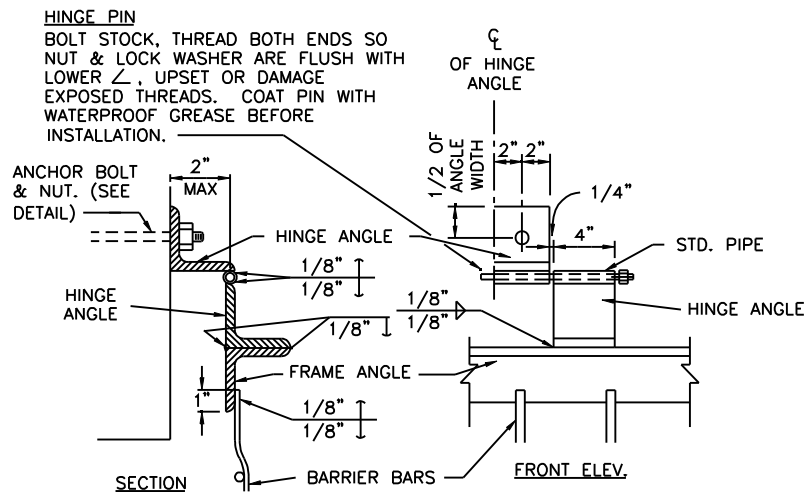
REVISED 3/28/02



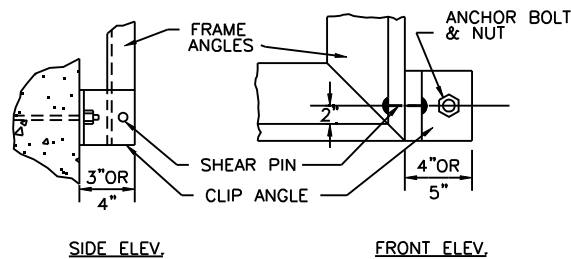
30"Ø & 36"Ø PIPES ONLY, SINGLE HINGE & CLIP ANGLE DETAIL



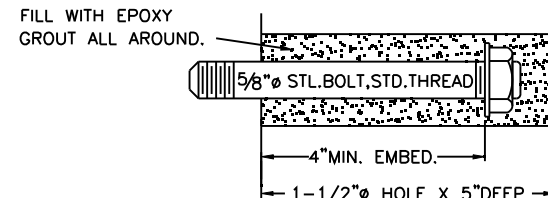
TYPICAL BARRIER DETAIL



HINGE INSTALLATION DETAIL



CLIP ANGLE & SHEAR PIN DETAIL



ANCHOR BOLT DETAIL

NOTES:

1. ALL SHEAR PIN ANGLES SHALL FIT SNUGLY AND TRULY FACE TO FACE. COVER WITH WATERPROOF GREASE PRIOR TO INSTALLATION OF PIN.
2. GALVANIZE ALL FERROUS PARTS AFTER FABRICATION.
3. THE SHEAR PIN HOLES IN THE ANGLE SHALL BE DRILLED FOR A TIGHT FIT OF THE SHEAR PINS.
4. FRAME AND HINGE ANGLES SHALL HAVE THE OUTSTANDING LEGS OUT FOR OUTLETS.
5. ALL ANCHOR BOLTS SHALL BE 5/8"Ø ANCHOR BOLTS EMBEDDED 4"(MIN.) INTO EPOXY GROUT.
6. ALL SHEAR PINS ARE TO BE PEENED BOTH ENDS AFTER INSTALLATION.
7. SHEAR PIN MATERIAL SHALL BE COMMERCIAL PURE ALUMINUM WIRE.
8. SEE BARRIER SCHEDULE, DET. 2562-2 FOR VARIABLE DIMENSIONS.
9. COVER ALL MOVABLE CONTACT SURFACE WITH A COAT OF WATERPROOF GREASE PRIOR TO INSTALLATION.
10. ALL BARRIER BARS TO BE 1/2" PLAIN.

SIZE OF OUTFALL CONDUIT	FRAME ANGLES	SHEAR PIN CLIP ANGLES	SHEAR PINS	HINGE PINS	HINGE ANGLES	HINGE STD. PIPE	* NO. OF EQUAL BARRIER BAR SPACES (HORIZ.)	NO. OF EQUAL BARRIER BAR SPACES (VERT.)	H (OUT TO OUT FRAME ANGLES)	* W (OUT TO OUT FRAME ANGLES)	A	B
30"	2X2X1/4	4X4X1/4	1-1/8ø	1/2"ø	2X2X1/4	3/4"	3	5	34"	20"	SINGLE HINGE CENTERED	
36"	2X2X1/4	4X4X1/4	1-1/8ø	3/4"ø	2-1/2X 2-1/2X1/4	1"	4	6	40"	26"	SINGLE HINGE CENTERED	
42"	2X2X1/4	4X4X1/4	2-1/8ø	1/2"ø	2X2X1/4	3/4"	5	6	42"	32"	0	0
48"	3X3X7/16	5X3X1/4	2-1/8ø	3/4"ø	2-1/2X 2-1/2X1/4	1"	5	7	47"	38"	3"	1"
54"	3X3X7/16	5X3X1/4	2-1/8ø	3/4"ø	2-1/2X 2-1/2X1/4	1"	6	8	54"	44"	5"	3"
60"	3X3X7/16	5X3X1/4	2-1/8ø	3/4"ø	2-1/2X 2-1/2X1/4	1"	7	9	60"	50"	9"	4"
66"	3X3X7/16	5X3X1/4	2-1/8ø	3/4"ø	2-1/2X 2-1/2X1/4	1"	8	10	66"	56"	11"	6"
72"	4X4X5/8	5X3X1/4	2-3/16ø	1"ø	3X3X3/8	1-1/4"	9	11	73"	62"	15"	7"
78"	4X4X5/8	5X3X1/4	2-3/16ø	1"ø	3X3X3/8	1-1/4"	10	11	79"	68"	17"	9"
84"	4X4X5/8	5X3X1/4	2-3/16ø	1"ø	3X3X3/8	1-1/4"	11	13	86"	74"	21"	10"
90"	4X4X5/8	5X3X1/4	2-3/16ø	1"ø	3X3X3/8	1-1/4"	12	13	92"	80"	23"	12"
96"	4X4X5/8	5X3X1/4	2-3/16ø	1"ø	3X3X3/8	1-1/4"	12	14	98"	86"	29"	12"

*NOTE: Adjust these values for skewed conduits. Provide 5" maximum opening at each side and between bars.

DETAIL NO. 2562-2	City of Scottsdale Standard Details	APPROVED BY: Scottsdale Standards & Specifications Committee	BARRIER SPECIFICATIONS SCHEDULE	DETAIL NO. 2562-2
-----------------------------	--	--	--	-----------------------------