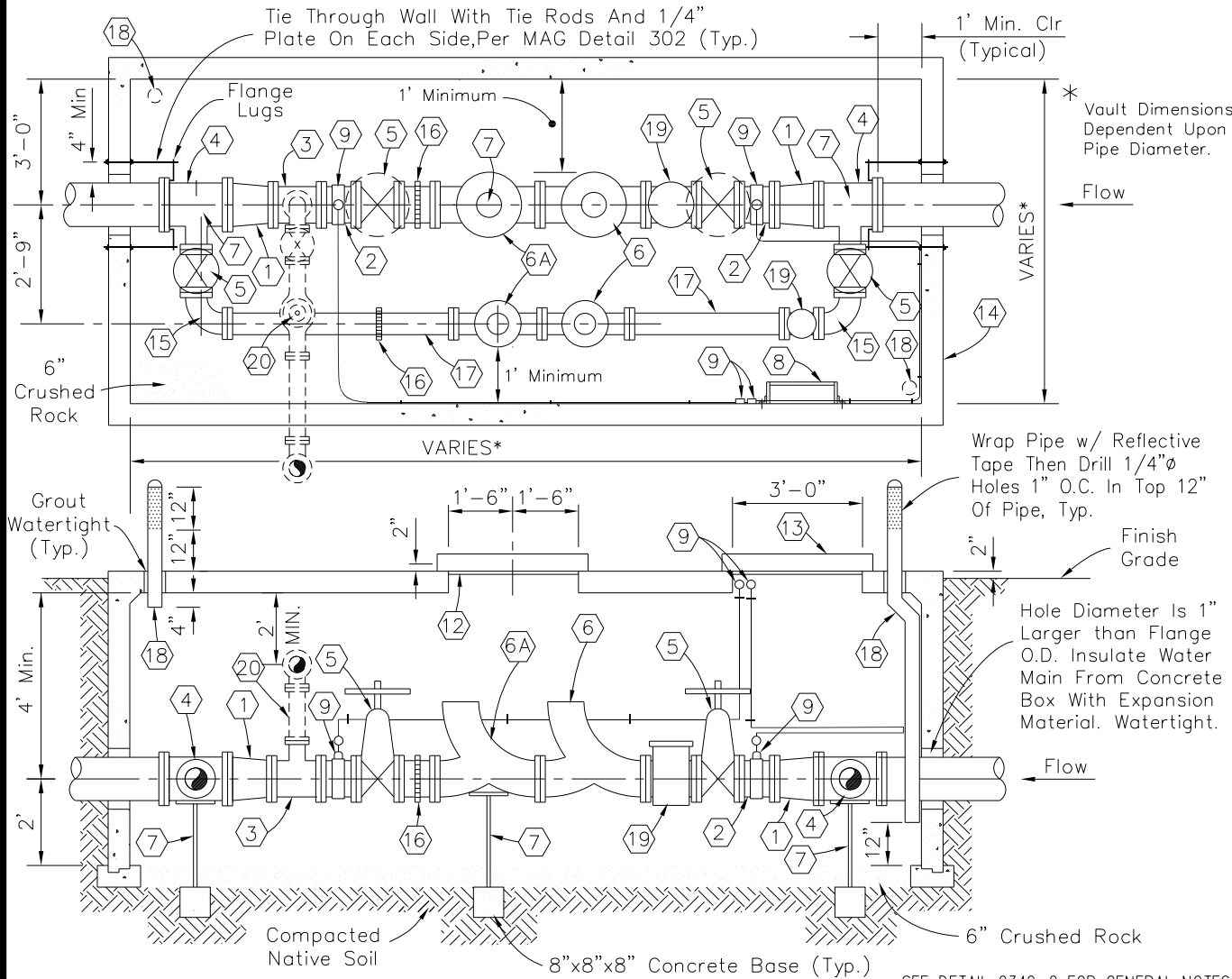


REVISED 5/19/15



## NOTES

- 1 D.I.P. Flg Concentric Reducer
- 2 D.I.P. Flg x Flg Spool Piece
- 3 D.I.P. Flg x Flg Tee. Install Only When Detail 2342-2 Is Used.
- 4 D.I.P. Flg Reducing Tee
- 5 Flg NRS Resilient Wedge Gate Valve, Inside Epoxy Coated, Low Zinc Stem w/ Wheel Handle
- 6 Flg PRV Bermad Model 723-20-V-I-U w/ Valve Position Indicator & Low Flow V-Port Plug And Must Have Stainless Steel Pilot Tubing, Or Approved Equal.
- 6A Flg PRV Bermad Model 723-20-V-I-U w/ Valve Or Approved Equal Will Be Installed When Pressure Differential Is 100 psi Or Greater.
- 7 4" Dia Galv Adjustable Pipe Supports w/ 1" Adj. Rod And Nut On 8"x 8"x 8" Concrete Base. Not Used.
- 9 Saddle With 1" Corp., 3/8" Brass Reducer, 3/8" 3/8" Brass Tee w/ Oil Filled 0-200 Pressure Gauge. Install 3/8" Stainless Tubing Strapped To Wall As Shown w/ Oil Filled Gauges Mounted At Access Door. Gages To Be Readable From Outside Vault.
- 12 For 8" Valves Or Larger Install Utility Vault Raised/ Adjustable Access Door, Model 3636, Or Approved Equal, Centered Over Main Valves For Removal.
- 13 Utility Vault Raised/Adjustable Steel Access Door For Inspection, Model 3636 Or Approved Equal. Place In Corner With Ladder.
- 14 Precast Concrete Water Utility Vault, Per MAG Std Det 321 & 345-1, Inside Dimensions Vary Depending On Pipe Size.
- 15 D.I.P. Flg 90° Elbow
- 16 Victaulic Coupling Or Approved Equal w/ All Thread Tie Rods.
- 17 D.I.P. Flg Pipe Spool
- 18 4" Galv. Steel Vent Pipe With Cap. Strap Pipe To Wall. Install Vents In Unpaved Areas Only.
- 19 Basket Type Strainer
- 20 4" Pressure Relief Bermad Model 730-I-U w/ Valve Position Indicator Or Approved Equal Required When Pressure Differential Meets Or Exceeds 100 PSI. See Detail 2342-2.

\* Engineer to note direction of flow and pressure setting on the plans.

SEE DETAIL 2342-2 FOR GENERAL NOTES

DETAIL NO.  
**2342-1**

**City of Scottsdale**  
**Standard Details**

APPROVED BY:  
**Scottsdale Standards & Specifications Committee**

**PRESSURE REDUCING VALVE**

DETAIL NO.  
**2342-1**