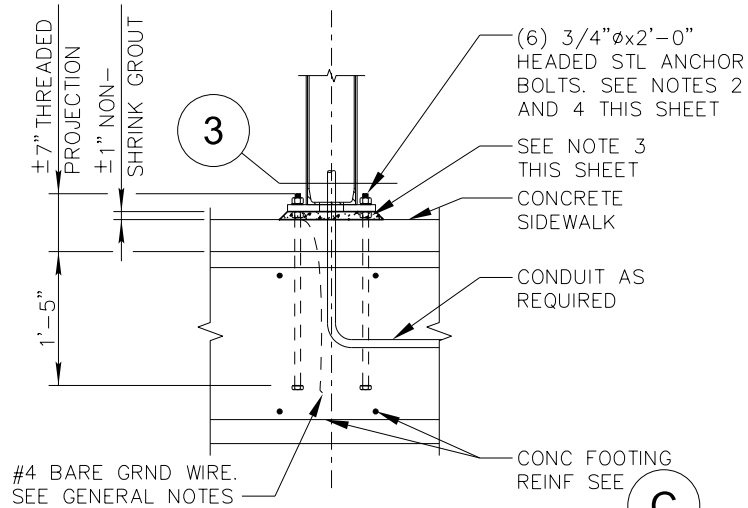
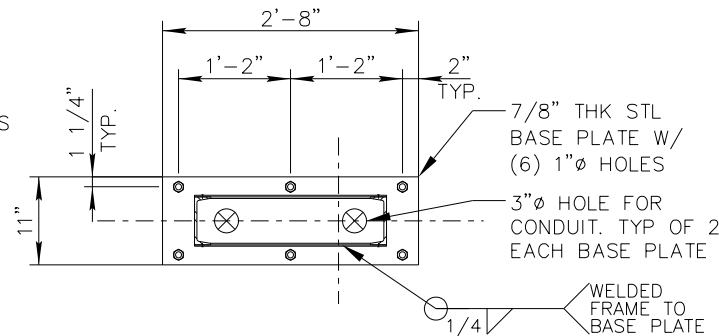


1 STEEL COLUMN ASSEMBLY
N.T.S.



2 COLUMN BASE AT CONC
N.T.S.



3 COLUMN BASE PLATE
N.T.S.

NOTES:

1. SECURE 3/16" THICK PLATE TO EACH SIDE OF WELDED FRAME USING 1/4" STAINLESS STEEL SCREWS @ 8" O.C. AROUND PERIMETER. PROVIDE TAMPER-RESISTANT HEADS ON SCREWS.
2. ANCHOR BOLTS SHALL BE ASTM F1554 GRADE 36 WITH HOT-DIP OR MECHANICALLY DEPOSITED ZINC COATING. PROVIDE STEEL SETTING TEMPLATES TO ACCURATELY LOCATE ANCHOR BOLTS AND TO FIRMLY HOLD ANCHOR BOLTS IN-PLACE DURING CONCRETE PLACEMENT. PERIODIC SPECIAL INSPECTION OF ANCHOR BOLT INSTALLATION IS REQUIRED AND SHALL BE PERFORMED IN ACCORDANCE WITH TABLE 1705.3 OF THE 2012 IBC. DO NOT PLACE CONCRETE FOOTING WITHOUT APPROVAL OF REINFORCING, EMBEDDED ITEMS AND ANCHOR BOLT PLACEMENT BY SPECIAL INSPECTOR.
3. USE METAL WEDGES, SHIMS, OR LEVELING NUTS AS REQUIRED TO LEVEL COLUMN BASE PLATES. METAL WEDGES/SHIMS SHALL BE SAME MATERIAL AS BASE PLATE. CUT OFF PROTRUSIONS OF WEDGES AND SHIMS AND WELD FLUSH WITH EDGE OF BASE PLATE. LEVELING NUTS SHALL BE THE SAME MATERIAL AS THE ANCHOR BOLTS.
4. AFTER COMPLETE INSTALLATION OF COLUMN, UPSET THREADS ON ANCHOR BOLTS TO PREVENT TOP NUT FROM BACKING OFF.

DETAIL NO.
2264-6

City of Scottsdale
Standard Details

APPROVED BY:
Scottsdale Standards & Specifications Committee

SCOTTSDALE ROAD BUS SHELTER

DETAIL NO.
2264-6