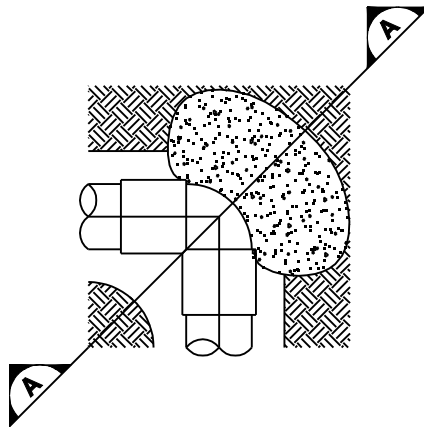
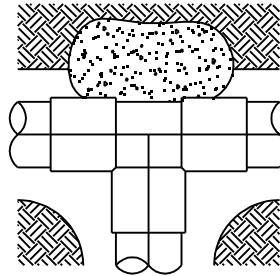


REVISED: 05/14/08



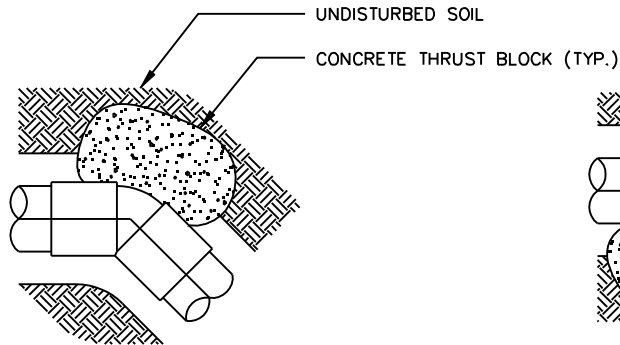
90° ELL

SCALE: NTS



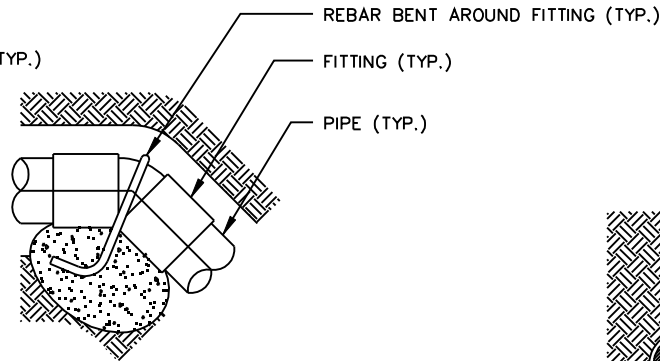
TEE

SCALE: NTS



45° ELL

SCALE: NTS



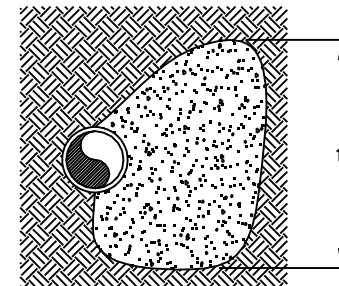
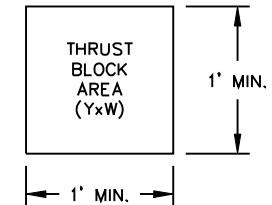
45° ELL (VERTICAL)

SCALE: NTS

| PIPE SIZE | MINIMUM THRUST BLOCK AREA (YxW) | |
|-------------|---------------------------------|--------------------|
| | IRRIGATION PIPE | |
| | TEE, DEAD END 90° BEND | 45°, 22.5° |
| 3" | 1 SF | .5 SF |
| 4" | 1.5 SF | 1 SF |
| 5" & LARGER | 2 SF | 1.5 SF |
| | PER MAG DETAIL 380 | PER MAG DETAIL 380 |

NOTES

1. MINIMUM THRUST BLOCK AREAS ARE BASED ON A SOIL BEARING CAPACITY OF 3000 LBS/SF
2. THRUST BLOCK SHALL EXTEND INTO UNDISTURBED SOIL.
3. THRUST BLOCK SHALL BE MAG SECT. 725-CLASS C.
4. MAINLINE PIPING 4" AND LARGER SHALL HAVE MEGA/LUG JOINT RESTRAINTS INSTALLED AT ALL FLOW DIRECTION CHANGES (CONCRETE THRUST BLOCK NOT REQUIRED IF BELL END HARNESS JOINT RESTRAINTS ARE INSTALLED PER MAG 303-1 AND 303-2).



SECTION

A-A

DETAIL NO.
2643

City of Scottsdale
Standard Details

APPROVED BY:
**Scottsdale Standards &
Specifications Committee**

IRRIGATION THRUST BLOCK

DETAIL NO.
2643