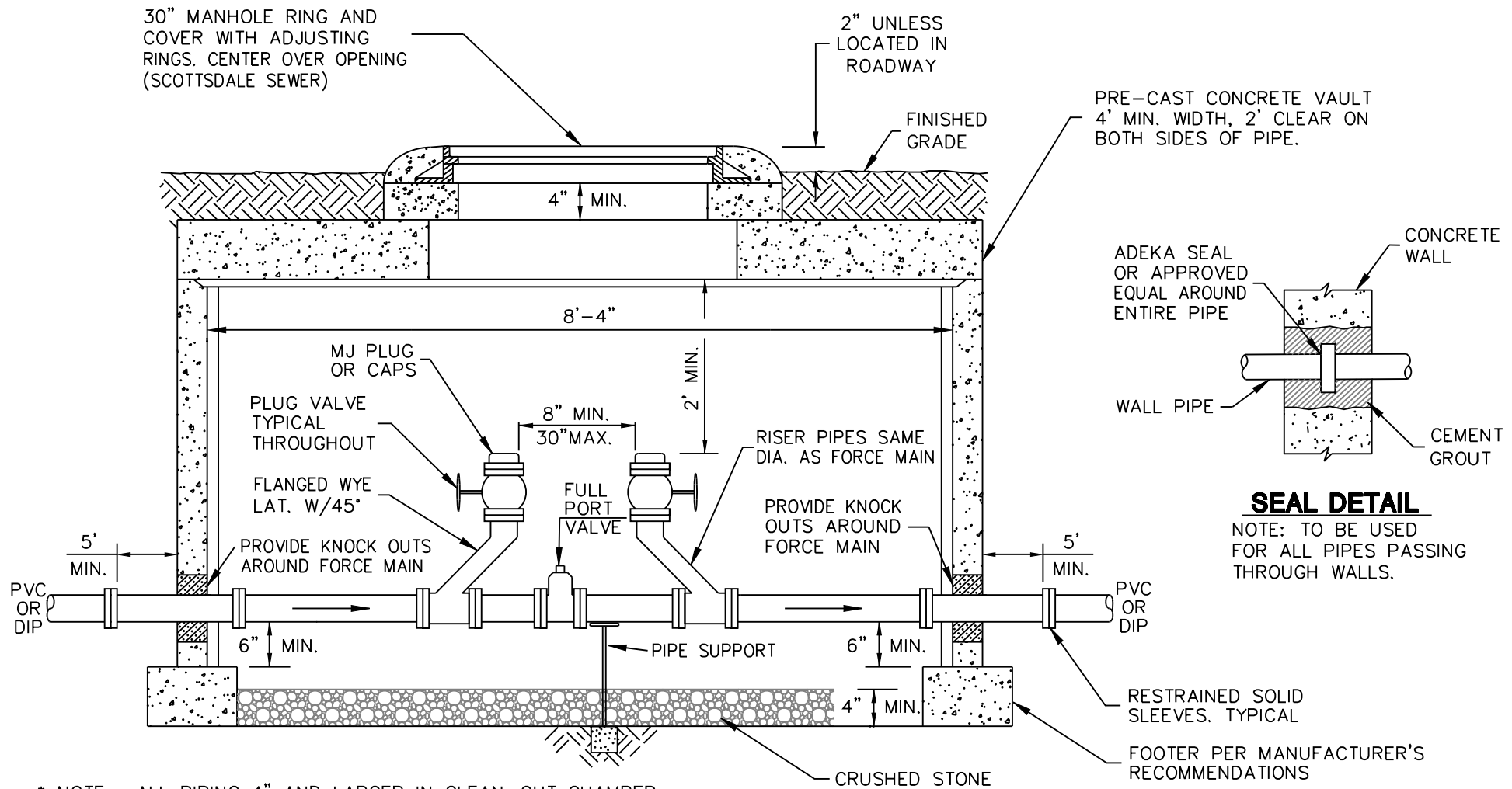


REVISED 4/06/09



* NOTE: ALL PIPING 4" AND LARGER IN CLEAN-OUT CHAMBER, EXCEPT AS NOTED, TO BE DUCTILE IRON CONNECTED WITH FLANGED JOINTS AND STAINLESS STEEL BOLTS.

DETAIL NO.
2403

City of Scottsdale
Standard Details

APPROVED BY:
Scottsdale Standards & Specifications Committee

TWO-WAY FORCE MAIN CLEAN-OUT

DETAIL NO.
2403