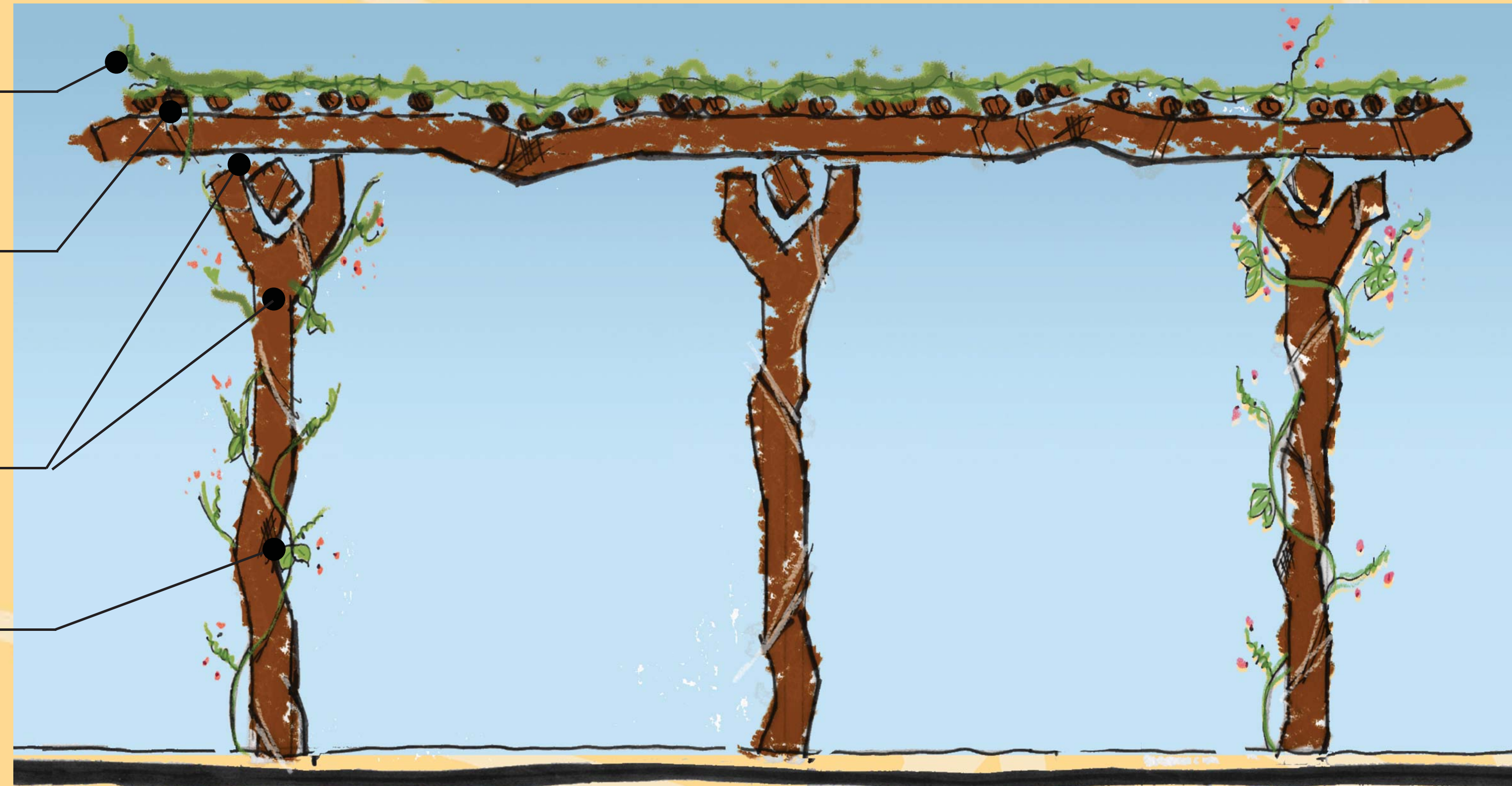
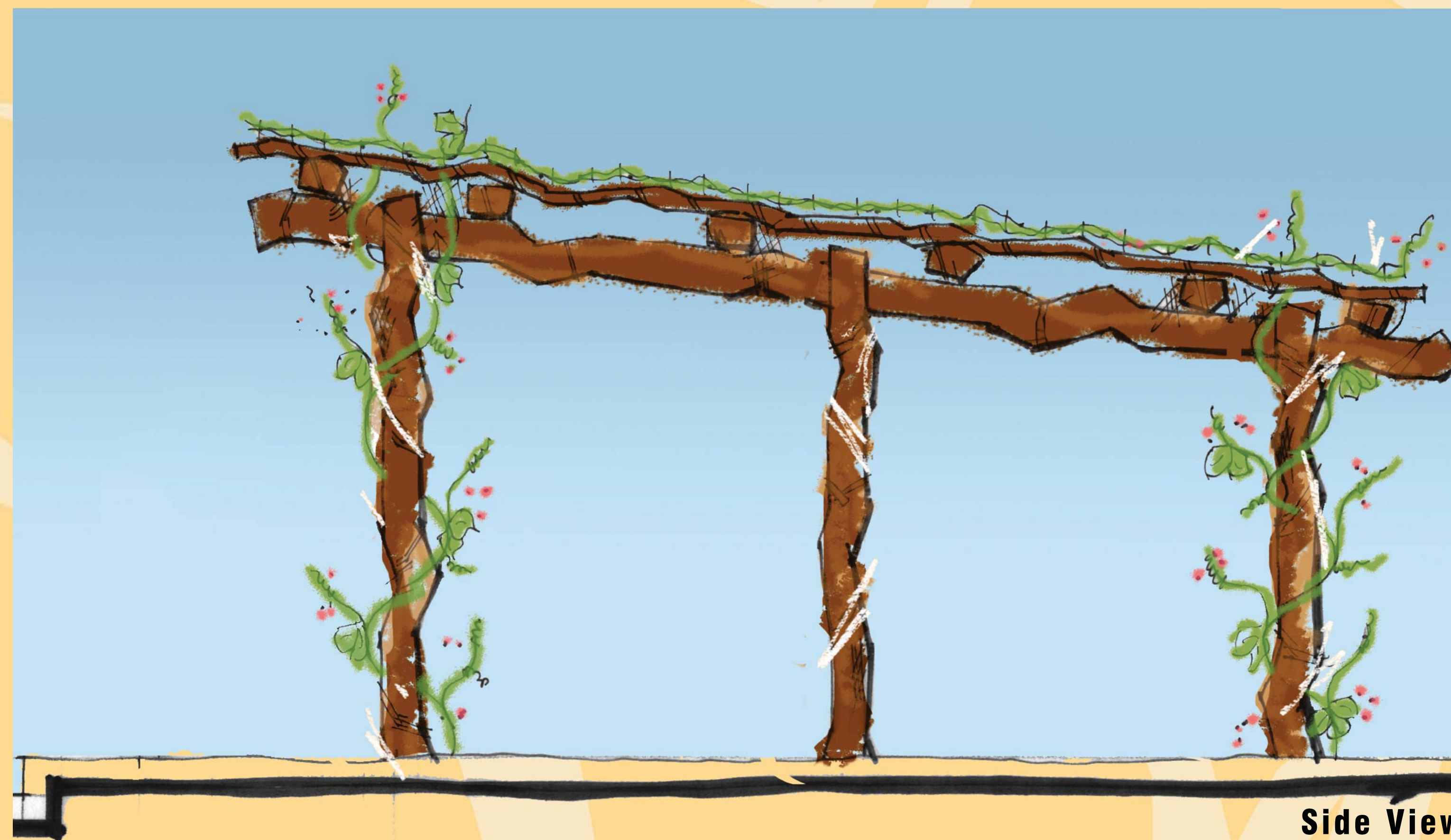


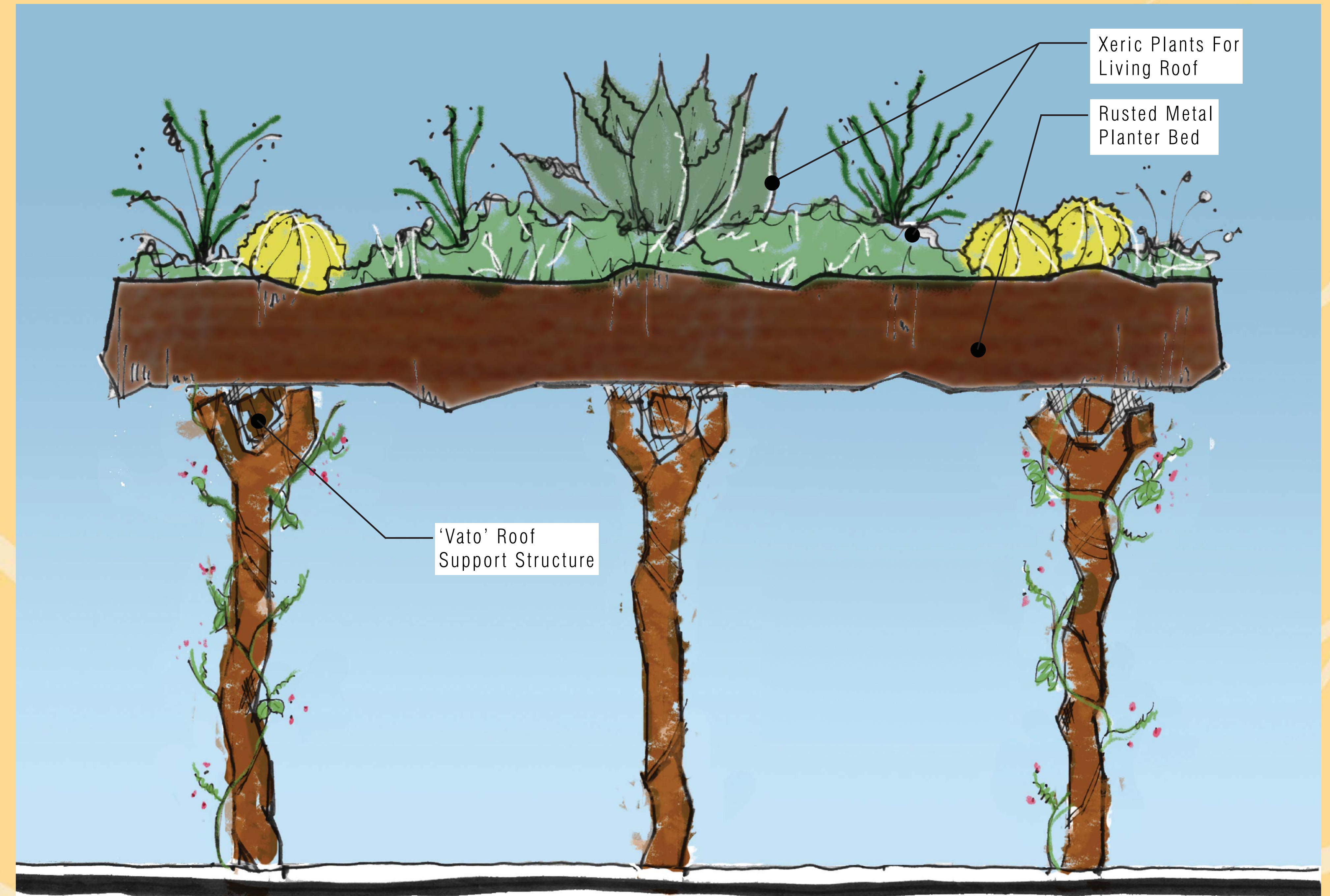
- Wire Mesh Interwoven Around Rebar Lath to Reflect Native Arrow Weed
- Rebar Element as Roof Lath to Resemble Saguaro Ribs
- Support Post, Beams, and Roof Joists Finished/ Formed to Resemble Mesquite Trunks.
- Wire Artwork to Reflect Native Bean Vine Around Posts



Front View



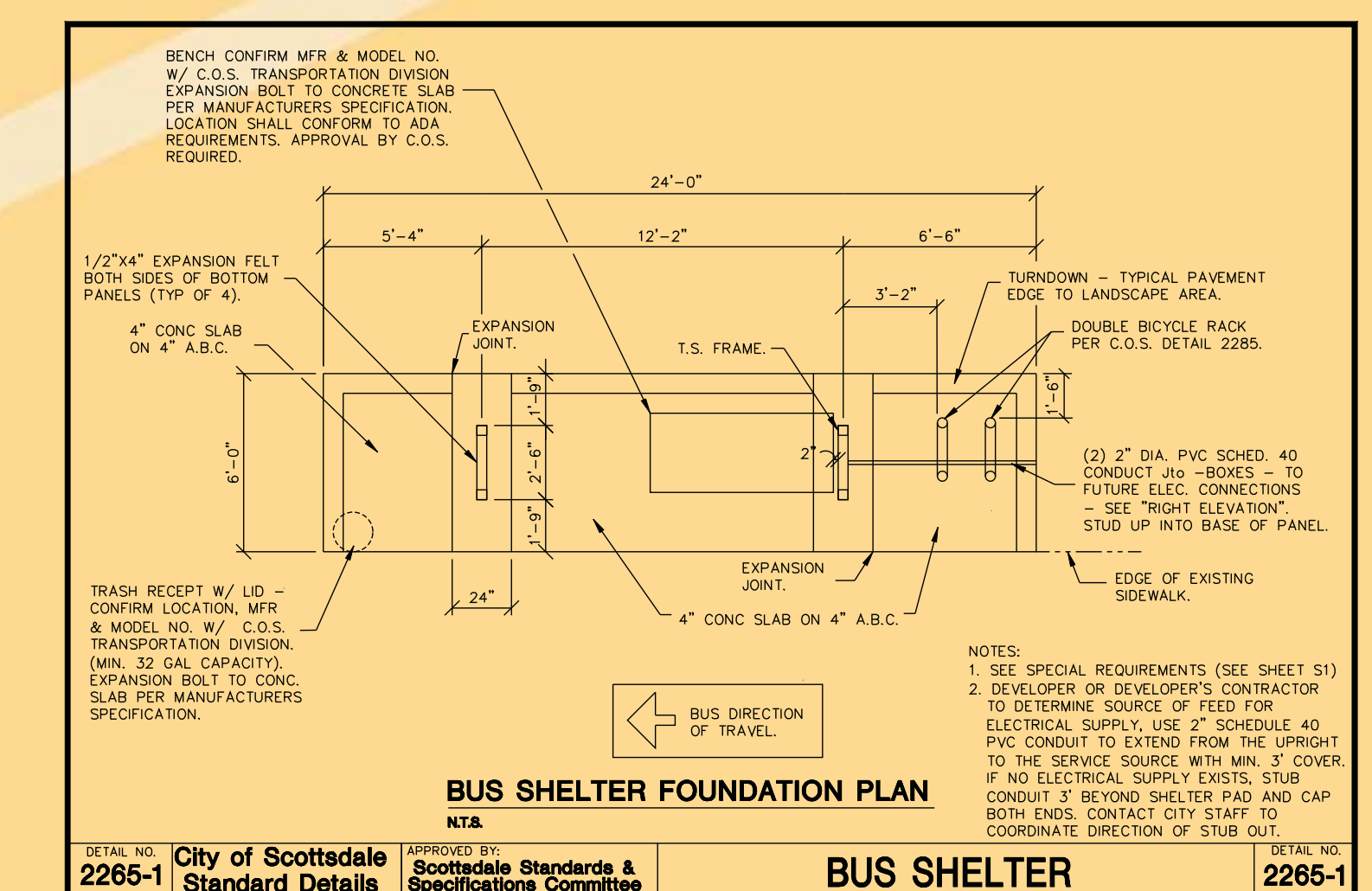
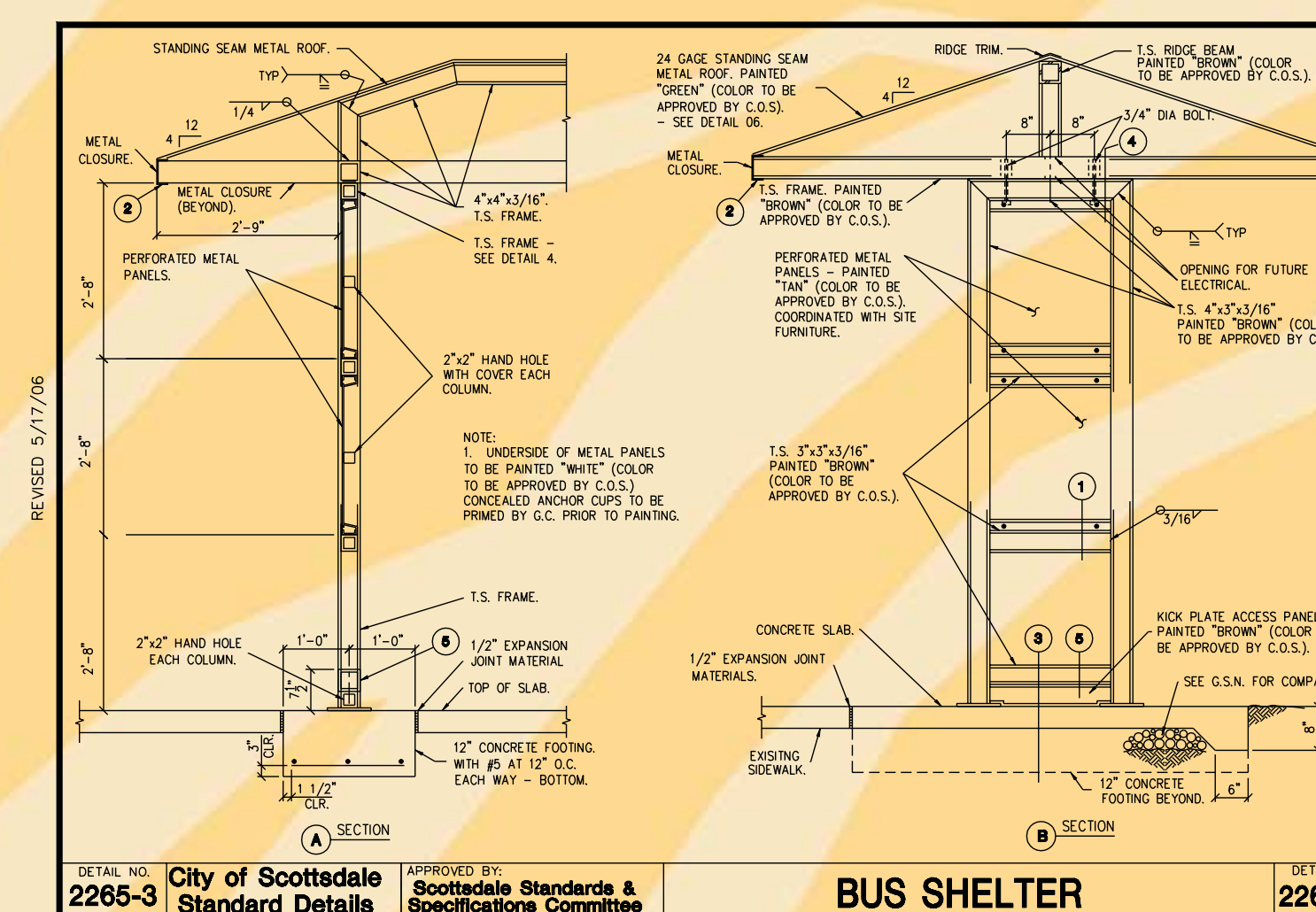
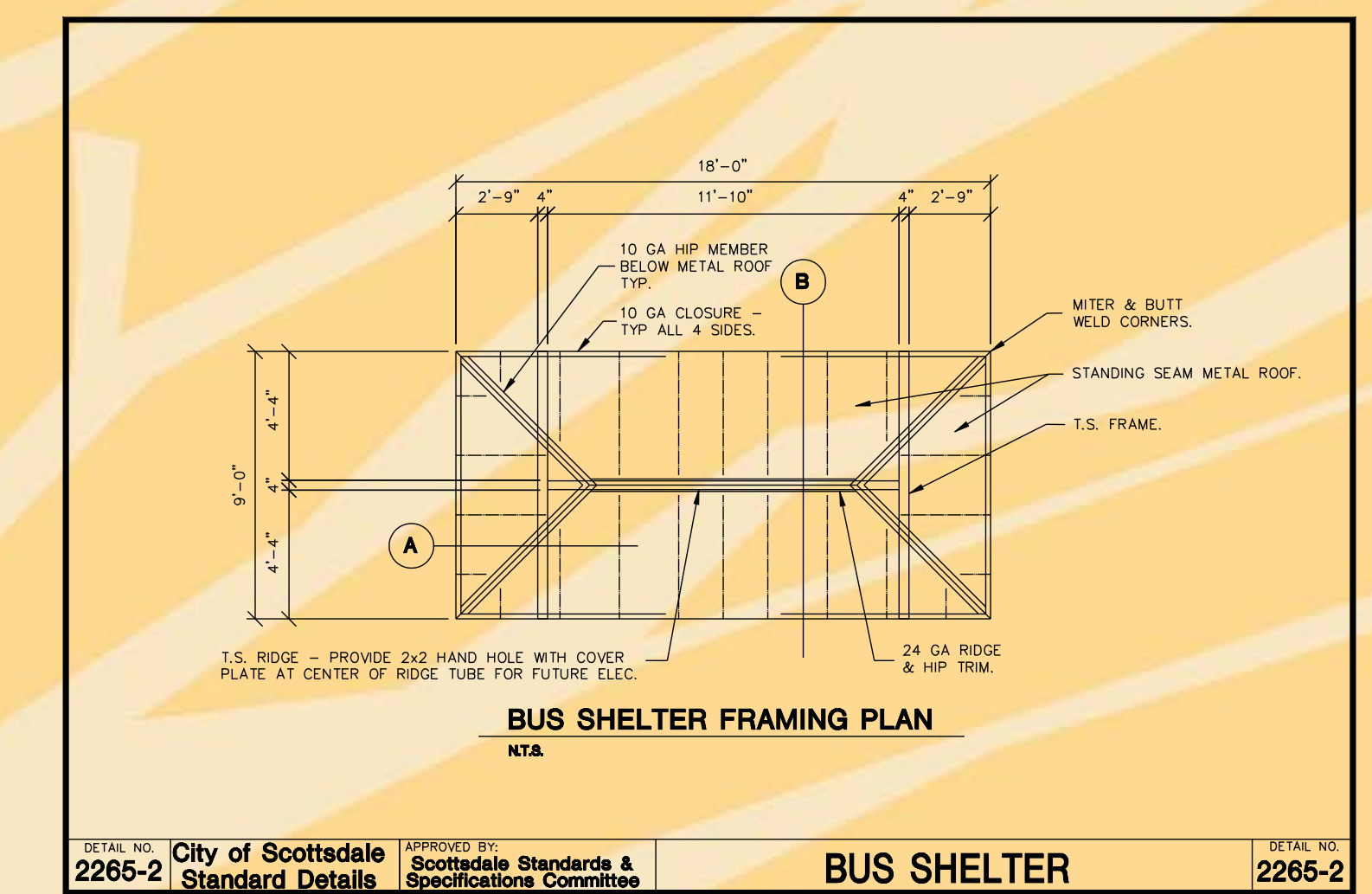
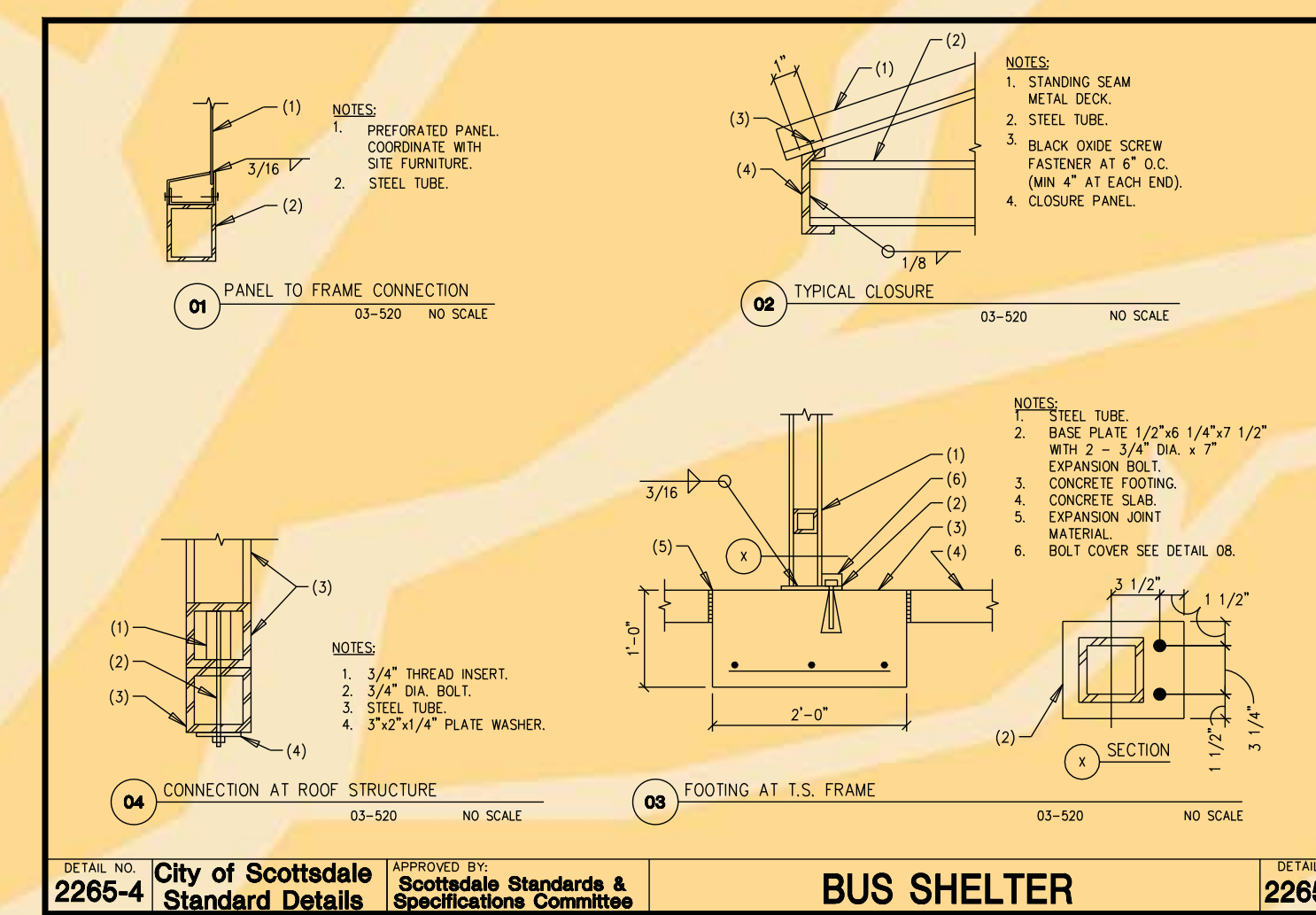
Side View



Xeric Plants For Living Roof

Rusted Metal Planter Bed

'Vato' Roof Support Structure



A-2.5 City of Scottsdale Standard Bus Stop