

Scottsdale Overview

A city management perspective



<http://www.scottsdaleaz.gov/about/>





Simply Better Service
for a World-Class Community



Simply Better Service for a World-Class Community





<http://www.scottsdaleaz.gov/about/>



Tony Nelssen Equestrian Center

The expanded Tony Nelssen Equestrian Center at WestWorld opened in January 2014 as a flexible space for a wide variety of events and shows.

It covers more than 257,000 square feet about the same floor area as a typical 25-story building.

At 63 feet, it's taller than a five-story building.

You could fit a football field with 12 rows of bleachers and a press box inside the North Hall -- but your punts might hit the ceiling

Two Boeing 747s could fit inside the North Hall... if you could get them through the door.

More than 70 events were booked at WestWorld in 2014 including horse shows, auto auctions, rodeos, bull riding, home shows, a pet expo and a circus.

Most of WestWorld, including the Tony Nelssen Equestrian Center, sits on federal land managed by the Bureau of Reclamation

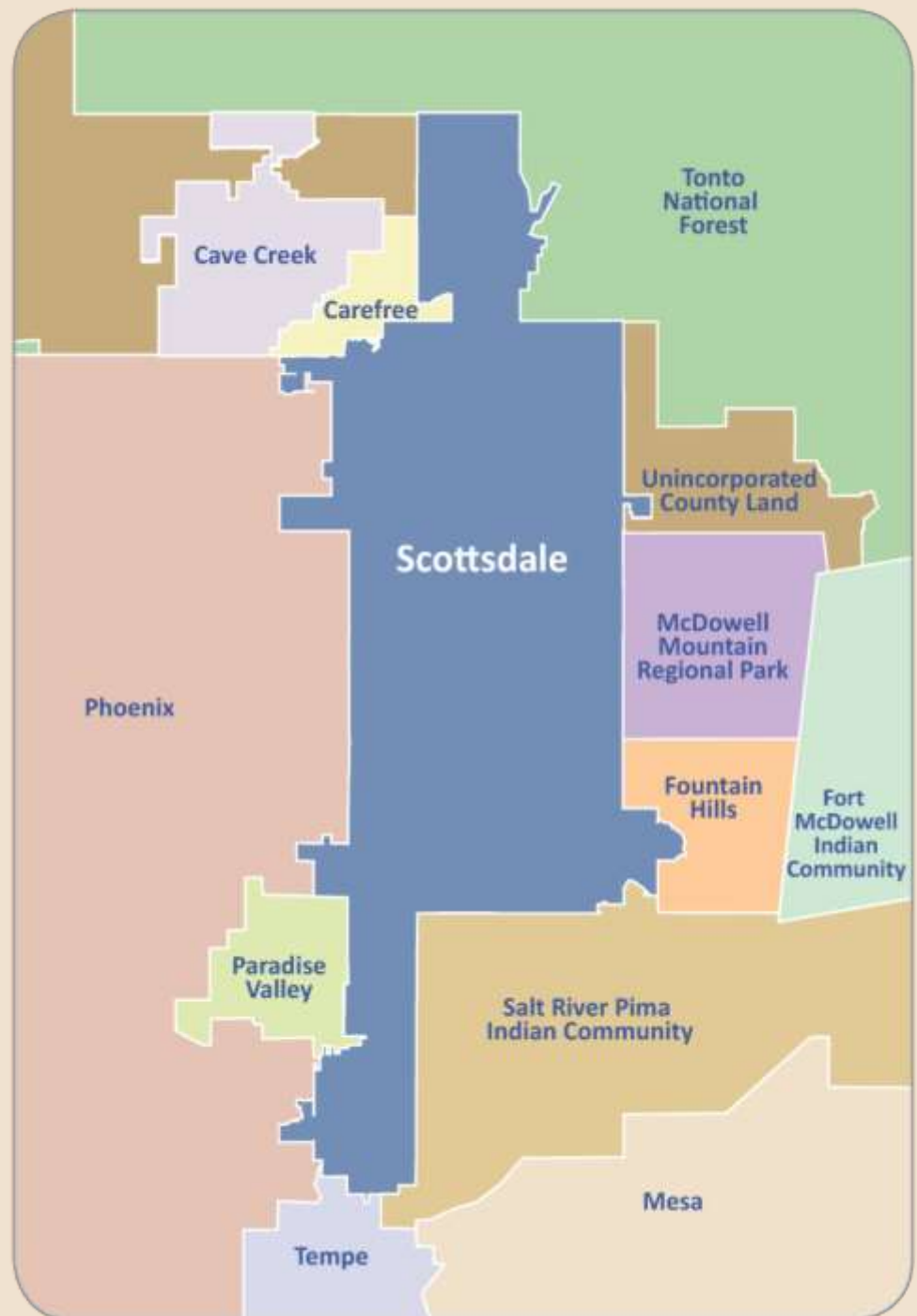


scottsdale
Museum
of the West

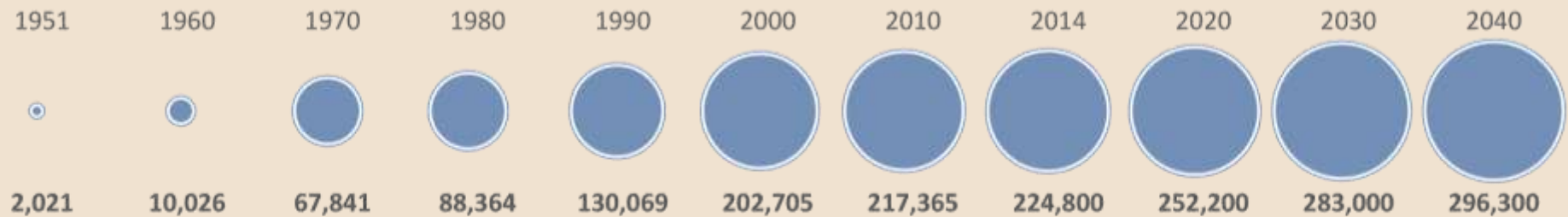




- 224,800 residents
690,389 hotel guests
- 2,147 full-time and
299 part-time workers
- 3 million sq. ft.
of city facilities
- 185 square miles,
31 miles tall, 11 wide
- Elevation varies from
1,150 to 4,877 feet
- SDL airport is 1,510 feet



Scottsdale is the seventh largest city in Arizona and the 95th largest city in the United States



Source: U.S. Census Bureau (1951-2010), azstats.gov (2014-2040)



“The municipal government provided by this charter shall be known as the **council manager** form of government.”

Highlighted Responsibilities

Mayor and City Council (Legislation)

Adopt budgets

Define the number, powers & duties and compensation of all officers and employees; hire charter officers

Establish and appoint members to boards/commissions

Adopt ordinances regulating local affairs

Set fines and penalties for violation of ordinances

Enter into contracts

Regulate the acquisition, sale, and use of real property

Decide which governmental services will be provided

Establish public utilities

Grant franchise for the use of public rights-of-ways

License businesses for revenue and regulation

Set tax rates and user fees consistent with state laws

Approve claims against the city

City Manager and Charter Officers (Administration)

Propose budget ; spend within budgetary limits

Fill positions and administer payroll consistent with ordinances and within budget adopted by Council

Support the work of boards/commissions

Implement and enforce ordinances

Collect fines and enforce penalties

Propose contracts; manage/enforce approved contracts

Negotiate terms of acquisition and sale of real property; carry out acquisition and sale

Oversee the day to day operation of programs and services

Manage provision of utility services

Enforce terms of franchise agreement

Administer business licenses as provided by council

Collect taxes and user fees

Bring lawsuits, with Council approval ; propose settlement of claims; pay approved claims.



Scottsdale City Council

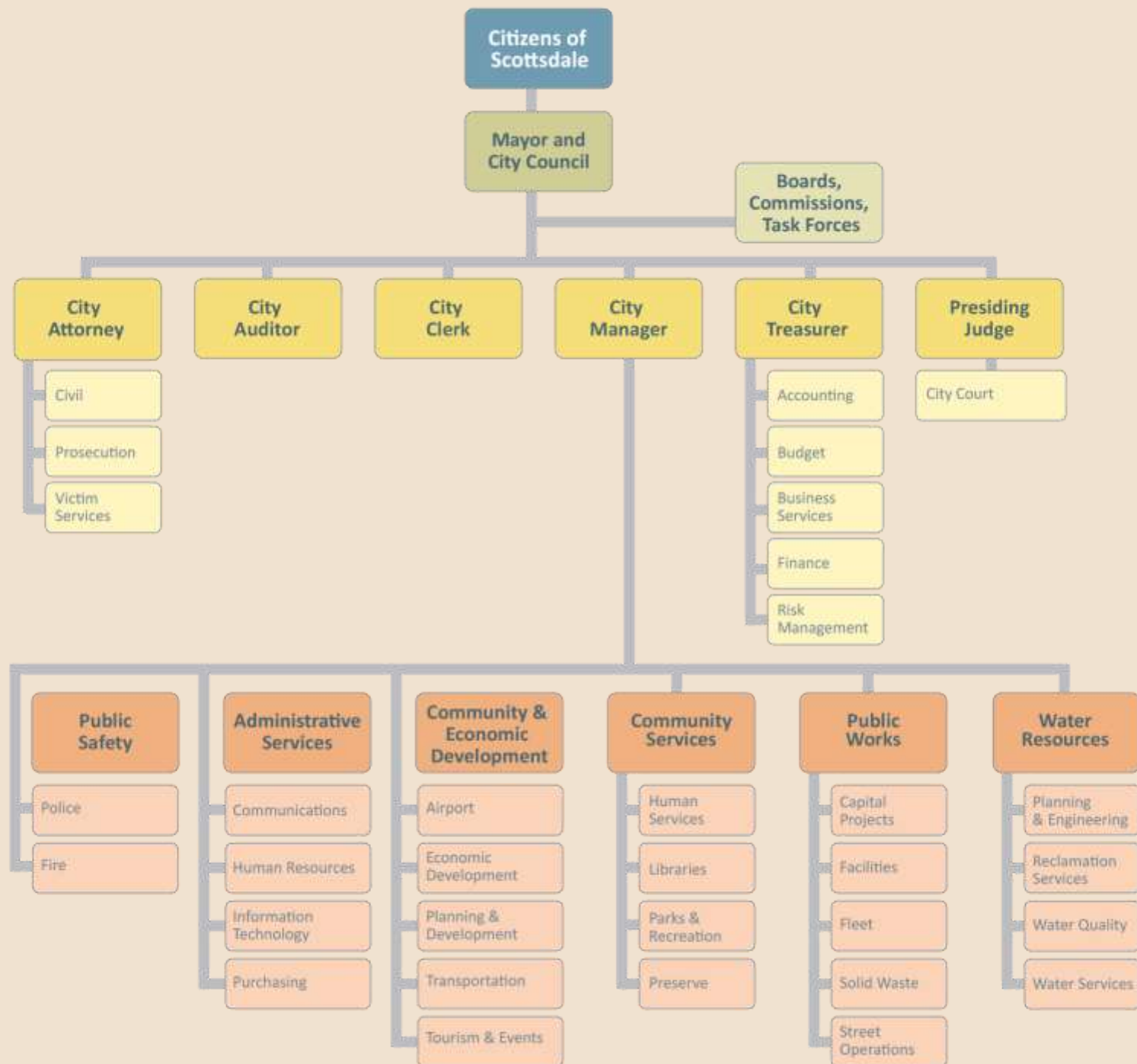


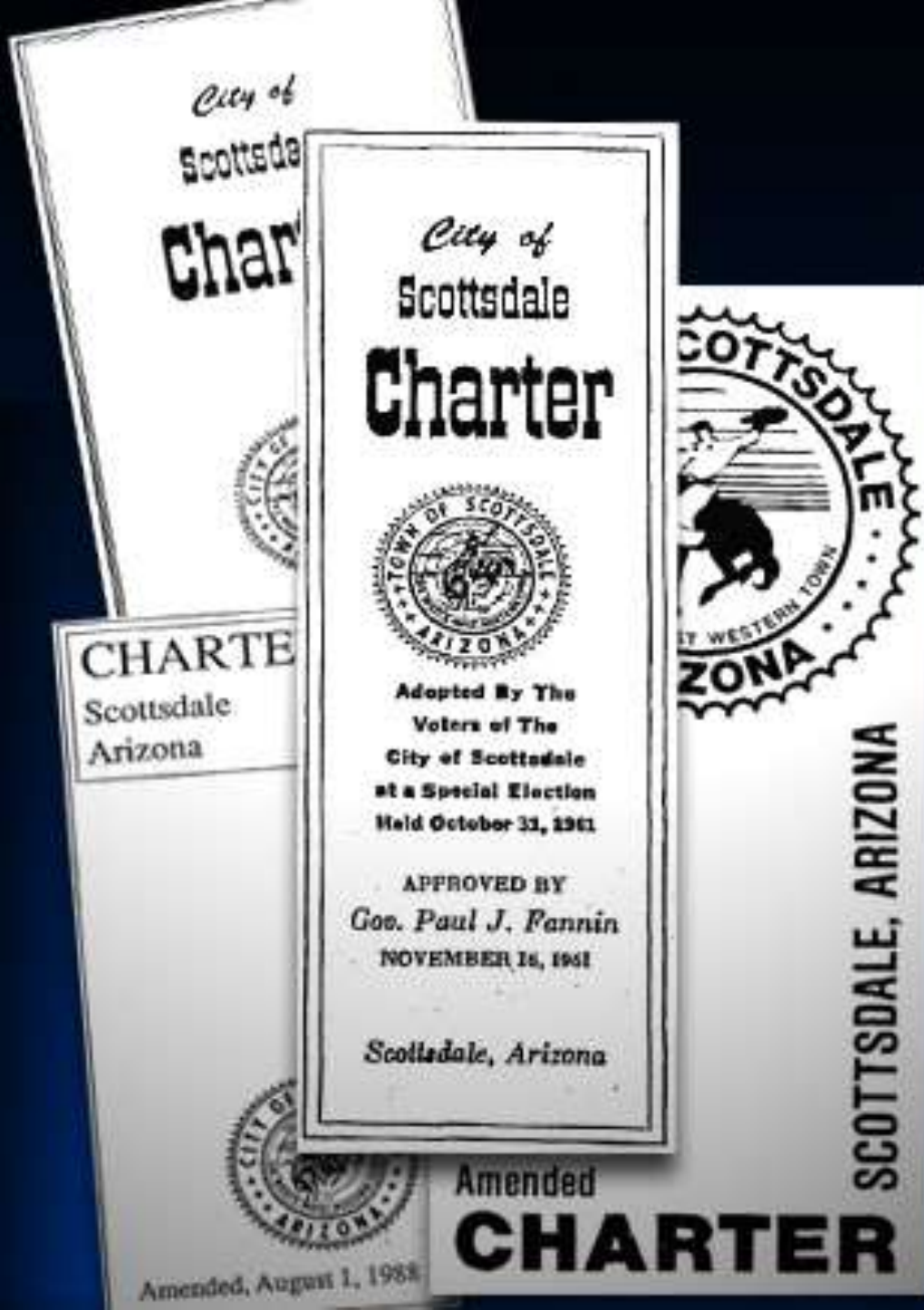
City Manager

**Chief Administrative Officer -
works directly for the City Council**

- **Enforce and implement laws**
- **Handle personnel matters**
- **Prepare and administer the budget**
- **Keep the City Council informed**

**About 2,200 (91%) of the city's
employees report to the city manager**





The City Charter

Defines the city's powers and functions.

Sets the governance structure including 7 elected officials:
Mayor and 6 Councilmembers

Establishes six city officers:
City Attorney
City Auditor
City Clerk
City Judge
City Manager
City Treasurer

Amending or modifying the charter requires a public vote.

<http://www.scottsdaleaz.gov/council/charter>



Value Scottsdale's Unique Lifestyle and Character



Economic Vitality



Enhance Neighborhoods



Preserve Meaningful Open Space



Seek Sustainability



Advance Transportation

City Council Priorities

- A. Partner with residents and businesses to revitalize the McDowell Road corridor
- B. Provide strategic support of tourism and visitor events
- C. Create and adopt a comprehensive economic development strategy
- D. Develop a transportation strategy that anticipates future needs
- E. Prepare and adopt fiscally sustainable operating and capital budgets
- F. Reinvest in a high performance organization and work culture

Changes at Scottsdale & McDowell roads: 1969-2014





What should be the priorities of the city
over the next 12-18 months?

PHOTO BY: C.E.B. IMAGERY

<http://www.scottsdaleaz.gov/council/goals>



How Our Residents Rate Scottsdale

Percent "excellent" or "good"

Quality of life



As a place to live



Appearance



City services



City employees



Value of services for taxes paid



Scottsdale Statistics Fiscal Year Ending June 30

2009

5-Year Trend

2014



Acres of land acquired for the McDowell Sonoran Preserve

25



2,365



Annual attendance at parks, community centers and libraries (in millions)

8.7



7.8

Total number of filed charges heard and resolved by the City Court

137,887



83,441

Responses by the Fire Department to calls for emergency services

23,953



28,544

Average Fire Dept. travel time to calls for emergency services (in minutes)

4:23



4:27

Total crimes per thousand (Scottsdale Uniform Crime Report, Part 1) *

34.3



27.8

Average Police Department response time to emergency calls (in minutes)

5:07

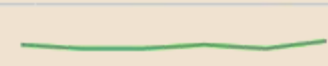


5:04



Drinking water supplied (million gallons per day)

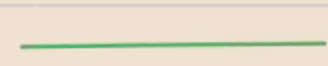
69.4



70.2

Homes serviced by residential trash and recycling collections

78,607



80,354



New jobs created in targeted industries

394



1,069

Average hotel occupancy rate

59%



66%



Total citywide transit ridership (in millions)

3.5



2.6

Scottsdale Airport takeoffs & landings

169,972



142,248



Maintained landscaped medians and rights of way (in millions of square feet)

17.0



22.5

Maintained city facilities (in millions of square feet)

2.3



3.3



ScottsdaleAZgov

Posted by Scotty Scottsdale [?] · 23 hours ago

How do we compare with neighboring cities? Scottsdale's tax rates are among the lowest of the larger cities.



Unlike · Comment · Share · Buffer



ScottsdaleAZgov, Heidi Greasby, Amanda Coe, Jessica Lee Miller and 4 others like this.

Top Comments ▾



Write a comment...



Estimated City Property Tax on a \$250,000 House

Source: City budget offices.
Based on adopted FY 2014/15 rates.



Tempe
\$609



Glendale
\$538



Phoenix
\$455



Peoria
\$360



Scottsdale
\$311



Mesa
\$296



Chandler
\$295



Gilbert
\$266

Estimated City Sales Tax on a \$25,000 Car

Source: Arizona Department of Revenue As of Aug. 1, 2014



Glendale
\$550



Phoenix
\$500



Tempe
\$450



Peoria
\$450



Mesa
\$438



Scottsdale
\$413



Chandler
\$375



Gilbert
\$375

Monthly Residential Utility Bill

Source: City of Tempe. Typical water, garbage and sewer charges as of July 2014



Mesa
\$100



Glendale
\$82



Phoenix
\$77



Tempe
\$70



Peoria
\$69



Scottsdale
\$69

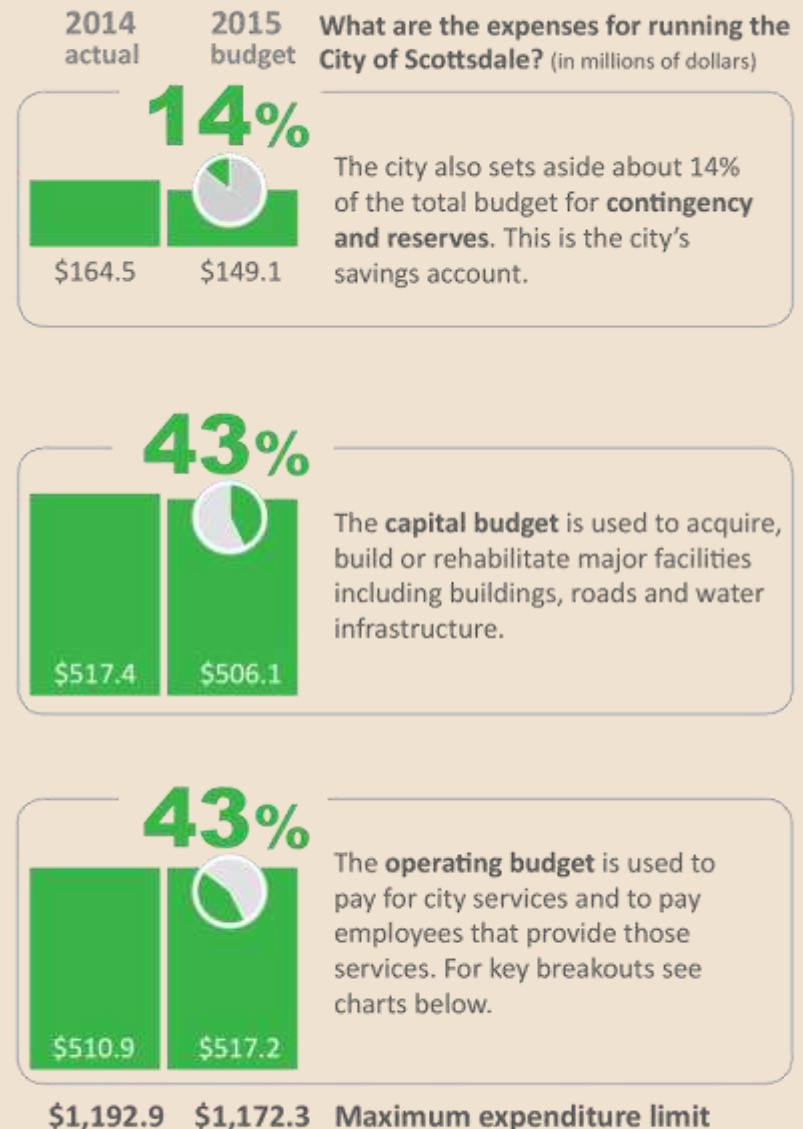
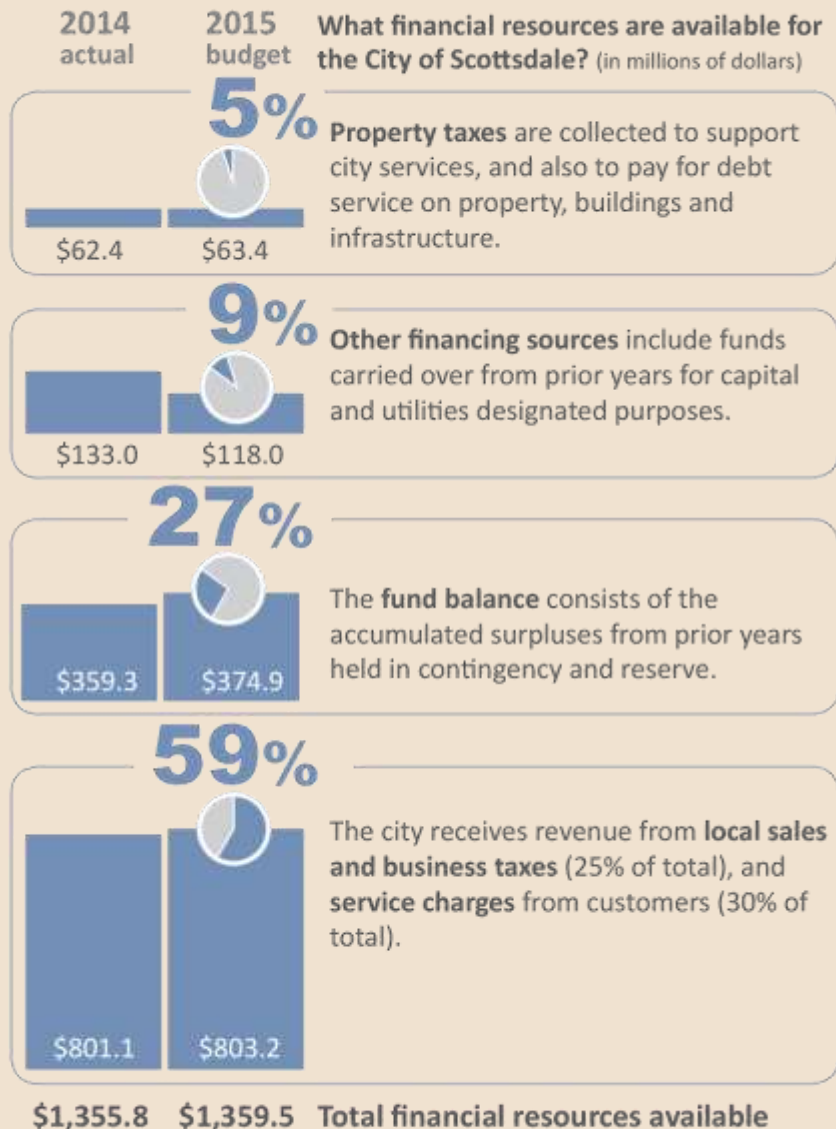


Gilbert
\$63

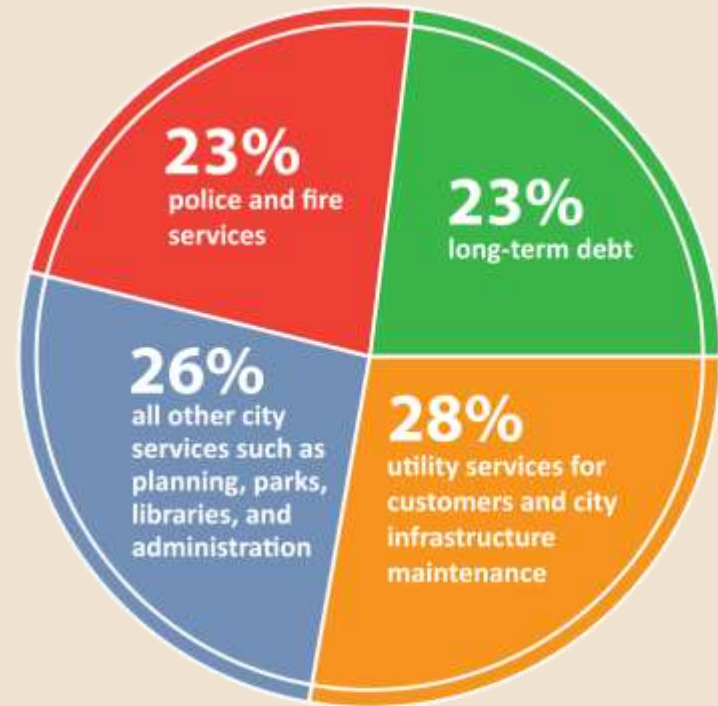


Chandler
\$63

Scottsdale is required by law to adopt a budget each year, and cannot spend more than that total amount.



Two looks at the total operating budget







City of Scottsdale (Official)

Shared publicly · 8:37 AM

#Scottsdale

Scottsdale's major employers are a diverse mix

Scottsdale Healthcare leads the way, followed by a variety of technology, financial companies and local governments.

See more reports & documents in our "About Scottsdale" page:
<http://www.scottsdaleaz.gov/about>

#Scottsdale



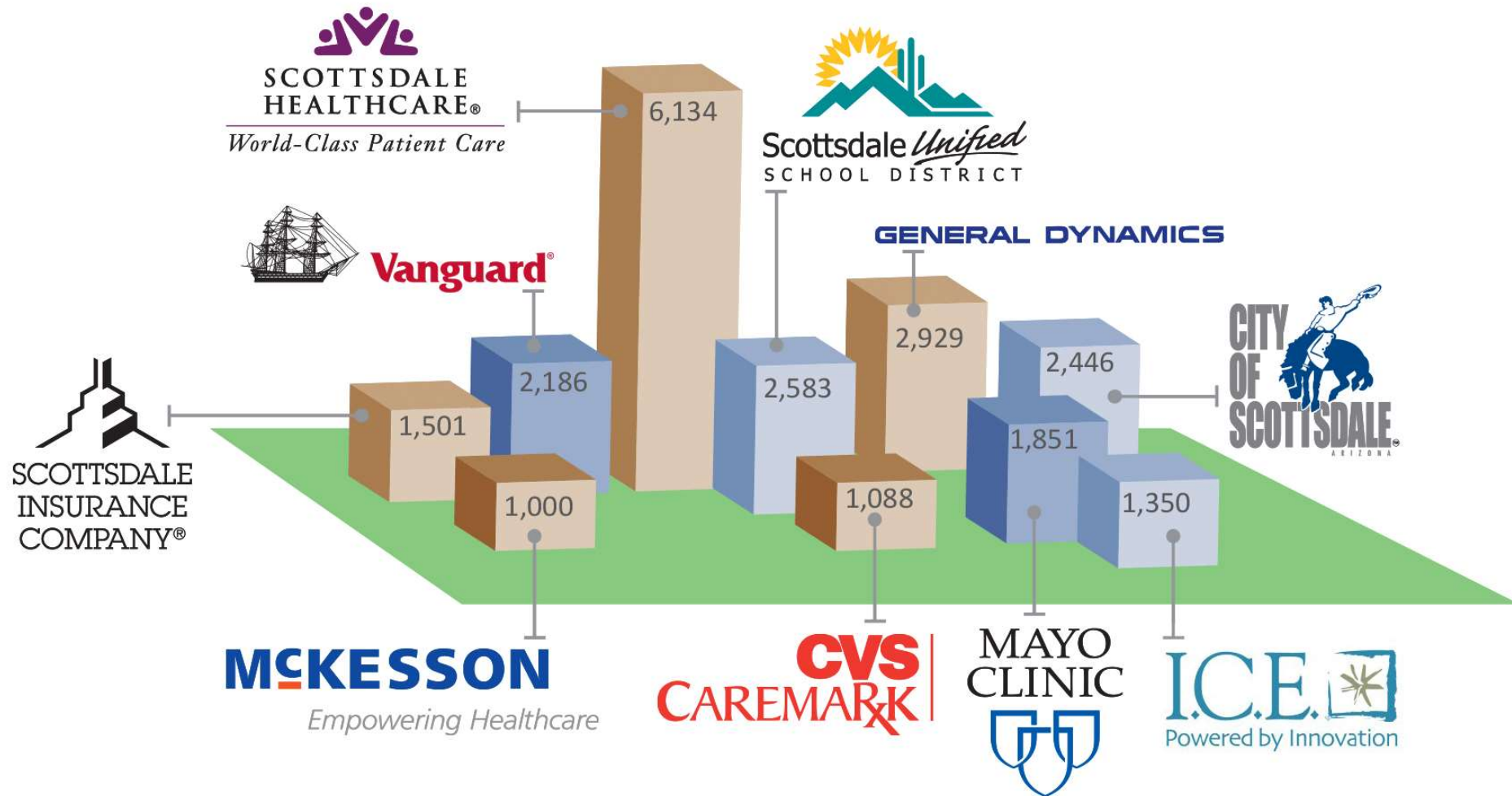
+1




Add a comment...

Scottsdale's major employers

Number of employees as of June 2014





**Don't know where to go?
480-312-3111**



<http://www.scottsdaleaz.gov/about/>

