

Central Arizona Project Canal/100th Street Path



Corridor Improvement Study

Corridor Information

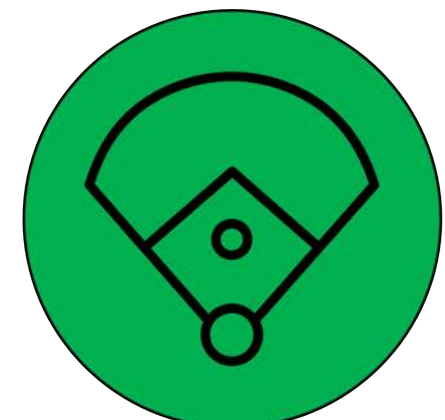
The City of Scottsdale is conducting a study to evaluate connectivity improvements for pedestrians and bicyclists to 100th Street and the Central Arizona Project (CAP) Canal pathway. The corridor extents are the intersection of 100th Street & Frank Lloyd Wright Boulevard to the intersection of 92nd Street & Frank Lloyd Wright Boulevard. The CAP canal runs parallel to 100th Street offset approximately 1,100 feet northeast.



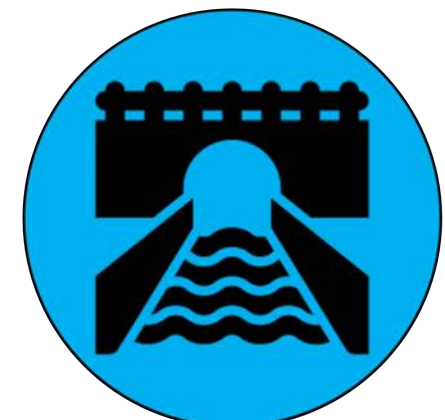
The 100th Street corridor is roughly **1.5** miles long with a **5-lane** cross-section.



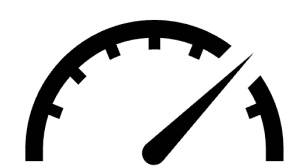
100th Street supports a capacity of **29,000** vehicles. A daily traffic volume of **8,040** vehicles per day was recorded in November 2023. 100th Street is currently underutilized at a capacity of **28%**.



The surrounding area includes **recreational parks, commercial businesses, schools,** and a **library**.

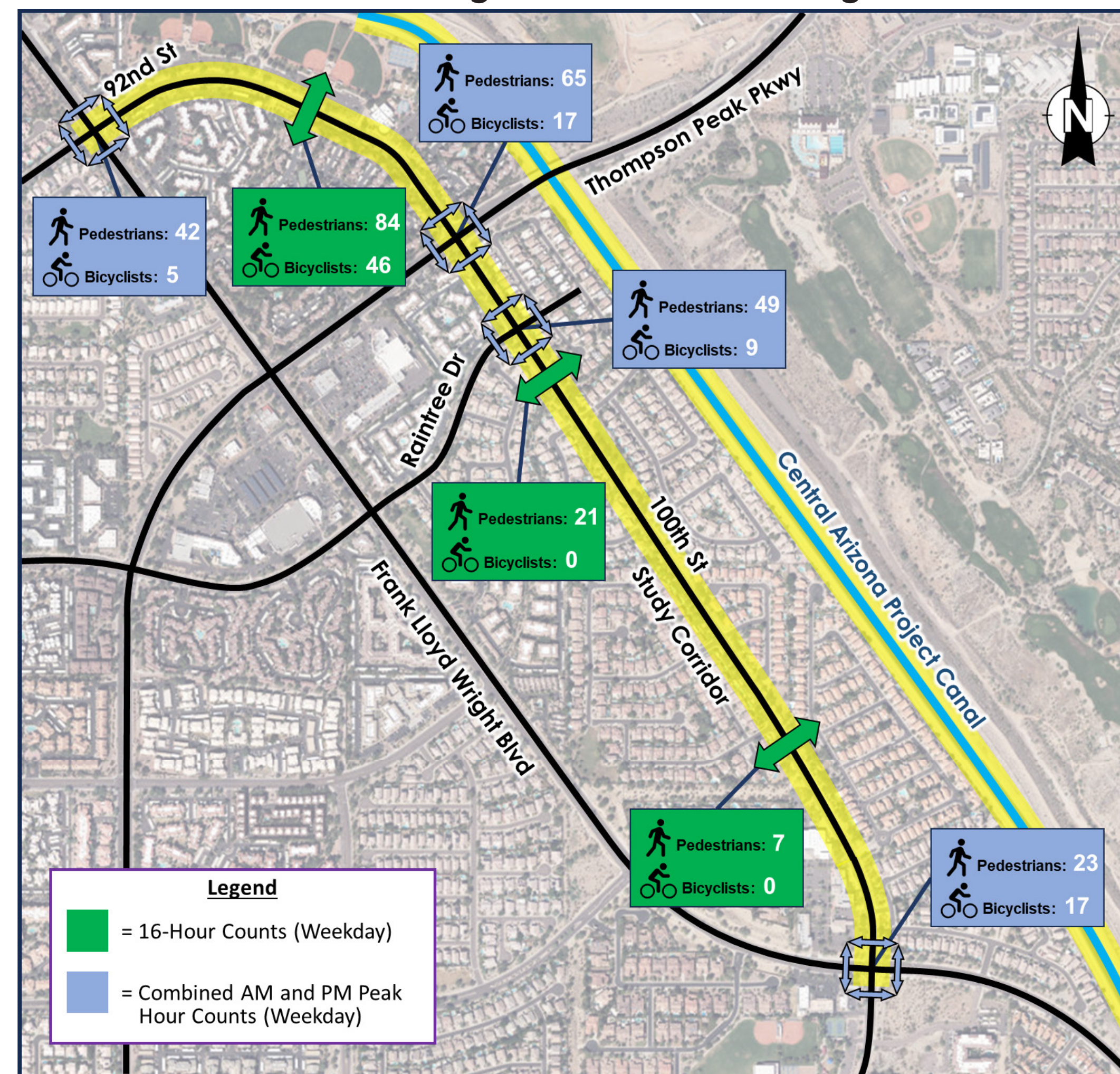


The **CAP Canal** provides an off-street path that connects to the Scottsdale bike and trail network. The path is also part of a planned regional connection.



Posted Speed Limit: **35 mph**
 EB 85th Percentile Speed: **44 mph**
 WB 85th Percentile Speed: **45 mph**

Pedestrian & Bicyclist Weekday Volumes



*Volumes collected in November 2023

100th Street Cross-Section (6'-10'-10'-13'-10'-10'-6')



100th Street Midblock Pedestrian Crossing



100th Street Crash Statistics



115 total crashes within the study area

which equals approximately 23 crashes per year



2 crashes involved pedestrians or bicyclists

both located at the intersection of 92nd Street & Frank Lloyd Wright Boulevard



26 crashes were speed-related

which makes up approximately 23% of all crashes along the corridor



102 crashes occurred at signalized intersections

which accounts for approximately 89% of all crashes within the study area



3 crashes resulted in serious injuries

and 19 crashes resulted in minor injuries for those involved

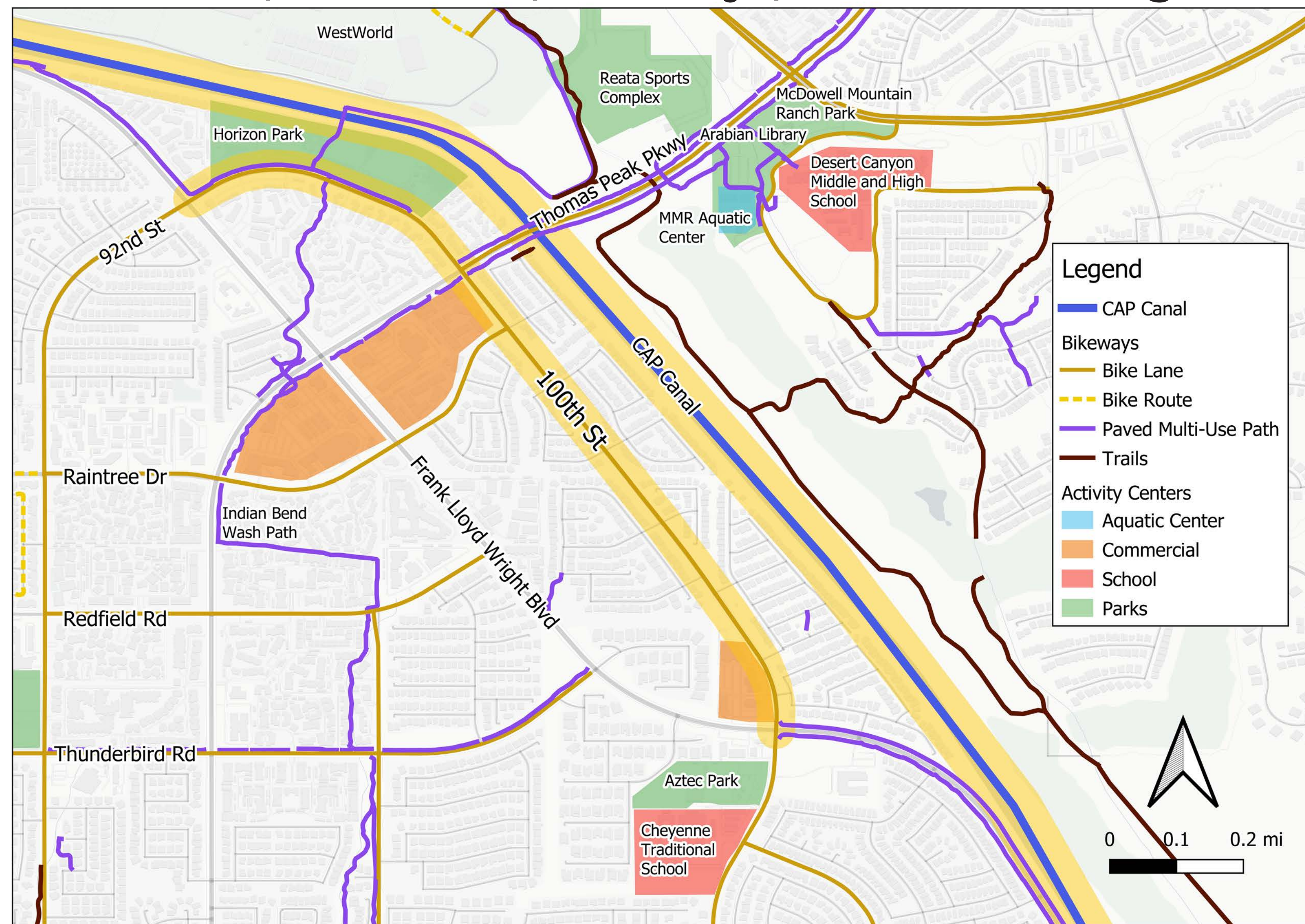
Central Arizona Project Canal/100th Street Path



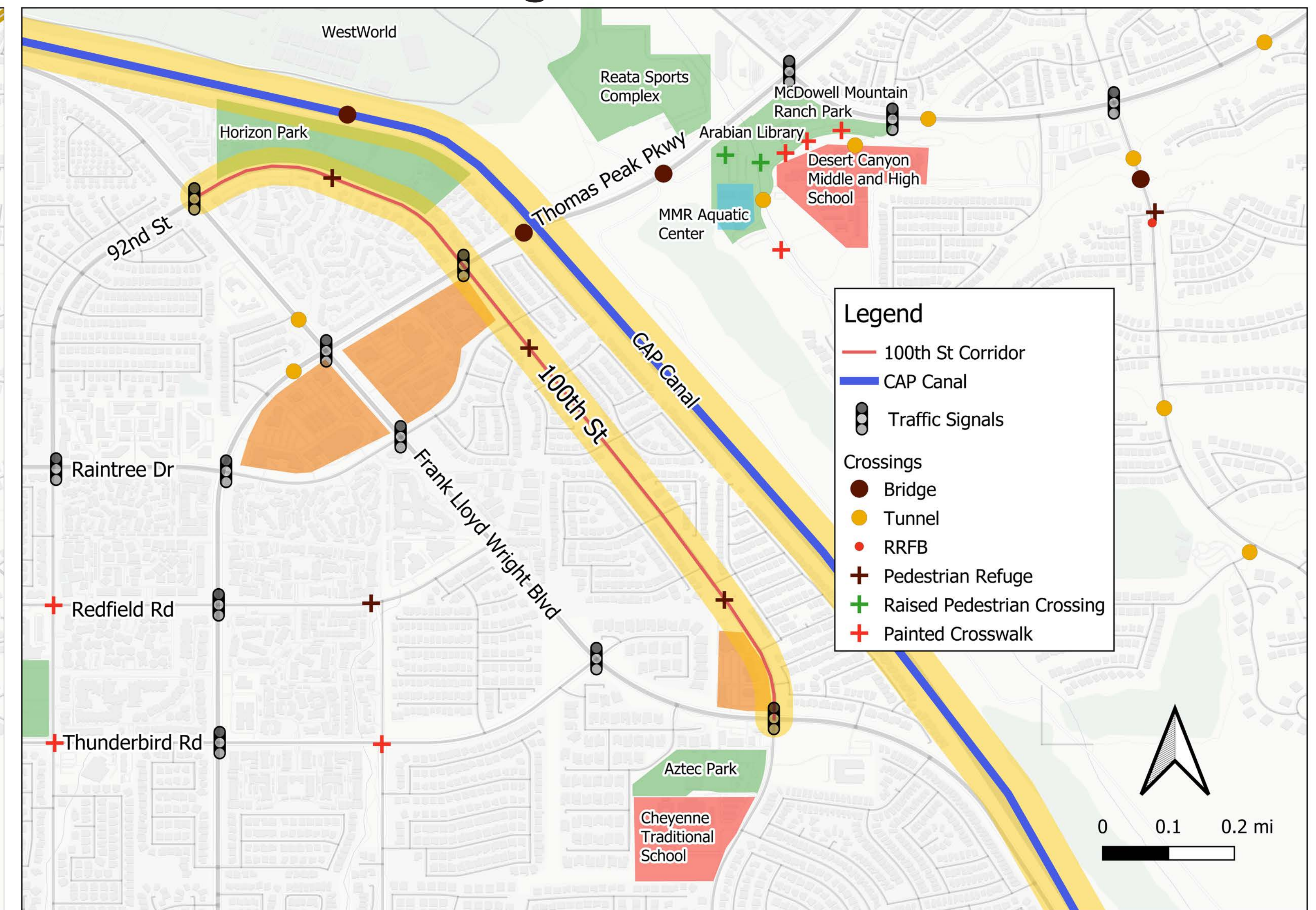
Corridor Improvement Study

Study Area Maps

Sidewalks, Bike Lanes, Pathways, and Surrounding Area



Traffic Signals and Crosswalks



Central Arizona Project Canal/ 100th Street Path

Corridor Improvement Study



Where do you want to walk or bike?

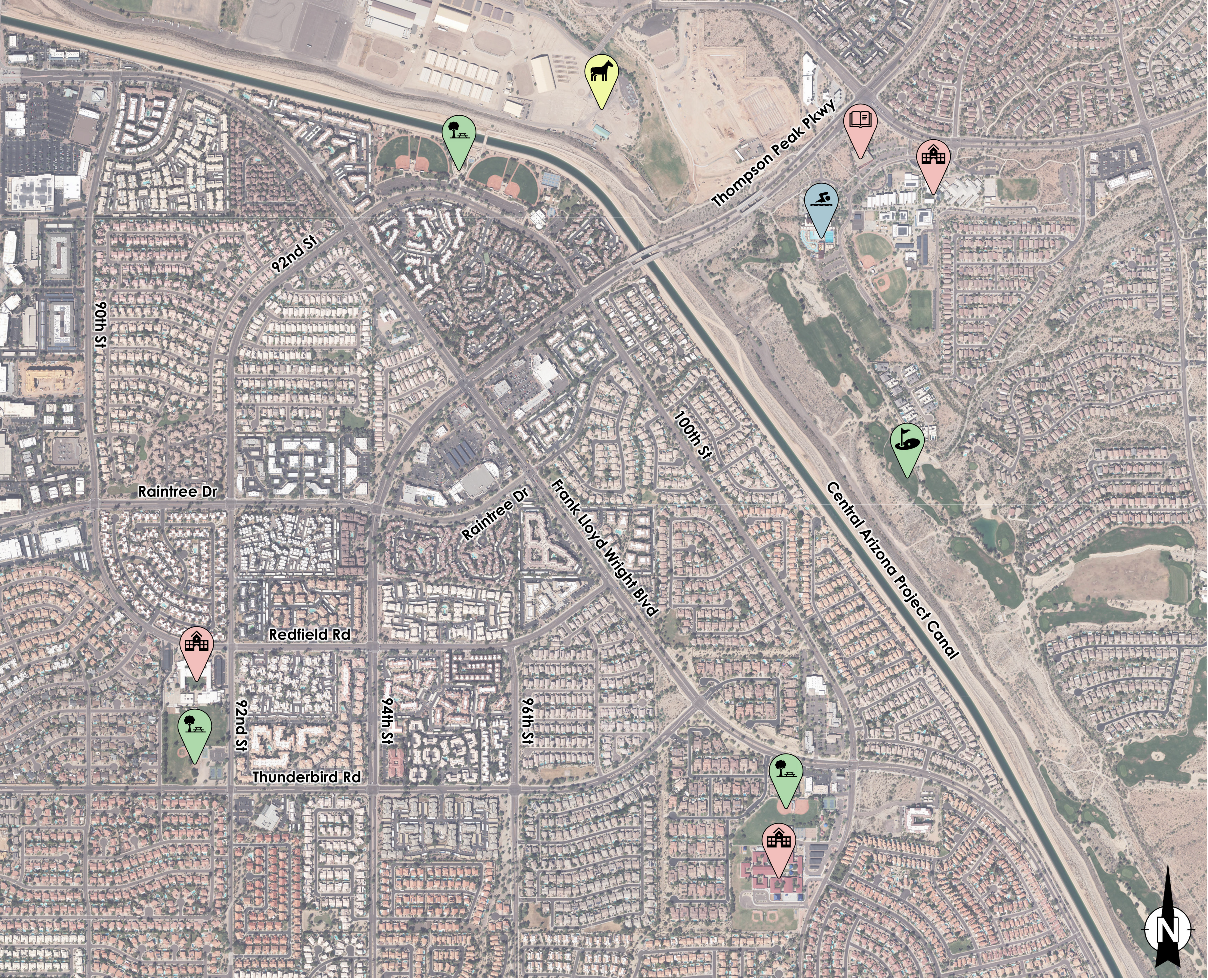
Please mark on the map where you would start and end your trip.

If your trip begins or ends outside of the map, indicate the point where you would enter/exit the map area.

LEGEND

ORIGIN:

DESTINATION:



Central Arizona Project Canal/100th Street Path



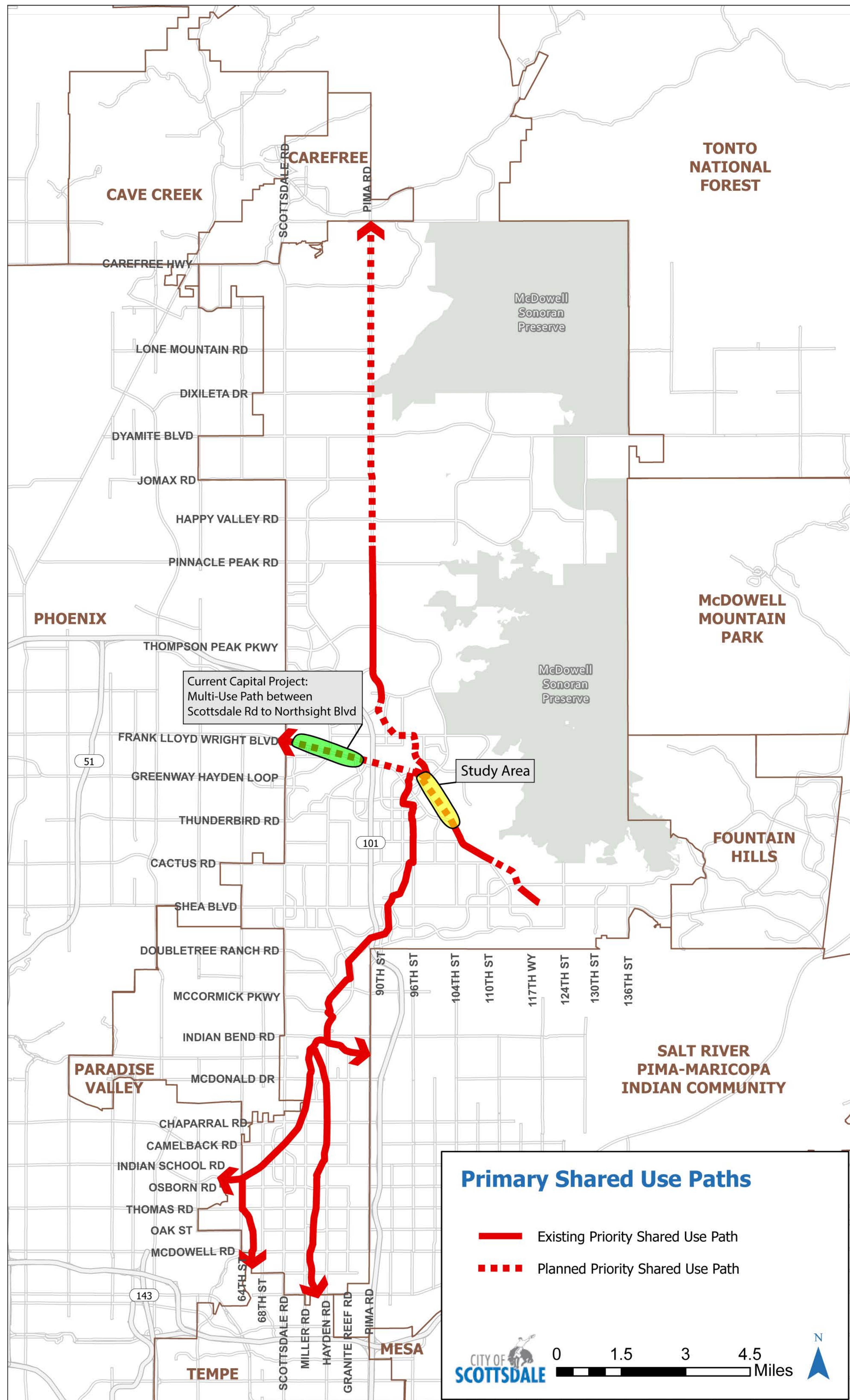
Corridor Improvement Study

Please identify your Top 5 preferences for potential changes in the area

	Canal Path Improvements			Multi-Use Side Path	
	Wayfinding Signs			Curb Extensions to Shorten Crossings	
	Speed Feedback Signs			Raised Crosswalks	
	Median Islands			Pedestrian Beacons / Signals	
	Seating			Street Lights	
	Buffered Bike Lanes			Trees / Shade Structures	
	Separated Bike Lanes			Other (Please use a sticky note to write your thoughts)	

Bikeway Element - Primary Shared Use Paths

Three primary shared use paths serve as the spine and main linkages throughout Scottsdale: the Indian Bend Wash (IBW) Path, the Crosscut Canal Path/Arizona Canal Path and the Central Arizona Project (CAP) Canal Path. Each provides local and regional connectivity and is a high priority for implementation.



Indian Bend Wash (IBW) Path:

The IBW path runs north/south and links to the city of Tempe and the town of Carefree. Approximately 15 miles of path exist from McKellips Road to the WestWorld area, which is the approximate center point of the IBW Path. The northern section is approximately 13 miles long, of which 3.5 miles is constructed between Trailside View and Pinnacle Peak Road, while the rest is planned.

Central Arizona Project (CAP) Canal Path:

As part of a regional planned path, Scottsdale's 9.2-mile planned path runs along the south side of the CAP Canal, primarily along adjacent developed land. Approximately 2.2-miles of the path are complete east of Loop 101 along the Frank Lloyd Wright Blvd. corridor. This path connects to city of Phoenix and the Salt River Pima-Maricopa Indian Community.

Crosscut Canal Path / Arizona Canal Path:

The 1.8-mile Crosscut Canal Path connects to a path in Tempe and to the 5.8-mile Arizona Canal Path, which connects to Phoenix and the Salt River Pima Maricopa Indian Community. Both canals are paved throughout Scottsdale.

Central Arizona Project Canal/100th Street Path



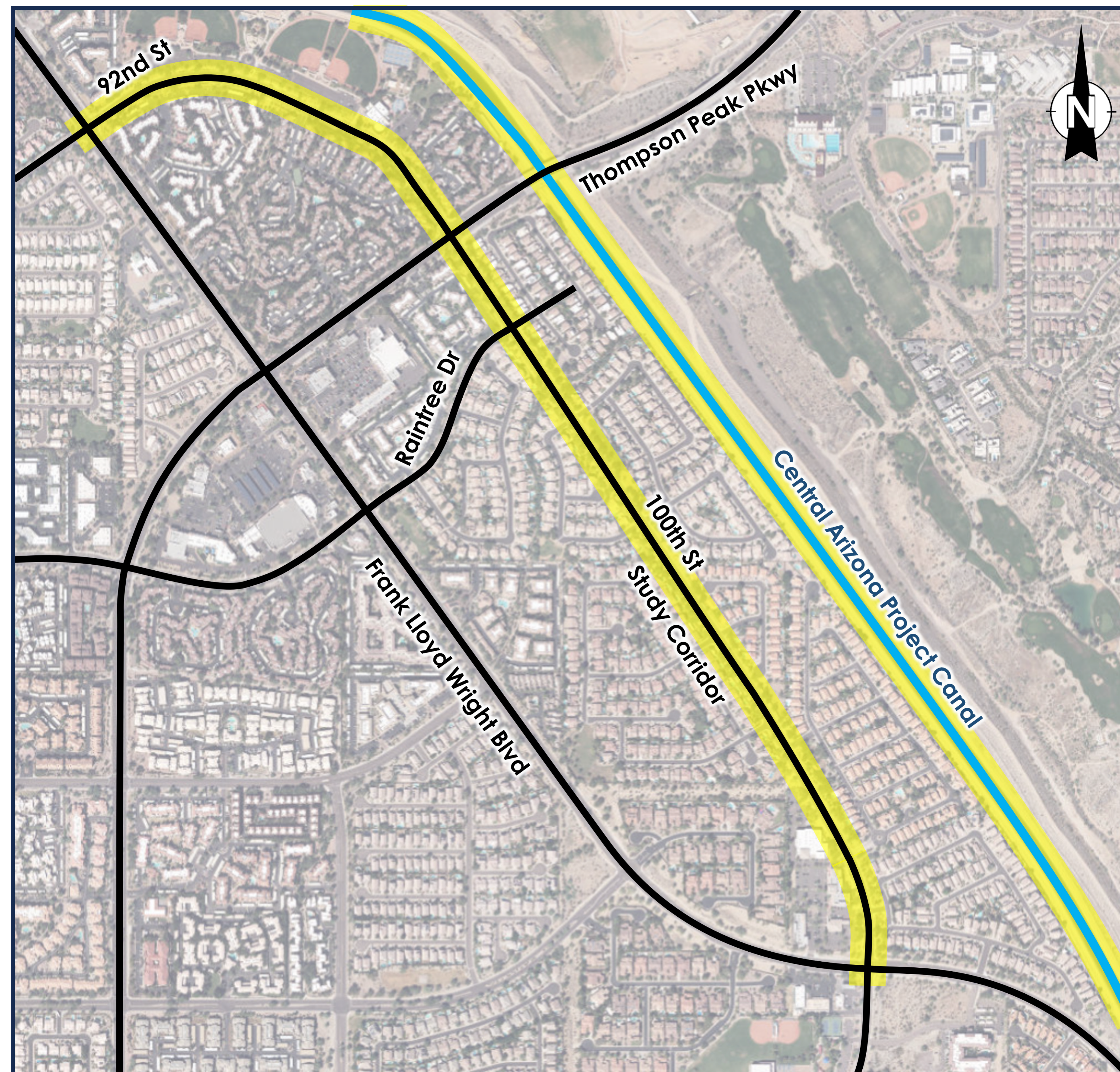
Corridor Improvement Study

Study Purpose and Schedule

The study will evaluate a 2-mile segment of the planned Central Arizona Project (CAP) Canal shared use path corridor including a 1.5-mile path along the east side of the 100th Street from the intersection of 100th Street and Frank Lloyd Wright Boulevard.

Potential bike and pedestrian improvements will be evaluated along the corridor and design concept drawings will be created to support them.

The study is funded by the Maricopa Association of Governments Design Assistance Program with Y2K Engineering serving as the study consultant.



There will be another set of public open house meetings in Spring 2024 when the draft study is completed.

After the study is complete, further design, construction, or implementation of any recommended improvements would require additional funding, public input, planning, and council approval.

For more information:
Go to [ScottsdaleAZ.gov](https://scottsdaleaz.gov), and search "Bike and Pedestrian Study"

Questions? Please contact:
Susan Conklu at
SConklu@ScottsdaleAZ.gov

