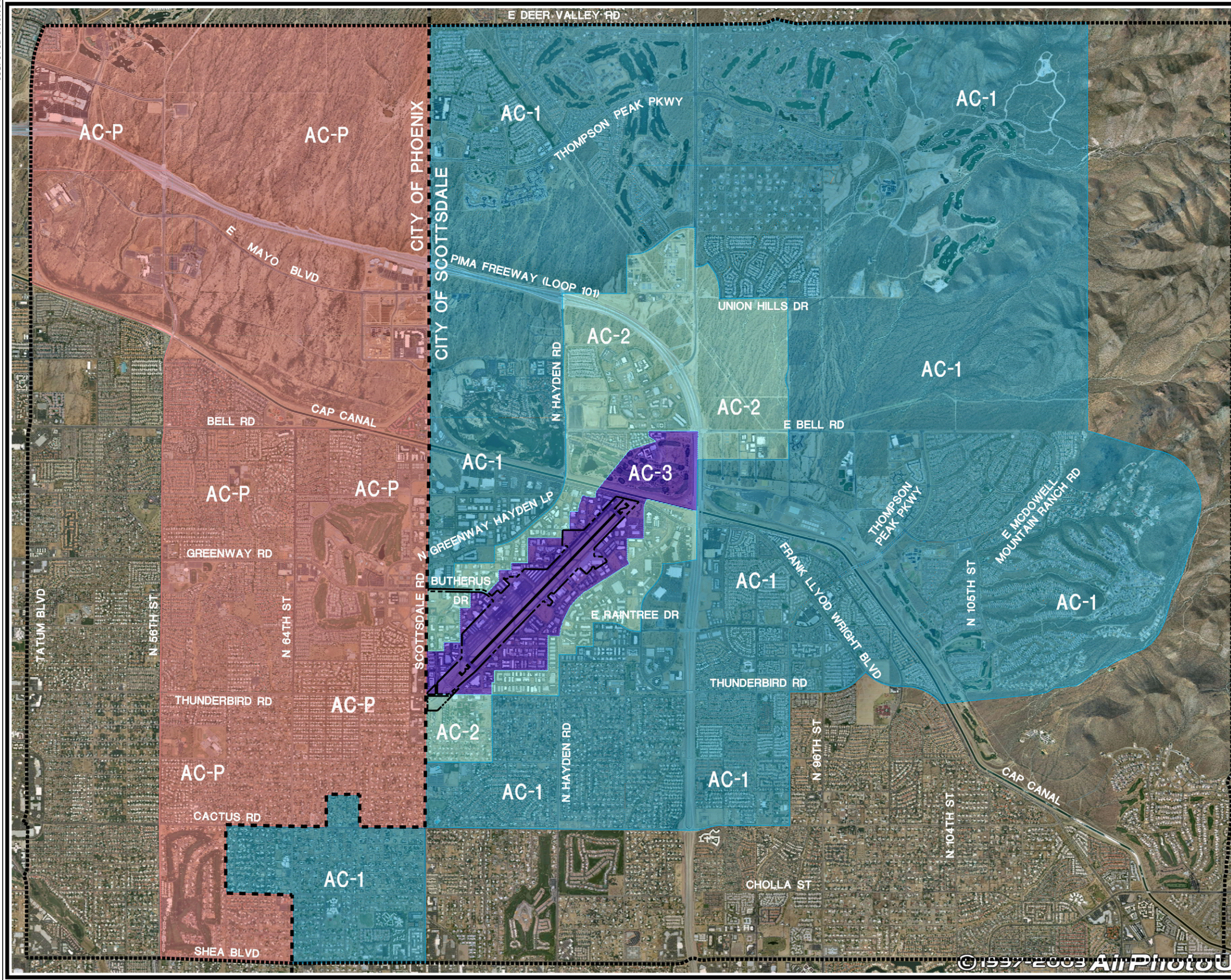


08SP01-6D-07/07/04



- LEGEND**
- Detailed Land Use Study Area
 - - - - - Municipal Boundary
 - Airport Property
 - AC-P
 - AC-1
 - AC-2
 - AC-3

Source: Coffman Associates Analysis.
 Photo: Todd Photographics Service,
 30 April 2004.



© 1997-2003 AirPhotoU

Exhibit 6D
RECOMMENDED AIRPORT INFLUENCE
AREA AND NOISE OVERLAY ZONES