

64th Street Crossing Study

Open House No. 1

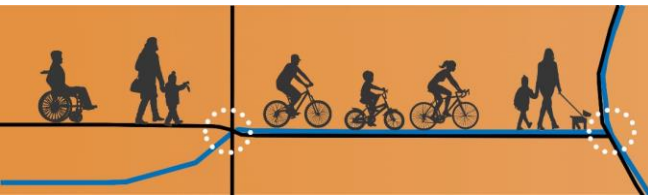
MAG Study
15% Concept
Design

TYLin



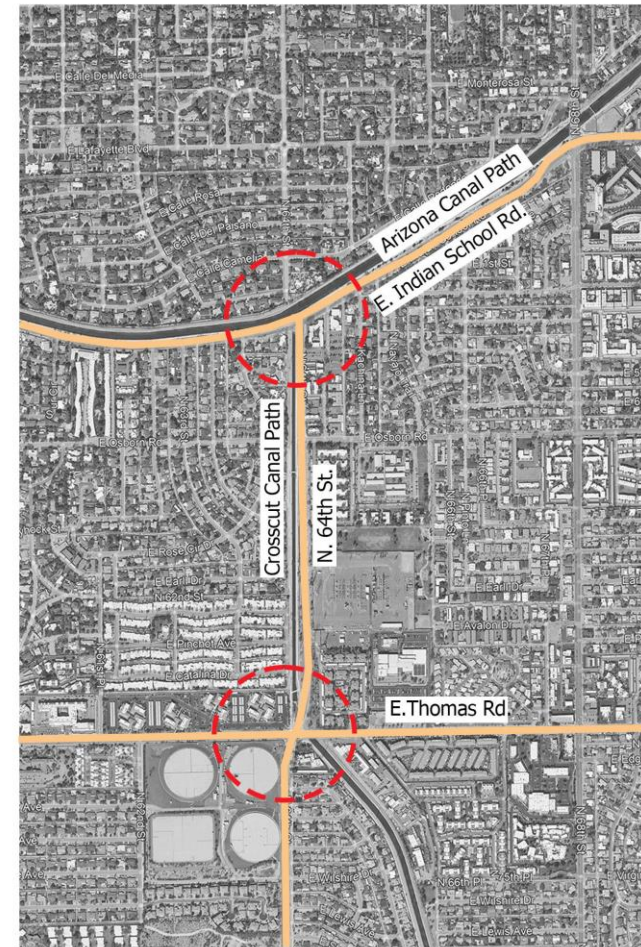
Project Overview

- ❖ MAG - Maricopa Association of Governments funding this study through the Design Assistance program.
- ❖ The consultant team includes T.Y.Lin International (primary consultant) and Harrington Planning + Design (sub-consultant).
- ❖ Gathering input from public to assist in ideas for concept solutions.
- ❖ Improve safety and circulation for bicyclists and pedestrians at the intersections of 64th Street and Thomas Road and 64th Street and Indian School Road.
- ❖ Connects existing multi-use path facilities at Arizona Canal and Crosscut Canal.
- ❖ Support the Council Adopted Transportation Action Plan



Study Area

This project focuses on the intersections of 64th St. and Thomas and 64th St. and Indian School and the circulation of pedestrians and bicyclists along the existing facilities in those areas.



64th Street
Crossing Study



Study Considerations For 64th Street Intersections



Increase bicycle and pedestrian comfort & Safety



Adopt accessibility standards creating inclusive built environments



Reduce vehicle turning speeds



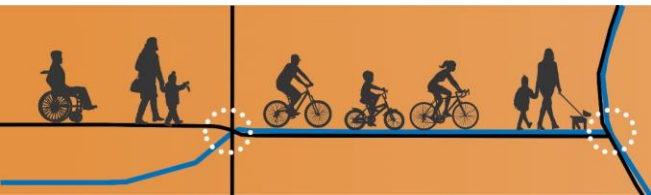
Provide biking and walking connections between recreation, commerce, and residential.



Provide wayfinding/route signage for canal users



Develop corridor identity and sense of place



Existing Conditions

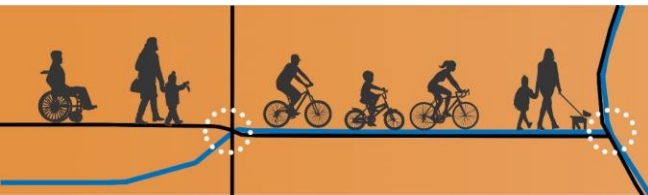
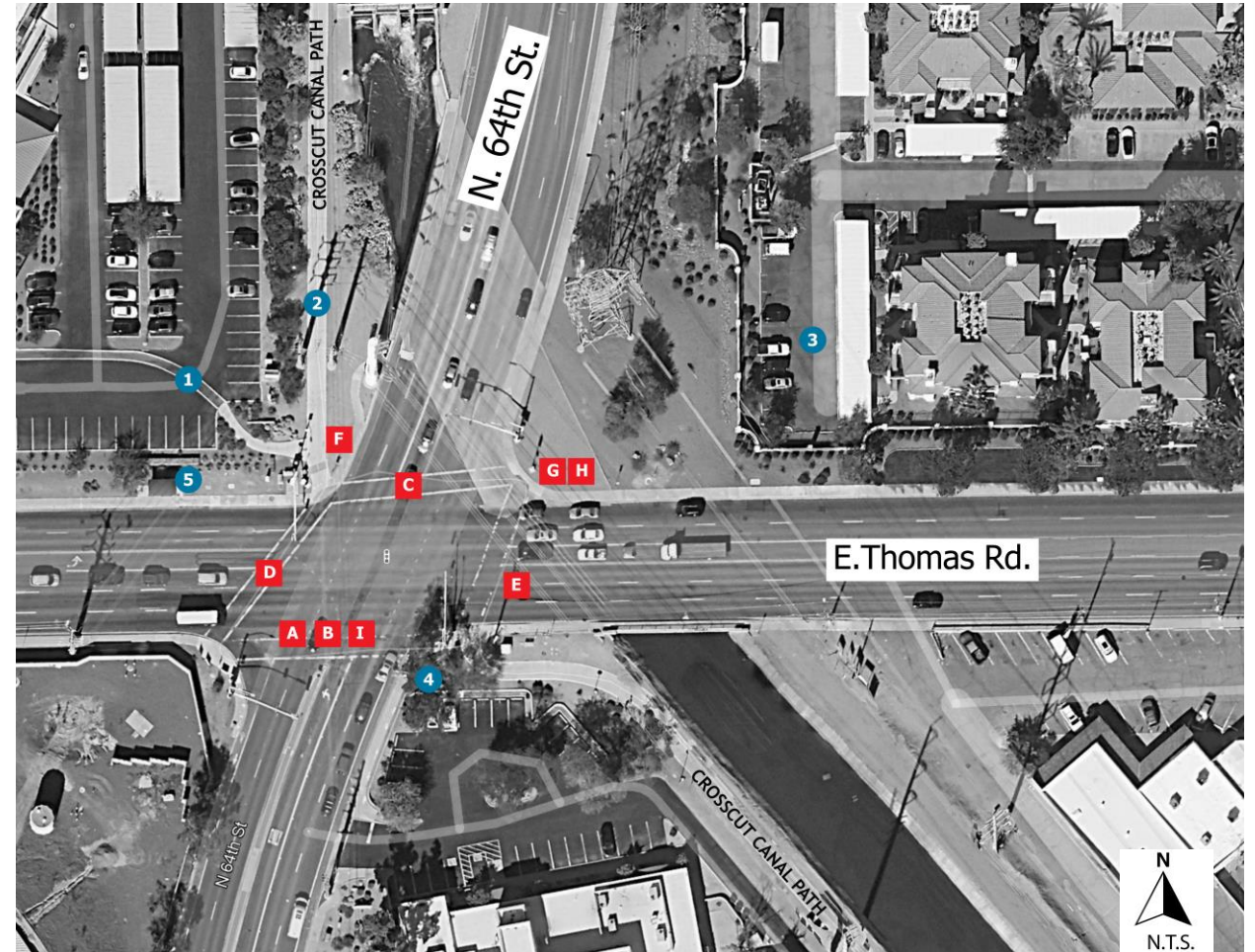
Thomas Road

Advantages:

1. Connections to nearby destinations.
2. Connections to recreation facilities.
3. Connections to neighborhoods.
4. Shade at one corner.
5. Transit Connections.

Disadvantages:

- A. Curb ramps that don't meet current design requirements.
- B. Pedestrian push button that doesn't meet current requirements for people with vision impairments.
- C. Lack of priority for vulnerable users.
- D. Extended crossing distances.
- E. Worn pavement markings.
- F. Lack of wayfinding signage for people walking and biking.
- G. Excessive turning radii.
- H. Lack of shade in queuing areas.
- I. Low contrast crosswalk.



Existing Conditions

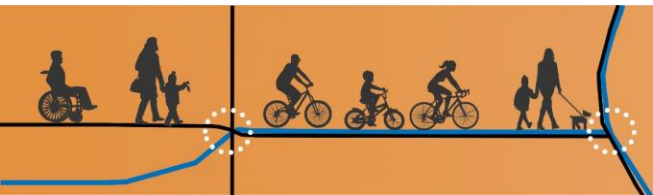
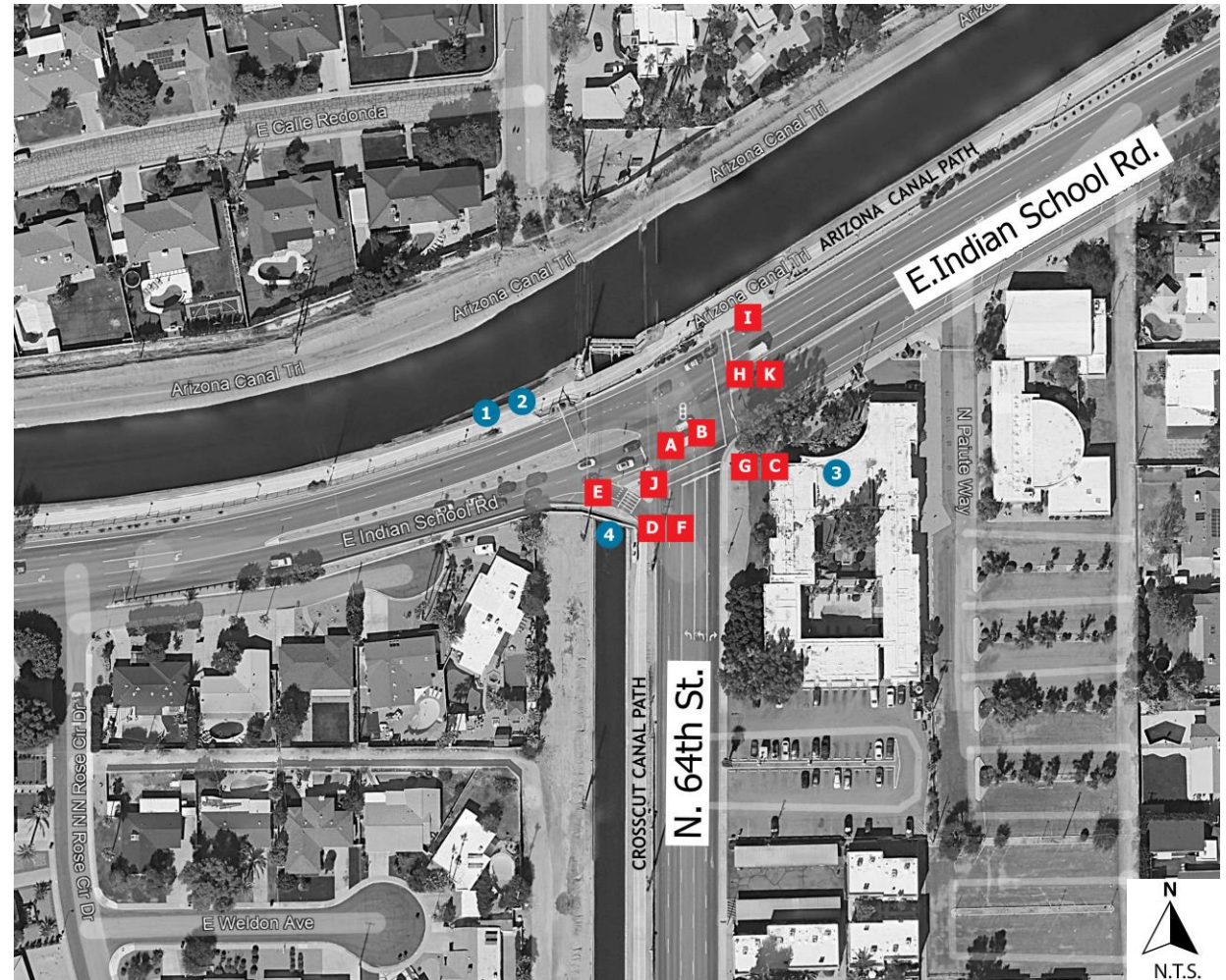
Indian School Road

Advantages:

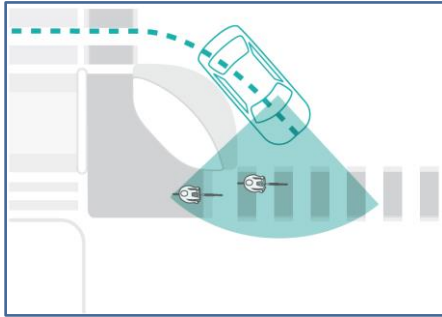
1. Connections to nearby destinations.
2. Connections to recreation facilities.
3. Connections to neighborhoods.
4. Curb ramp that meets current design requirements.

Disadvantages:

- A. Curb ramps that don't meet current design requirements.
- B. Pedestrian push button that doesn't meet current requirements for people with vision impairments.
- C. Small queuing areas.
- D. Lack of priority for vulnerable users.
- E. Incorrect pavement markings for yield markings.
- F. Lack of wayfinding signage for people walking and biking.
- G. Excessive turning radii.
- H. Low contrast crosswalks.
- I. Lack of shade at traffic stop.
- J. Lack of night lighting.
- K. Non-motorized user discomfort.



Potential Design Solutions and Elements



Protected intersection



Overpass crossing



Landscape for shade



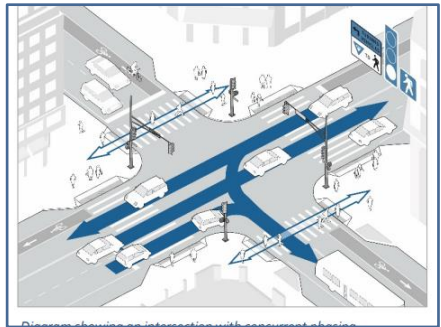
Mitigating utility-related impacts



Scottsdale wayfinding signs



High visibility crosswalk



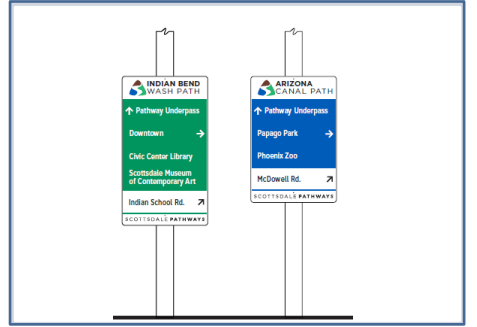
Signal Phasing Changes



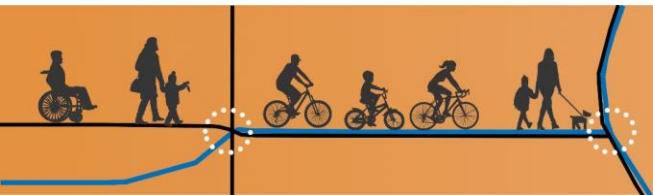
Shade structure and amenities



Potential off-street route solution



Post signs



Public Input

1

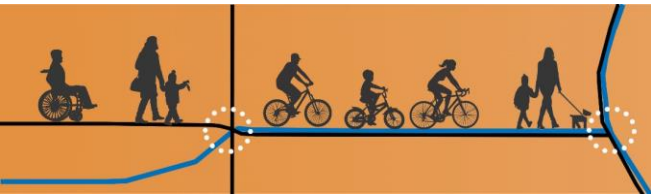
View meeting information on project website.

2

Complete the questionnaire.

3

Attend Public Meeting #2 tentatively Spring 2024.



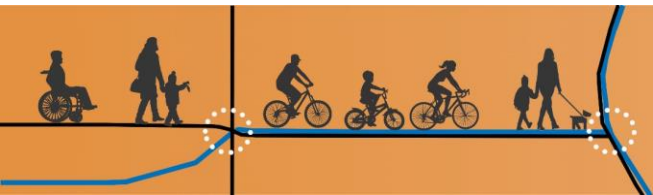
Next Steps



- ❖ Collect and review public input
- ❖ Develop 15% concept design with Alternatives
- ❖ Draft Project Assessment Report
- ❖ Open House #2: gather public input
on draft project assessment report

Post Study Steps:

Evaluate all planned improvements and studies to determine priority and funding

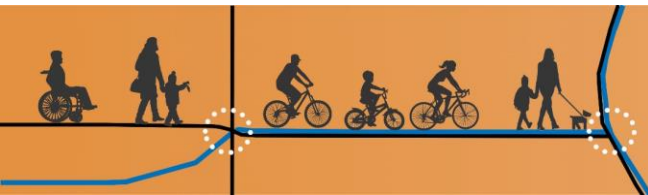
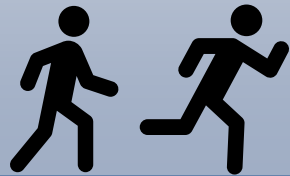


Visit ScottsdaleAZ.gov, and search “Bike and Pedestrian Study” to see meeting materials and complete the survey online.

Thank you !

MAG Study
15% Concept
Design

If you have questions,
please contact:
Susan Conklu
Email: sconklu@scottsdaleaz.gov
Phone: 480-312-2308
Senior Transportation Planner
City of Scottsdale
Transportation Department



64th Street Crossing Study

