

Welcome to the City of Scottsdale!

Scottsdale City Manager's Office





TM





to Omine
Rust
G. edie + H. B.
3 2002







Batter in a ready stance at home plate.

Pitcher on the mound.

LAW
64

SANCHEZ
29

Advertisements on the outfield fence including "PLAY TO WIN" and "N.T.V.A."









LEFT SWIM NO DIVING











Scottsdale City Council

Charter Officers



Jim Thompson
City Manager



Bruce Washburn
City Attorney



Sharron Walker
City Auditor



Carolyn Jagger
City Clerk



Jeff Nichols
City Treasurer



Joseph Olcavage
Presiding Judge

**Value Scottsdale's
Unique Lifestyle
and Character**



**Advance
Transportation**

**Seek
Sustainability**



**Scottsdale's
Strategic
Goals**



**Support
Economic
Vitality**

**Preserve
Meaningful
Open Space**



**Enhance
Neighborhoods**

6 Council Members ○

○ 6 Appointed Officers

1 Mayor ○

**SCOTTSDALE'S
249,950
CITIZENS
ARE SERVED BY**

● 163 Boards & Commission Members

● 538 Part-time Employees

● 2,156 Full-time Employees

● 5,013 Volunteers

Where do Scottsdale City Employees work?

Water Campus

North Corporation Yard

Civic Center

Witzeman Public
Safety Building

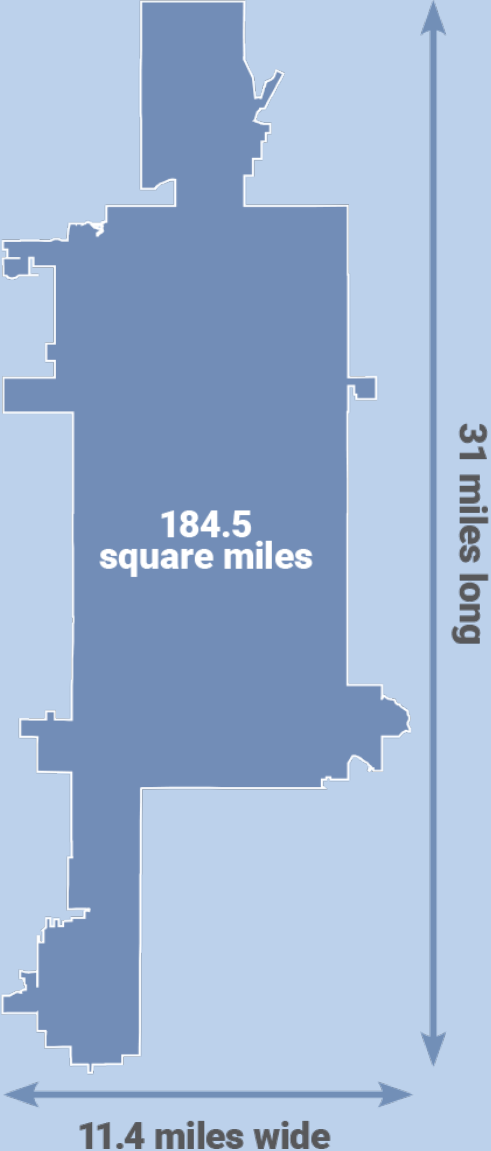
LOOP
101

South Corporation Yard



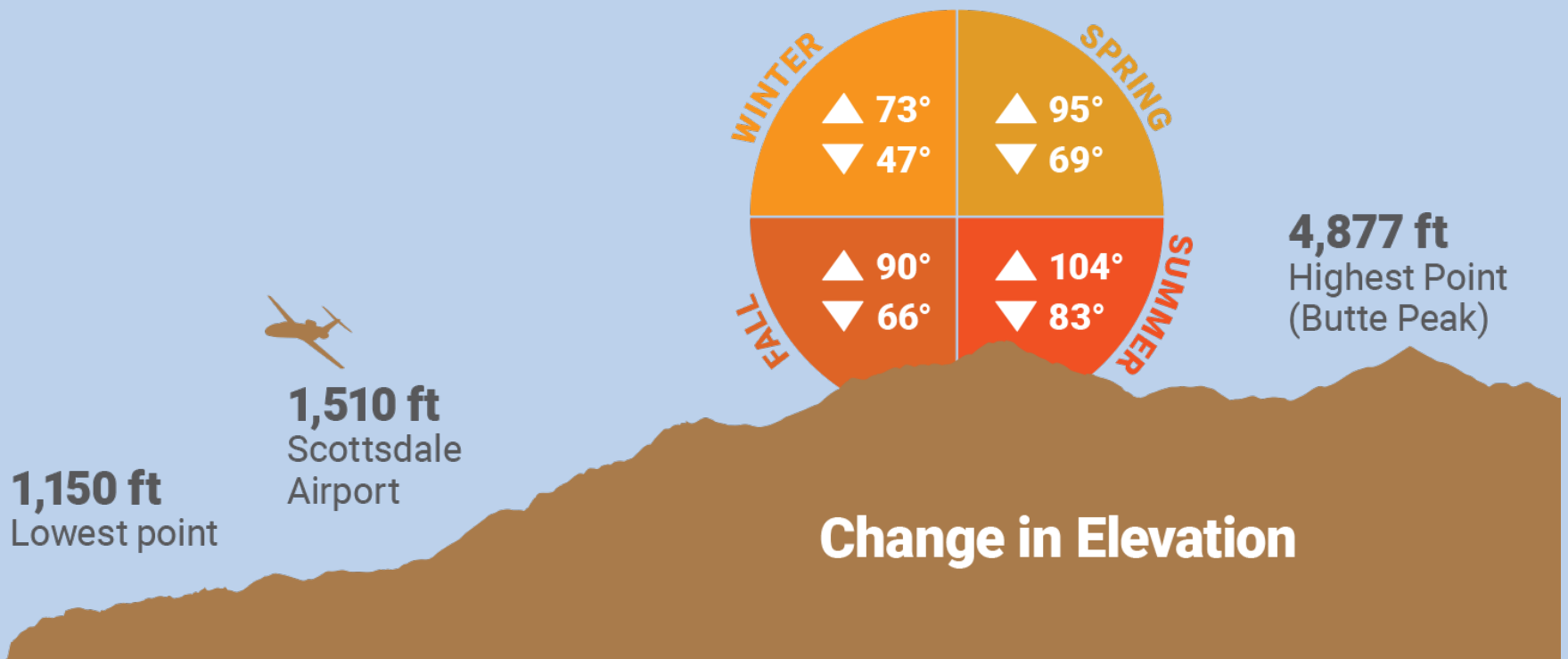
Scottsdale is the 45th largest city in the U.S. by area.

Source: U.S. Census and City of Scottsdale (2010)



Scottsdale's elevation rises by nearly 4,000 feet from south to north.

Source: City of Scottsdale and Scottsdale Airport Weather Station (2017-18)



Scottsdale Employee Values

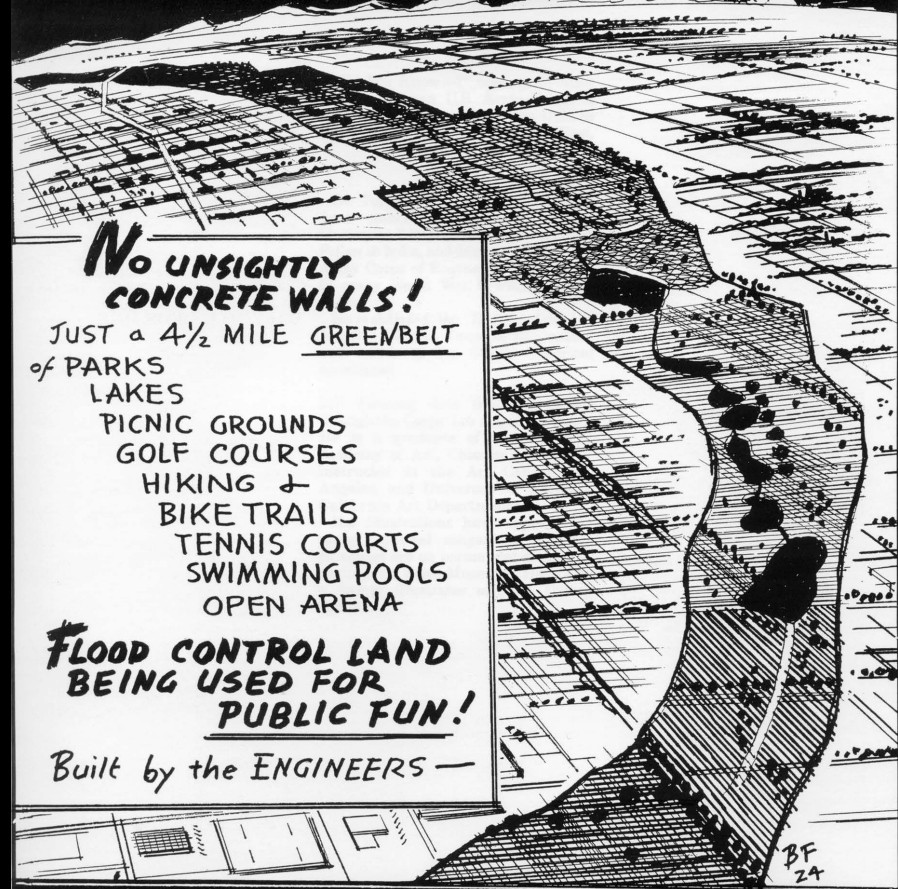
- **Be Accountable & Act with Integrity**
- **Focus on Quality Customer Service**
- **Respect the Individual**
- **Plan and Innovate for the Future**
- **Listen, Communicate, Take Action**
- **Collaborate as a Team**
- **Learn & Grow Continuously**
- **Show Caring & Compassion For Others**





Indian Bend Wash

SCOTTSDALE, ARIZONA



**No UNSIGHTLY
CONCRETE WALLS!**

JUST a 4½ MILE GREENBELT
of PARKS

LAKES

PICNIC GROUNDS

GOLF COURSES

HIKING &

BIKE TRAILS

TENNIS COURTS

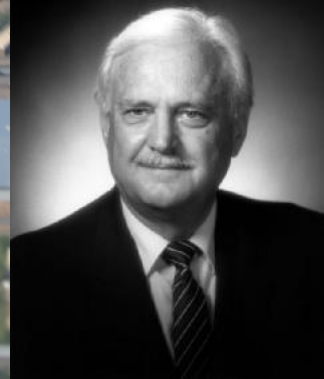
SWIMMING POOLS

OPEN ARENA

**FLOOD CONTROL LAND
BEING USED FOR
PUBLIC FUN!**

Built by the ENGINEERS —

**FIRST NON-STRUCTURAL FLOOD CONTROL
SOLUTION IN THE U.S. !!**





RURAL / METRO
FIRE TEST

2

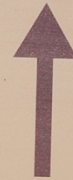






Jane Rau
Trail

0.5 mi. Loop



JANE
MASTER STEWARD
10
YEAR AWARD
NATIONAL SYSTEM OF PUBLIC LANDS
BUREAU OF LAND MANAGEMENT

Simply Better Service for a World-Class Community



70.9
MILLIONS
GALLONS
OF WATER
DELIVERED
DAILY

6 WATER
FACILITIES

54 SOLID WASTE
TRUCKS

1,468
MILES OF
SANITARY SEWERS

2,102 MILES OF WATER MAINS

4 POLICE
STATIONS **343** POLICE
VEHICLES

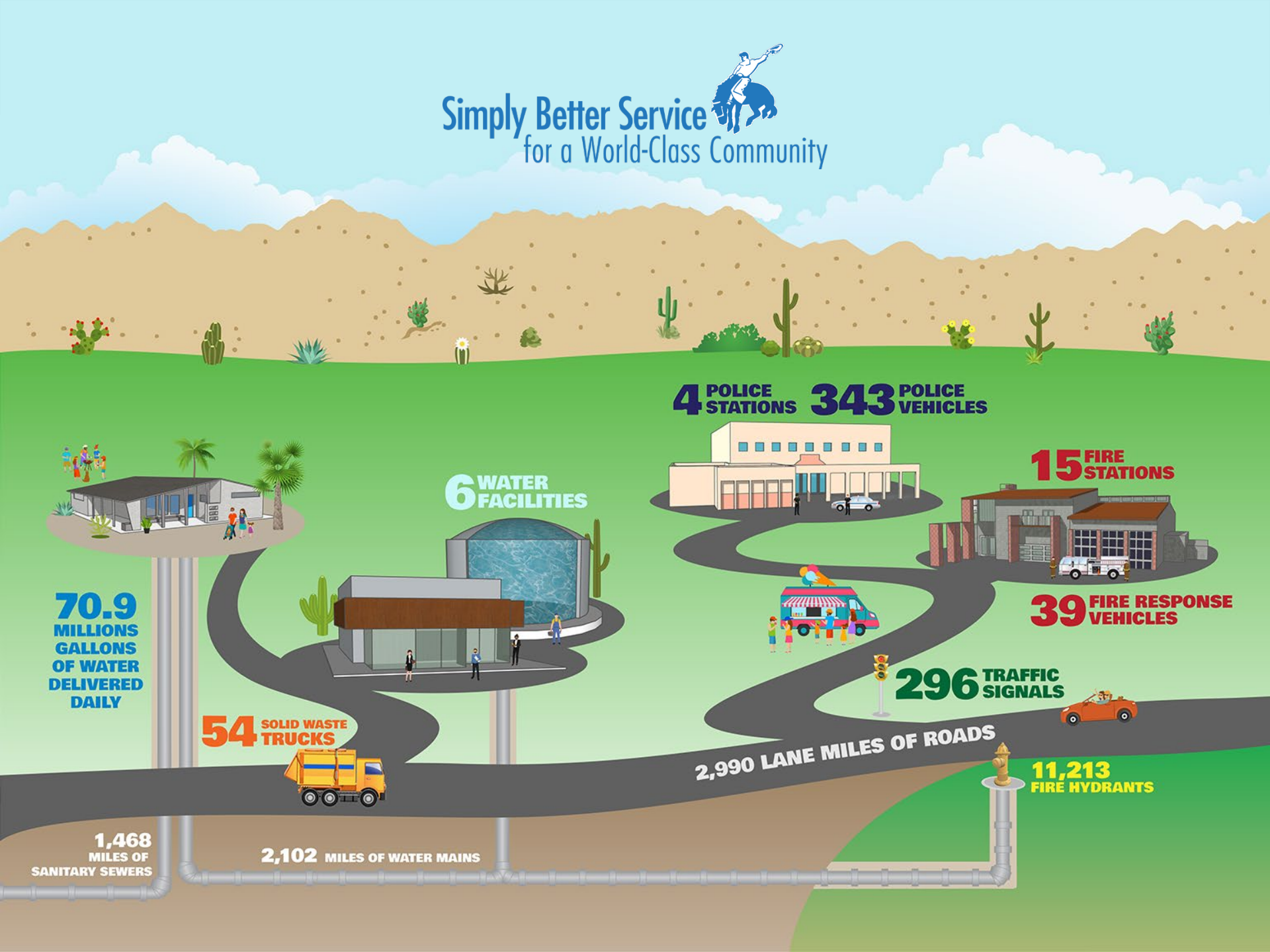
15 FIRE
STATIONS

39 FIRE RESPONSE
VEHICLES

296 TRAFFIC
SIGNALS

2,990 LANE MILES OF ROADS

11,213
FIRE HYDRANTS



Simply Better Service for a World-Class Community



42 PARKS

30,500 ACRES OF PRESERVE LAND

11 TRAILHEADS AND 215 MILES OF NON-MOTORIZED TRAILS IN THE PRESERVE

975 TOTAL ACRES

37 PLAYGROUNDS

70 ATHLETIC FIELDS

30 VOLLEYBALL COURTS

53 TENNIS COURTS
2 TENNIS CENTERS

1 RAILROAD PARK

39 BASKETBALL COURTS

3 OFF-LEASH AREAS

12 PICKLEBALL COURTS

3 EQUESTRIAN CENTERS

4 AQUATIC FACILITIES

7 SPRAY FEATURES

2 SKATE PARKS

1 BASEBALL STADIUM

50 HOTELS
8,875 ROOMS

1 AIRPORT

21,600+ BUSINESSES

150+ ART GALLERIES & ART DEALERS

6 MUSEUMS

38 PUBLIC SCHOOLS
25,847 ENROLLMENT

900+ RESTAURANTS

105 MILES OF PAVED PATHWAYS, 147 UNPAVED

4 FREE TROLLEY ROUTES

11 BUS ROUTES

2 SENIOR CENTERS

5 PUBLIC LIBRARIES

6 COMMUNITY CENTERS

280 DAYS OF SPECIAL EVENTS AT WESTWORLD

51 GOLF COURSES



Thanks for joining our team!

More info at ScottsdaleAZ.gov, search “about”



Scottsdale employees honored for performance and commitment to community in 2017