

SCOTTSDALE CITY COUNCIL  
WORK STUDY SESSION MINUTES  
TUESDAY, OCTOBER 22, 2019



CITY HALL KIVA  
3939 N. DRINKWATER BOULEVARD  
SCOTTSDALE, AZ 85251

**CALL TO ORDER**

Mayor W.J. "Jim" Lane called to order a Work Study Session of the Scottsdale City Council at 4:02 P.M. on Tuesday, October 22, 2019, in the City Hall Kiva.

**ROLL CALL**

Present: Mayor W.J. "Jim" Lane  
Vice Mayor Kathleen S. Littlefield  
Councilmembers Suzanne Klapp, Virginia Korte, Linda Milhaven,  
Guy Phillips, and Solange Whitehead

Also Present: Acting City Manager Bill Murphy Thompson, City Attorney Sherry Scott,  
City Treasurer Jeff Nichols, City Auditor Sharron Walker, and  
City Clerk Carolyn Jagger

**MAYOR'S REPORT** – None

**PUBLIC COMMENT** – None

**1. Monthly Financial Update**

**Request:** Receive, discuss, and provide possible direction on the City Treasurer's monthly financial presentation as of September 2019.

**Presenter(s):** Jeff Nichols, City Treasurer and Dave Lipinski, City Engineer

**Staff Contact(s):** Judy Doyle, Budget Director, 480-312-2603, [jdoyle@scottsdaleaz.gov](mailto:jdoyle@scottsdaleaz.gov)

City Treasurer Jeff Nichols gave a PowerPoint presentation (attached) on the City's financial status as of September 2019.

City Engineer Dave Lipinski gave a PowerPoint presentation (attached) on the status of the City's capital improvement projects.

**NOTE:** MINUTES OF CITY COUNCIL MEETINGS AND WORK STUDY SESSIONS ARE PREPARED IN ACCORDANCE WITH THE PROVISIONS OF ARIZONA REVISED STATUTES. THESE MINUTES ARE INTENDED TO BE AN ACCURATE REFLECTION OF ACTION TAKEN AND DIRECTION GIVEN BY THE CITY COUNCIL AND ARE NOT VERBATIM TRANSCRIPTS. DIGITAL RECORDINGS AND CLOSED CAPTION TRANSCRIPTS OF SCOTTSDALE CITY COUNCIL MEETINGS ARE AVAILABLE ONLINE AND ARE ON FILE IN THE CITY CLERK'S OFFICE.

**2. Status Update on the Arterial Life Cycle Program**

**Request:** Presentation, discussion, and possible direction to staff regarding the Arterial Life Cycle Program.

**Presenter(s):** David Meinhart, Senior Transportation Planner

**Staff Contact(s):** Dan Worth, Public Works Director, 480-312-5555, [dworth@scottsdaleaz.gov](mailto:dworth@scottsdaleaz.gov);  
Sylvia Dlott, CIP Budget Manager, 480-312-2419, [sromero@scottsdaleaz.gov](mailto:sromero@scottsdaleaz.gov)

Senior Transportation Planner Dave Meinhart gave a PowerPoint presentation (attached) on the City's Arterial Life Cycle Program.

A Councilmember suggested that staff consider road closures more regionally so that when there are freeway closures detour routes are not further impeded by local street closures and road construction.

**3. Residential Sewer Line Extensions**

**Request:** Presentation, discussion and possible direction to staff on the residential sewer line extension and payback programs and associated costs to homeowners.

**Presenter(s):** Brian Biesemeyer, Water Resources Executive Director; Suzanne Grendahl, Water Quality Director; and Scott Mars, Water Resources Planning and Engineering Director

**Staff Contact(s):** Brian Biesemeyer, Water Resources Executive Director, 480-312-5683, [bbiesemeyer@scottsdaleaz.gov](mailto:bbiesemeyer@scottsdaleaz.gov)

Water Resources Executive Director Brian Biesemeyer, Water Quality Director Suzanne Grendahl, and Water Resources Planning and Engineering Director Scott Mars gave a PowerPoint presentation (attached) on sewer line extensions, payback programs, and homeowner costs.

Councilmembers asked staff to return to Council with options and information on total costs to both the City and residents for a program or programs that would incentivize residents to convert from septic systems to the City sewer system, including: conducting a survey to see if residents are interested in converting their existing septic systems; capping the costs that residents pay to convert; implementing a sliding scale cap based on the size and value of the home; providing a means for neighborhoods to create a community facilities district; allowing the conversion costs to be paid over time; and holding a "sale on sewer" for a set period of time.

**MAYOR AND COUNCIL ITEMS – None**

**ADJOURNMENT**

The Work Study Session adjourned at 6:01 P.M.

**SUBMITTED BY:**



Carolyn Jagger  
City Clerk

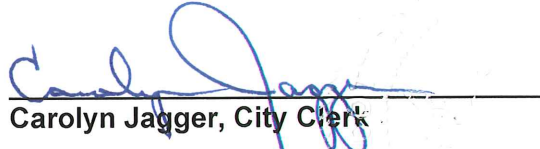
Officially approved by the City Council on November 12, 2019

**C E R T I F I C A T E**

I hereby certify that the foregoing Minutes are a true and correct copy of the Minutes of the Work Study Session of the City Council of Scottsdale, Arizona held on the 22<sup>nd</sup> day of October 2019.

I further certify that the meeting was duly called and held, and that a quorum was present.

**DATED** this 12<sup>th</sup> day of November 2019.

  
\_\_\_\_\_  
Carolyn Jagger, City Clerk

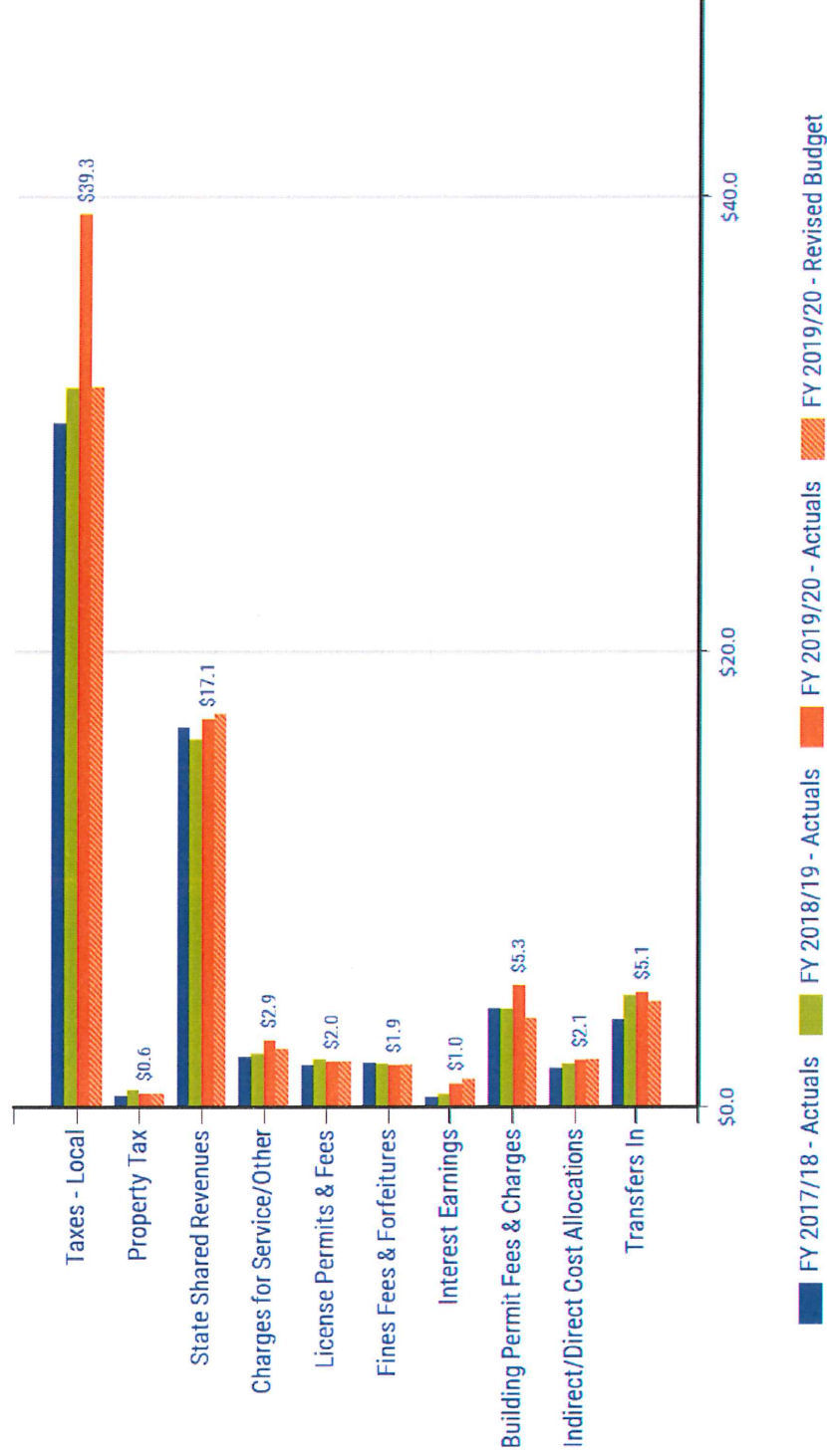
Item 1

# **Monthly Financial Update September 30, 2019**

October 22, 2019

# General Fund Operating Sources September 2019: Fiscal Year to Date

(in millions; rounding differences may occur)



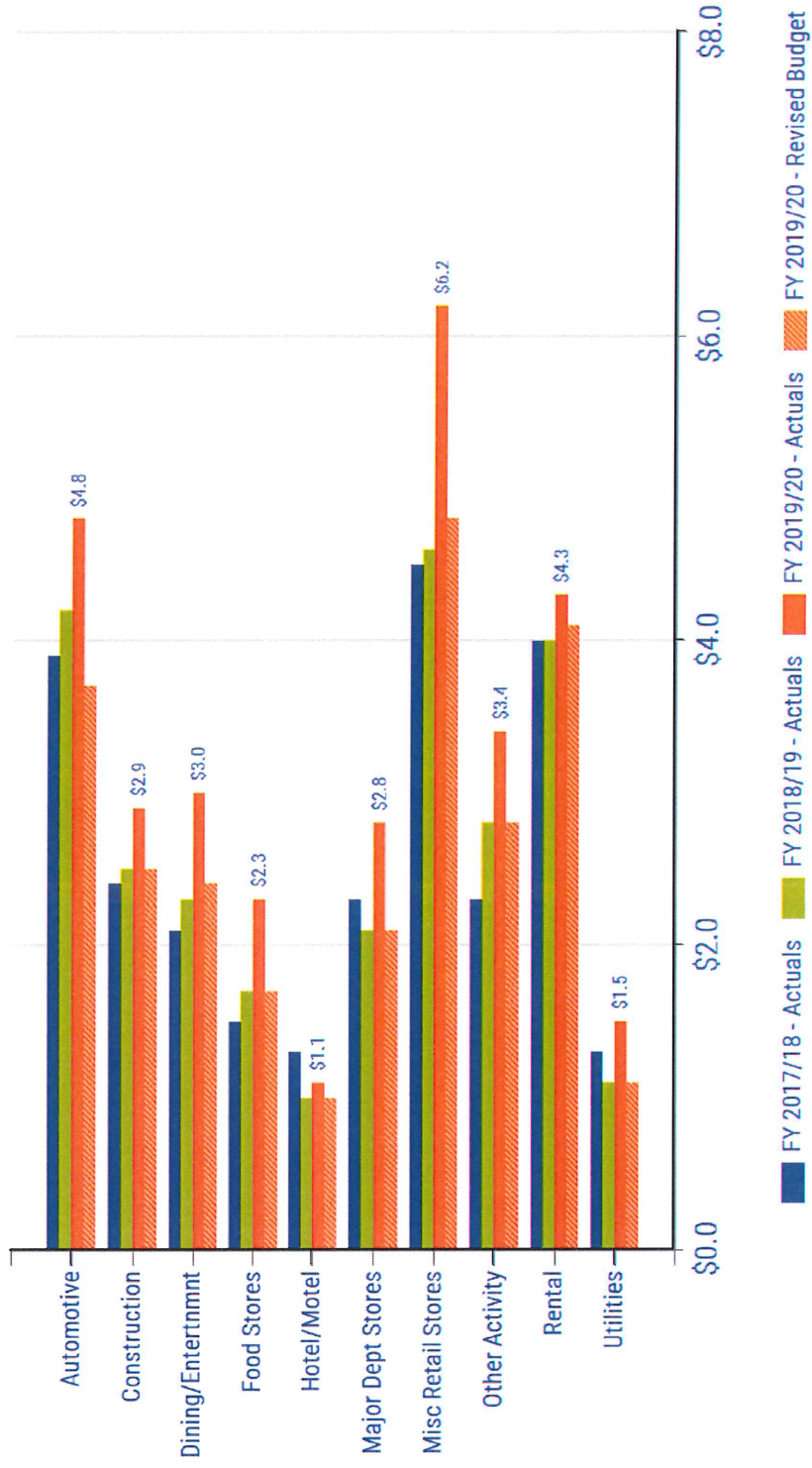
# General Fund Operating Sources September 2019: Fiscal Year to Date

(in millions; rounding differences may occur)

	FY 2017/18 Actuals	FY 2018/19 Actuals	FY 2019/20 Actuals	FY 2019/20 Revised Budget	Actual vs. Budget Favorable / (Unfavorable) Amount	Percent
Taxes - Local	\$30.1	\$31.6	\$39.3	\$31.6	\$7.6	24%
Property Tax	0.5	0.8	0.6	0.6	-	-
State Shared Revenues	16.7	16.2	17.1	17.3	(0.2)	(1%)
Charges for Service/Other	2.2	2.3	2.9	2.6	0.4	14%
License Permits & Fees	1.9	2.1	2.0	2.0	-	-
Fines Fees & Forfeitures	2.0	1.9	1.9	1.9	-	-
Interest Earnings	0.5	0.6	1.0	1.2	(0.2)	(16%)
Building Permit Fees & Charges	4.4	4.3	5.3	3.9	1.5	37%
Indirect/Direct Cost Allocations	1.7	1.9	2.1	2.1	-	-
Transfers In	3.9	4.9	5.1	4.7	0.4	9%
<b>Total Sources</b>	<b>\$63.7</b>	<b>\$66.6</b>	<b>\$77.3</b>	<b>\$68.0</b>	<b>\$9.3</b>	<b>14%</b>

# General Fund Operating Sources: Sales Tax September 2019: Fiscal Year to Date

(in millions; rounding differences may occur)



# General Fund Operating Sources: Sales Tax September 2019: Fiscal Year to Date

(in millions; rounding differences may occur)

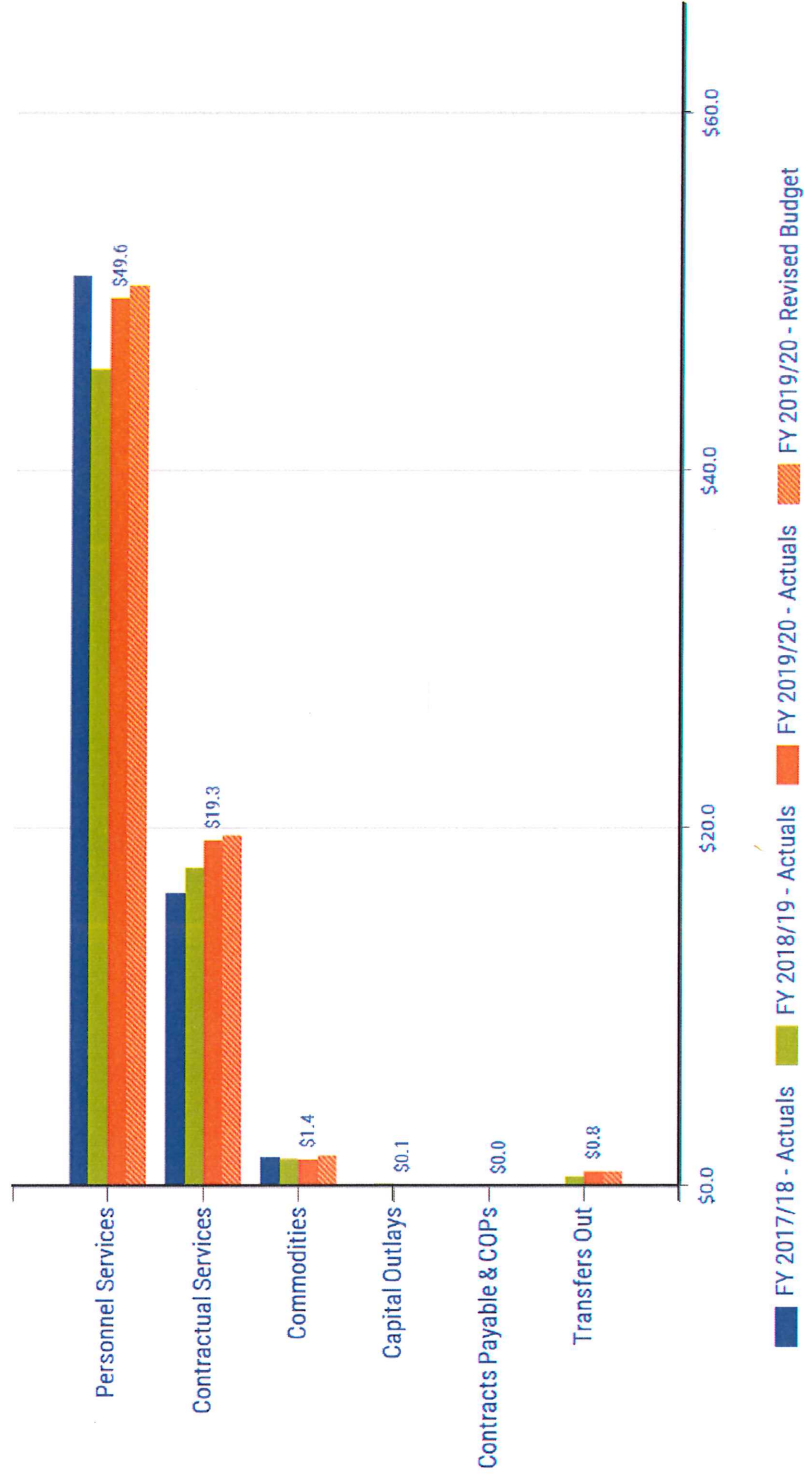
	FY 2017/18 Actuals	FY 2018/19 Actuals	FY 2019/20 Actuals	FY 2019/20 Revised Budget	Actual vs. Budget Favorable / (Unfavorable) Amount	Percent
Automotive	\$3.9	\$4.2	\$4.8	\$3.7	\$1.1	30%
Construction	2.4	2.5	2.9	2.5	0.4	15%
Dining/Entertnmt	2.1	2.3	3.0	2.4	0.6	24%
Food Stores*	1.5	1.7	2.3	1.7	0.6	32%
Hotel/Motel	1.3	1.0	1.1	1.0	0.1	10%
Major Dept Stores	2.3	2.1	2.8	2.1	0.8	36%
Misc Retail Stores	4.5	4.6	6.2	4.8	1.4	28%
Other Activity	2.3	2.8	3.4	2.8	0.7	24%
Rental	4.0	4.0	4.3	4.1	0.2	5%
Utilities	1.3	1.1	1.5	1.1	0.4	37%
<b>Sales Tax Total</b>	<b>\$25.5</b>	<b>\$26.2</b>	<b>\$32.3</b>	<b>\$26.2</b>	<b>\$6.1</b>	<b>23%</b>

\*YTD CIP Transfer = \$1.5 Million



# General Fund Operating Uses by Category September 2019: Fiscal Year to Date

(in millions; rounding differences may occur)



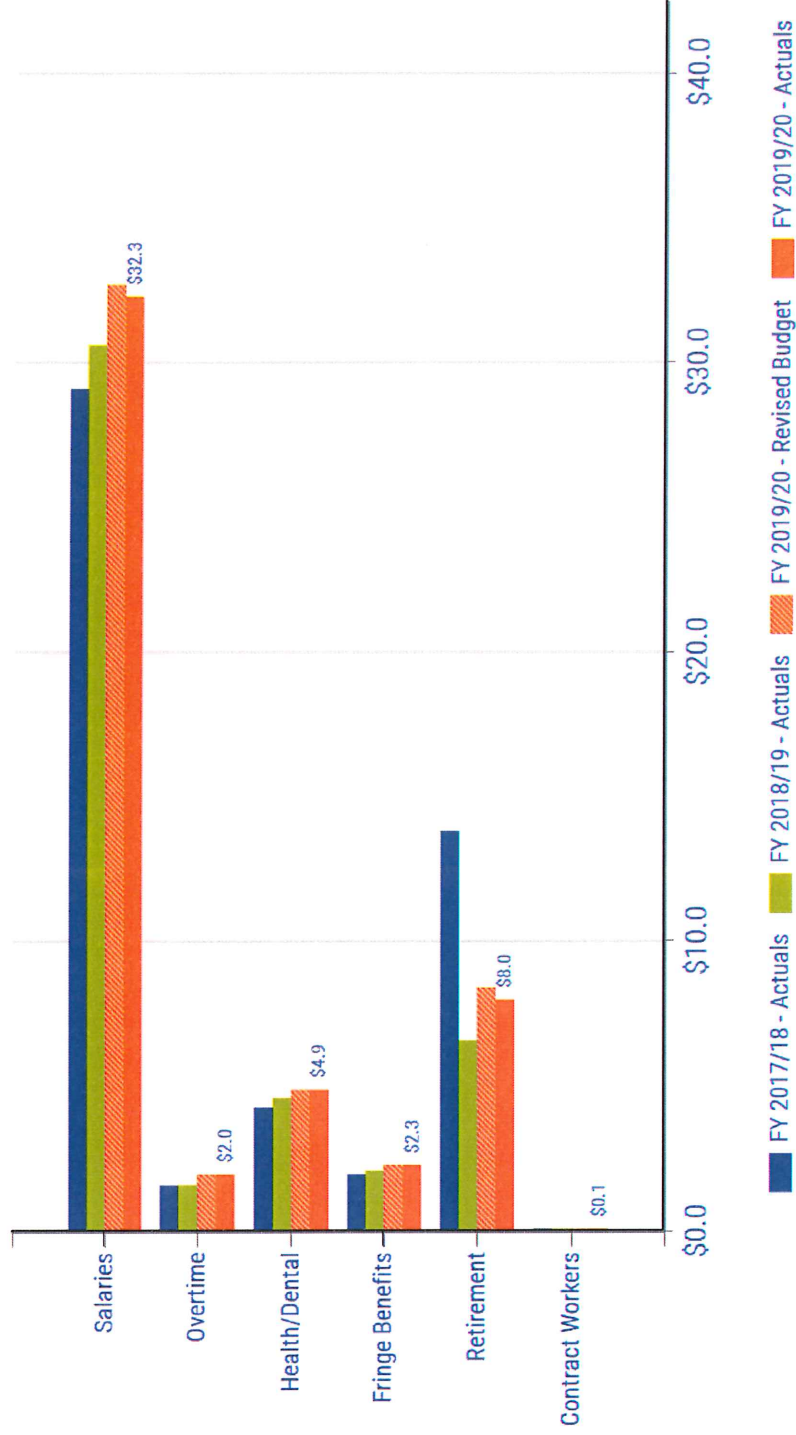
# General Fund Operating Uses by Category September 2019: Fiscal Year to Date

(in millions; rounding differences may occur)

	FY 2017/18 Actuals	FY 2018/19 Actuals	FY 2019/20 Actuals	FY 2019/20 Revised Budget	Actual vs. Budget Favorable / (Unfavorable) Amount	Percent
Personnel Services*	\$50.9	\$45.7	\$49.6	\$50.3	\$0.7	1%
Contractual Services	16.4	17.8	19.3	19.6	0.2	1%
Commodities	1.6	1.5	1.4	1.7	0.3	15%
Capital Outlays	-	0.1	0.1	0.1	-	-
Contracts Payable & COPs	-	-	-	-	-	-
Transfers Out	-	0.5	0.8	0.8	-	-
<b>Total Uses</b>	<b>\$68.9</b>	<b>\$65.6</b>	<b>\$71.3</b>	<b>\$72.5</b>	<b>\$1.2</b>	<b>2%</b>
*Pay Periods thru September:	6	6	6	6		

# General Fund Operating Uses: Personnel Services September 2019: Fiscal Year to Date

(in millions; rounding differences may occur)



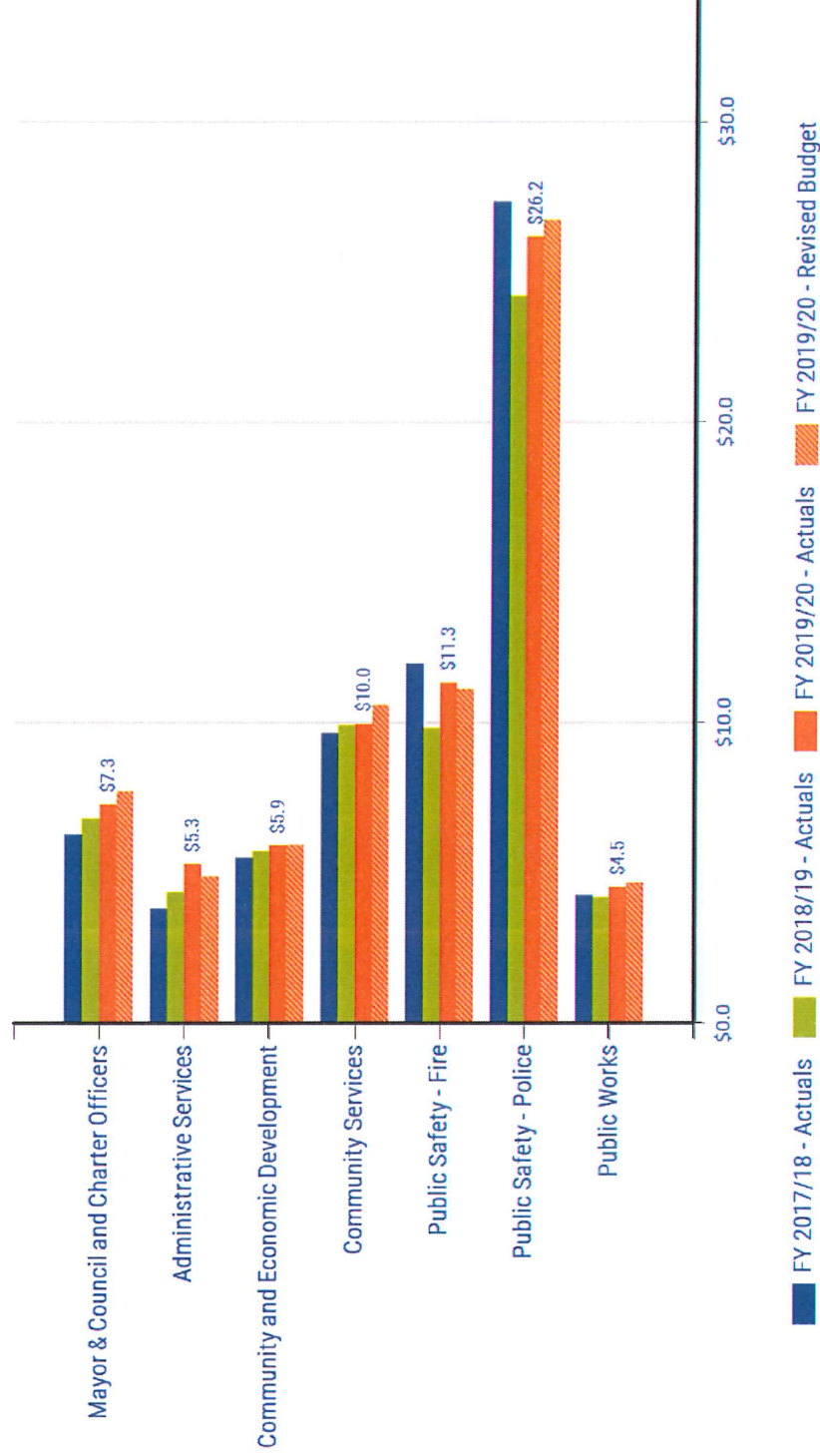
# General Fund Operating Uses: Personnel Services September 2019: Fiscal Year to Date

(in millions; rounding differences may occur)

	FY 2017/18 Actuals	FY 2018/19 Actuals	FY 2019/20 Actuals	FY 2019/20 Revised Budget	Actual vs. Budget Favorable / (Unfavorable) Amount	Percent
Salaries*	\$29.1	\$30.6	\$32.3	\$32.7	\$0.4	1%
Overtime	\$1.6	\$1.6	\$2.0	\$2.0	\$ -	-
Health/Dental	\$4.3	\$4.6	\$4.9	\$4.9	\$ -	-
Fringe Benefits	\$2.0	\$2.1	\$2.3	\$2.3	(\$0.1)	(2%)
Retirement	\$13.8	\$6.6	\$8.0	\$8.4	\$0.4	5%
Contract Workers	\$0.1	\$0.1	\$0.1	\$0.1	\$ -	-
<b>Personnel Services Total</b>	<b>\$50.9</b>	<b>\$45.7</b>	<b>\$49.6</b>	<b>\$50.3</b>	<b>\$0.7</b>	<b>1%</b>
*Pay Periods thru September:	6	6	6			

# General Fund Operating Division Expenditures September 2019: Fiscal Year to Date

(in millions; rounding differences may occur)



# General Fund Operating Division Expenditures September 2019: Fiscal Year to Date

(in millions: rounding differences may occur)

	FY 2017/18 Actuals	FY 2018/19 Actuals	FY 2019/20 Actuals	FY 2019/20 Revised Budget	Actual vs. Budget Favorable / (Unfavorable) Amount	Percent
Mayor & Council and Charter Officers	\$6.3	\$6.8	\$7.3	\$7.7	\$0.4	6%
Administrative Services	3.8	4.4	5.3	4.9	(0.4)	(8%)
Community and Economic Development	5.5	5.7	5.9	5.9	-	-
Community Services	9.7	9.9	10.0	10.6	0.6	6%
Public Safety - Fire	12.0	9.8	11.3	11.1	(0.2)	(2%)
Public Safety - Police	27.4	24.2	26.2	26.7	0.6	2%
Public Works	4.3	4.2	4.5	4.7	0.1	3%
<b>Total</b>	<b>\$68.9</b>	<b>\$65.0</b>	<b>\$70.5</b>	<b>\$71.6</b>	<b>\$1.2</b>	<b>2%</b>

# General Fund Results: Summary September 2019: Fiscal Year to Date

(in millions: rounding differences may occur)

	FY 17/18 Actual	FY 18/19 Actual	FY 19/20 Actual	FY 19/20 Budget	Actual vs. Budget Fav/(Unf)	%
<b>Sources</b>	\$63.7	\$66.6	\$77.3	\$68.0	\$9.3	14%
<b>Uses</b>	\$68.9	\$65.6	\$71.3	\$72.5	\$1.2	2%
<b>Change in Fund Balance</b>	(\$5.2)	\$1.0	\$6.0	(\$4.5)	\$10.5	

# **FY 2019/20 CIP Quarterly Update**

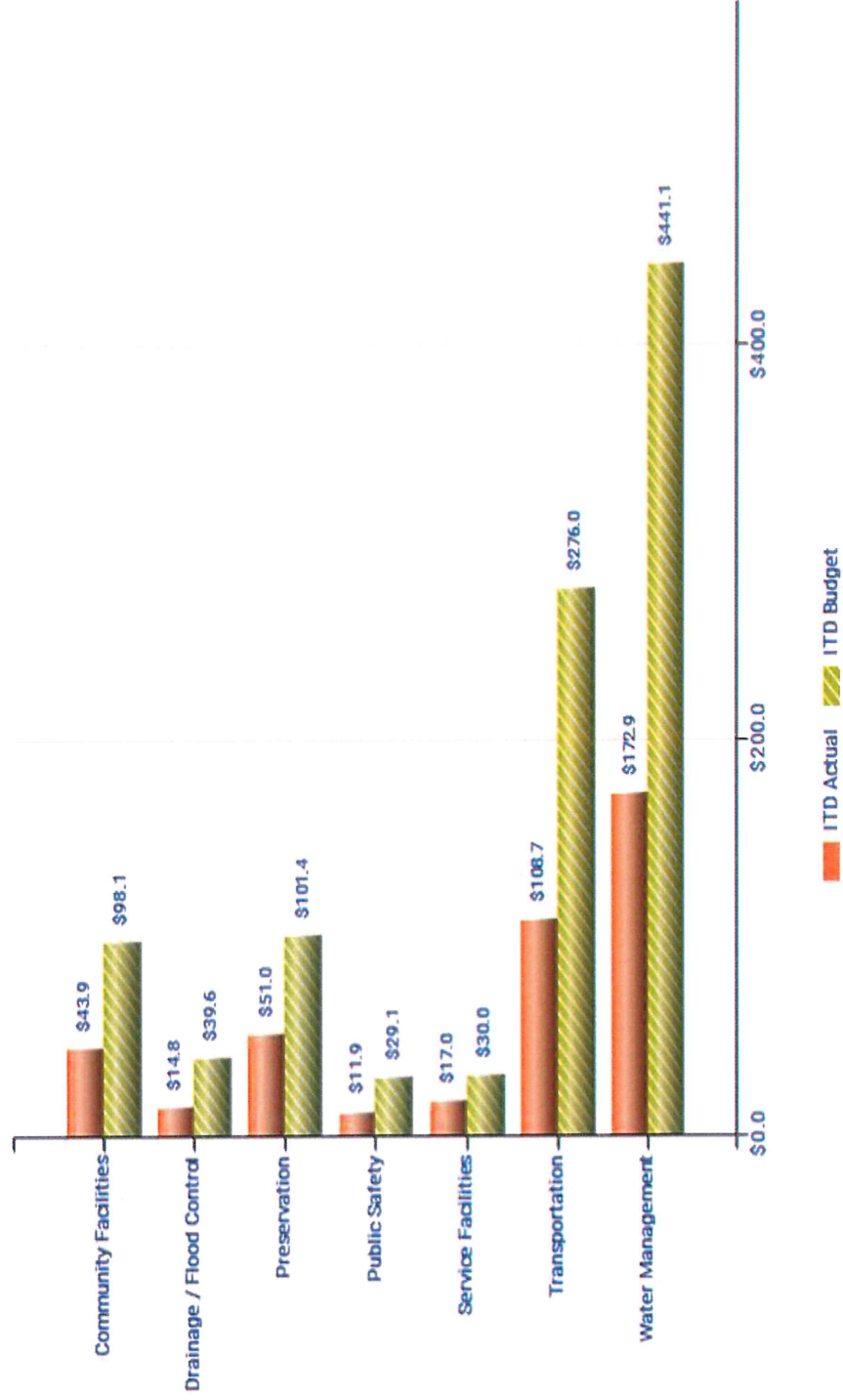
## **Quarter 1**

**October 22, 2019**



# CIP Expenditures by Program Quarter 1

(in millions: rounding differences may occur)



# CIP Expenditures by Program Quarter 1

(in millions: rounding differences may occur)

Program	FY 2019/20 Quarter 1 Actuals	FY 2019/20 ITD Budget	FY 2019/20 ITD Actual	Remaining Budget Balance
Community Facilities	\$3.9	\$98.1	\$43.9	\$54.2
Drainage / Flood Control	0.1	39.6	14.8	24.8
Preservation	0.4	101.4	51.0	50.5
Public Safety	1.3	29.1	11.9	17.2
Service Facilities	1.5	30.0	17.0	13.0
Transportation	2.5	276.0	108.7	167.3
Water Management	7.4	441.1	172.9	268.2
<b>Total</b>	<b>\$17.0</b>	<b>\$1,015.4</b>	<b>\$420.3</b>	<b>\$595.1</b>








# CIP Expenditures by Funding Source Quarter 1

(in millions: rounding differences may occur)

Funding Source	FY 2019/20	FY 2019/20	FY 2019/20	Remaining
	Quarter 1 Actuals	ITD Budget	ITD Actual	Budget Balance
<b>Arterial Life Cycle Program (ALCP)</b>	\$ -	\$100.0	\$13.5	\$86.5
Aviation	0.2	22.3	10.2	12.2
Fleet	0.3	6.5	2.0	4.5
G.O. Bonds	0.2	60.3	51.9	8.4
General Fund	2.6	60.4	24.1	36.3
<b>Intergovernmental Agreements (IGA)</b>	-	11.5	7.2	4.3
MPC Bonds	3.2	57.9	32.4	25.6
Other	0.2	20.6	4.0	16.6
Preservation	0.4	101.4	50.9	50.5
Solid Waste	-	3.4	1.7	1.7
Stormwater	-	14.1	-	14.1
Tourism Development	0.2	11.1	6.2	5.0
<b>Transit Life Cycle Program (TLCP)</b>	-	0.5	-	0.5
Transportation Grants	0.3	21.2	7.8	13.4
Transportation Sales Tax	2.1	78.1	34.9	43.2
Transportation Sales Tax 2019	-	3.4	-	3.4
<b>Water &amp; Water Reclamation</b>	7.4	442.5	173.5	269.0
<b>Total</b>	<b>\$17.0</b>	<b>\$1,015.4</b>	<b>\$420.3</b>	<b>\$595.1</b>

# CIP Significant Projects Quarter 1

(in millions: rounding differences may occur)

	Bond 2015 Projects	Pavement Replacement Fire Station 603 Fire Station 616
	Crossroads East Flood Control – Phase I	
	Drinkwater Underpass / Civic Center Mall	
	McCormick-Stillman Railroad Park Improvements – Phase I	
	Raintree Drive: Scottsdale to Hayden	
	Scottsdale Stadium Renovations – Phase I	
	Thomas Groundwater Facility	

# Bond 2015 Updates

## Question 4 – Street Pavement Rehabilitation

(in millions: rounding differences may occur)

Funding Source	5 - Year Budget	FY 2019/20 Quarter 1 Actuals	FY 2019/20 ITD Budget	FY 2019/20 ITD Actual	Remaining Budget Balance	Completion Date
Transportation:						
Pavement Replacement G.O. Bonds	\$12.5	\$ -	\$12.5	\$12.0	\$0.4	Spring 2020
Transportation Sales Tax	1.6	-	1.6	1.6	-	
<b>Total</b>	<b>\$14.1</b>	<b>\$ -</b>	<b>\$14.1</b>	<b>\$13.6</b>	<b>\$0.4</b>	

Comment: The final roadway segments will be completed in Spring 2020. Remaining segments include:

- 112<sup>th</sup> Street from Shea to Mountain View
- Mountain View/70<sup>th</sup> Street from Shea boulevard to Scottsdale Road

# Bond 2015 Updates

## Question 5 – Public Safety Fire

(in millions: rounding differences may occur)

Funding Source	5 - Year Budget	FY 2019/20 Quarter 1 Actuals	FY 2019/20 ITD Budget	FY 2019/20 ITD Actual	Remaining Budget Balance	Completion Date
G.O. Bonds	\$7.9	\$0.2	\$7.9	\$3.3	\$4.6	Spring 2020
General Fund	0.5	-	0.5	-	0.5	
<b>Total</b>	<b>\$8.4</b>	<b>\$0.2</b>	<b>\$8.4</b>	<b>\$3.3</b>	<b>\$5.0</b>	

Comment: Undergrounds complete, footings being formed and poured. Contract completion date is June 7, 2020

Funding Source	5 - Year Budget	FY 2019/20 Quarter 1 Actuals	FY 2019/20 ITD Budget	FY 2019/20 ITD Actual	Remaining Budget Balance	Completion Date
G.O. Bonds	\$3.7	\$ -	\$3.7	\$0.4	\$3.3	Spring 2020
General Fund	1.8	-	1.8	-	1.8	
<b>Total</b>	<b>\$5.5</b>	<b>\$ -</b>	<b>\$5.5</b>	<b>\$0.4</b>	<b>\$5.1</b>	

Comment: Contract Award October 15, 2019, Notice to Proceed anticipated in late November with 365 days for construction.

# Crossroads East Flood Control Phase I

(in millions: rounding differences may occur)



# Crossroads East Flood Control Phase I

(in millions: rounding differences may occur)

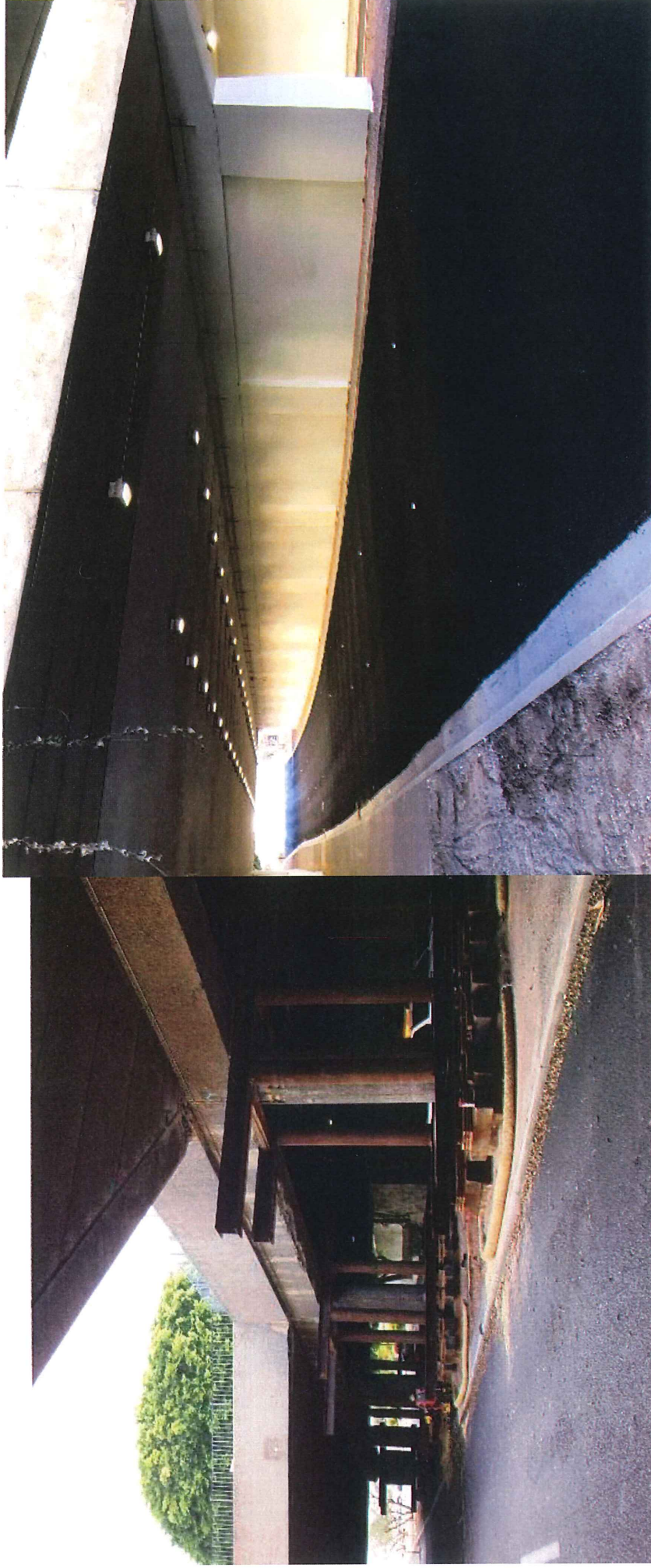
Funding Source	5 - Year Budget	FY 2019/20			FY 2019/20 ITD Budget	FY 2019/20 ITD Actual	Remaining Budget Balance	Completion Date
		Quarter 1 Actuals	ITD Budget	ITD Actual				
<b>Drainage / Flood Control:</b>								
<b>Crossroads East Flood Control Phase I</b>								
General Fund	\$1.4	\$ -	\$1.4	\$1.4	\$1.7	(\$0.3)	End of 2020	
Contributions	0.6	-	0.6	0.6	0.6	-		
AZ State Land Reimbursements	0.9	-	0.9	0.9	0.1	0.8		
MPC Bonds	14.1	-	14.1	14.1	-	14.1		
<b>Total</b>	<b>\$17.0</b>	<b>\$ -</b>	<b>\$17.0</b>	<b>\$17.0</b>	<b>\$2.3</b>	<b>\$14.7</b>		

Comment: Anticipated NTP week of October 21<sup>st</sup>, construction timeframe is 8 months.



# Drinkwater Underpass / Civic Center Mall

(in millions: rounding differences may occur)



# Drinkwater Underpass / Civic Center Mall

(in millions: rounding differences may occur)



# Drinkwater Underpass / Civic Center Mall

(in millions: rounding differences may occur)

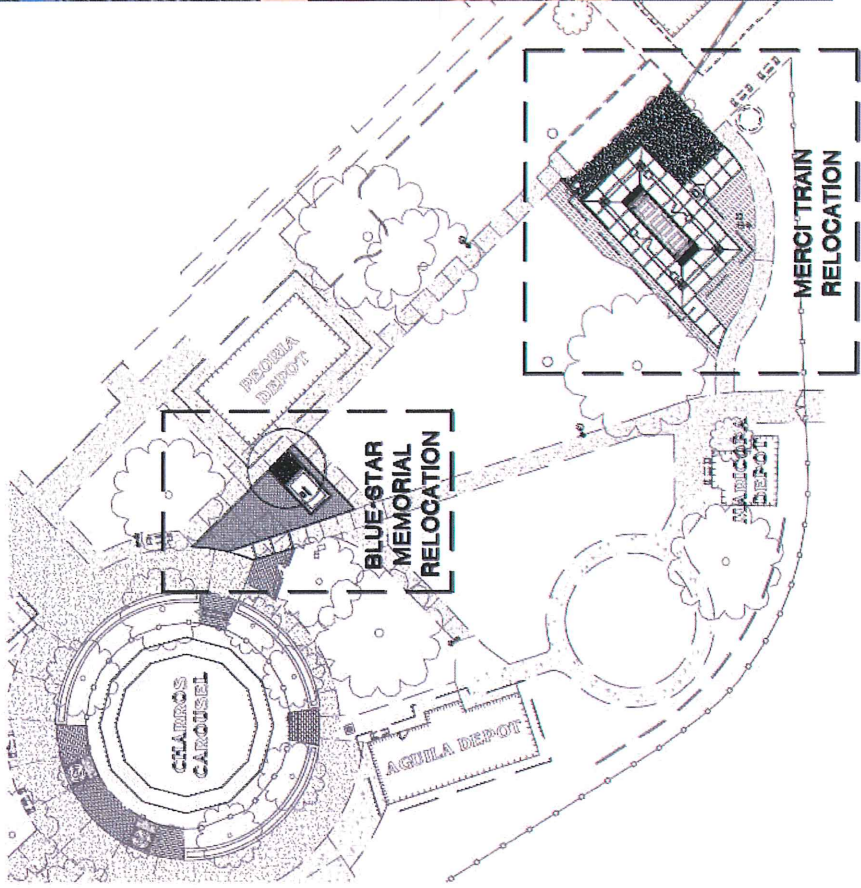
Funding Source	5 - Year Budget	FY 2019/20		FY 2019/20 ITD Budget	FY 2019/20 ITD Actual	Remaining Budget Balance		Completion Date
		Quarter 1 Actuals	ITD			Budget	Balance	
<b>Transportation:</b>								
Drinkwater Bridge Interim Structural Repairs								
Transportation Sales Tax	\$2.8	\$0.5	\$2.8	\$3.7	(\$0.9)			Fall 2019
Bond 2000 Arterial Life Cycle Program (ALCP)	0.6	-	0.6	\$0.6	-			
<b>Total</b>	<b>6.0</b>	<b>\$0.5</b>	<b>6.0</b>	<b>\$4.2</b>	<b>6.0</b>	<b>\$5.1</b>		

**Comment:**

Drinkwater is open. Reopened on Friday, October 11<sup>th</sup>. Construction on top is anticipated to be completed in early November.

# McCormick-Stillman Railroad Park Improvements – Phase I

(in millions: rounding differences may occur)



# McCormick-Stillman Railroad Park Improvements – Phase I

(in millions; rounding differences may occur)

Funding Source	5 - Year Budget	FY 2019/20		FY 2019/20		FY 2019/20		Remaining Budget Balance	Completion Date
		Quarter 1 Actuals	ITD Budget	ITD Actual	ITD Budget	ITD Actual			
McCormick-Stillman Railroad Park	\$3.2	\$ -	\$3.2	\$ -	\$ -	\$ -	\$ -	\$3.2	06/30/22
Improvements – Phase I	0.9	-	0.9	-	-	-	-	0.9	
<b>Total</b>	<b>\$4.0</b>	<b>\$ -</b>	<b>\$4.0</b>	<b>\$ -</b>	<b>\$ -</b>	<b>\$ -</b>	<b>\$ -</b>	<b>\$4.0</b>	

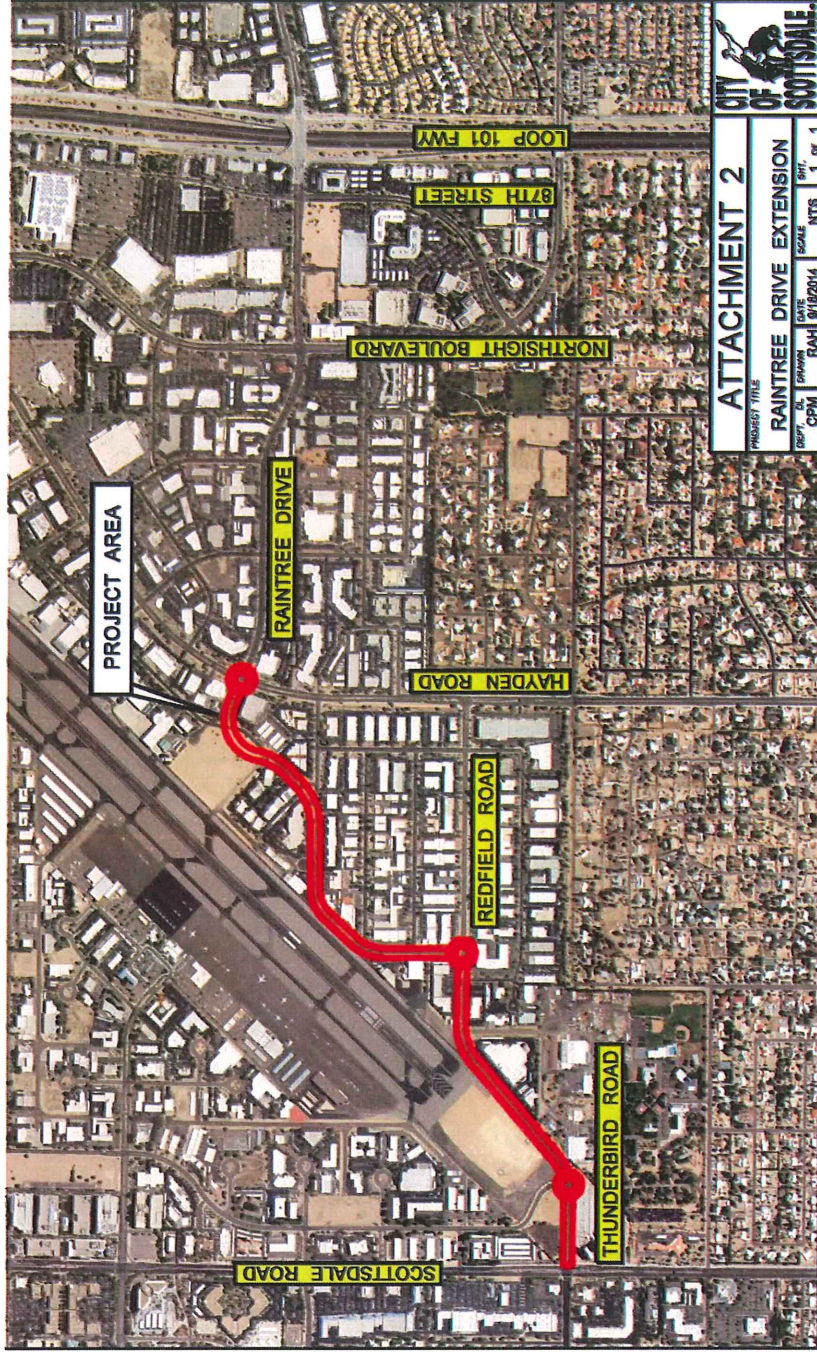
**Comments:**

The Phase I improvements include:

- 1) Relocation of the Mercy Train
- 2) Relocation of the Blue Star Memorial
- 3) Demolition of the existing bunk house and construction of a new indoor railroad/train themed play area, restrooms, conference room and storage space. The building is anticipated to also have a large shaded patio on the west side of the building.

# Raintree Drive: Scottsdale Road to Hayden Road

(in millions: rounding differences may occur)



# Raintree Drive: Scottsdale Road to Hayden Road

(in millions; rounding differences may occur)

Funding Source	5 - Year Budget	FY 2019/20			FY 2019/20 ITD Actual	Remaining	
		Quarter 1 Actuals	ITD Budget	Budget Balance		Budget Balance	Completion Date
<b>Transportation:</b>							
Raintree Drive: Scottsdale Road to Arterial Life Hayden Road							
Cycle Program (ALCP)	\$16.1	\$ -	\$16.1	\$6.2	\$9.9	End of 2020	
Bond 2000	1.0	-	1.0	1.0	-		
Transportation	6.0	-	6.0	0.9	5.0		
Sales Tax							
<b>Total</b>	<b>\$23.0</b>	<b>\$ -</b>	<b>\$23.0</b>	<b>\$8.1</b>	<b>\$14.9</b>		

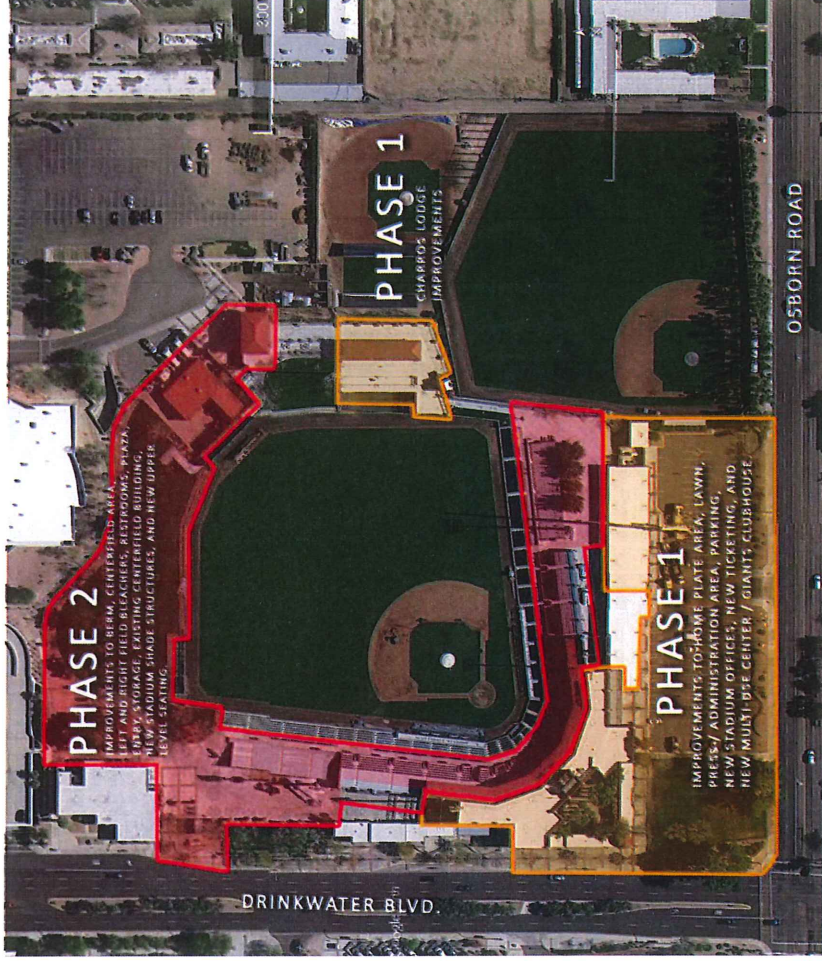
# Scottsdale Stadium Phase I

(in millions: rounding differences may occur)

## April 2019 – February

### 2020

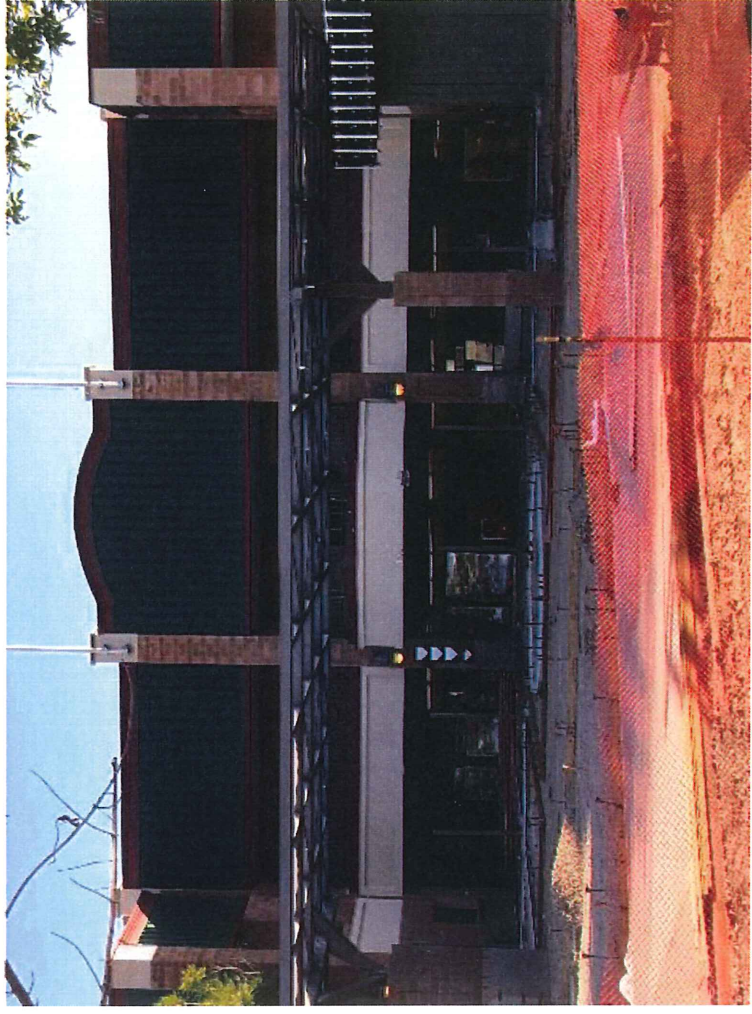
- Clubhouse
- Indoor Multi-Use Spaces
- Entry and Parking
- Press box
- Ticketing and Administration
- Charro Lodge
- Right Field Concourse





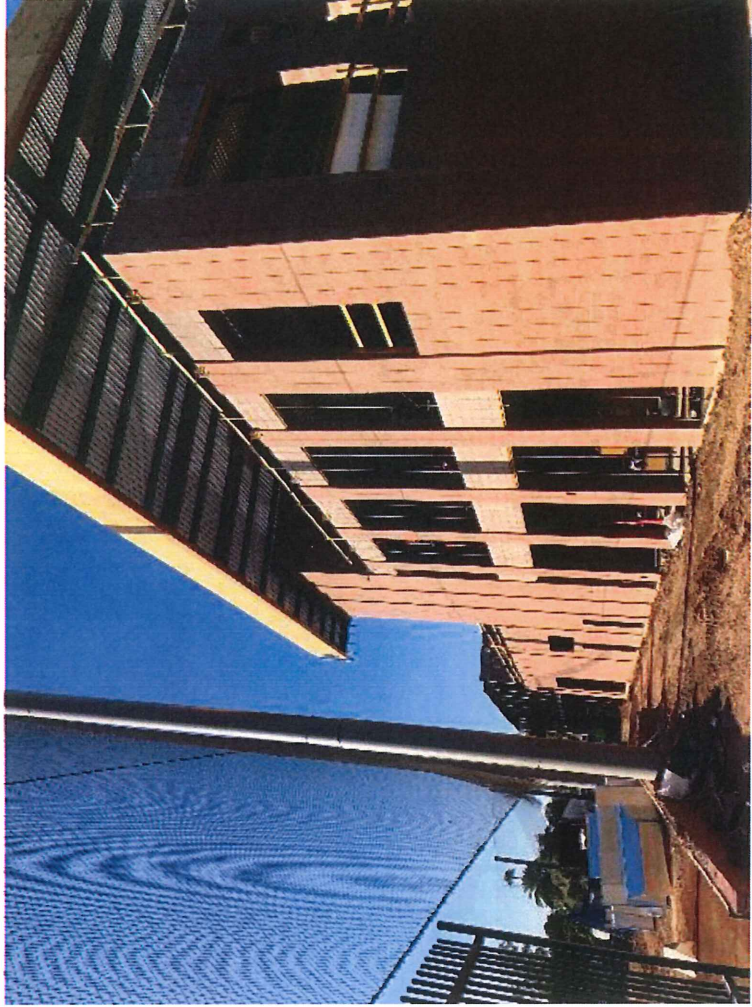
# Scottsdale Stadium Phase I

(in millions: rounding differences may occur)



# Scottsdale Stadium Phase I

(in millions: rounding differences may occur)



# Scottsdale Stadium Phase I

(in millions; rounding differences may occur)

Funding Source		5 - Year Budget	FY 2019/20 Quarter 1 Actuals	FY 2019/20 ITD Budget	FY 2019/20 ITD Actual	Remaining Budget Balance	Completion Date
<b>Community Facilities:</b>							
Scottsdale Stadium Renovations							
Tourism							
Development	\$10.0		\$0.2	\$10.0	\$5.1	\$4.9	Spring 2020
Giants							
Contribution Stadium's	\$5.0		-	\$5.0	-	5.0	
Concessionaire							
	2.5		-	2.5	-	2.5	
MPC Bonds	33.1		3.2	33.1	7.1	26.0	
<b>Total</b>	<b>\$50.6</b>		<b>\$3.4</b>	<b>\$50.6</b>	<b>\$12.1</b>	<b>\$38.5</b>	



# Thomas Groundwater Treatment Facility

(in millions: rounding differences may occur)

Funding Source	5 - Year Budget	FY 2019/20		FY 2019/20 ITD Budget	FY 2019/20 ITD Actual	Remaining	
		Quarter 1 Actuals	ITD Budget			Budget Balance	Completion Date
Water Rates	\$18.5	\$0.2	\$18.5	\$2.4	\$16.1	Spring 2021	
MPC Bonds	12.9	1.9	12.9	3.1	9.8		
<b>Total</b>	<b>\$31.4</b>	<b>\$2.1</b>	<b>\$31.4</b>	<b>\$5.5</b>	<b>\$25.9</b>		

## Water Management:

Thomas Groundwater Treatment Facility

Comment:  
Construction on-going

## Completed Projects Quarter 1

### Community Facilities

- Paiute Neighborhood Center ADA Bathroom Renovations

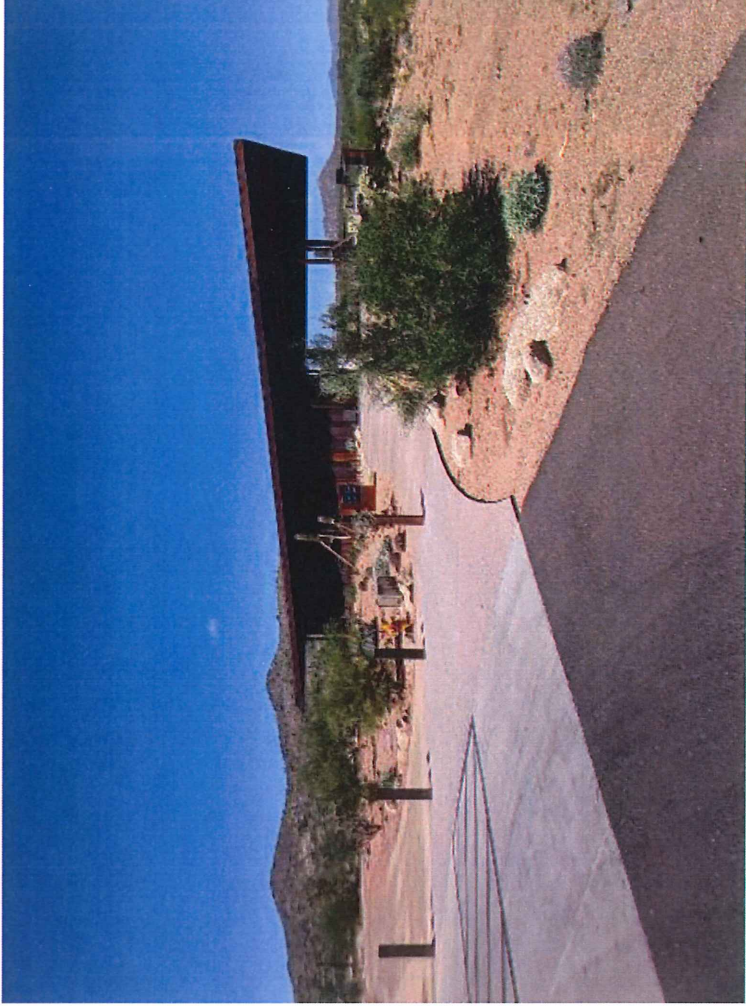
### Transportation

- Mustang Transit Passenger Facility

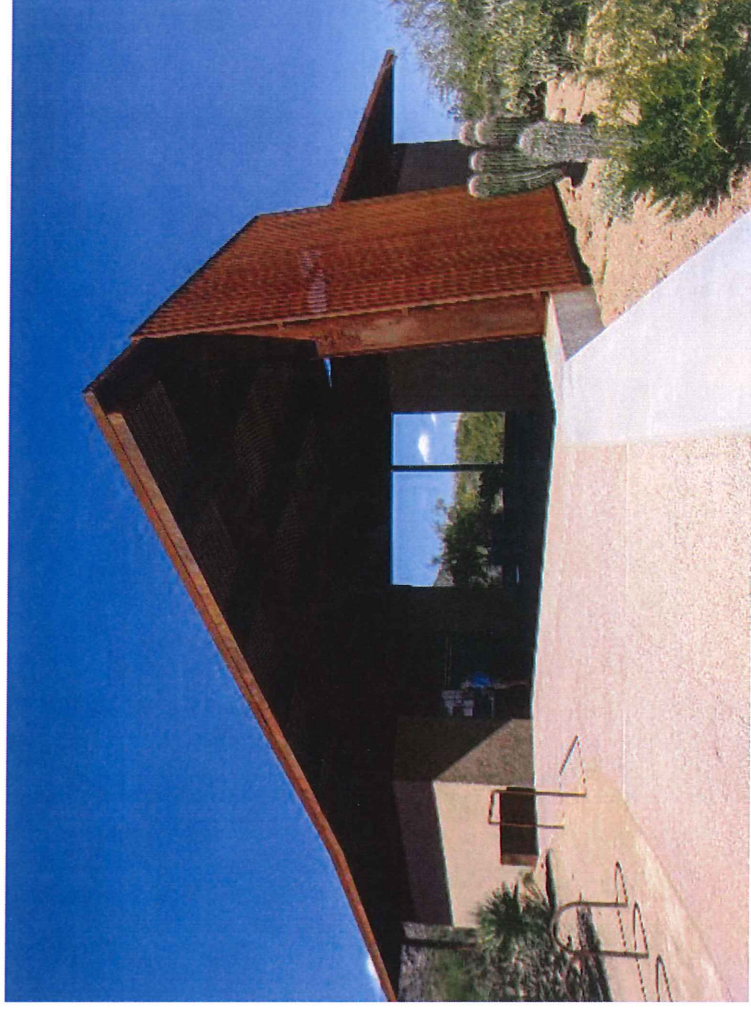
# Completed Projects Quarter 1

## Appropriation that reverted back to Fund

<b>Balance</b>	
<b>General Fund</b>	<b>\$4,775</b>
<b>Transportation 0.2% Sales Tax</b>	<b>177,052</b>
<b>Total</b>	<b>\$181,827</b>



Fraesfield Trailhead



Granite Mountain Trailhead



video link

**Item 2**

**Arterial Life Cycle Program Update**

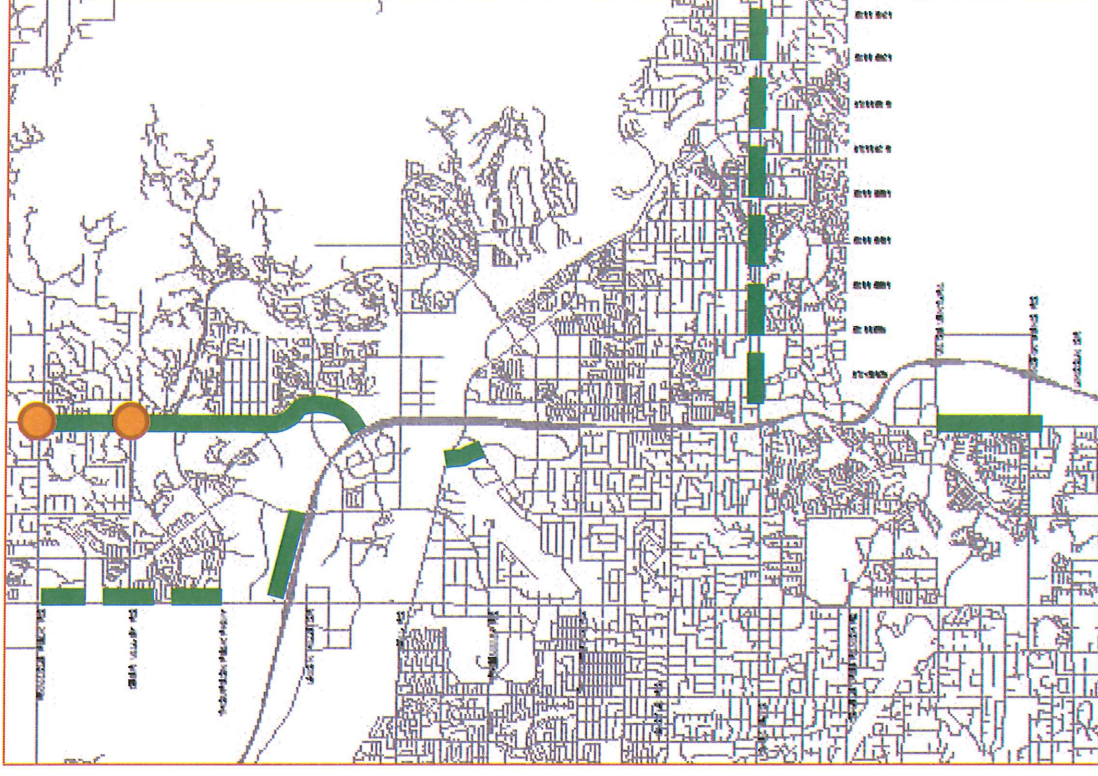
City Council Study Session  
October 22, 2019

## **Arterial Life Cycle Program (ALCP)**

- **Funded through Fiscal Year 2025-26 (0.5% sales tax)**
- **Maricopa Association of Governments (MAG) oversees ALCP**
- **Cities manage projects and get reimbursed**
- **Projects require a minimum 30% local match**
- **Focus on adding roadway capacity through additional lanes and/or intersection widening**
- **Projects can include bike lanes, sidewalks and paths/trails that provide pedestrian access**

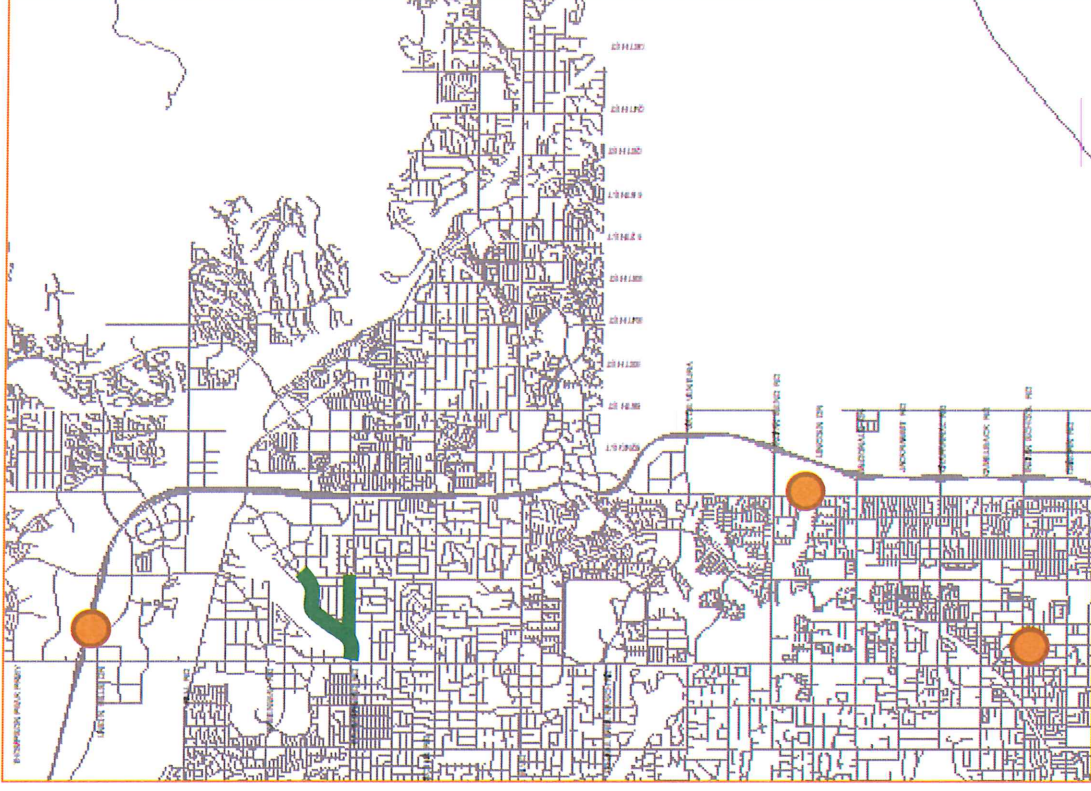
## **ALCP Completed Projects**

- Pima Road
  - Loop 101 to Pinnacle Peak
  - Via de Ventura to Krail Street
- Scottsdale Road
  - Thompson Peak to Pinnacle Peak (Phase 1)
- North Loop 101 Frontage Road
  - Hayden to Scottsdale
- Northsight Boulevard
  - Hayden to Frank Lloyd Wright
- Shea Boulevard (Phase 1)
  - Seven intersections
    - 90<sup>th</sup> to 134<sup>th</sup>
  - ITS (Loop 101 to 96<sup>th</sup>)



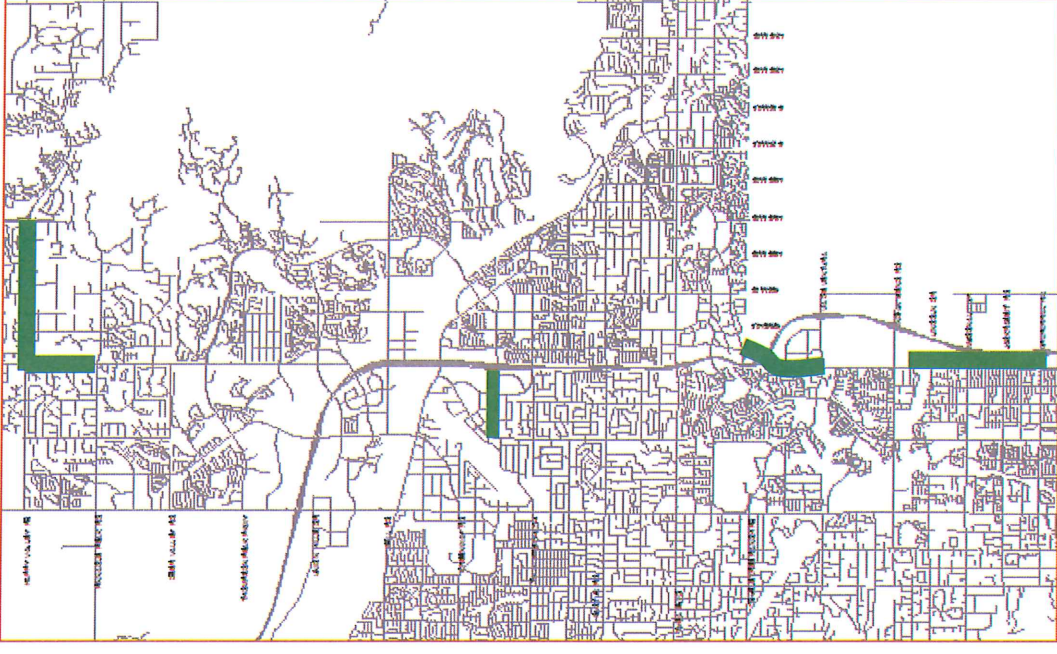
## **ALCP Projects in Construction or Design Complete**

- **Miller Road Underpass**
  - at Loop 101
- **Drinkwater Boulevard Bridge**
  - at Civic Center
- **Pima Road at Arizona Canal**
- **Raintree Drive**
  - Scottsdale to Hayden
- **Redfield Road**
  - 76<sup>th</sup> to Hayden



## **ALCP Projects in Design**

- Happy Valley Road
  - Pima to Alma School
- Pima Road
  - Pinnacle Peak to Happy Valley
  - *Via Linda to Via de Ventura (FHWA Grant)*
  - *Krail to Chaparral (FHWA Grant)*
- Raintree Drive
  - Hayden to Loop 101



## Question 1 Impact on FY 20 ALCP Update

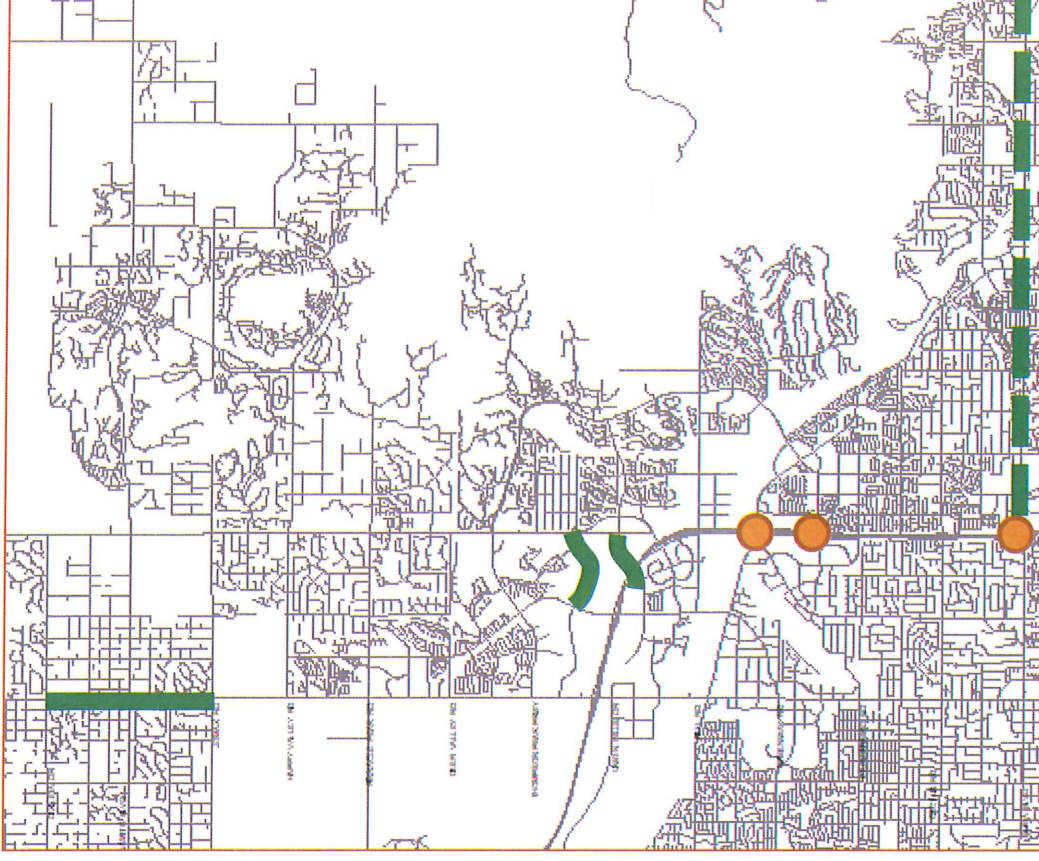
- **Additional 0.1% transportation sales tax authorized for 10 years allows full use of all MAG funds and accelerates schedules**
- **MAG funds increased \$73.6M through FY 23 (from 2018)**

ALCP Version	FY 19	FY 20	FY 21	FY 22	FY 23	FY 24	FY 25	FY 26	Total
2018 Final	\$42.76	\$21.89	\$5.18	\$0.00	\$0.00	\$40.31	\$105.16	\$24.71	\$240.01
2019 Draft	\$39.38	\$27.67	\$25.58	\$26.55	\$24.30	\$19.46	\$56.06	\$21.01	\$240.01
Change	(\$3.39)	\$5.78	\$20.40	\$26.55	\$24.30	(\$20.85)	(\$49.10)	(\$3.70)	(\$0.00)

\* All figures in Millions

## **Projects to be Designed in FY 20 with funding from Question 1**

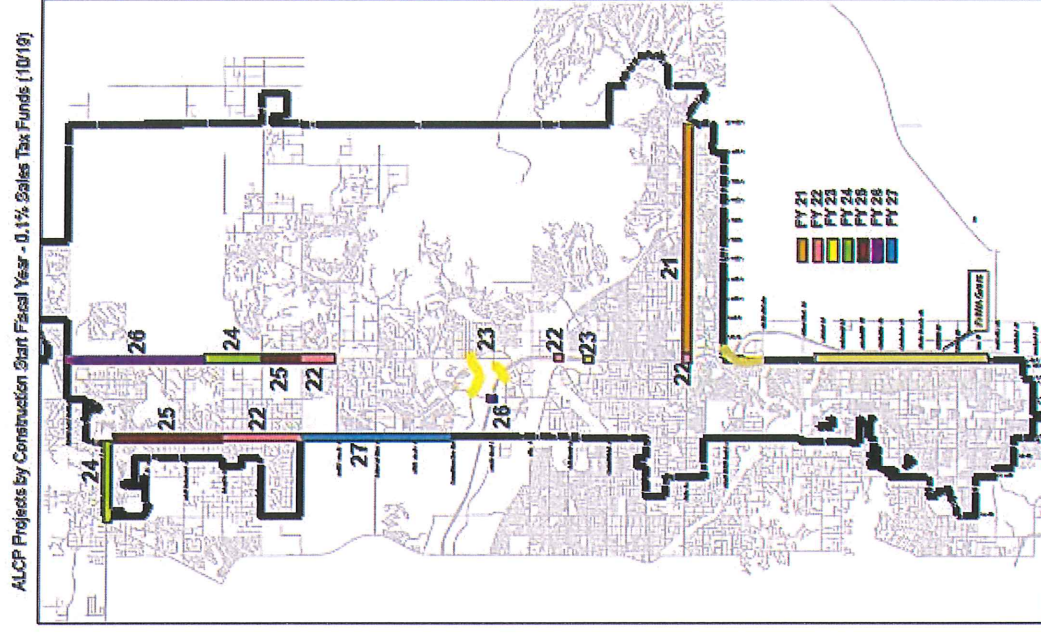
- Final design
  - Scottsdale Road
    - Jomax to Dixileta
  - Shea Boulevard Intersections (Phase II)
    - 90th to 136th
- Concept design
  - Loop 101 at Frank Lloyd Wright, Raintree and Shea (w/ADOT)
  - Legacy/Hualapai Connector
  - Mayo/Loop 101 Crossing





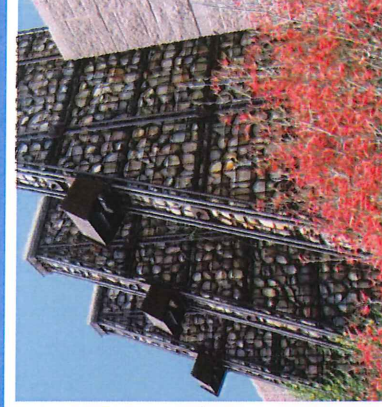
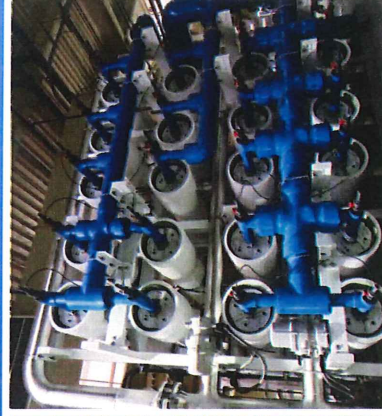
## Projects to be Constructed with Funding from Question 1

- Pima Road
  - Happy Valley to Stagecoach
  - *Krail to McDowell (FHWA grant)*
- Scottsdale Road
  - Thompson Peak to Carefree Hwy
- Carefree Hwy
  - 56<sup>th</sup> to Scottsdale
- Shea Boulevard (Phase II)
  - Loop 101 to 136th
- Hualapai & Mayo Connections
- Various interchanges/intersections



Item 3

# Residential Sewer Line Extensions and Septic Systems



# Agenda

1. Basics – What, Why, Where
2. Water Quality Concerns
3. Program Requirements
4. Costs
5. Options/Guidance to Staff

What is a sewer line extension?

A program established to allow a homeowner/developer of a single-family residence to extend a sewer line to their property.

# Why do we have a sewer line extension program?

Scottsdale General Plan, Public Services and Facilities Element, paragraph 12 (Water Resources) has the following bullets:

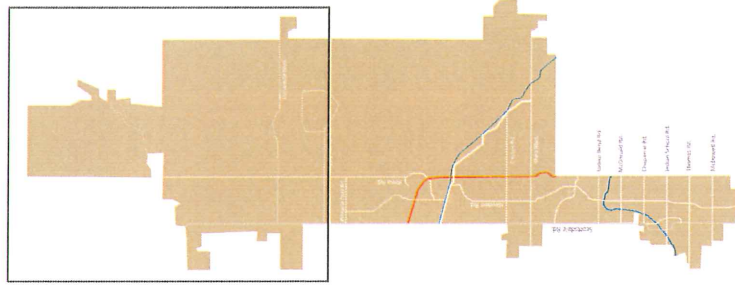
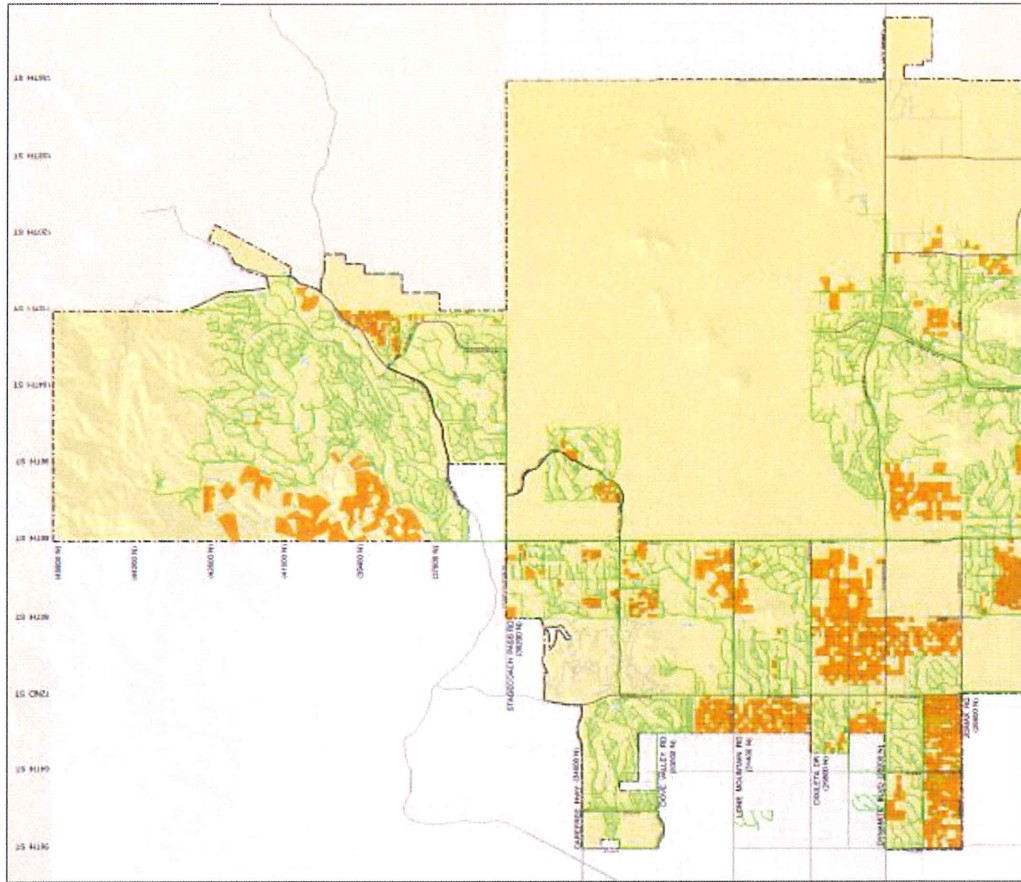
- Recognize the value of water and wastewater as resources to be managed in order to contribute to a sustainable community.
- Make sure that new service delivery costs are borne by those desiring the service without costing or adversely impacting existing customers.

## Why do we have a sewer line extension program?

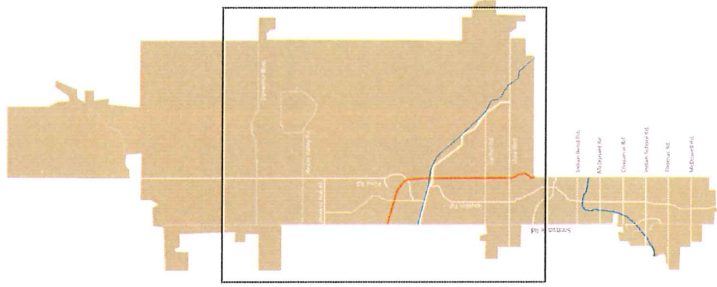
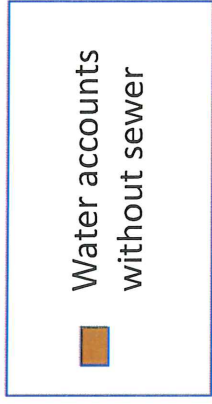
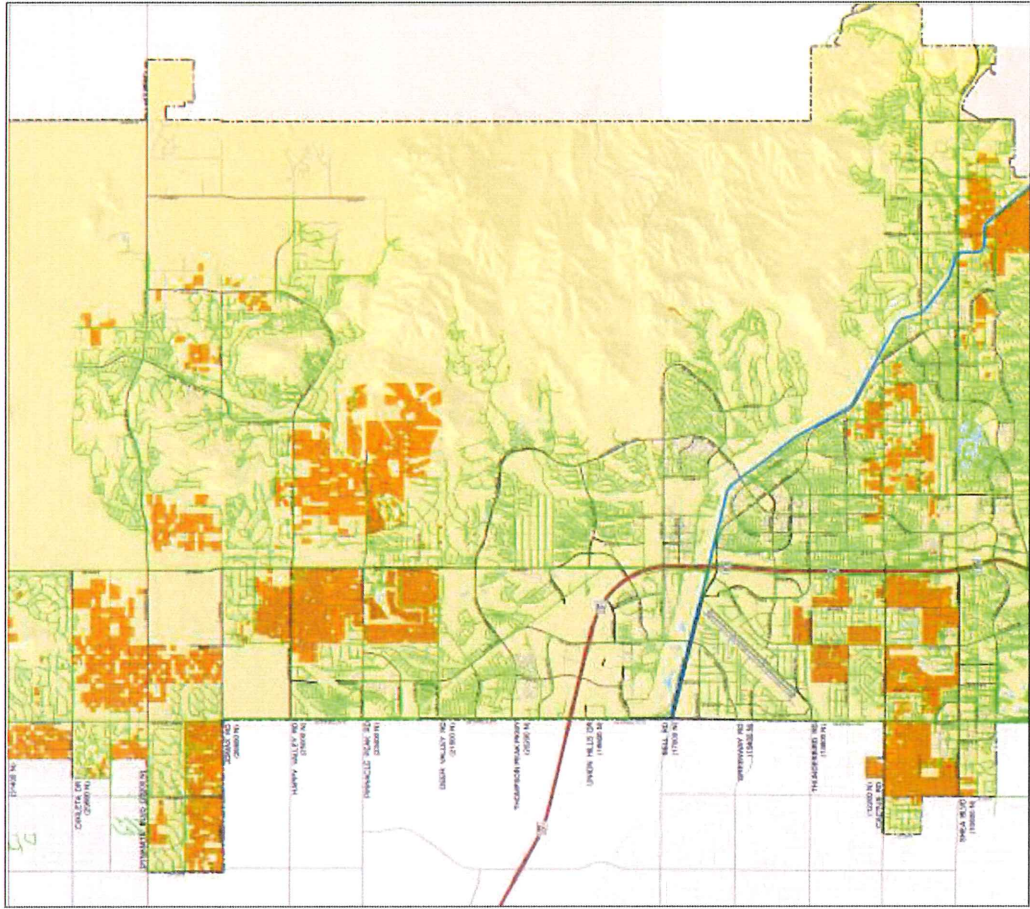
(continued)

- Use water, water resources, and sewer development fees to ensure that new growth pays for itself when extending the water and wastewater systems to serve new growth.
- Encourage the use of alternative sewer systems instead of private septic systems.

# Septic Systems in Scottsdale North

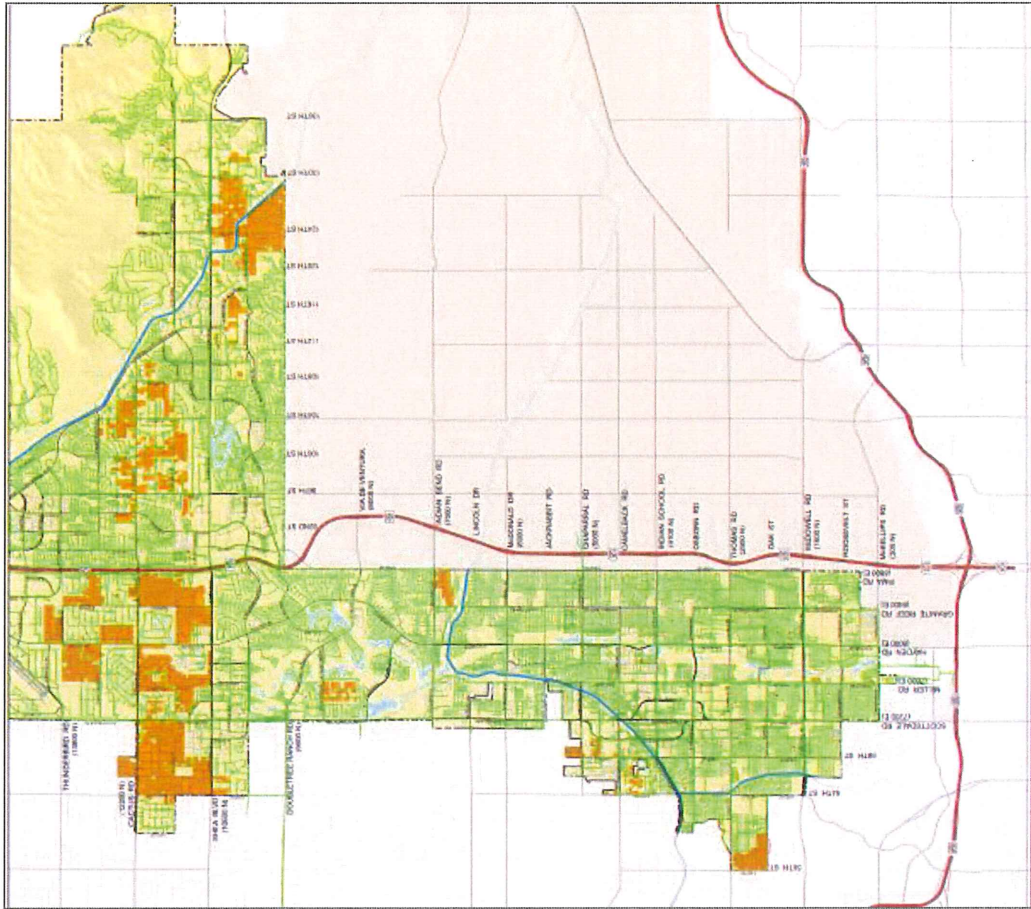


# Septic Systems in Scottsdale Central

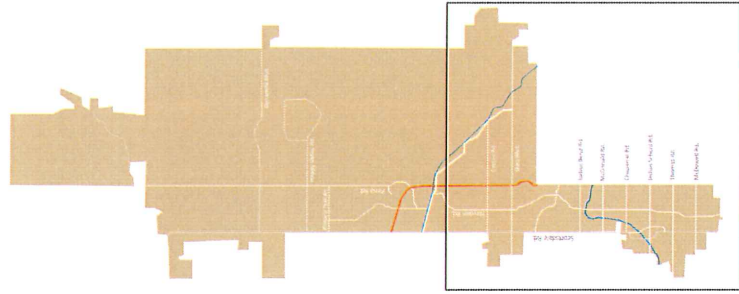




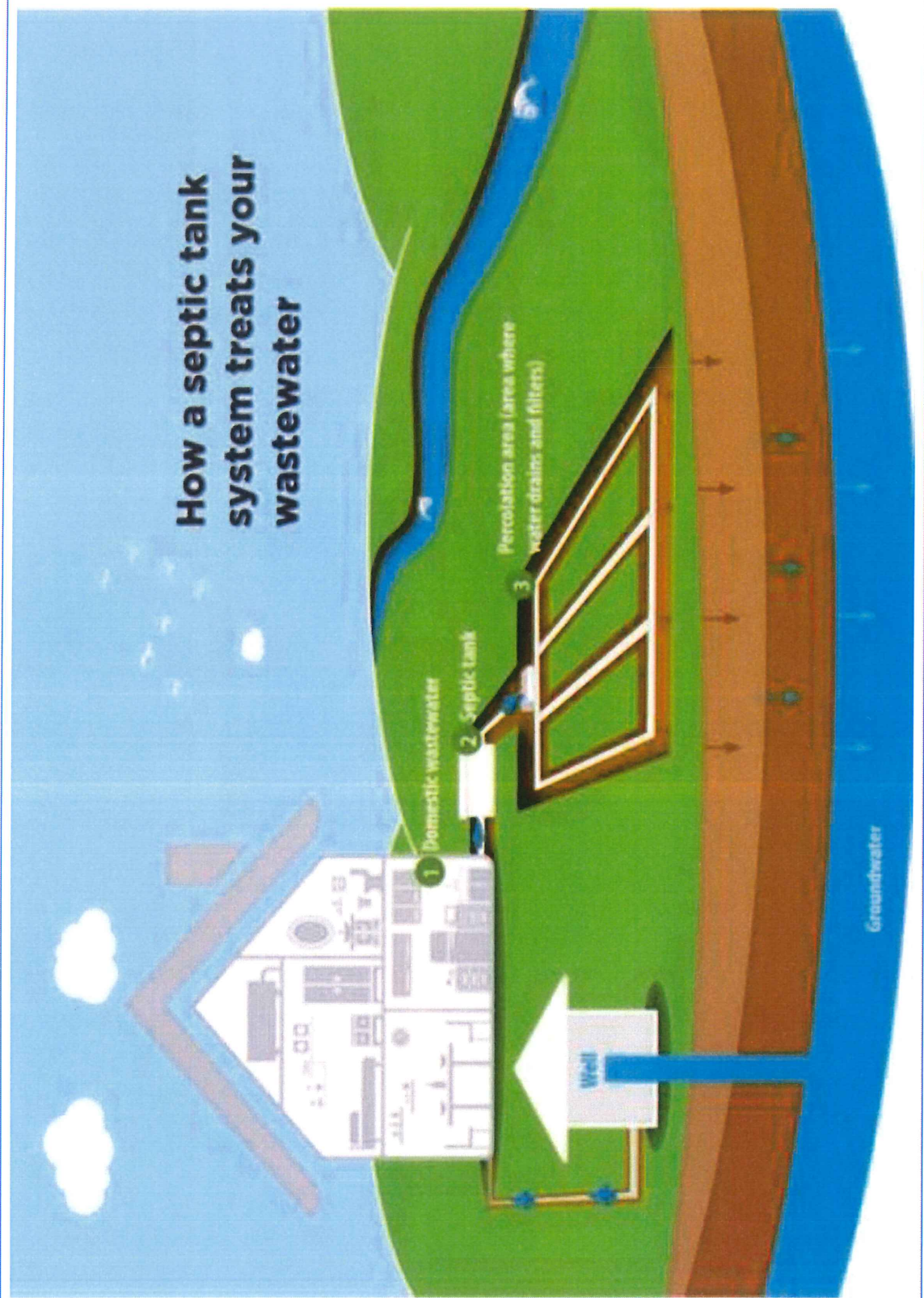
# Septic Systems in Scottsdale South



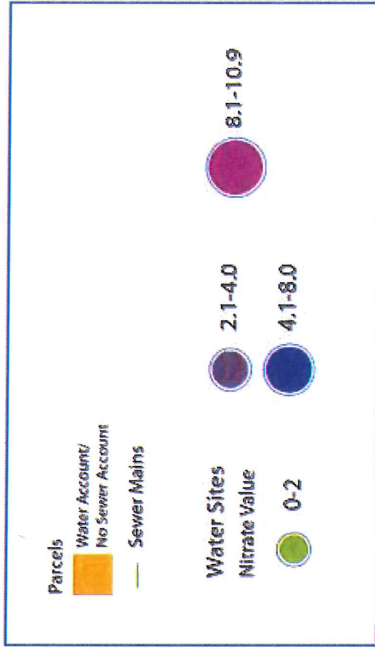
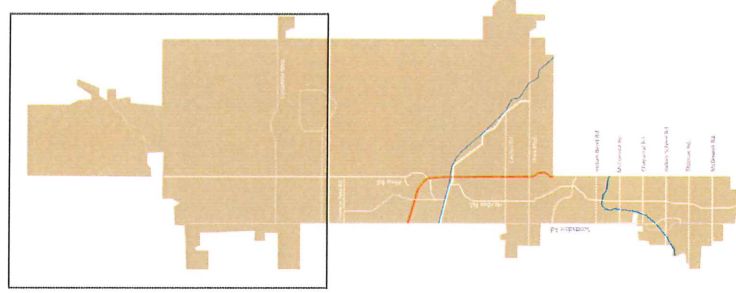
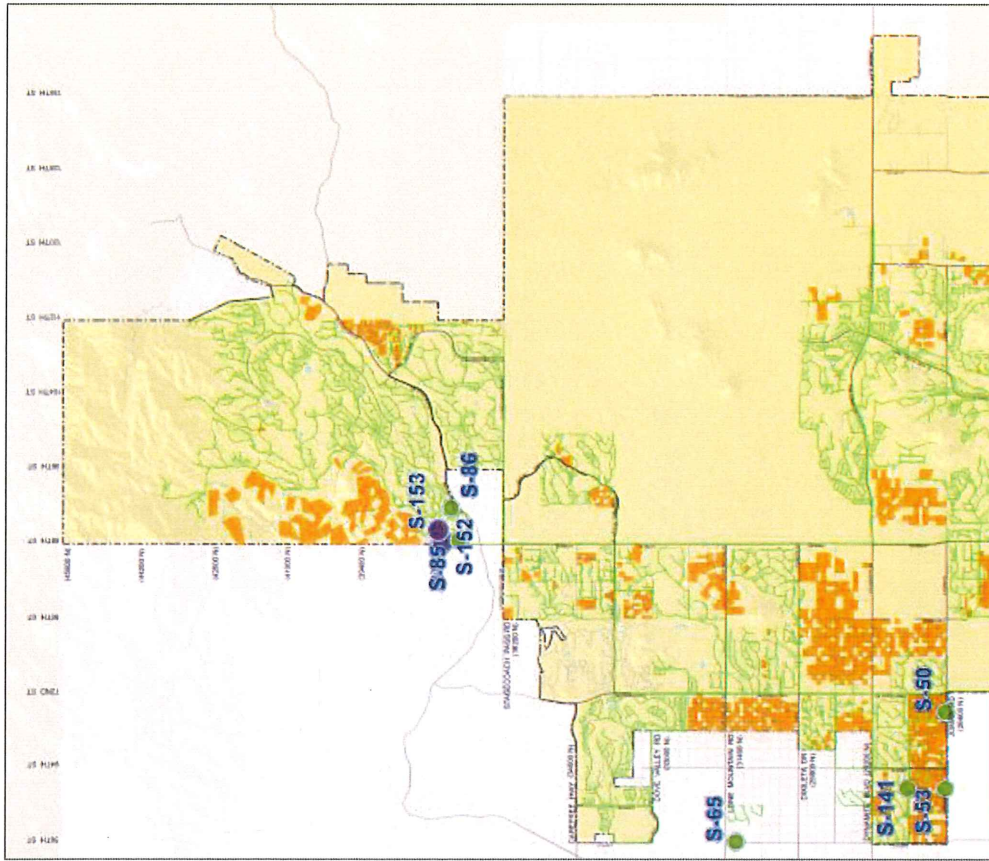
Water accounts  
without sewer



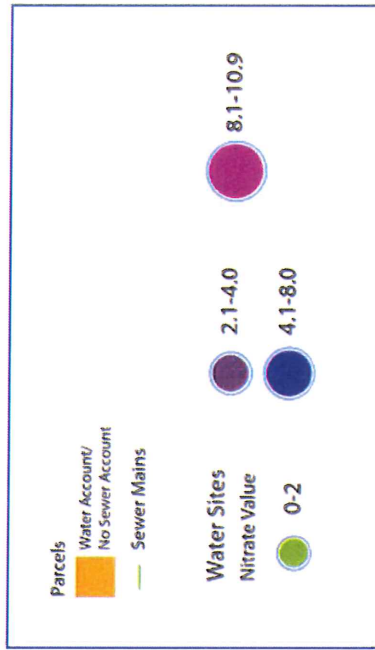
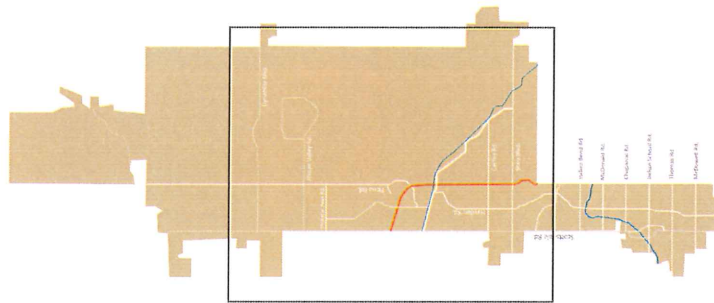
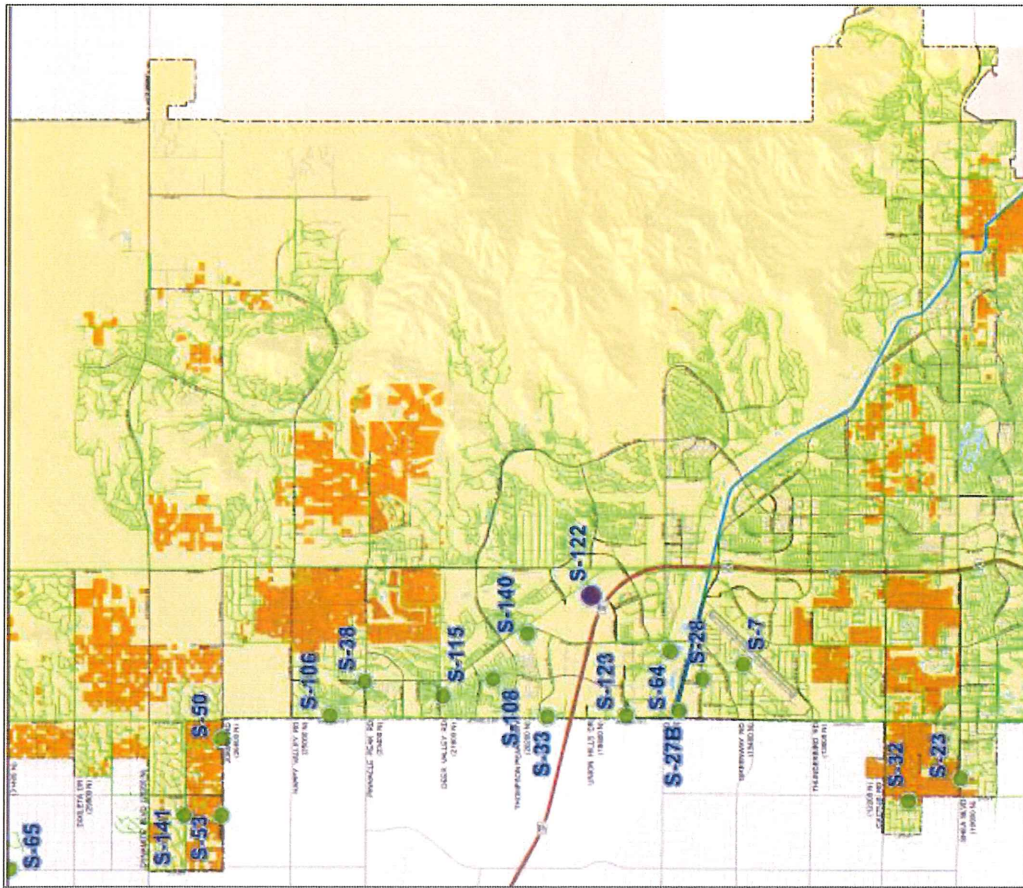
# How a septic tank system treats wastewater



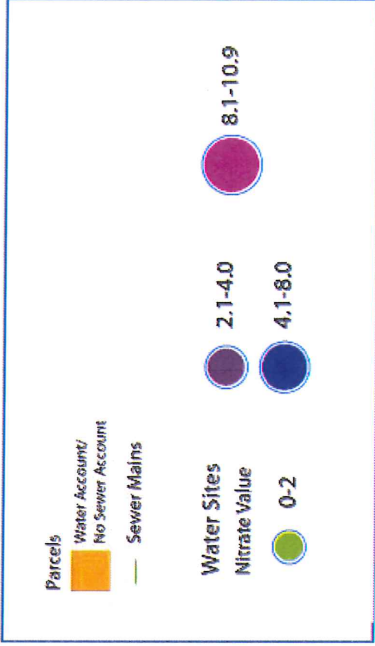
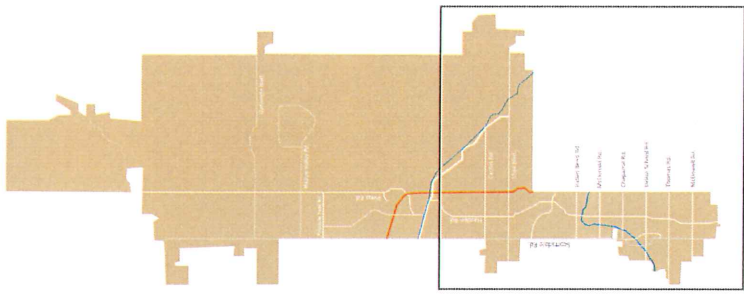
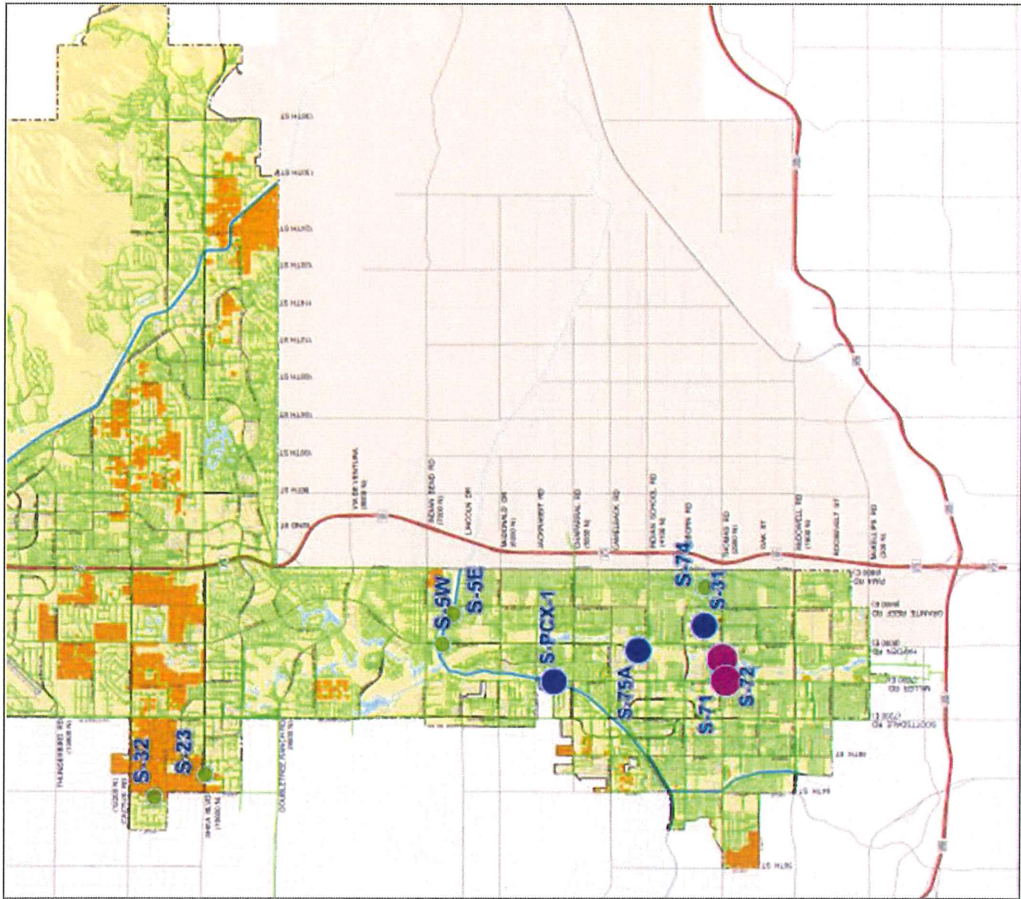
# Septic Systems in Scottsdale North



# Septic Systems in Scottsdale Central



# Septic Systems in Scottsdale Central



# Water Quality Impacts

- USEPA – “Insufficiently treated sewage from septic systems can cause groundwater contamination, which can spread disease in humans and animals. Improperly treated sewage poses the risk of contaminating nearby surface waters threatening swimmers with various infectious diseases, from eye and ear infections to acute gastrointestinal illness and hepatitis.”
- Groundwater Foundation – “An improperly designed, located, constructed, or maintained septic system can leak bacteria, viruses, household chemicals, and other contaminants into the groundwater causing serious problems.”
- CDC - “Septic systems are an under-recognized cause of disease outbreaks,” said Jonathan Yoder, who leads the domestic water, sanitation, and hygiene epidemiology team at the Centers for Disease Control and Prevention.

# Septic Tank Contamination Risk

## Most common (Regulated)

- Bacteria
- Viruses
- Parasites
- Nitrate (known to be as high as 50 ppm is septic tank discharge)

What do all of these have in common? **All acute contaminants**

## Pass through septic (Unregulated)

- Pharmaceuticals
- Personal Care Products

## EPA Septic System Density

- USEPA – “Many public health authorities feel that conventional septic systems are suitable only where population is strictly limited, and soil conditions are suitable for effective absorption. Otherwise these systems may contaminate ground and surface waters and result in sanitary nuisances and health hazards”.
- The EPA has determined that regions with greater than 40 septic systems per square mile (that is 1 system per 16 acres) are regions of potential groundwater contamination.

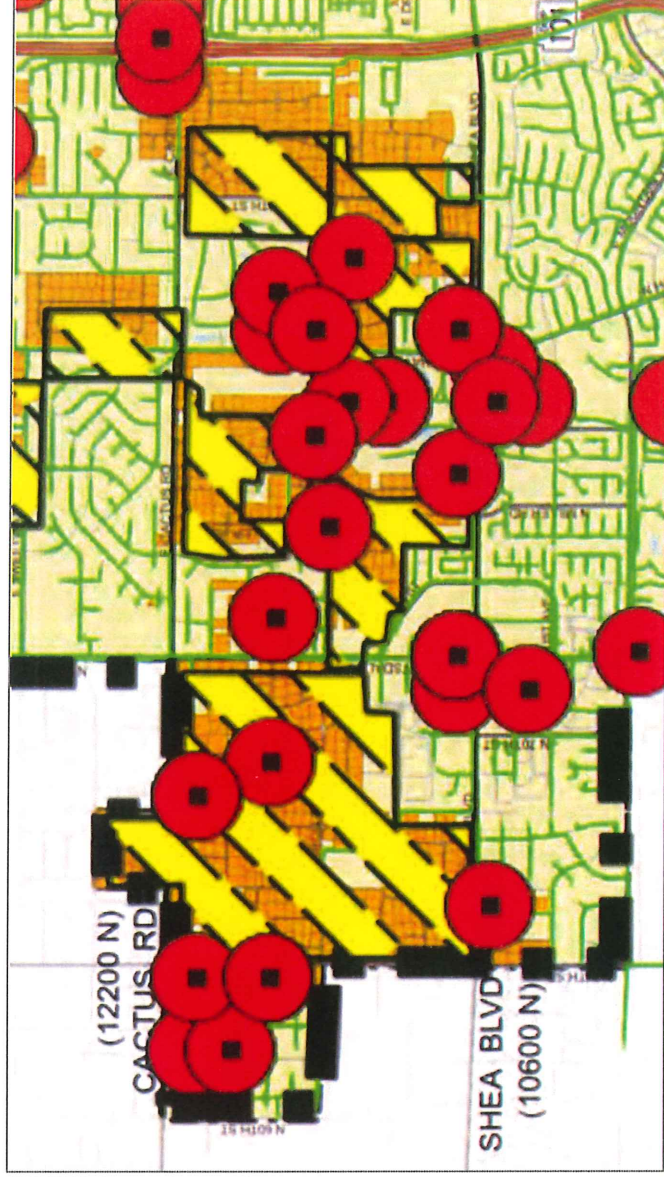




# Exempt Wells

Non-municipal “wells” exist within Scottsdale city limits

- May not be a fully completed well – may just be partially drilled
- Conduits from surface to groundwater
- Allowed to be within 100 feet of septic system
- Potential contamination can be directly drawn down from surface to aquifer



# Program Requirements

**Outlined in Code in Chapter 49, Articles VI and V of the Scottsdale City Code. Key sections are:**

- **Sec. 49-117 - Connection to public sewer from private onsite wastewater treatment system.**
- **Sec. 49-215 - Line payback agreements**
- **Sec. 49-227 – Extension Participation Program**

# Program Requirements

## **Sec. 49-117. - Connection to public sewer from private onsite wastewater treatment system.**

If a public sewer is available to the property\*, the building sewer of all structures located on the property shall be connected to the public sewer in accordance with the provisions of this article and the City's plumbing code and shall include all required extensions of the public sewer system as described in article V if any one (1) of the following occurs:

- (1) Construction of a new building; or
- (2) Building modifications or additions of fifty (50) percent or more by square footage; or
- (3) The county denies a septic permit.

## Program Requirements

### **Sec. 49-117. - Connection to public sewer from private onsite wastewater treatment system (cont.)**

If the existing onsite wastewater treatment system fails or requires modification, and a public sewer exists along any frontage of the property, the building sewer of all structures located on the property shall be connected to the public sewer in accordance with the provisions of this article and the City's plumbing code and shall include all required extensions of the public sewer system.

After connection to the public sewer system, any private onsite wastewater treatment system located on the property shall be abandoned according to county requirements.

# Program Requirements

## **Line payback agreements (Sec. 49-215)**

*Line payback agreement* means an agreement between an Owner or Developer and the City whereby the owner or developer will receive reimbursement of expenses at a future time for its construction of an extension of a water or sewer service line across the frontage of one or more benefiting parcels of land and such benefiting parcels will receive a value from the construction as a result of connecting to City water or sewer service.

# Program Requirements

## **Extension Participation Program (Sec. 49-227)**

*Extension participation program* means a program that allows an owner or developer, who has established a line payback agreement for the extension of a water or sewer service to assign its right to future reimbursement, from benefiting parcels, to the City in exchange for immediate reimbursement by the City when funds are available.

# Cost of Septic Systems

- **New System:**
  - \$13,000 to \$21,000 for new systems depending on size of homes
- **Major system modification**
  - Leech field, piping, tanks
  - Highly dependent upon homeowner maintenance
  - County permit and city sewer availability



# Cost of Sewer Line Extension

Fiscal Year	Number of Affected		Number of Exempt Lots	Total Length of Extension (Feet)	Average Cost per Lot
	Lots <sup>2</sup>				
14-15	4		2	1160	\$ 28,773
15-16	18		5	1760	\$ 12,199
16-17	12		2	1977	\$ 25,646
17-18	40		24	5795	\$ 27,881
18-19	27		9	3335	\$ 29,051
<b>Average/Total</b>	<b>101</b>		<b>42</b>	<b>14027</b>	<b>\$ 24,710</b>

# Possible Options for Council Consideration

1. Make no changes
2. Set a maximum amount per parcel to be applied by the City
3. Other

# Questions?

