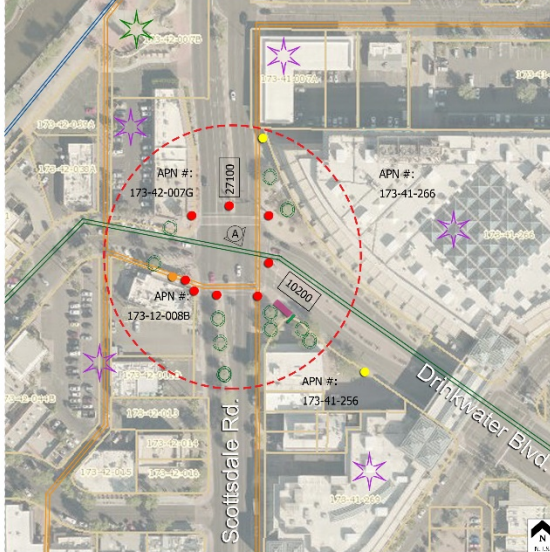


SITE ASSESSMENT MAP

SAMPLE SITE MAP

SITE 25: SCOTTSDALE RD. AT DRINKWATER BLVD.

LEGEND-EXISTING SITE CONDITIONS



- PROPOSED BIKE STATION (SEE EXISTING SITE PHOTO)
- BIKE STATION STUDY AREA LIMITS: R-180' (FOOT)
- RIGHT-OF-WAY: APN PARCEL LIMITS
- SIGHT VISIBILITY TRIANGLE (SVT): 33' X 33'
- EXISTING SHADE (ORGANIC OR STRUCTURED, DOES NOT INCLUDE TRANSIT STOPS)
- COMFORT OPPORTUNITY (EXISTING SEATING)
- DESTINATION: PER COLOR
- COMMERCIAL
- RECREATIONAL
- RESIDENTIAL
- STREET LIGHT
- PEDESTRIAN LIGHT POLE
- TRAFFIC LIGHT
- XXX TRAFFIC VOLUME
- BUS STOP: (NOT WITHIN STUDY AREA)

TYPES OF AMENITIES (SEE OH 4.0-4.1)

- BIKE RACK
- SHADE
- DEFINED STATION BOUNDARIES
- SEATING
- DECORATIVE PAVEMENT
- MAP / INFORMATION PANEL
- KIOSK / USER INTERFACE STATION
- TRASH / RECYCLE RECEPTACLES
- LIGHTING
- DRINKING FOUNTAIN
- REPAIR / AIR PUMP
- WAYFINDING MAP / NEARBY DESTINATIONS IDENTIFIED



SEE (A) PERSPECTIVE: EXISTING SITE PHOTO - LOOKING SOUTHEAST