

BEFORE



AFTER



JANUARY
2020
PUBLICATION



BEFORE AND AFTER DEVELOPMENT: IN PICTURES JANUARY 2020

CITY COUNCIL

*Mayor W.J. "Jim" Lane
Suzanne Klapp
Virginia Korte
Kathleen Littlefield
Linda Milhaven
Guy Phillips
Solange Whitehead*

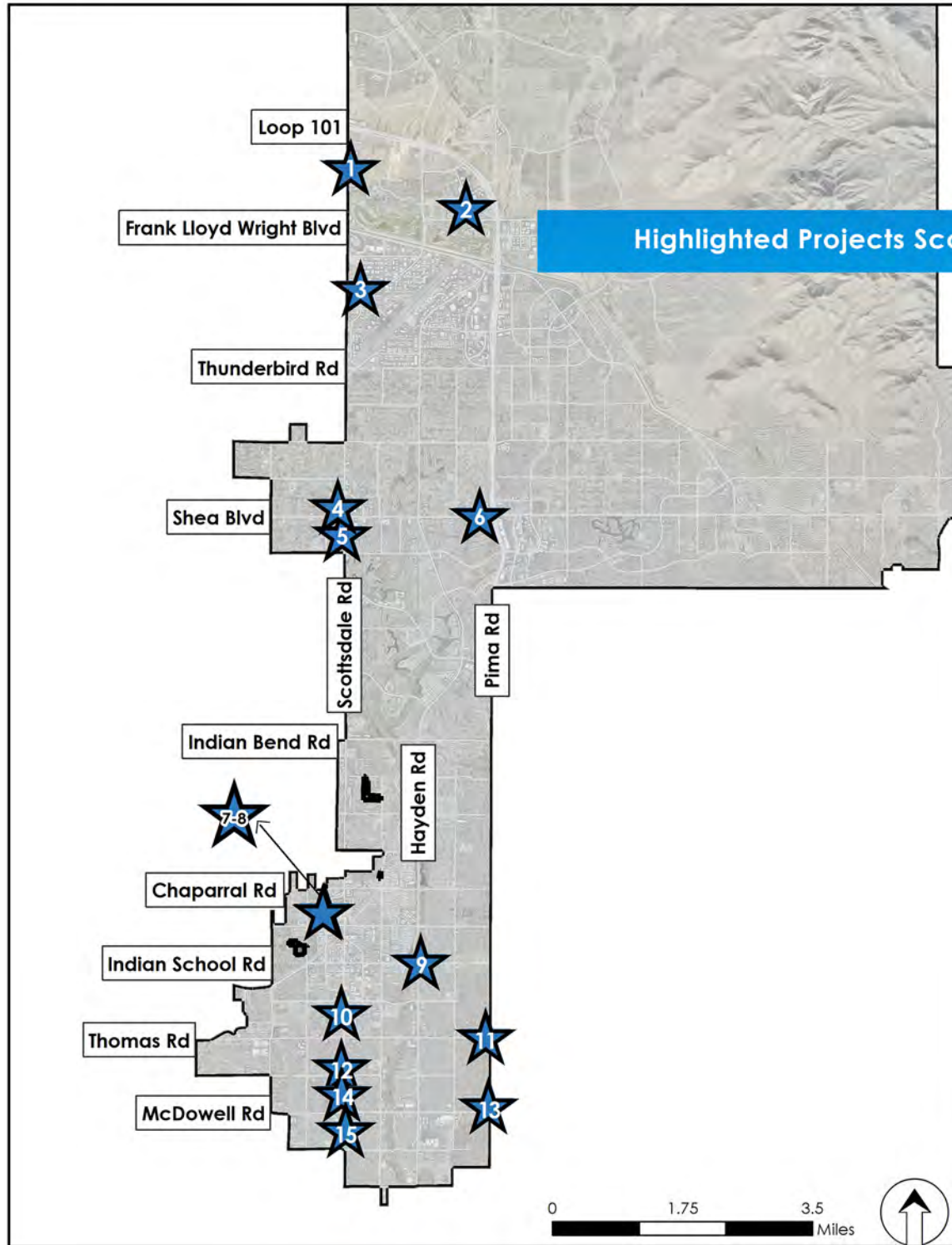
CITY MANAGER

Jim Thompson

PROJECT STAFF

*Randy Grant, Planning and Economic Development Executive Director
Tim Curtis, AICP, Current Planning Director
Erin Perreault, AICP, Long-Range Planning Director
Steve Venker, Planning and Design Services Manager
Jeff Ruenger, Planning Administration Manager
Kristi Perikly, GISP, Graphics Designer
Mercedes McPherson, Graphics Designer
Chris Zimmer, Planning Specialist
Craig Noll, Video Production Specialist
Becca Cox, Video Production Assistant*

The following are examples of recently completed projects that represent revitalization and economic growth in Scottsdale. This report is one of a series that is produced periodically to highlight projects throughout the community where significant reinvestment is occurring. These projects resulted from a specific combination of private investment and adhere to Scottsdale's quality design guidelines and expectations.



before



after



Chauncey Venue (South Portion)

Three new multi-use buildings including a four-story 300 dwelling unit apartment complex, on a 12 acre site, located at the southeast corner of Chauncey Lane and Scottsdale Road.

before



after



17 Three Hundred

A new two-story, 48,500 square foot office building, on a 2.4 acre site, located near the intersection of Bell Road and Perimeter Drive.

before



after



District at Scottsdale

A new four-story mixed-use development with 330 apartments and 22,000 square feet of mixed-use tenant space, located at the northeast corner of Greenway-Hayden Loop and Dial Boulevard.

before



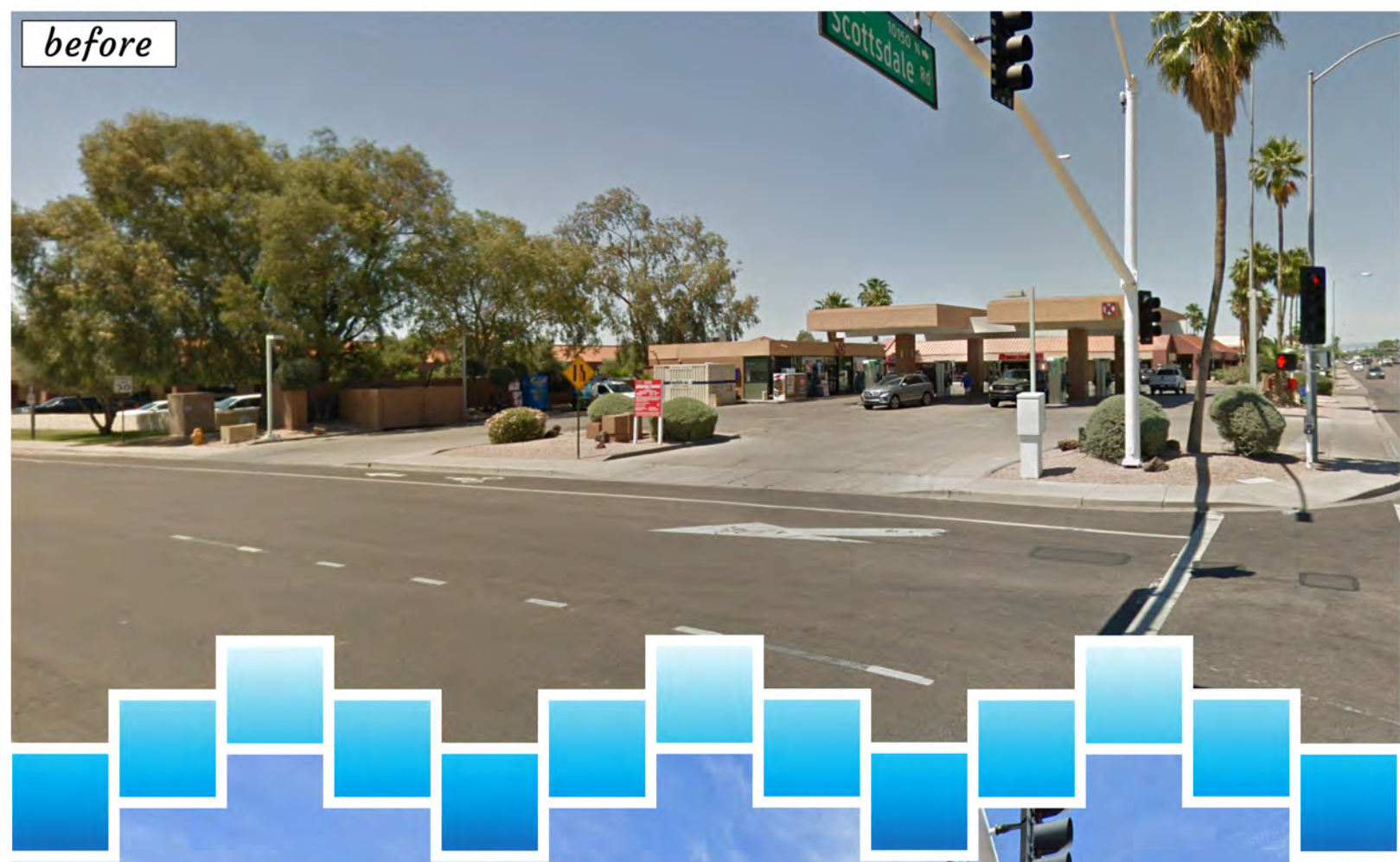
after



Jaylynn Properties Addition

A new two-story, 8,426 square foot office building, on a 1.75 acre site, located at the southeast corner of Sahuaro Drive and 71st Place.

before



after



Circle K (Gold Dust)

A new 4,600 square foot convenience store and fueling station on a .95 acre site, located at the northwest corner of Gold Dust Avenue and Scottsdale Road.

before



after



Pima Crossing

A new 6,700 square foot multi-tenant commercial building with 1,000 square feet of outdoor dining area, located in the Pima Crossing shopping center at the northwest corner of Shea Boulevard and the Loop 101 Freeway.

before



after



Ocean 44

**A new 11,000 square foot restaurant and landscaping improvements,
at the intersection of Goldwater Road and Fashion Square Drive.**

before



after



Toca Modera

A new 8,000 square foot restaurant and landscaping improvements near the intersection of Goldwater Road and Fashion Square Drive.

before



after



Circle K (Hayden)

A new 4,600 square foot convenience store and landscape improvements on a 1.2 acre site, located at the northeast corner of Hayden and Indian School Roads.

before



after



Alta Osborn

A new five-story, multi-family residential development with 277 dwelling units, on a 4.84 acre site, located near the intersection of Scottsdale Road and Drinkwater Boulevard.

before



after



Black Rock Coffee

A new 1,887 square foot coffee shop with drive through and 340 square foot patio, on a .6 acre site, located near the intersection of Pima and Thomas Roads.

before



after



O'Reilly Auto Parts

**A new 8,320 square foot commercial building on a .75 acre site,
located near the intersection of Oak Street and Scottsdale Road.**

before



after



Extra Space Storage

A new two-story, 126,000 square foot community storage building, on a 2.7 acre site, located near the intersection of Pima and McDowell Roads.

before



after



Dutch Bros. Coffee

A new 800 square foot coffee shop with drive through and 877 square foot patio, on a 2.23 acre site, located at the northwest corner of Palm Lane and Scottsdale Road.

before



after



SkySong Hotel Element

A new five-story, 100,300 square foot hotel with 153 guest rooms, on a 1.4 acre site, located at the northeast corner of Enterprise Drive and Scottsdale Road.

PROJECT TEAM CONTACT INFORMATION

Jeff Ruenger
Planning Administration Manager
480.312.4208
JRuenger@Scottsdaleaz.gov

Mercedes McPherson
Graphic Designer
480.312.2867
MMcPherson@Scottsdaleaz.gov

Chris Zimmer
Planning Specialist
480.312.2347
CZimmer@scottsdaleaz.gov

