



Monthly Financial Update

As of December 31, 2010

City Council

January 25, 2011

Prepared by: Finance and Accounting Division



December 2010 General Fund Results

(in millions)

| | Revised Budget | Actual | Favorable/ (Unfavorable) | % Change |
|------------------------|-------------------|--------|-----------------------------|-------------|
| Sources | \$20.2 | \$19.2 | (\$1.0) | (5%) |
| Uses | 17.4 | 17.0 | 0.4 | 2% |
| Change in Fund Balance | \$2.8 | \$2.2 | (\$0.6) | |



FYTD General Fund Results

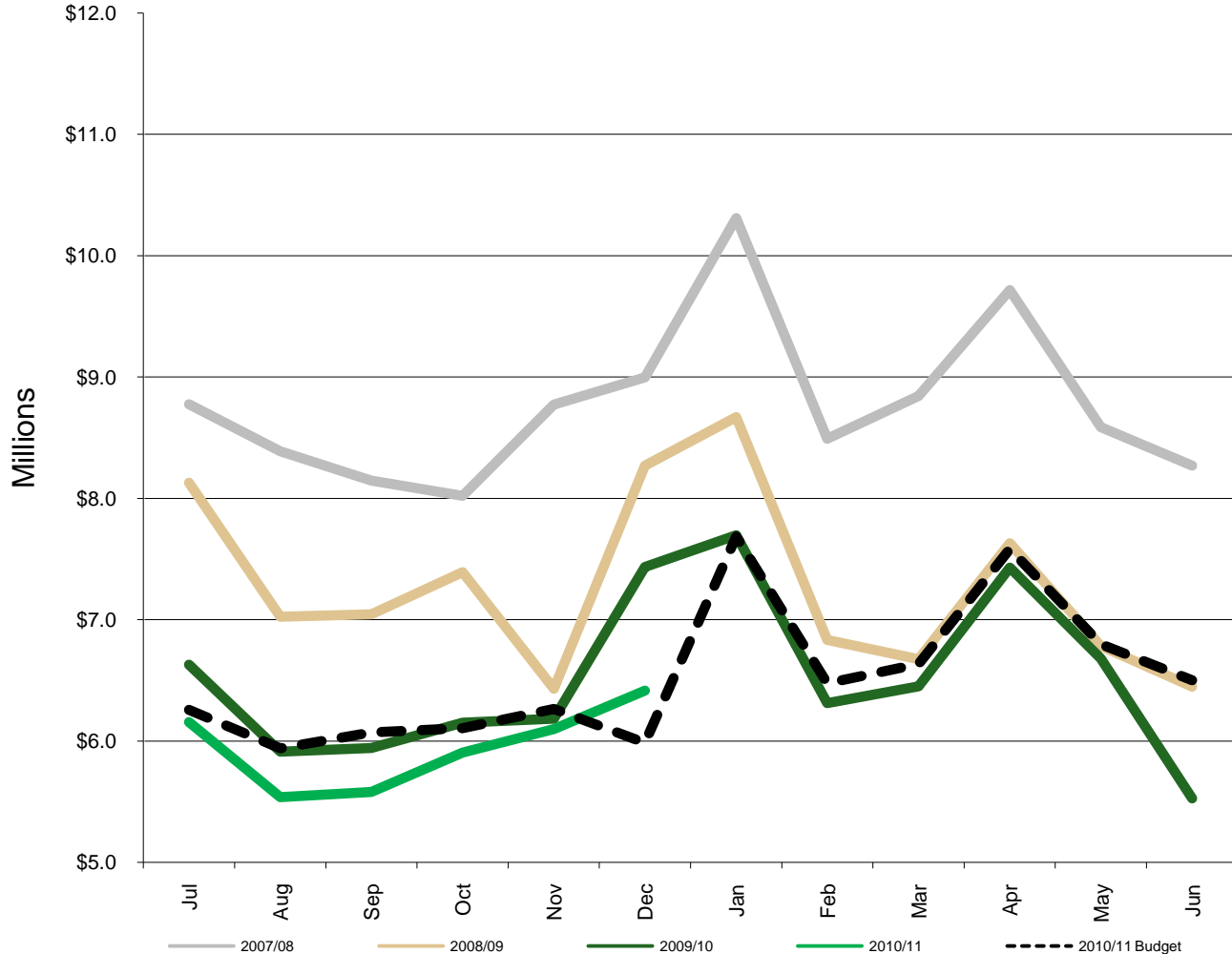
as of 12/31/10 (in millions)

| | Revised Budget | Actual | Favorable/ (Unfavorable) | % Change |
|------------------------|-------------------|---------|-----------------------------|-------------|
| Sources | \$116.6 | \$115.5 | (\$1.1) | (1%) |
| Uses | 113.2 | 108.6 | 4.6 | 4% |
| Change in Fund Balance | \$3.4 | \$6.9 | \$3.5 | |



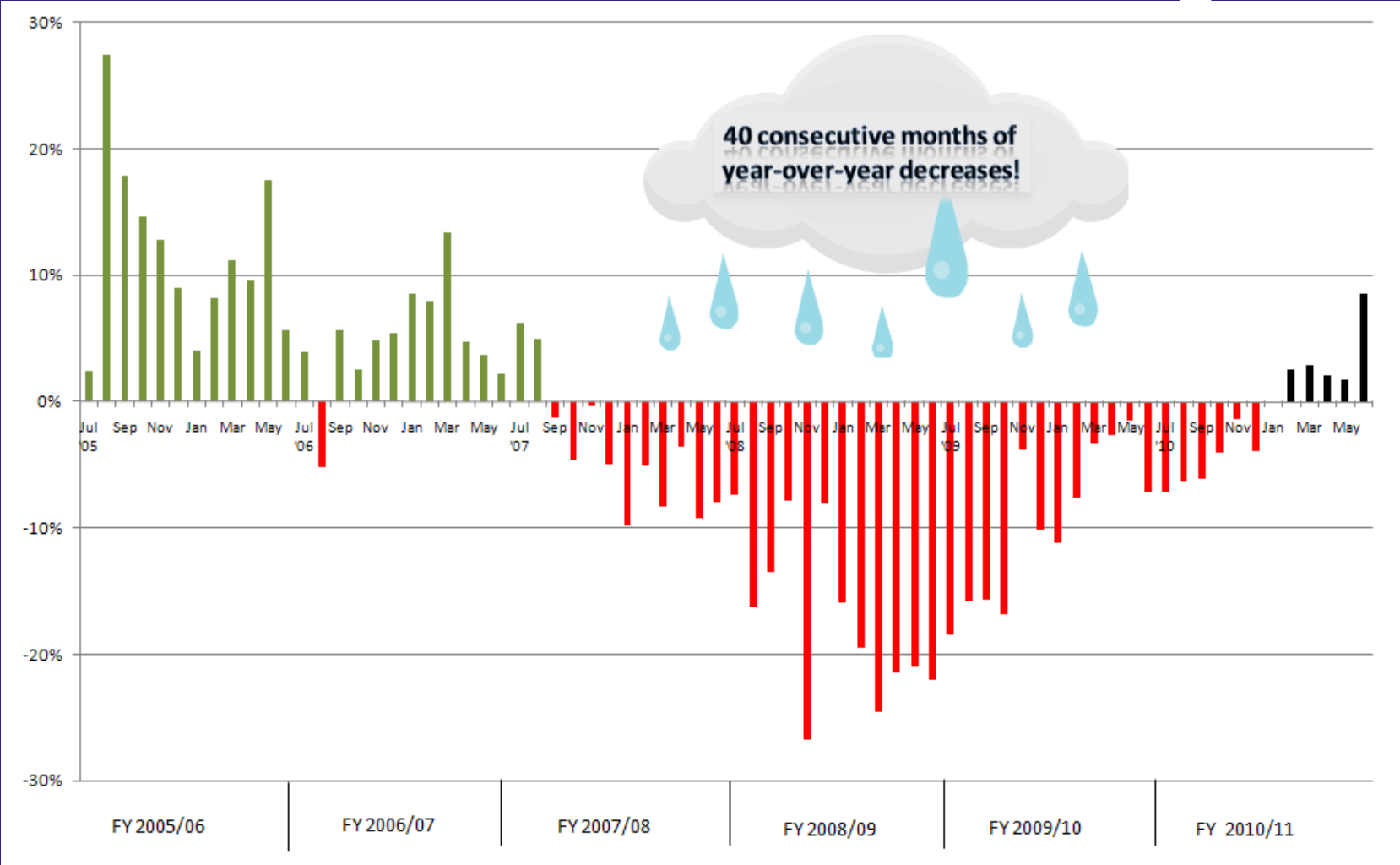
City of Scottsdale 1% Sales Tax

Category: Total





City of Scottsdale 1% Sales Tax Year-Over-Year Change





FYTD General Fund Operating Sources as of 12/31/10 (in millions)

| | Revised Budget | Actual | Change | % Change |
|------------------------------|-------------------|----------------|----------------|-------------|
| 1.1% Sales Taxes | \$40.1 | \$39.9 | (\$0.2) | 0% |
| State-Shared Revenues | 24.3 | 23.8 | (0.5) | -2% |
| Charges for Services/Other | 21.4 | 22.1 | 0.7 | 3% |
| Property Taxes | 13.0 | 12.2 | (0.8) | -6% |
| Franchise Fees/In-Lieu Taxes | 5.4 | 5.2 | (0.2) | -4% |
| Bed Taxes | 4.6 | 4.5 | (0.1) | -2% |
| Transfer In | 7.8 | 7.8 | 0.0 | 0% |
| Total | \$116.6 | \$115.5 | (\$1.1) | 1% |



FYTD General Fund Operating Uses as of 12/31/10 (in millions)

| | Revised Budget | Actual | Change | % Change |
|-------------------------------------|-------------------|----------------|--------------|-------------|
| *Personnel Services | \$78.9 | \$76.7 | \$2.2 | 3% |
| Contractual | 24.7 | 24.5 | 0.2 | 1% |
| Commodities | 3.4 | 3.0 | 0.4 | 12% |
| Capital Outlay | 1.6 | 0.1 | 1.5 | 94% |
| Debt Service & Contracts Payable | 2.5 | 2.0 | 0.5 | 20% |
| Transfers Out | 2.1 | 2.3 | (0.2) | (10%) |
| Total | \$113.2 | \$108.6 | \$4.6 | 4% |

* Includes vacancy savings, leave accrual payouts and position reclassifications.



FYTD Personnel Services as of 12/31/10

(in millions)

| | 2009/10 Actual | 2010/11 Actual | 2010/11 Revised Budget | Change | % Change |
|---------------------|-------------------|-------------------|------------------------------|--------------|-------------|
| *Salaries and Wages | \$62.0 | \$58.4 | \$59.5 | \$1.1 | 2% |
| Overtime | 2.9 | 2.6 | 3.0 | 0.4 | 13% |
| Retirement | 6.7 | 6.6 | 6.9 | 0.3 | 4% |
| Health/Dental | 7.6 | 4.9 | 4.9 | - | -% |
| FICA | 4.2 | 4.0 | 4.3 | 0.3 | 7% |
| Misc. Fringes | 0.2 | 0.2 | 0.3 | 0.1 | 33% |
| Total | \$83.6 | \$76.7 | \$78.9 | \$2.2 | 3% |

* Includes vacancy savings, leave accrual payouts and position reclassifications.