

Fire Station 612 & Well Site 160 Public Meeting

November 28, 2022





Meeting Overview & Introductions

- Well Site 160
- Fire Station 612
- Municipal Use Master Site Plan

Project Location



N HAYDEN RD.

MAYO BLVD

ARIZONA STATE ROUTE 101

82ND ST

PROJECT SITE

ABANDONED ROADWAY (E. UNION HILLS DR.)



Well Site 160

Aquifer Storage and Recovery (ASR) Wells: General Operation

- ASR wells, like production wells, are capable of pumping water from an underground aquifer meeting your potable water needs.
- ASR wells are unique because they are also capable of recharging/injecting water into the aquifer storing it for future use.
- The following are the benefits of ASR wells:



Recharge:

- Earn Long-term Storage Credits Meeting Future Pumping Demands
- Store Excess Surface Water for Future Uses

Recovery:

- Augment the City's potable water supply in drought or emergency conditions
- Provide alternate water source for irrigation or other needs.

Aquifer Storage and Recovery (ASR) Wells: General Operation

ASR wells have additional benefits to ensure a long-term and sustainable water source:

- Recharging water can build-up underground aquifers and stabilize groundwater levels.
- Recharging potable water could defer future water treatment needs by reducing groundwater contaminants.
- Periodically recovering water out of the well backwashes the well, thereby extending the life of the well. The recovered water is not 'lost', but routed to a treatment facility and reused by the City.

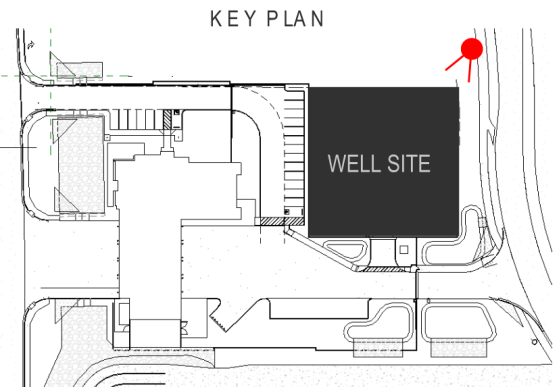


Aquifer Storage and Recovery (ASR) Wells: Project Summary

- Scottsdale is constructing four (4) ASR Wells in strategic locations to maximize surface water supplies and minimize groundwater use.
- ASR Wells provides a sustainable long-term water source by injecting potable water into the aquifer during periods of low demand and withdrawing during periods of high demand.
- Each ASR Well is constructed in two phases, thereby, maximizing each Site's potential:
 - Phase 1: Drilling ASR Well into the Aquifer
 - Phase 2: Equip ASR Well with Pump and Electrical Equipment
- The project schedule includes the following activities:

Well Site	Phase 1 - Drilling	Phase 2 - Equipping
Well 54C	Complete	February 2022 – December 2023
Well 159	Complete	Summer 2023 – Early 2025
Well 160	Fall 2022 – Spring 2023	Early 2023 – Late 2025
Well 161	March 2022 – September 2022	Mid 2023 – Late 2024

Aquifer Storage and Recovery (ASR) Wells: Well Site 160 Rendering





Fire Station 612 Operation

Scottsdale Fire Department: Mission, Objective & Services

- ‘WE CARE FOR YOU’
- Return the Situation to a State of Normalcy
- You Call, We Come
- All Hazards Approach
 - Fire Suppression
 - Emergency Medical Services
 - Special Operations: Hazardous Materials, Technical Rescue, Airport Rescue
 - Urban Interface
 - Prevention
 - Community Education
 - “Yeah, we do that!”

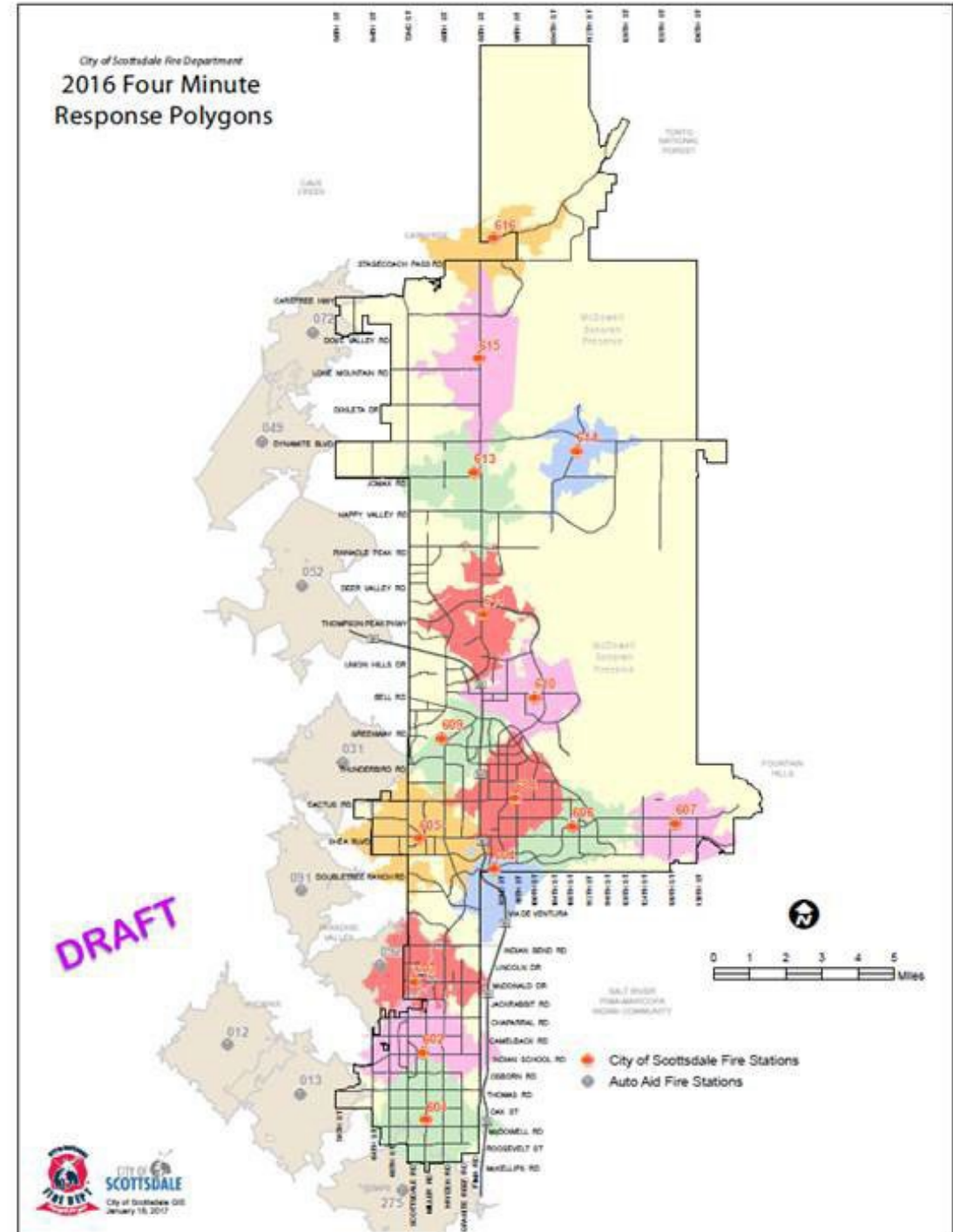


Scottsdale Fire Department: 2022 by the Numbers

- All-Hazards Community Responders
- 24/7/365 Service Provision
- 39,900 Incidents – 2021
- 74 Employees always providing the 27/7/365 service provision
- 183 square mile service area
- 15 Fire Stations
- 12 Fire Engines
- 4 Ladder Companies
- 1 Deputy Chief/Shift Commander
- 2 Battalion Chiefs
- 1 ARFF- 4 Brush Trucks-TRT-Haz-Mat
- Executive, Administrative & Support Staff



Scottsdale Fire Department: Your Department



Scottsdale Fire Department: Fire Station 612 By the Numbers

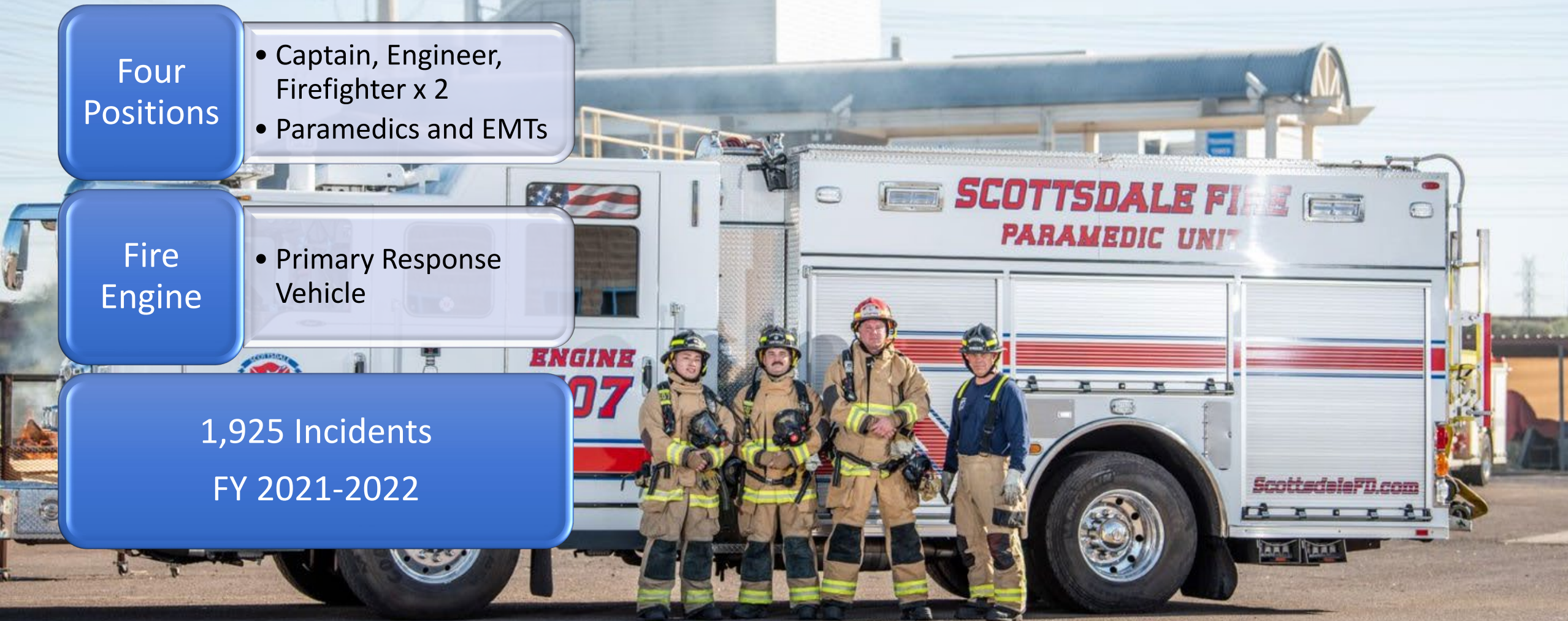
Four
Positions

- Captain, Engineer,
Firefighter x 2
- Paramedics and EMTs

Fire
Engine

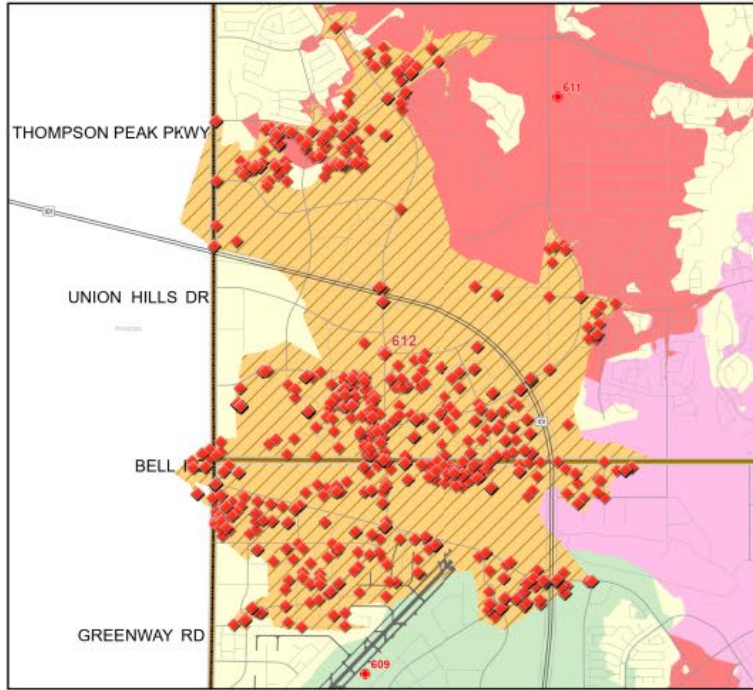
- Primary Response
Vehicle

1,925 Incidents
FY 2021-2022



FY 18-19

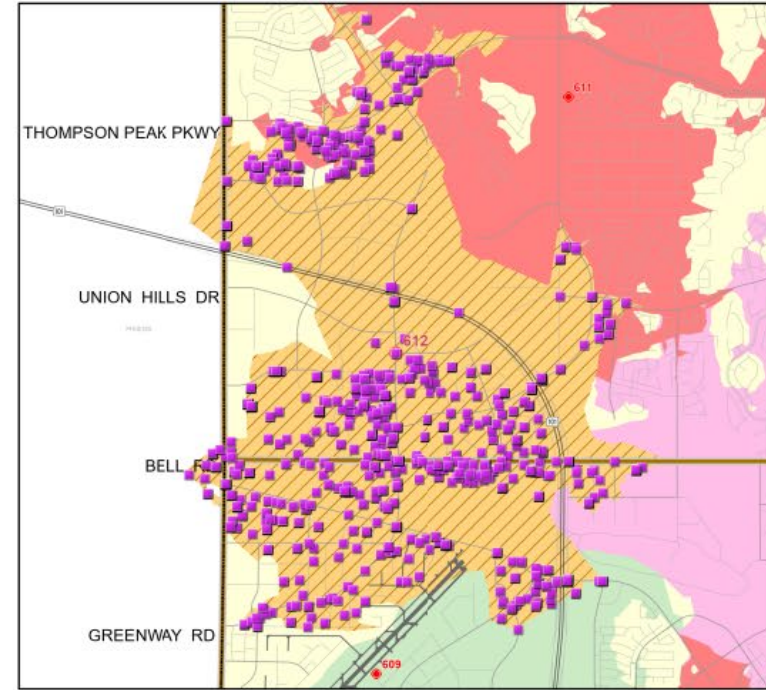
FS 612
Incidents
(1,841)



FY 19-20

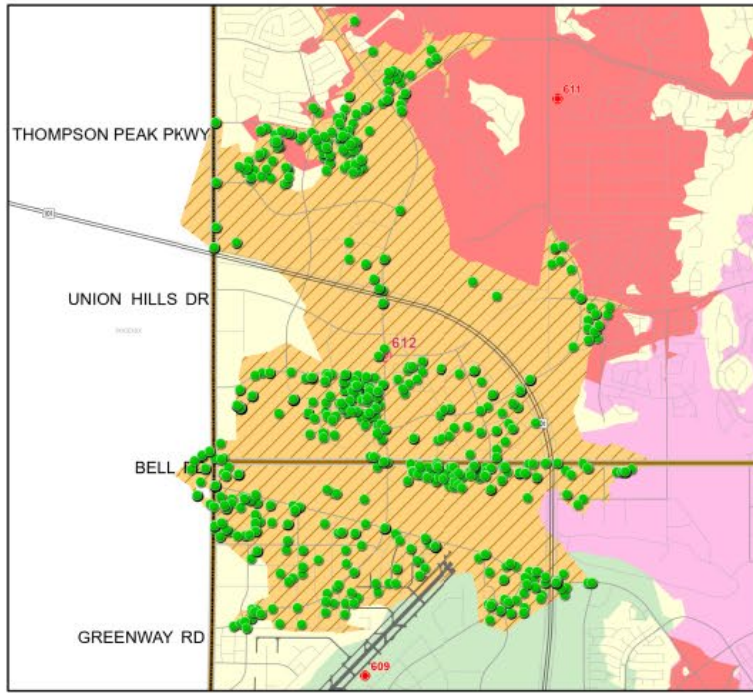
DRAFT

FS 612
Incidents
(1,838)



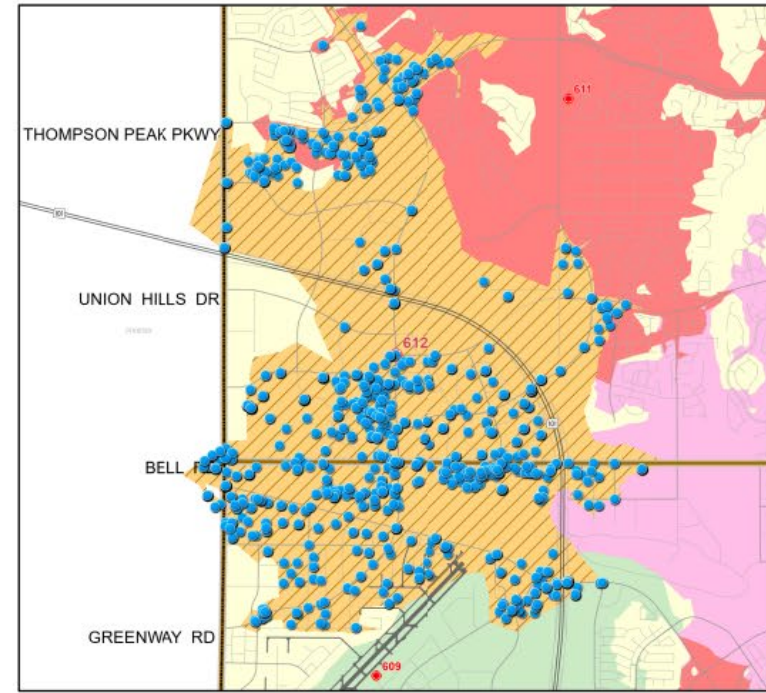
FY 20-21

FS612
Incidents
(1,496)



FY 21-22

FS612
Incidents
(1,925)



Scottsdale Fire Department: Being a Good Neighbor

Beacon of Public Safety

Integrate into the Community Fabric

Transparent and Collaborative

Fire Department Work Schedule

Typical Workday

Responding to Emergencies



Fire Station 612

Design

Fire Station 612: Location



NORTH – FACING NORTH



NORTH – FACING EAST

Fire Station 612: Location



NORTH – FACING SOUTH
(TOWARDS SITE CENTER)



NORTH – FACING WEST

Fire Station 612: Location



EAST – FACING NORTH



EAST – FACING EAST

Fire Station 612: Location



EAST – FACING SOUTH



EAST – FACING WEST
(TOWARDS SITE CENTER)

Fire Station 612: Location



SOUTH – FACING NORTH
(TOWARDS SITE CENTER)



SOUTH – FACING EAST

Fire Station 612: Location



SOUTH – FACING SOUTH



SOUTH – FACING WEST

Fire Station 612: Location



SOUTH – FACING NORTH



WEST – FACING EAST
(TOWARDS SITE CENTER)

Fire Station 612: Location



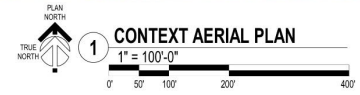
WEST – FACING SOUTH



WEST – FACING WEST



1/12/2022 10:01:50 AM C:\Rev\0201\0201_Aerial_Site_2021_Landscape\0201.rvt



PRELIMINARY NOT FOR CONSTRUCTION

AW
 Arrington Watkins Architects
 5240 North 16th Street, Suite 101
 Phoenix, Arizona 85016
 Telephone: (602) 279-4372
 Fax: (602) 279-9110
 A Limited Liability Company
 © Copyright 2022

CITY OF SCOTTSDALE
 FIRE STATION 612
 18455 N. HAYDEN RD. SCOTTSDALE, AZ 85255

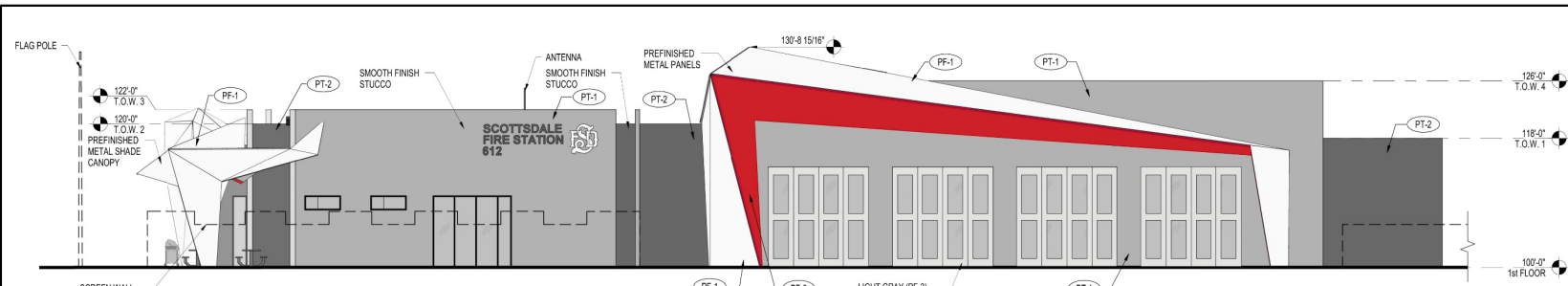
NO.	REVISION	DATE

PROJECT NO.: 2021.028
 DATE: 12-19-2022
 DESIGNED BY: AW
 DRAWN BY: LS
 APPROVED BY: MG
 SHEET TITLE: CONTEXT AERIAL PLAN

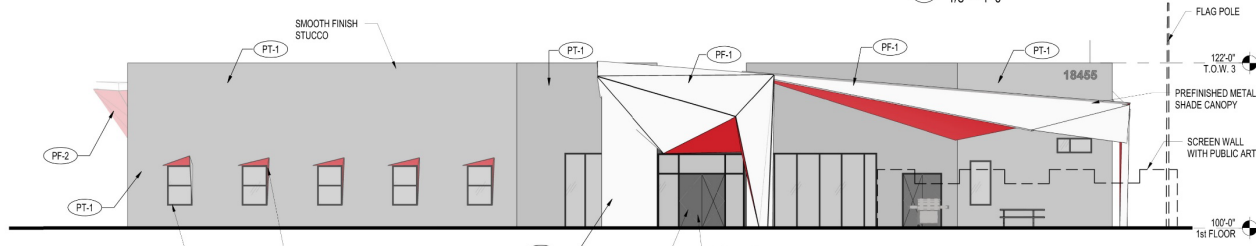
SHEET NUMBER:
A-1.5



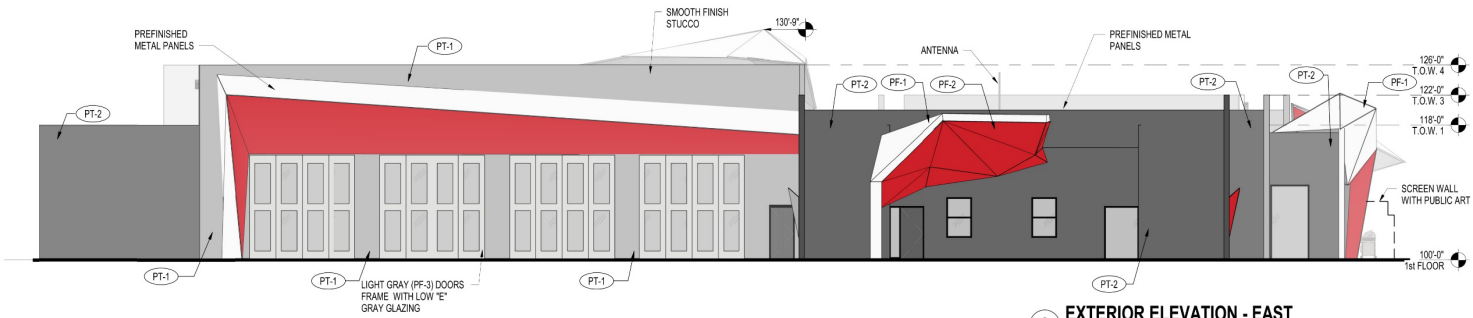
SCOTTSDALE FIRE STATION 612



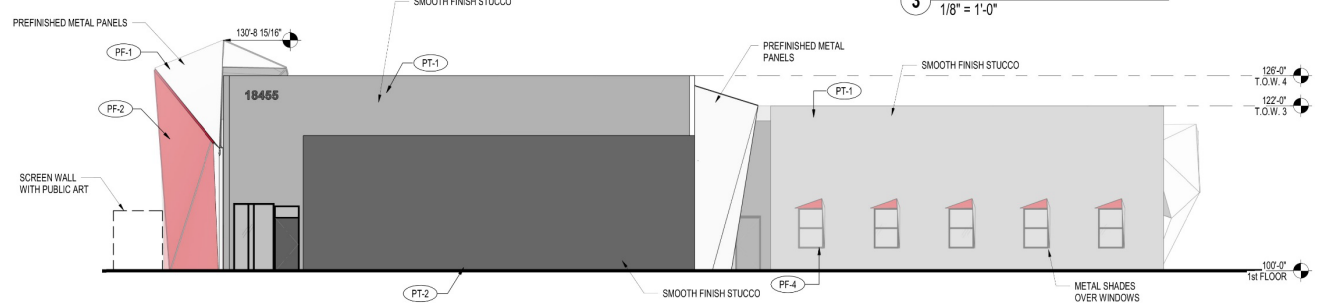
1 EXTERIOR ELEVATION - WEST
1/8" = 1'-0"



2 EXTERIOR ELEVATION - NORTH
1/8" = 1'-0"



3 EXTERIOR ELEVATION - EAST
1/8" = 1'-0"



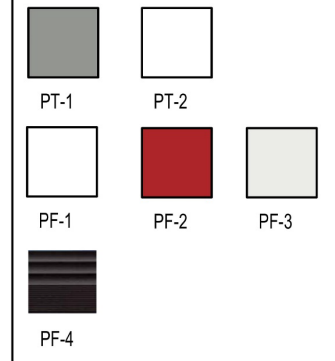
4 EXTERIOR ELEVATION - SOUTH
1/8" = 1'-0"

GENERAL NOTES (ELEVATIONS):

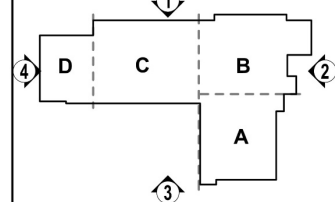
FINISH SCHEDULE - EXTERIOR

CODE	DESCRIPTION	MANUFACTURER	PRODUCT INFO
PF-1	EXTERIOR PREFINISHED METAL PANEL	ALUCOBOND	MAGNOLIA - WHITE
PF-2	EXTERIOR PREFINISHED METAL PANEL - COLOR RED	ALUCOBOND	RED FIRE - RED
PF-3	EXTERIOR PREFINISHED METAL PANEL - COLOR WHITE	DOOR ENGINEERING	RAL 9003 - SIGNAL WHITE
PF-4	EXTERIOR PREFINISHED ALUMINUM DOOR/WINDOW FRAMES	ARCADIA	DARK BRONZE
PT-1	EXTERIOR PAINTED EIFS	SHERWIN-WILLIAMS	SW 9163 TIN LIZZIE
PT-2	EXTERIOR PAINTED EIFS	SHERWIN-WILLIAMS	SW 7674 PEPPERCORN

FINISH SCHEDULE - MATERIAL KEY:



KEY PLAN



PRELIMINARY NOT FOR CONSTRUCTION



**CITY OF SCOTTSDALE
FIRE STATION 612
18455 N. HAYDEN RD. SCOTTSDALE, AZ 85255**

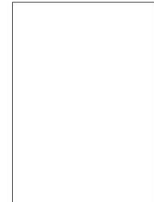
NO.	REVISION	DATE

PROJECT NO.: 2021.028
DATE: 12/19/2022
DESIGNED BY: MG
DRAWN BY: DG, LS
APPROVED BY: MG
SHEET TITLE: SCOTTSDALE F.S. #612 ARCHITECTURAL EXTERIOR ELEVATIONS
SHEET NUMBER: **A-4.1**

1/12/2022 10:29:42 AM C:\Revit\2021\028\Arlington\Scottsdale Fire Station 612_2021_18455\A-4.1.rvt



9/8/2022 2:20:55 PM C:\Users\0201\OneDrive\Arch_Site_2021_ggff\scottsdalefirestation612.dwg



AW
 Arrington Walkins Architects
 5240 North 16th Street, Suite 101
 Phoenix, Arizona 85016
 Telephone: (602) 279-4373
 Fax: (602) 279-9110
 A Limited Liability Company
 © Copyright 2022

FLOOR
 CONSULTANTS
 1102 N. 1st Street | 602.402.1025 | 1st
 Second Floor | 602.402.1427 | 1st
 Phoenix, AZ 85004

**CITY OF SCOTTSDALE
 FIRE STATION 612
 18455 N. HAYDEN RD.
 SCOTTSDALE, AZ 85255**

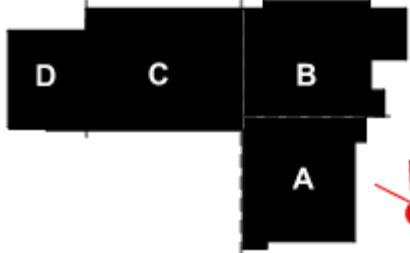
NO.	REVISION	DATE

PROJECT NO.: 20211028
 DATE: 11.18.2022
 DESIGNED BY: CS
 DRAWN BY: MS
 APPROVED BY: _____
 SHEET TITLE:
 ENLARGED
 LANDSCAPE PLAN

SHEET NUMBER:
LA-1

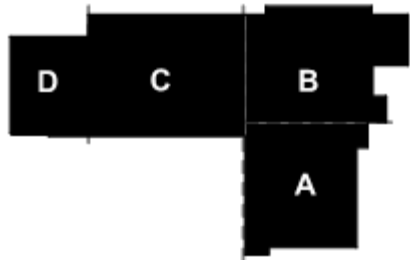


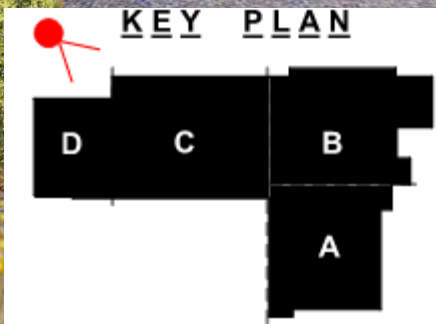
KEY PLAN





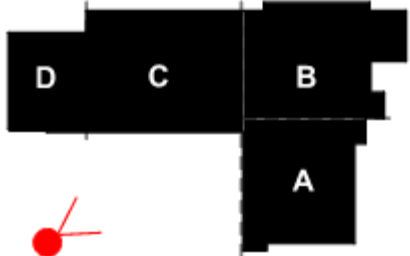
KEY PLAN







KEY PLAN



Project Schedule

