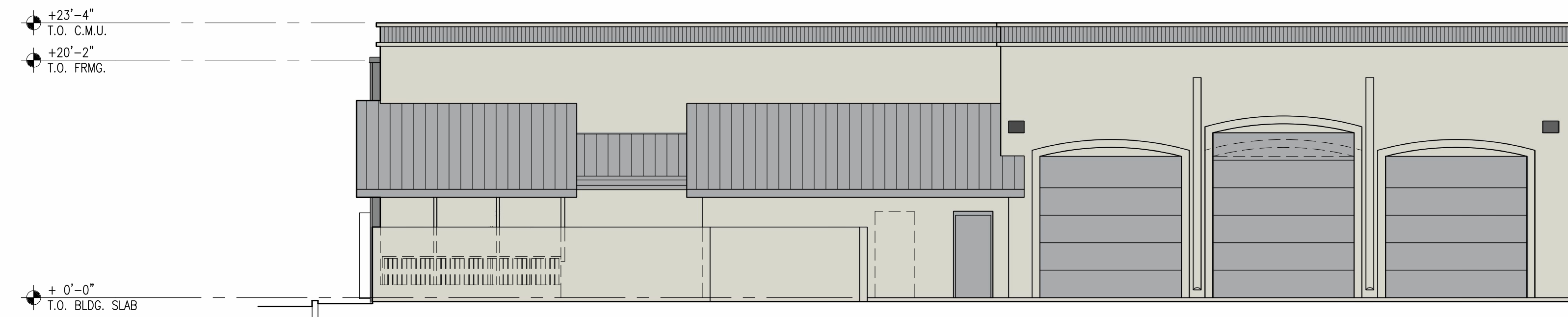




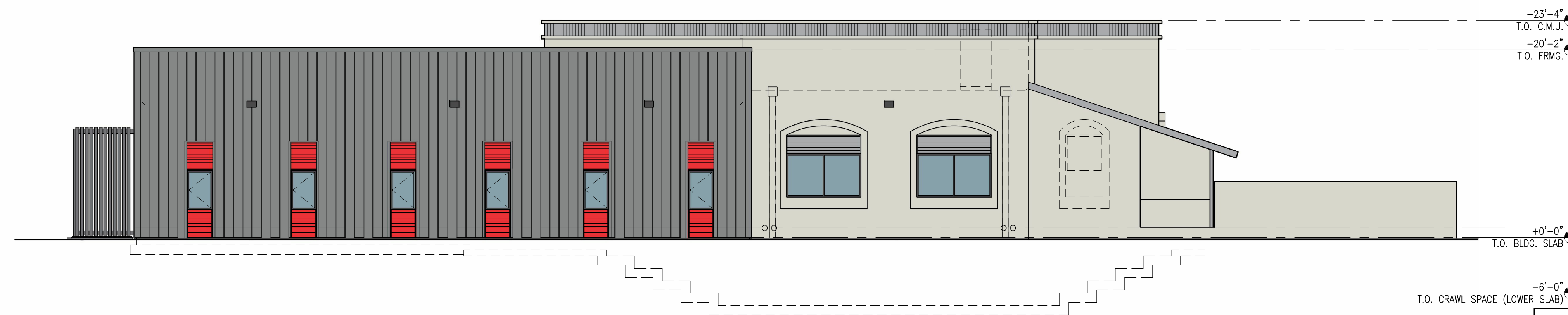
**BUILDING ELEVATION - WEST 4**

1/8" = 1'-0"



**BUILDING ELEVATION - NORTH 3**

1/8" = 1'-0"

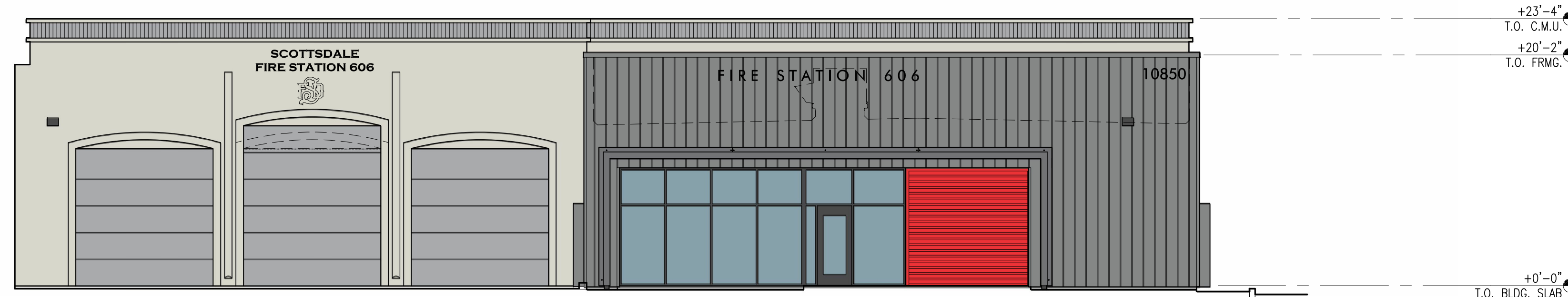


**BUILDING ELEVATION - EAST 2**

1/8" = 1'-0"



existing street view



**BUILDING ELEVATION - SOUTH 1**

1/8" = 1'-0"

\*color depictions of proposed elevations are approximate to the actual color and cannot be construed as exact due to plotting equipment calibration